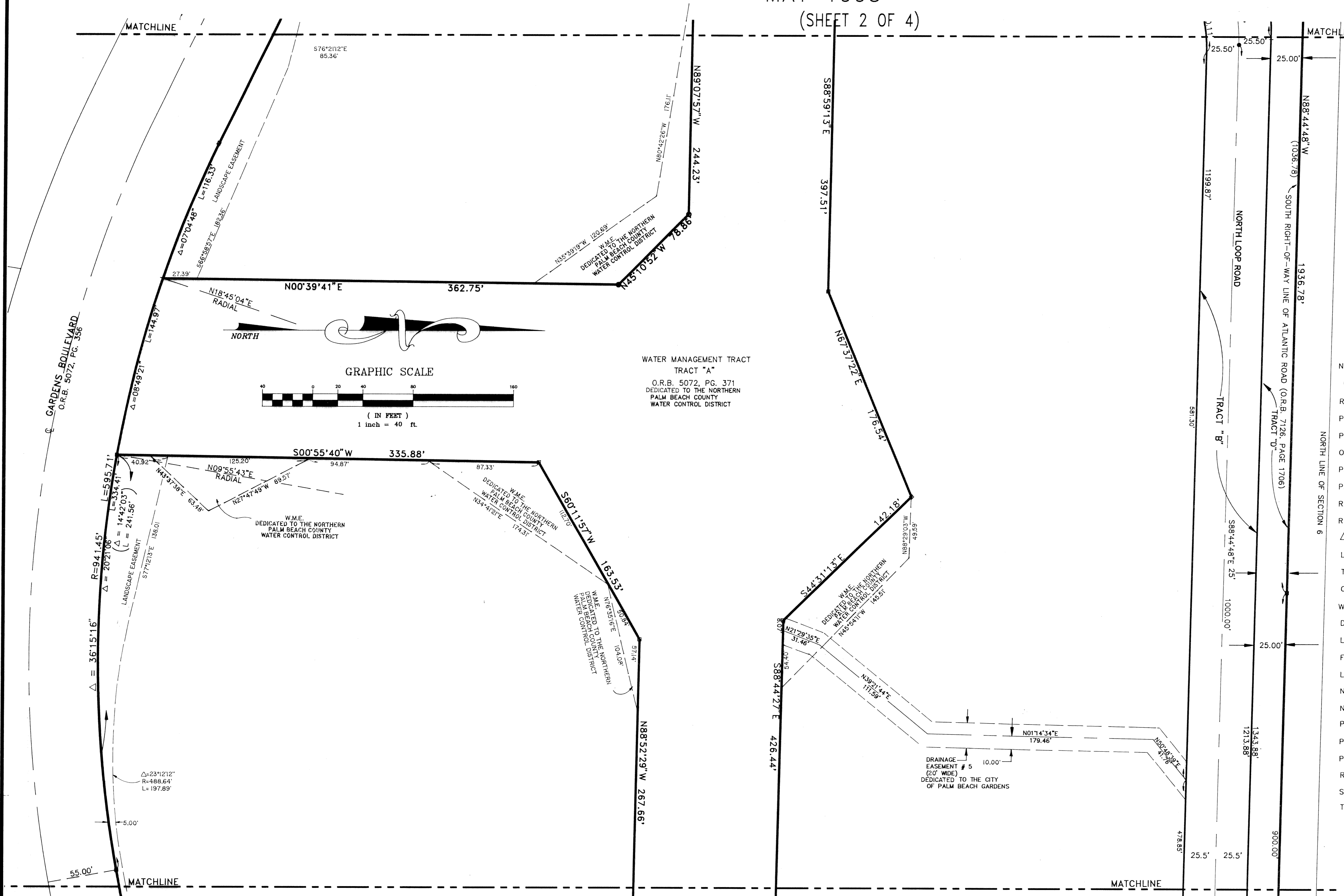


# MIRA FLORES

LYING IN SECTION 6, TOWNSHIP 42 SOUTH, RANGE 43 EAST, PALM BEACH COUNTY, FLORIDA  
 CITY OF PALM BEACH GARDENS, FLORIDA  
 MAY 1995

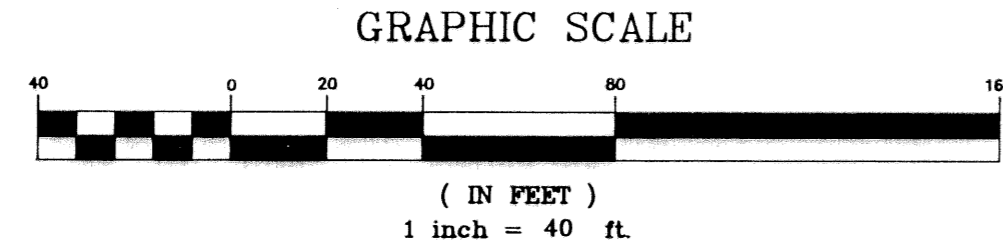
(SHEET 2 OF 4)



LEGEND OF ABBREVIATIONS

- SET PERMANENT REFERENCE MONUMENT (P.R.M.) R.L.S. #2633
- FOUND PERMANENT REFERENCE MONUMENT (P.R.M.)
- SET PERMANENT CONTROL POINTS (P.C.P.) R.L.S. # 2633
- ▲ FOUND PERMANENT CONTROL POINTS (P.C.P.)
- CHANGE IN DIRECTION
- NPBCWCD NORTHERN PALM BEACH COUNTY WATER CONTROL DISTRICT
- ⊕ CENTERLINE
- R/W RIGHT-OF-WAY
- P.B. PLAT BOOK
- PGS. PAGES
- ORB OFFICIAL RECORD BOOK
- P.C. POINT OF CURVATURE
- P.T. POINT OF TANGENCY
- RAD RADIAL
- R RADIUS
- Δ DELTA OR CENTRAL ANGLE
- L ARC OR LENGTH OF CURVE
- T TANGENT
- CH CHORD BEARING
- W.M.E. WATER MANAGEMENT EASEMENT
- DE DRAINAGE EASEMENT
- LE GENERAL UTILITY EASEMENT
- FD. FOUND
- L.A.E. LIMITED ACCESS EASEMENT
- N.T.S. NOT TO SCALE
- N.R. NOT RADIAL
- P.O.B. POINT OF BEGINNING
- P.O.C. POINT OF COMMENCEMENT
- P.L.S. PROFESSIONAL LAND SURVEYOR
- RGE. RANGE
- SEC. SECTION
- TWP. TOWNSHIP

WATER MANAGEMENT TRACT  
 TRACT "A"  
 O.R.B. 5072, PG. 371  
 DEDICATED TO THE NORTHERN  
 PALM BEACH COUNTY  
 WATER CONTROL DISTRICT



(SHEET 4 OF 4)

SUBDIVISION \* Mira Flores  
 BOOK 75 PAGE 124  
 FLOOD ZONE --- FLOOD MAP # ---  
 QUAD # --- ZONING ---  
 SE --- ZIP CODE ---  
 PUD NAME C/PB Gardens

**Shalloway, Foy,  
 Rayman & Newell, Inc.**  
 ENGINEERS - PLANNERS - SURVEYORS  
 1201 BELVEDERE ROAD, WEST PALM BEACH, FLORIDA 33405, (407) 655-1151

Date 04/05/1995  
 Designed \_\_\_\_\_  
 Drawn C.A.R.  
 Checked G. RAYMAN  
 B. LAMOTTE  
 Project Manager

SHEET NO.	3
	4
JOB NO.	93072