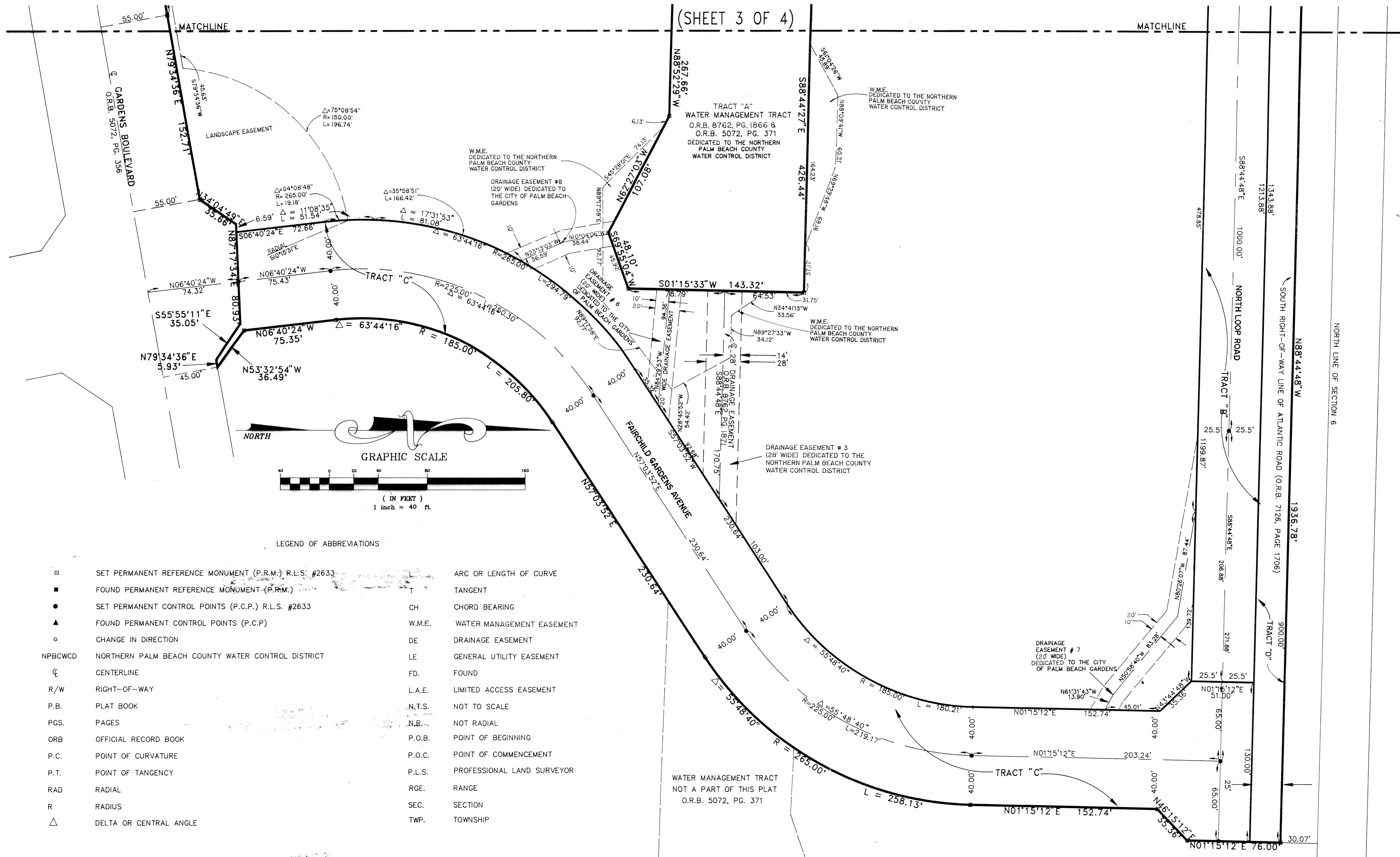
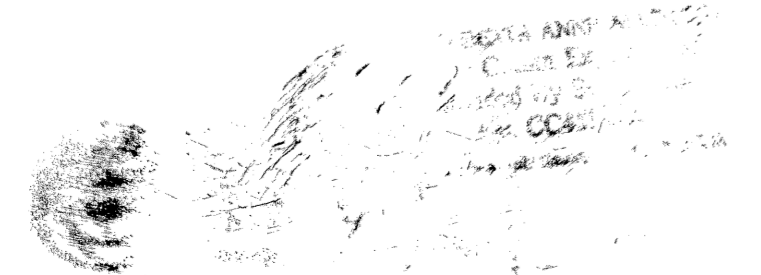


MIRA FLORES

LYING IN SECTION 6, TOWNSHIP 42 SOUTH, RANGE 43 EAST, PALM BEACH COUNTY, FLORIDA
 CITY OF PALM BEACH GARDENS, FLORIDA
 MAY 1995



SUBDIVISION # Mira Flores
 BOOK 75 PAGE 125
 FLOOD ZONE ZONING
 QUAD # SE ZIP CODE
 PUD NAME C/PB Gardens



**Shalloway, Foy,
 Rayman & Newell, Inc.**
 ENGINEERS - PLANNERS - SURVEYORS
 1201 BELVEDERE ROAD, WEST PALM BEACH, FLORIDA 33405, (407) 655-1151

Date 04/05/1995
 Designed _____
 Drawn C.A.R.
 Checked G. RAYMAN
 B. LAMOTTE
 Project Manager

SHEET 4 OF 4
 JOB NO. 93072