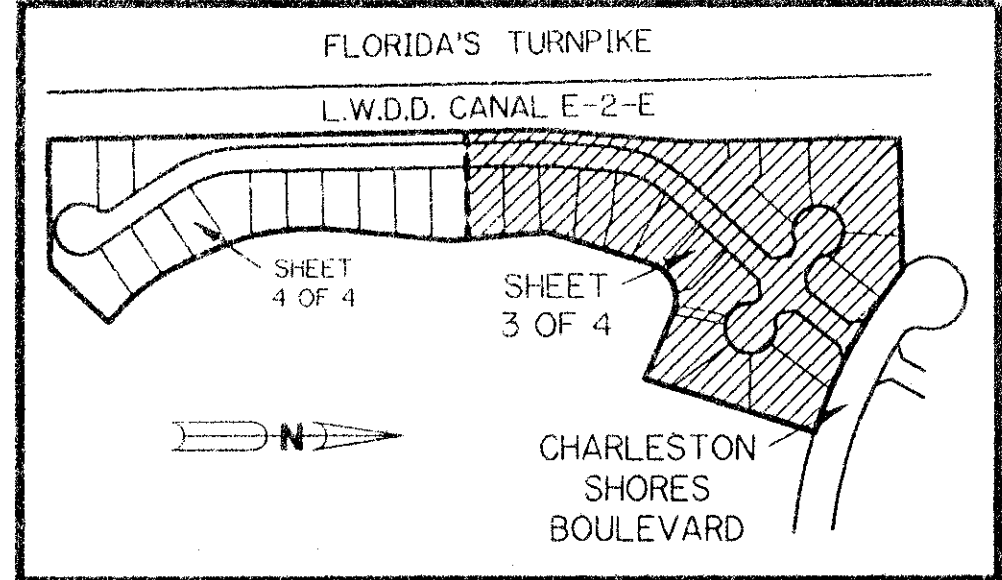


A PART OF LAKE CHARLESTON PLANNED UNIT DEVELOPMENT

# LAKE CHARLESTON - TRACT "Q"

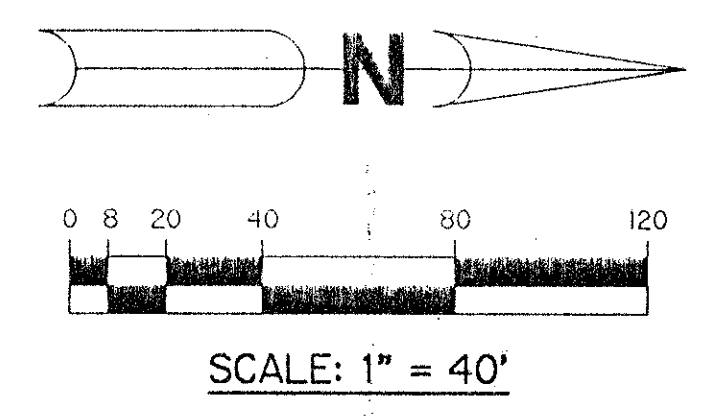
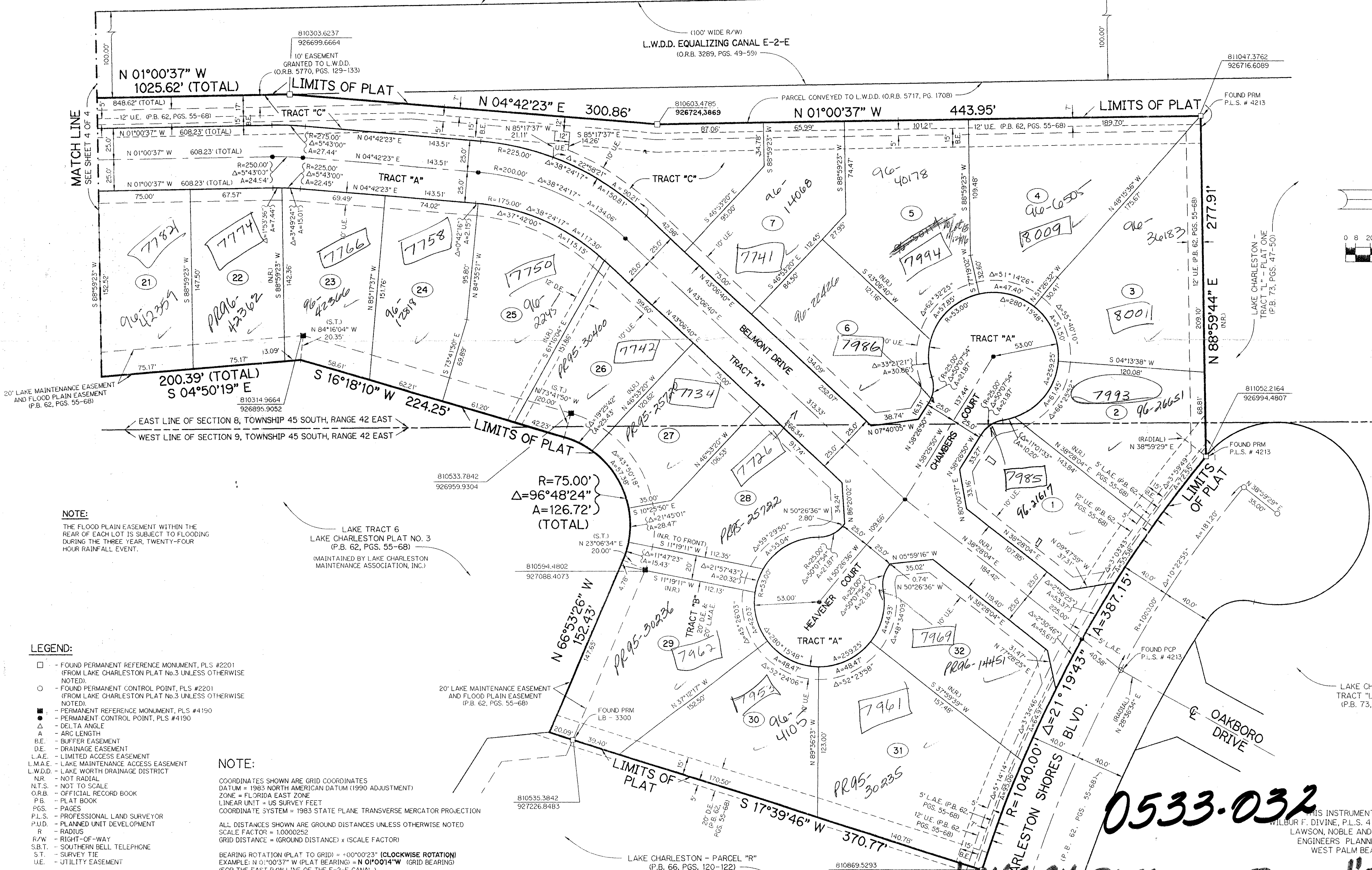
BEING A REPLAT OF ALL OF TRACT "Q" ACCORDING TO THE PLAT OF LAKE CHARLESTON PLAT NO. 3 - P.U.D. AS RECORDED IN PLAT BOOK 62, PAGES 55 THROUGH 68, INCLUSIVE, OF THE PUBLIC RECORDS OF PALM BEACH COUNTY, FLORIDA. LYING IN SECTIONS 8 AND 9, TOWNSHIP 45 SOUTH, RANGE 42 EAST.

SHEET 3 OF 4 JUNE, 1995



KEY MAP  
N.T.S.

FLORIDA'S TURNPIKE



**PET. 86-96D**  
**ALOC. #0020**  
 W/ASGMT. OF  
 CREDIT LETTER  
**5/2/2/E**

**NOTE:**  
 THE FLOOD PLAIN EASEMENT WITHIN THE REAR OF EACH LOT IS SUBJECT TO FLOODING DURING THE THREE YEAR, TWENTY-FOUR HOUR RAINFALL EVENT.

LAKE TRACT 6  
 LAKE CHARLESTON PLAT NO. 3  
 (P.B. 62, PGS. 55-68)  
 MAINTAINED BY LAKE CHARLESTON MAINTENANCE ASSOCIATION, INC.)

- LEGEND:**
- - FOUND PERMANENT REFERENCE MONUMENT, P.L.S. #2201 (FROM LAKE CHARLESTON PLAT NO. 3 UNLESS OTHERWISE NOTED)
  - - FOUND PERMANENT CONTROL POINT, P.L.S. #2201 (FROM LAKE CHARLESTON PLAT NO. 3 UNLESS OTHERWISE NOTED)
  - - PERMANENT REFERENCE MONUMENT, P.L.S. #4190
  - ▲ - PERMANENT CONTROL POINT, P.L.S. #4190
  - Δ - DELTA ANGLE
  - A - ARC LENGTH
  - B.E. - BUFFER EASEMENT
  - D.E. - DRAINAGE EASEMENT
  - L.A.E. - LIMITED ACCESS EASEMENT
  - L.M.A.E. - LAKE MAINTENANCE ACCESS EASEMENT
  - L.W.D.D. - LAKE WORTH DRAINAGE DISTRICT
  - N.R. - NOT RADIAL
  - N.T.S. - NOT TO SCALE
  - O.R.B. - OFFICIAL RECORD BOOK
  - P.B. - PLAT BOOK
  - P.G.S. - PAGES
  - P.L.S. - PROFESSIONAL LAND SURVEYOR
  - P.U.D. - PLANNED UNIT DEVELOPMENT
  - R - RADIUS
  - R/W - RIGHT-OF-WAY
  - S.B.T. - SOUTHERN BELL TELEPHONE
  - S.T. - SURVEY TIE
  - U.E. - UTILITY EASEMENT

**NOTE:**  
 COORDINATES SHOWN ARE GRID COORDINATES DATUM = 1983 NORTH AMERICAN DATUM (1990 ADJUSTMENT)  
 ZONE = FLORIDA EAST ZONE  
 LINEAR UNIT = US SURVEY FEET  
 COORDINATE SYSTEM = 1983 STATE PLANE TRANSVERSE MERCATOR PROJECTION  
 ALL DISTANCES SHOWN ARE GROUND DISTANCES UNLESS OTHERWISE NOTED  
 SCALE FACTOR = 1.0000252  
 GRID DISTANCE = (GROUND DISTANCE) x (SCALE FACTOR)  
 BEARING ROTATION (PLAT TO GRID) = +00°00'23" (CLOCKWISE ROTATION)  
 EXAMPLE: N 01°00'37" W (PLAT BEARING) = N 01°00'14" W (GRID BEARING)  
 (FOR THE EAST R/W LINE OF THE E-2-E CANAL)

SUBDIVISION - Lake Charleston Tract Q  
 BOOK 75 PAGE 128  
 FLOOD MAP # 185A  
 QUAD # 49 ZONING RT5  
 SE 86-96 ZIP CODE 33437  
 PUD NAME 8/9/45/42

TAZ-437

**0533-032** **75/128**

## LAKE CHARLESTON - TRACT "Q"