

# INDIAN HILLS, PLAT NO. 1, A P.U.D.

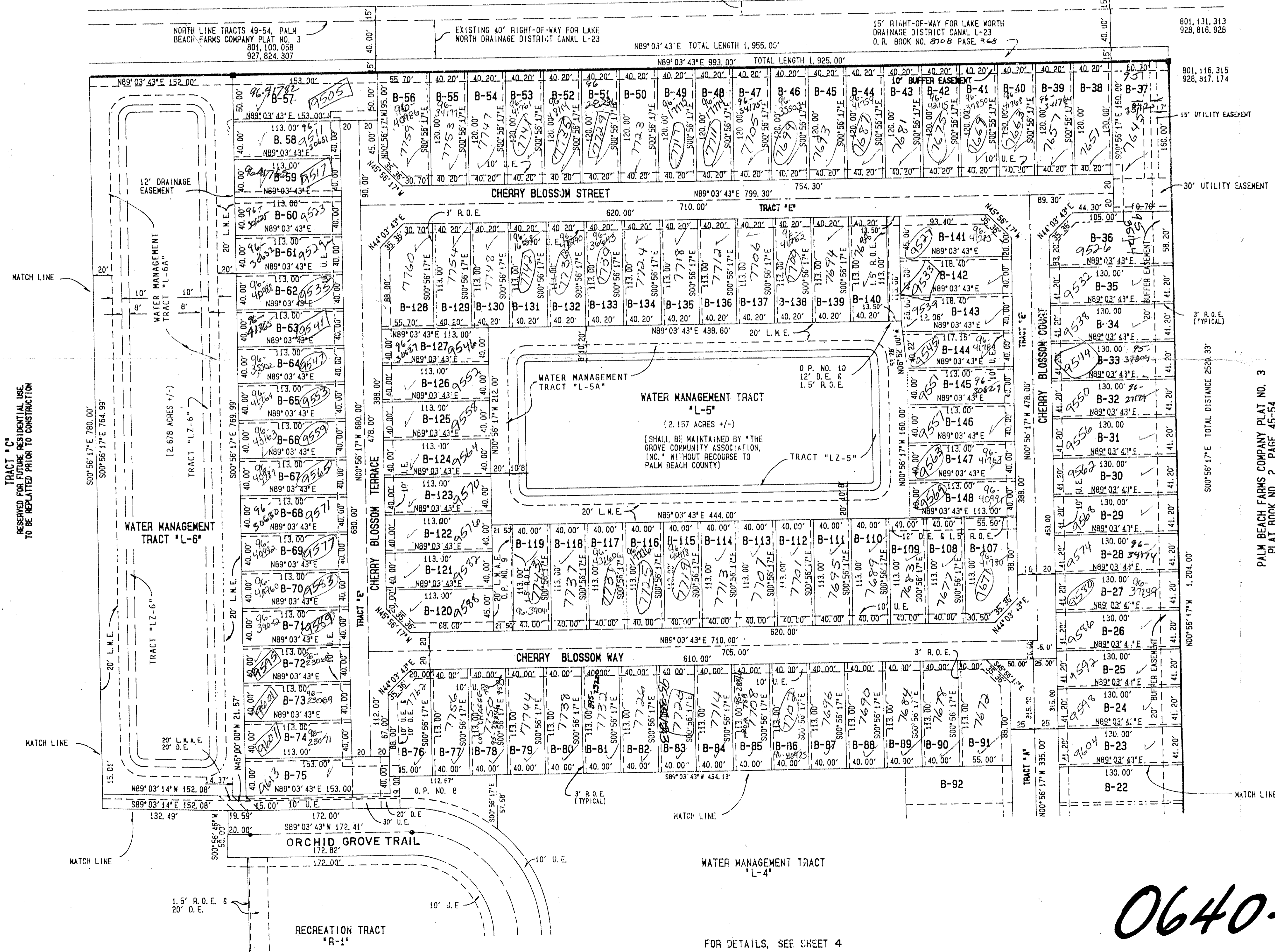
A PLAT OF A PORTION OF SECTIONS 20 & 21, TOWNSHIP 45 SOUTH, RANGE 42 EAST,  
AND ALSO BEING A REPLAT OF A PORTION OF TRACTS 49-54, 75-86, & 107-111, BLOCK 49  
AND THAT PART OF THE 30 FOOT WIDE PLATTED ROAD RIGHT-OF-WAY AS SHOWN ON THE PLAT  
OF PALM BEACH FARMS COMPANY PLAT NO. 3, AS RECORDED IN BOOK 2, PAGES 45-54,  
OF THE PUBLIC RECORDS OF PALM BEACH COUNTY, FLORIDA

JUNE, 1995  
SHEET 5 OF 7

PALM ISLES III, A P.U.D.  
PLAT BOOK 71, PAGE 89-93

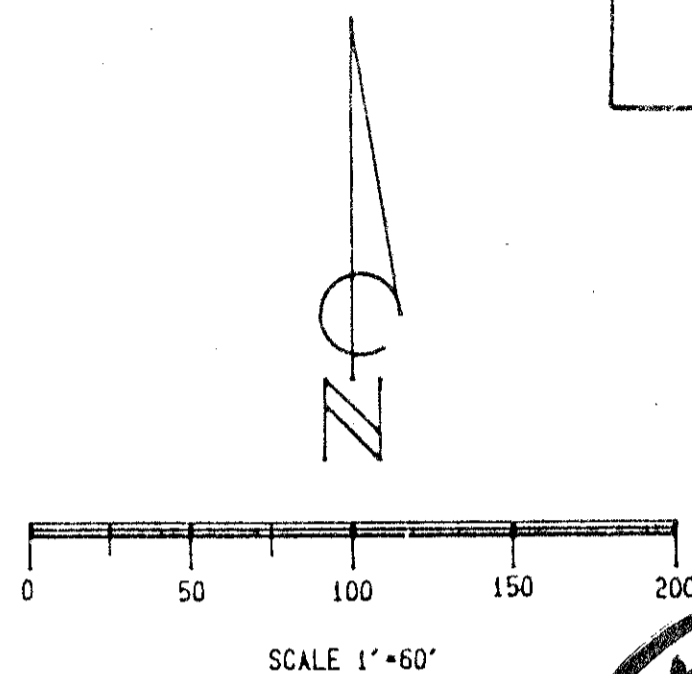
15' PLATTED ROAD RIGHT-OF-WAY BY PLAT  
PALM BEACH FARMS COMPANY PLAT NO. 3  
PLAT BOOK 2, PAGE 45

SOUTH LINE PALM ISLES III



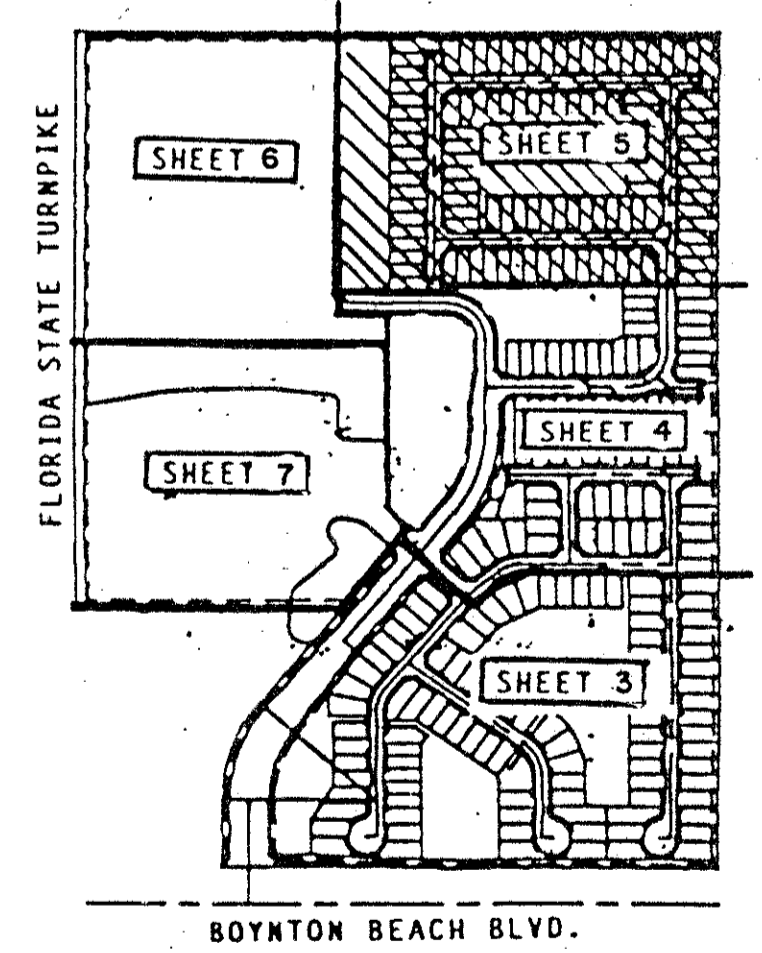
0640-001

137



*PET. 94-24  
CURRENT  
5/2/2/I*

- LEGEND**
- P.M. PERMANENT REFERENCE MONUMENT
  - P.C.P. PERMANENT CONTROL POINT
  - U.E. UTILITY EASEMENT (SIZE AS NOTED)
  - L.A.E. LIMITED ACCESS EASEMENT
  - L.M.E. LAKE MAINTENANCE EASEMENT
  - D.E. DRAINAGE EASEMENT (SIZE AS NOTED)
  - O.P.S. OPEN SPACE
  - B.E. BUFFER EASEMENT (SIZE AS NOTED)
  - L.M.E. LAKE MAINTENANCE EASEMENT
  - R.O.E. ROOF OVERHANG EASEMENT (3' OR 1.5')
  - M.S.P. MELL SITE TRACT
  - (R) RADIAL PROPERTY LINE
  - (LZ) LITTORAL ZONE
  - (NR) NONRADIAL PROPERTY LINE



FOR DETAILS, SEE SHEET 6  
TRACT "C"  
RESERVED FOR FUTURE RESIDENTIAL USE  
TO BE REPLATED PRIOR TO CONSTRUCTION

FOR DETAILS, SEE SHEET 4

Subdivision Indian Hills, Plat No. 1  
BOOK 75 PAGE 137  
FLOOD ZONE B  
ZONING PUD  
QUAD # 50  
SE  
PUD NAME Same 29.2/45/42  
ZIP CODE 33437

7AZ-443

0640-001

INDIAN HILLS, PLAT No. 1

75/137

Richard L. Shephard and Associates  
318 SOUTH FEDERAL HIGHWAY  
P.O. BOX 758  
BOYNTON BEACH, FLORIDA 33426  
Phone (407) 381-0888  
Fax (407) 737-6546  
FAX (407) 734-7546