

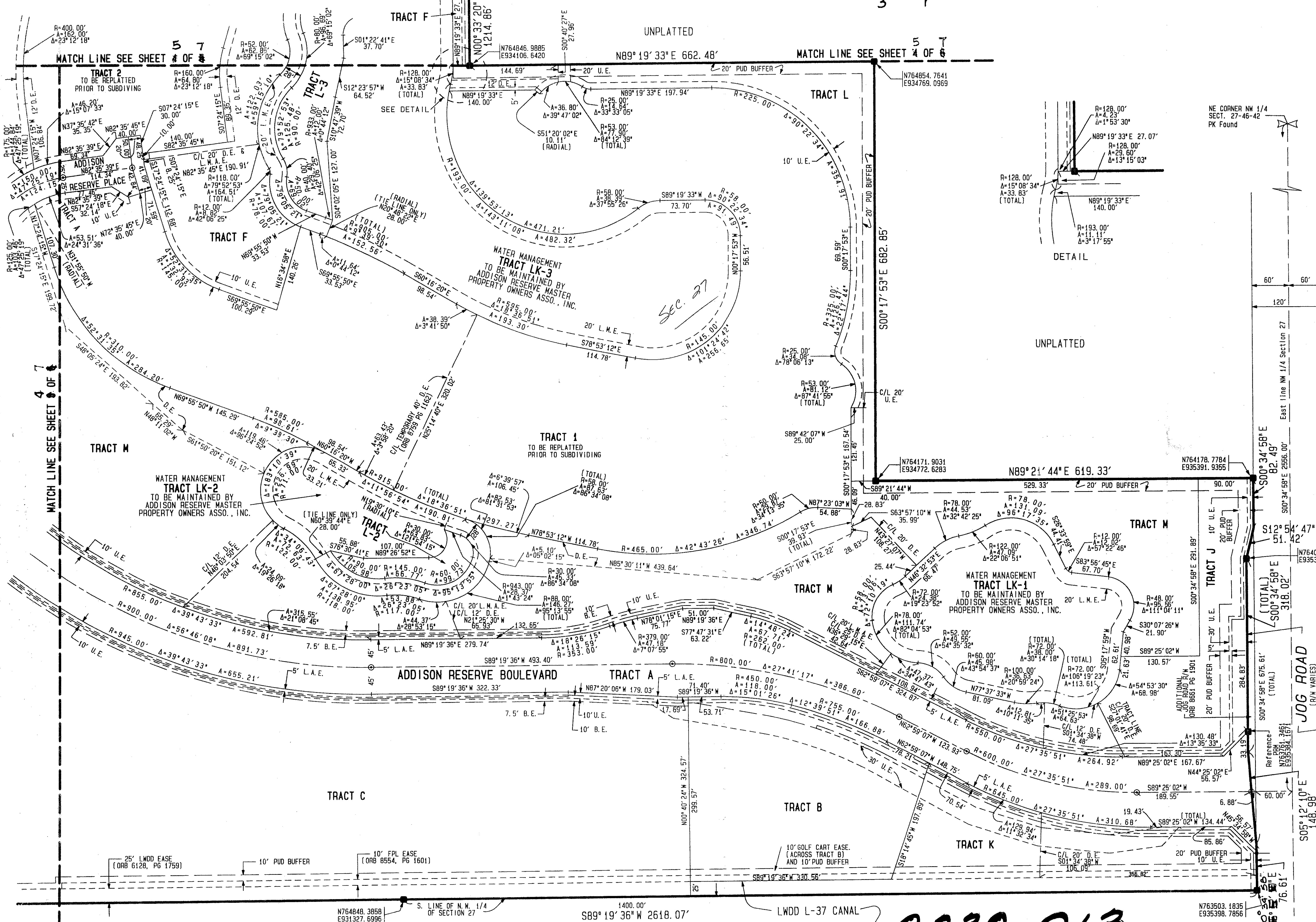
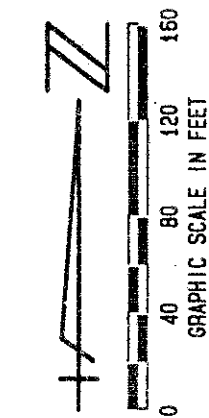
# ADDISON RESERVE PLAT ONE

PART OF THE GLENEAGLES/POLO CLUB WEST P. U. D.  
SITUATE IN SECTIONS 27 AND 28, TOWNSHIP 46 SOUTH, RANGE 42 EAST  
PALM BEACH COUNTY, FLORIDA  
FEBRUARY, 1995

SHEET 3 OF 5

# 145

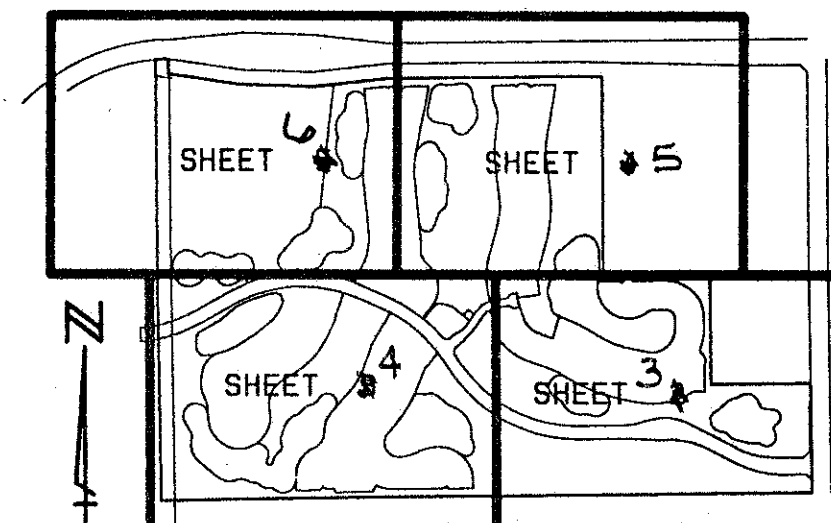
STATE OF FLORIDA  
COUNTY OF PALM BEACH  
THIS PLAT WAS FILED FOR  
RECORD \_\_\_\_\_ DAY OF \_\_\_\_\_  
AD. 1995 AND DULY RECORDED  
IN PLAT BOOK \_\_\_\_\_ ON PAGES \_\_\_\_\_  
AND \_\_\_\_\_  
DOROTHY H. WILKEN, CLERK  
BY: \_\_\_\_\_, D. C.



*PET. 80-215H  
5/3/3/K*

- LEGEND:**
- L. M. D. D. LAKE WORTH DRAINAGE DISTRICT
  - FPL FLORIDA POWER & LIGHT
  - ORB OFFICIAL RECORD BOOK
  - PRBC PALM BEACH COUNTY
  - PRM PERMANENT REFERENCE MONUMENT
  - P. B. PLAT BOOK
  - PG. PAGES
  - PAGE PAGE
  - U. E. UTILITY EASEMENT
  - D. E. DRAINAGE EASEMENT
  - A. E. ACCESS EASEMENT AND MAINTENANCE EASEMENT
  - TWP. TOWNSHIP
  - RANGE RANGE
  - NON RADIAL CENTERLINE
  - PERMANENT CONTROL POINT
  - PERMANENT REFERENCE MONUMENT SET PLS. 4763
  - PERMANENT REFERENCE MONUMENT FOUND
  - L. M. A. E. LAKE MAINTENANCE ACCESS EASEMENT
  - R. M. E. RIGHT OF WAY
  - EASE EASEMENT
  - P. U. D. PLANNED UNIT DEVELOPMENT
  - BU. E. BUFFER EASEMENT
  - L. A. E. LIMITED ACCESS EASEMENT
- ALL DISTANCES ARE GROUND  
SCALE FACTOR = 1.0000242  
SEE SHEET # OF # FOR ENTRANCE  
EASEMENT DETAIL.

JOG RD R/W  
ORB 8661 PG 1901  
ORB 1356 PG 68  
ORB 5873 PG 1295  
ORB 1354 PG 112  
ORB 5833 PPG 995



SHEET LOCATION MAP  
NOT TO SCALE  
**75/145** 3 7  
SHEET # OF #

**MOCK, ROOS & ASSOCIATES, INC.**  
5720 CORPORATE WAY, WEST PALM BEACH, FL 33407 (407) 693-3113

SCALE: 1"=80' DATE: FEBRUARY 1995  
P. A. NO. 94182.00 DWG. NO. 45-42-27-33

**ADDISON RESERVE PLAT ONE**  
PART OF "GLENEAGLES/POLO CLUB WEST, P. U. D."  
SECTIONS 27 & 28, TOWNSHIP 46 SOUTH,  
RANGE 42 EAST

**0230-013**

SUBDIVISION Addison Reserve Plat One  
BOOK 75 PAGE 145  
FLOOD ZONE B FLOOD MAP # 215H  
QUAD # 52.37 ZONING RT5  
SE 80-215 ZIP CODE 33446  
PUD NAME GLENEAGLES/POLO CLUB WEST P. U. D.

REV. 5-22-95  
REV. 5-28-95  
REV. 5-17-95  
REV. 5-07-95  
CADD FILE  
TWKCR006

REV. 5-22-95  
REV. 5-28-95  
REV. 5-17-95  
REV. 5-07-95

REV. 5-22-95  
REV. 5-28-95  
REV. 5-17-95  
REV. 5-07-95

REV. 5-22-95  
REV. 5-28-95  
REV. 5-17-95  
REV. 5-07-95

REV. 5-22-95  
REV. 5-28-95  
REV. 5-17-95  
REV. 5-07-95

REV. 5-22-95  
REV. 5-28-95  
REV. 5-17-95  
REV. 5-07-95

REV. 5-22-95  
REV. 5-28-95  
REV. 5-17-95  
REV. 5-07-95

REV. 5-22-95  
REV. 5-28-95  
REV. 5-17-95  
REV. 5-07-95

REV. 5-22-95  
REV. 5-28-95  
REV. 5-17-95  
REV. 5-07-95

REV. 5-22-95  
REV. 5-28-95  
REV. 5-17-95  
REV. 5-07-95

REV. 5-22-95  
REV. 5-28-95  
REV. 5-17-95  
REV. 5-07-95

REV. 5-22-95  
REV. 5-28-95  
REV. 5-17-95  
REV. 5-07-95

REV. 5-22-95  
REV. 5-28-95  
REV. 5-17-95  
REV. 5-07-95

REV. 5-22-95  
REV. 5-28-95  
REV. 5-17-95  
REV. 5-07-95

REV. 5-22-95  
REV. 5-28-95  
REV. 5-17-95  
REV. 5-07-95

REV. 5-22-95  
REV. 5-28-95  
REV. 5-17-95  
REV. 5-07-95

REV. 5-22-95  
REV. 5-28-95  
REV. 5-17-95  
REV. 5-07-95

REV. 5-22-95  
REV. 5-28-95  
REV. 5-17-95  
REV. 5-07-95

REV. 5-22-95  
REV. 5-28-95  
REV. 5-17-95  
REV. 5-07-95

REV. 5-22-95  
REV. 5-28-95  
REV. 5-17-95  
REV. 5-07-95

REV. 5-22-95  
REV. 5-28-95  
REV. 5-17-95  
REV. 5-07-95