

# MONTAUK HARBOR REPLAT

A REPLAT OF ALL OF MONTAUK HARBOR AS RECORDED IN PLAT BOOK 73, PAGES 107 THRU 109  
PUBLIC RECORDS OF PALM BEACH COUNTY, FLORIDA, SAID PARCEL BEING A PART OF  
WELLINGTON, A PLANNED UNIT DEVELOPMENT, LYING IN SECTION 10, TOWNSHIP 44  
SOUTH, RANGE 41 EAST, PALM BEACH COUNTY, FLORIDA.

SHEET 4 OF 4

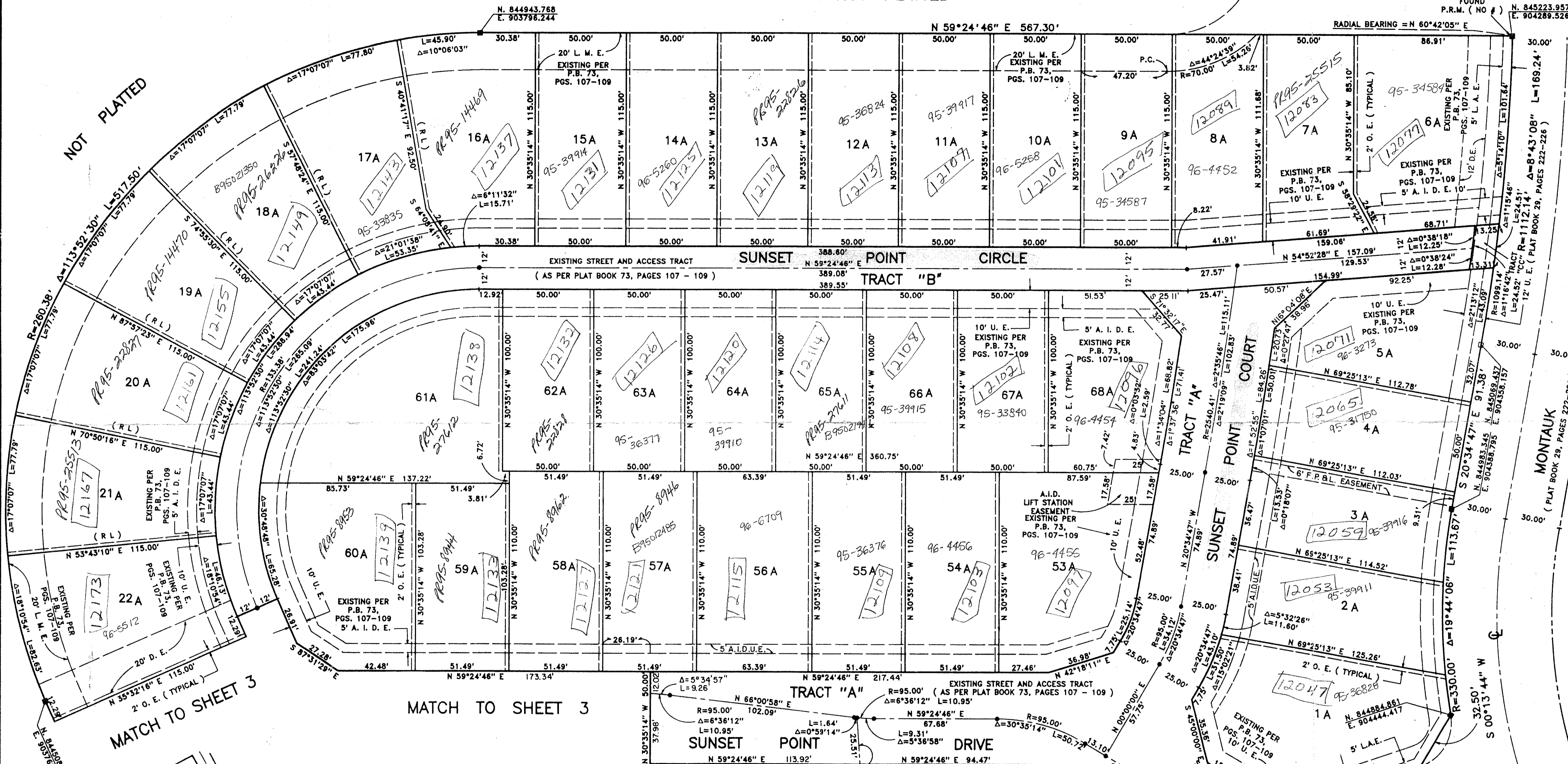
JULY, 1995

19

STATE OF FLORIDA  
COUNTY OF PALM BEACH  
This Plat was filed for record at \_\_\_\_\_  
M. this \_\_\_\_\_ day of \_\_\_\_\_, 19\_\_\_\_  
and duly recorded in Plat Book No. \_\_\_\_\_  
on Page \_\_\_\_\_  
Dorothy H. Wiker, Clerk of the Circuit Court  
By \_\_\_\_\_ D.C.

SOUTH SHORE NO. 1 OF WELLINGTON  
(PLAT BOOK 29, PAGES 222-226)

NOT PLATTED



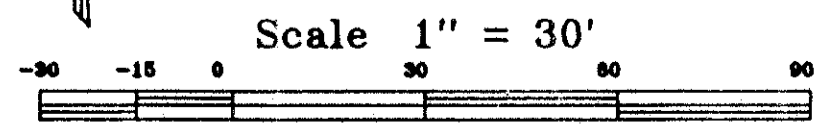
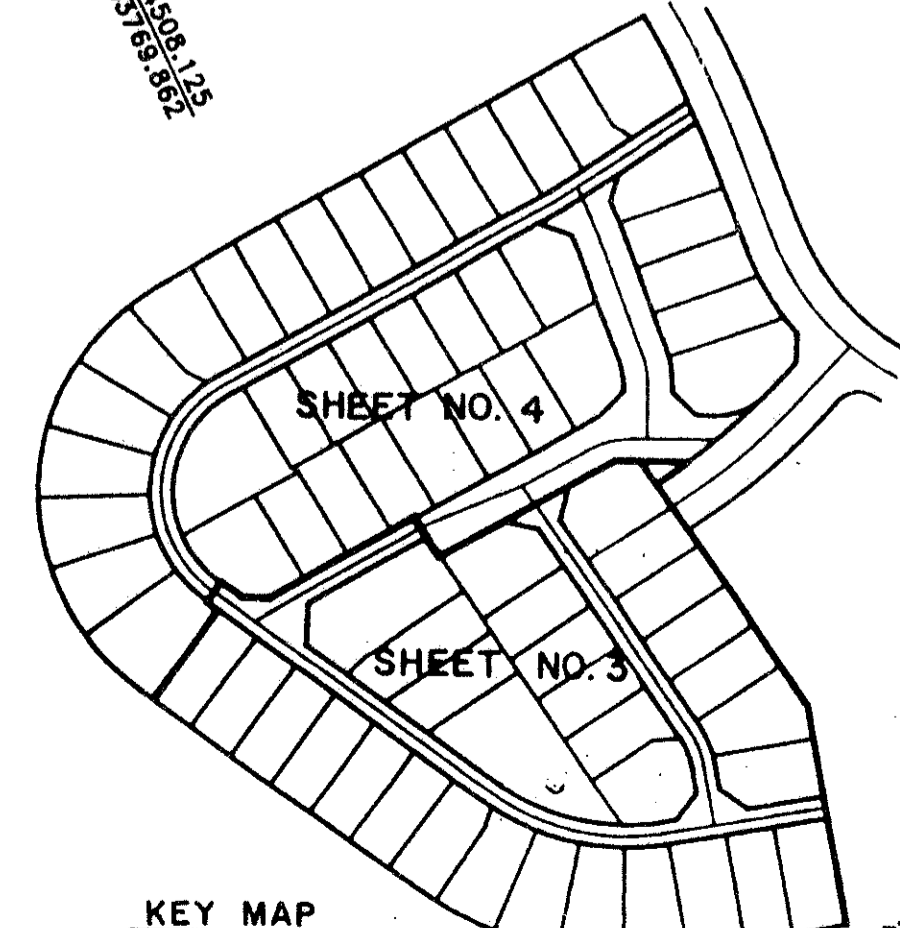
PET. 86-32J  
CURRENT  
5/2/4/G

DRIVE  
MONTAUK  
SOUTH SHORE NO. 1 OF WELLINGTON  
(PLAT BOOK 29, PAGES 222-226)

Pt. TR. GA  
WELLINGTON PUD

TAZ-730

SUBDIVISION # MONTAUK HARBOR REPLAT  
BOOK 76 PAGE 19  
FLOOD ZONE B  
GUAD # 62  
CE 86-32  
FUD NAME SAME  
2014/4/4



COORDINATE NOTE:  
STATE PLANE COORDINATES SHOWN ARE GRID DATUM, NAD 83 1990  
ADJUSTMENT, FLORIDA EAST ZONE, COORDINATE SYSTEM 1983 STATE PLANE,  
TRANSVERSE MERCATOR PROJECTION  
LINEAR UNIT = US SURVEY FEET  
ALL DISTANCES ARE GROUND  
SCALE FACTOR - 1.0000116  
GROUND DISTANCE X SCALE FACTOR = GRID DISTANCE

S 79°59'05" W (PLAT BEARING) 00°59'25" BEARING ROTATION  
S 80°58'30" W (GRID BEARING) (CLOCKWISE) (PLAT TO GRID)

SOUTH LINE OF LOT 35A  
AS SHOWN HEREON

# MONTAUK HARBOR REPLAT

0332-112

76/19

Landmark Surveying & Mapping Inc.  
1850 FOREST HILL BOULEVARD  
PH. (407)433-5405 SUITE 100 W.P.B. FLORIDA

MONTAUK HARBOR REPLAT