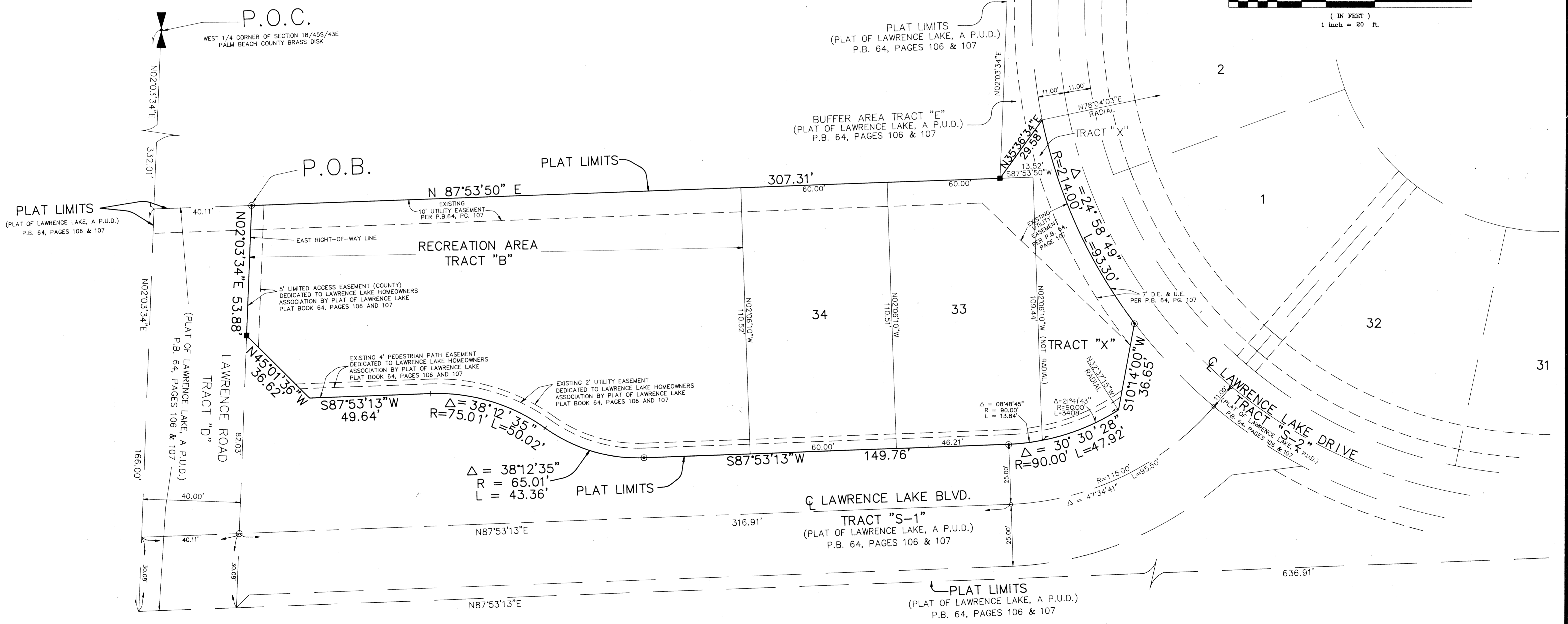
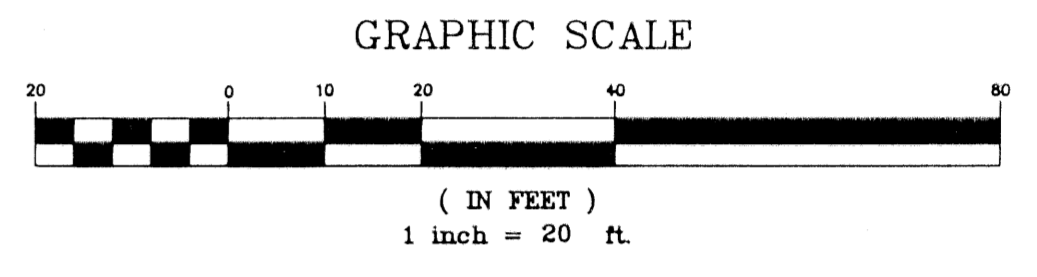
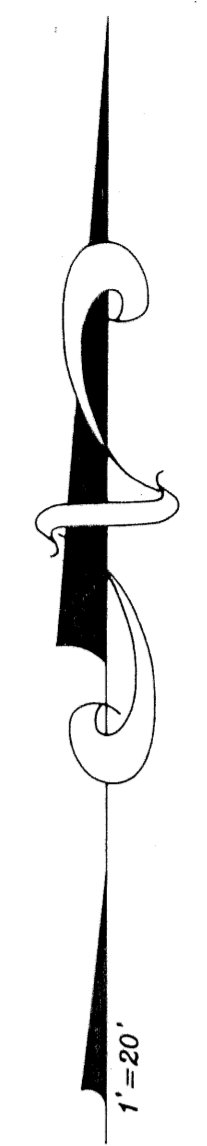
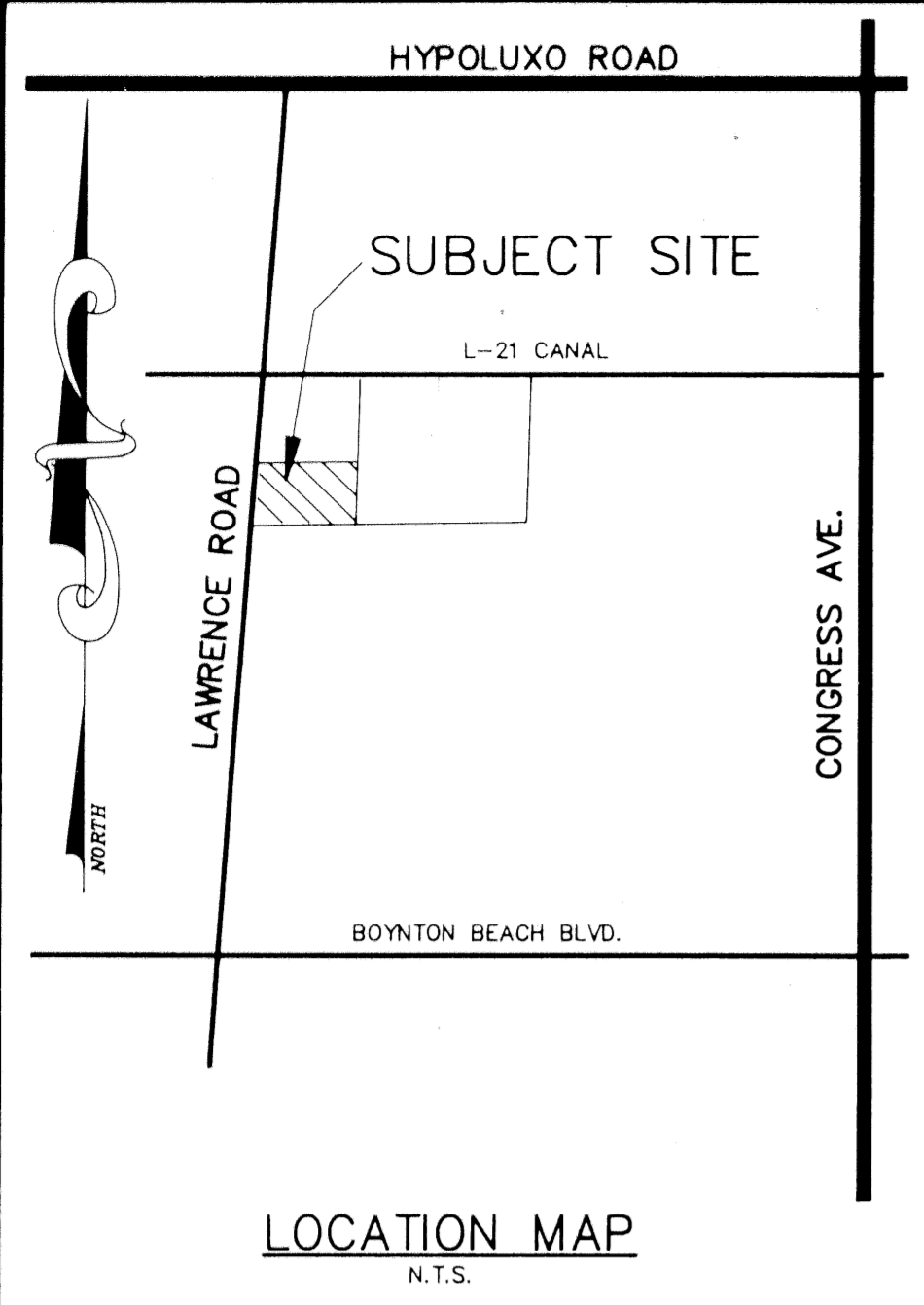


STATE OF FLORIDA SS
 COUNTY OF PALM BEACH
 This plat was filed for record at
 this ___ day at
 19___ and duly recorded in
 Plat Book No. ___ on page ___
 DOROTHY H. WILKEN, Clerk Circuit Court
 By: _____

REPLAT OF RECREATION TRACT "B" OF LAWRENCE LAKE, A P.U.D.

LYING IN SECTION 18, TOWNSHIP 45 SOUTH, RANGE 43 EAST
 CITY OF BOYNTON BEACH, PALM BEACH COUNTY, STATE OF FLORIDA

SEPTEMBER 1995 SHEET 2 OF 2



- LEGEND:**
- U.E. = UTILITY EASEMENT
 - D.E. = DRAINAGE EASEMENT
 - P.R.M. = PERMANENT REFERENCE MONUMENT
 - L.A.E. = LIMITED ACCESS EASEMENT
 - Δ = CENTRAL ANGLE
 - R = RADIUS
 - A = ARC LENGTH
 - = SET CONCRETE MONUMENT (P.L.S. #2345)
 - = SET PERMANENT CONTROL POINT (P.L.S. #2345)
 - = FOUND PERMANENT CONTROL MONUMENT (P.L.S. #2345)
 - P.O.C. = POINT OF COMMENCEMENT
 - P.O.B. = POINT OF BEGINNING

SUBDIVISION # OF RECREATION TRACT "B"
 BOOK 76 PAGE 23 FLOOD MAP # -
 QUAD # - ZONING -
 SE - ZIP CODE -
 PUD NAME CITY OF BOYNTON BEACH

F.R.S. & ASSOCIATES
 LAND SURVEYORS AND LAND PLANNERS
 901 NORTHPOINT PARKWAY, SUITE 301
 WEST PALM BEACH, FLORIDA 33407 (407) 478-7178

SCALE: 1" = 20'	APPROVED BY: G.P.W.	PLOTTED BY: L.M.W.
DATE: 09/08/95		JOB NUMBER: 95-S-31C
REPLAT OF RECREATION TRACT "B" OF LAWRENCE LAKE, A P.U.D.		SHEET NO. 2

REVISIONS	BY:	DATE: