

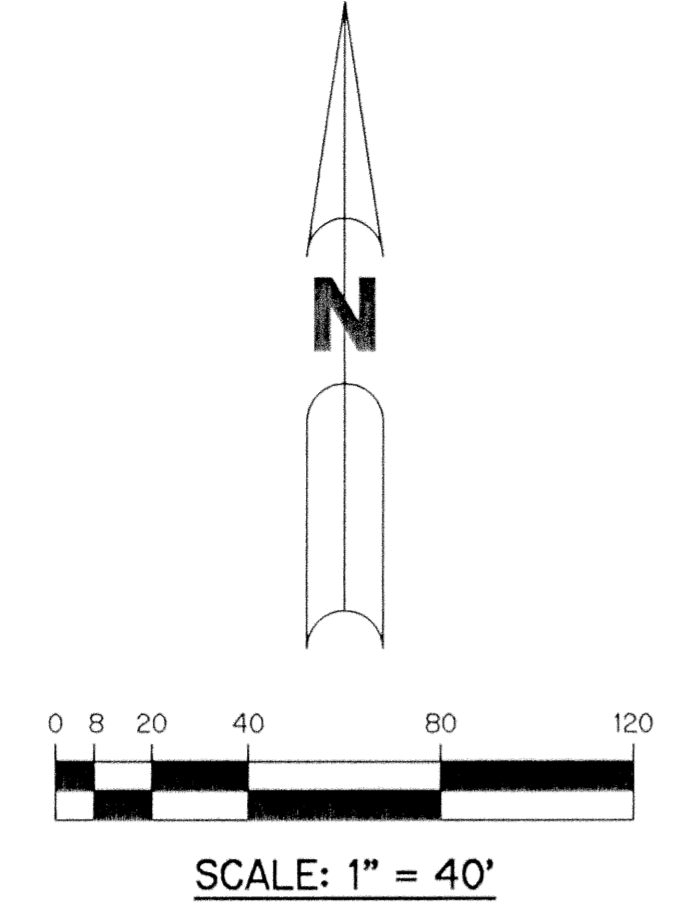
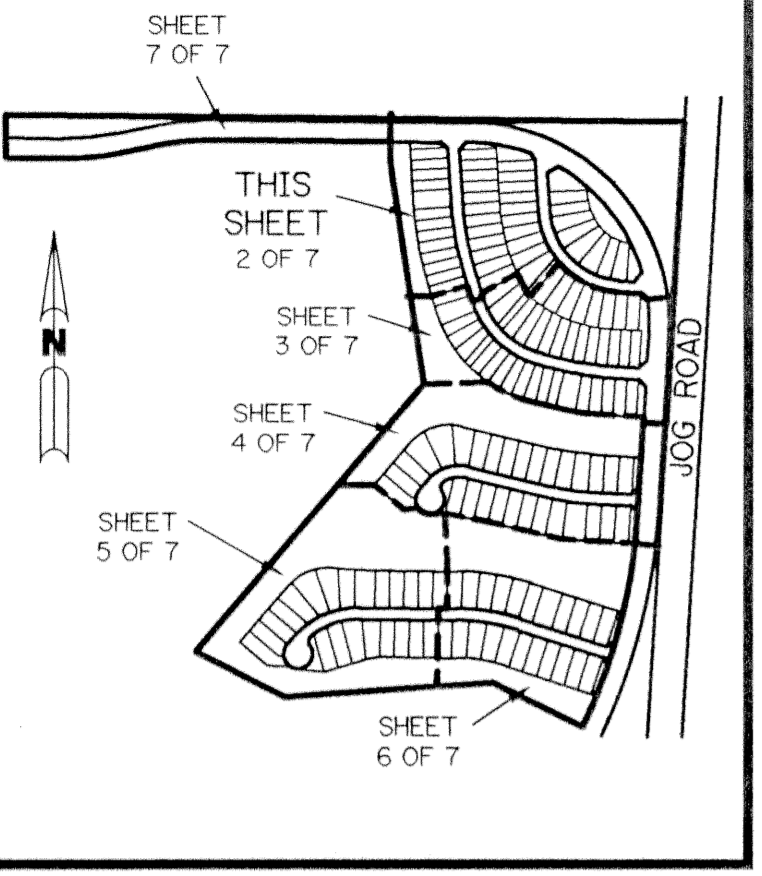
RIVERWALK - PLAT TWO

A PARCEL OF LAND LYING IN SECTION 21, TOWNSHIP 43 SOUTH, RANGE 42 EAST, CITY OF WEST PALM BEACH, PALM BEACH COUNTY, FLORIDA.

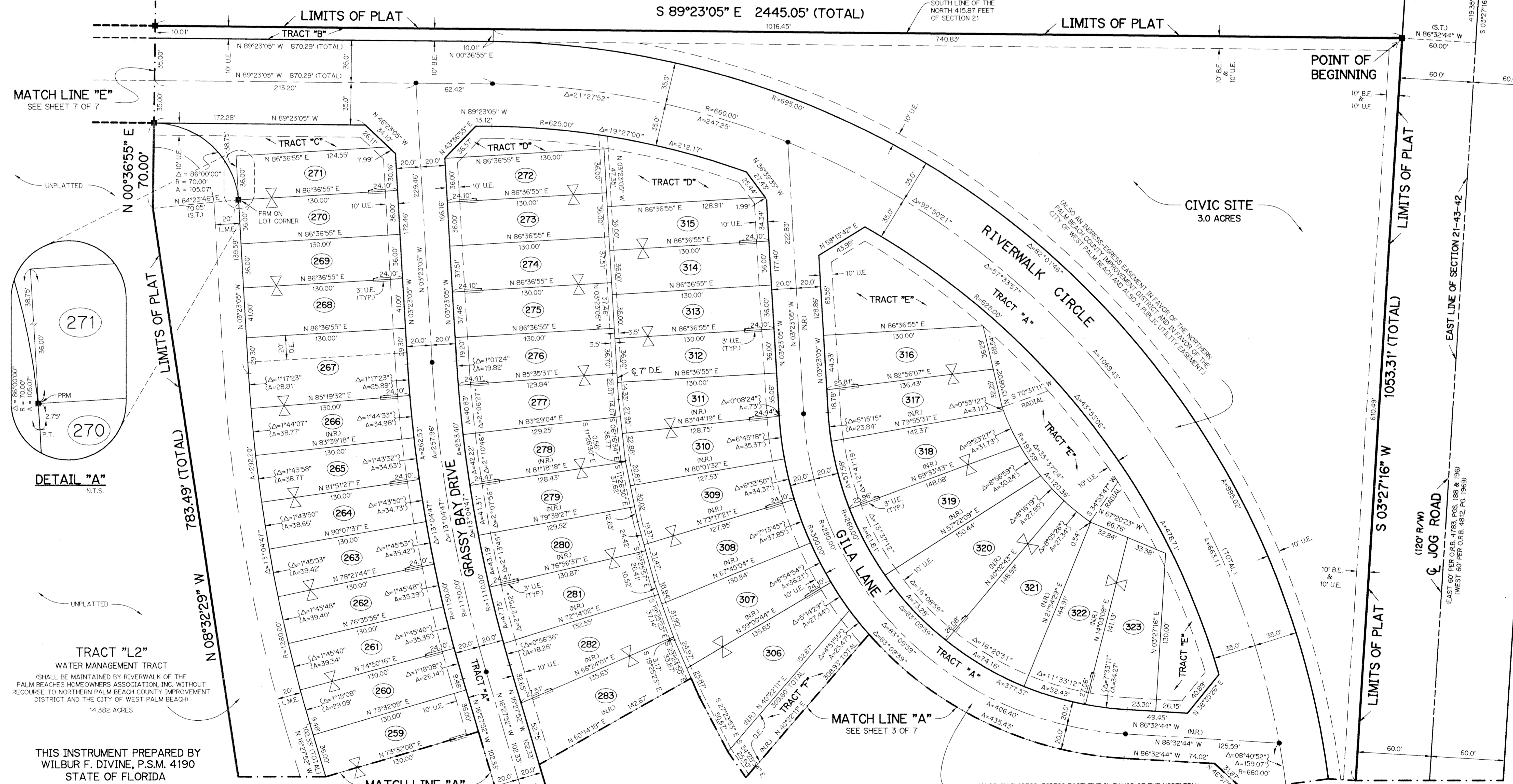
SHEET 2 OF 7 SEPTEMBER, 1995

LEGEND:

- - FOUND PERMANENT REFERENCE MONUMENT, PLS #4213
- - FOUND PERMANENT CONTROL POINT, PLS #4213
- - PERMANENT REFERENCE MONUMENT, PLS #4190
- - PERMANENT CONTROL POINT, PLS #4190
- Δ - DELTA ANGLE
- A - ARC LENGTH
- B.E. - BUFFER EASEMENT
- D.E. - DRAINAGE EASEMENT
- L.M.A.E. - LAKE MAINTENANCE ACCESS EASEMENT
- L.M.E. - LAKE MAINTENANCE EASEMENT
- L.W.D.D. - LAKE WORTH DRAINAGE DISTRICT
- NR. - NOT RADIAL
- N.T.S. - NOT TO SCALE
- O.R.B. - OFFICIAL RECORD BOOK
- P.B. - PLAT BOOK
- PGS. - PAGES
- P.S.M. - PROFESSIONAL SURVEYOR & MAPPER
- R - RADIUS
- R.E. - RIVERWALK EASEMENT
- R/W - RIGHT-OF-WAY
- S.T. - SURVEY TIE
- U.E. - UTILITY EASEMENT
- - INDICATES ZERO LOT LINE
- ⊗ - INDICATES COMMON LOT LINE
- P.T. - POINT OF TANGENCY



POINT OF COMMENCEMENT
NORTHEAST CORNER OF SECTION 21-43-42



THIS INSTRUMENT PREPARED BY
WILBUR F. DIVINE, P.S.M. 4190
STATE OF FLORIDA
LAWSON, NOBLE AND ASSOCIATES, INC.
ENGINEERS PLANNERS SURVEYORS
WEST PALM BEACH, FLORIDA

SUBDIVISION - RIVERWALK
BOOK 76
PAGE 31
FLOOD MAP -
ZONING -
QUAD -
SE -
ZIP CODE -
PUD NAME - CITY OF WEST PALM BEACH

VISTA CENTER OF PALM BEACH
PLAT NO. 3
P.B. 68, PGS. 128-134