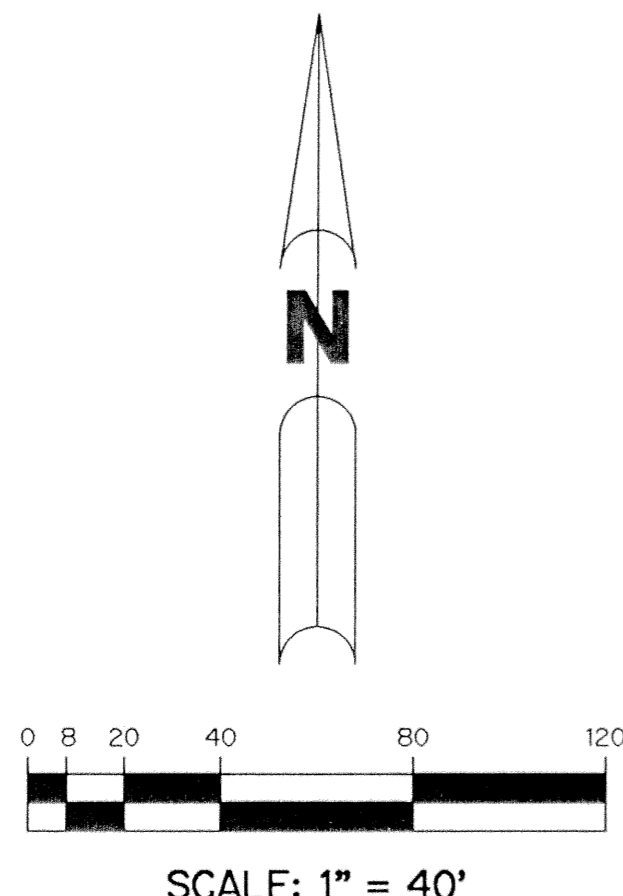
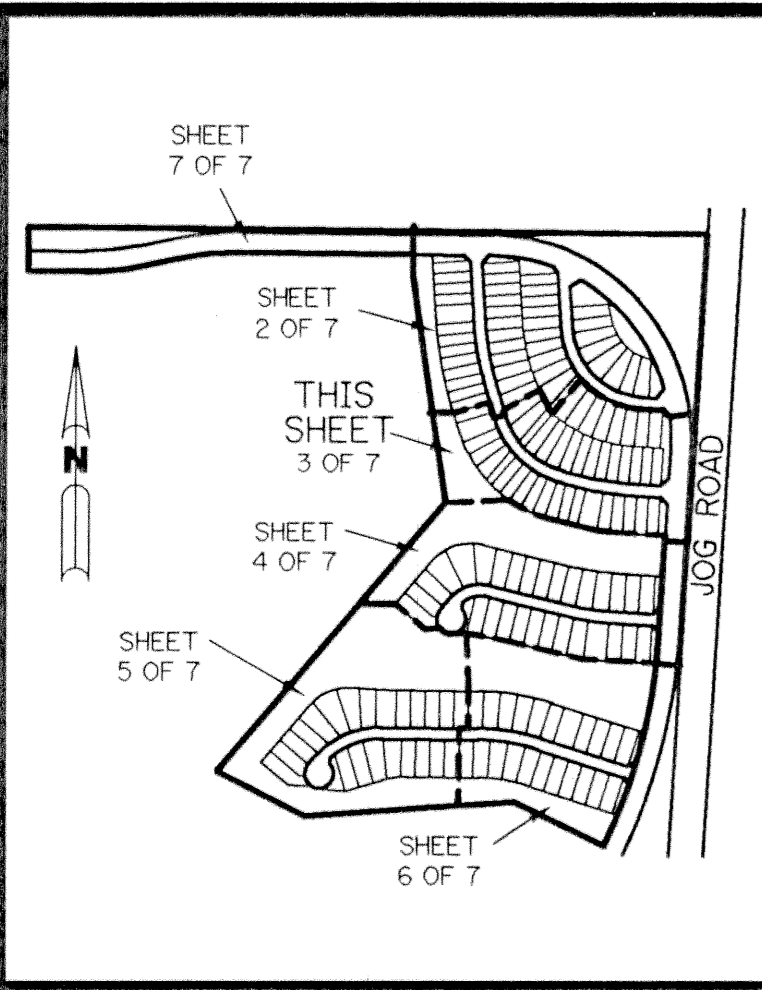


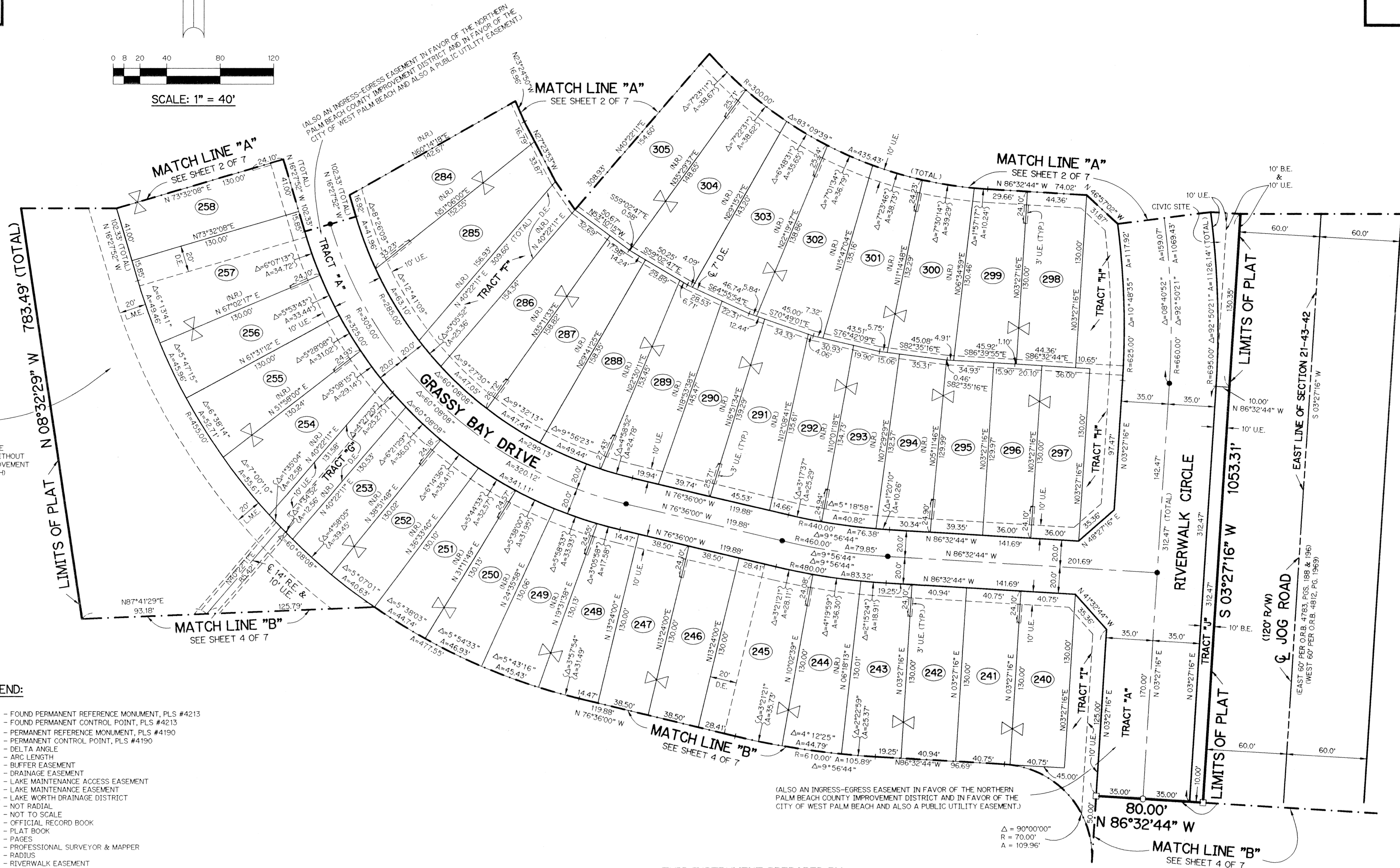
RIVERWALK - PLAT TWO

A PARCEL OF LAND LYING IN SECTION 21, TOWNSHIP 43 SOUTH,
RANGE 42 EAST, CITY OF WEST PALM BEACH,
PALM BEACH COUNTY, FLORIDA.

SHEET 3 OF 7 SEPTEMBER, 1995



KEY MAP
N.T.S.



TRACT "L2"
WATER MANAGEMENT TRACT
(SHALL BE MAINTAINED BY RIVERWALK OF THE PALM BEACHES HOMEOWNERS ASSOCIATION, INC. WITHOUT RECOURSE TO NORTHERN PALM BEACH COUNTY IMPROVEMENT DISTRICT AND THE CITY OF WEST PALM BEACH)
14.382 ACRES

LEGEND:

- - FOUND PERMANENT REFERENCE MONUMENT, PLS #4213
- - FOUND PERMANENT CONTROL POINT, PLS #4213
- - PERMANENT REFERENCE MONUMENT, PLS #4190
- - PERMANENT CONTROL POINT, PLS #4190
- Δ - DELTA ANGLE
- A - ARC LENGTH
- B.E. - BUFFER EASEMENT
- D.E. - DRAINAGE EASEMENT
- L.M.A.E. - LAKE MAINTENANCE ACCESS EASEMENT
- L.M.E. - LAKE MAINTENANCE EASEMENT
- L.W.D.D. - LAKE WORTH DRAINAGE DISTRICT
- N.R. - NOT RADIAL
- N.T.S. - NOT TO SCALE
- O.R.B. - OFFICIAL RECORD BOOK
- P.B. - PLAT BOOK
- PGS. - PAGES
- P.S.M. - PROFESSIONAL SURVEYOR & MAPPER
- R. - RADIUS
- R.E. - RIVERWALK EASEMENT
- R/W - RIGHT-OF-WAY
- S.T. - SURVEY TIE
- U.E. - UTILITY EASEMENT
- ⊥ - INDICATES ZERO LOT LINE
- ⊗ - INDICATES COMMON LOT LINE

THIS INSTRUMENT PREPARED BY
WILBUR F. DIVINE, P.S.M. 4190, STATE OF FLORIDA
LAWSON, NOBLE AND ASSOCIATES, INC.
ENGINEERS PLANNERS SURVEYORS
WEST PALM BEACH, FLORIDA

VISTA CENTER OF PALM BEACH
PLAT NO. 3
P.B. 68, PGS. 128-134