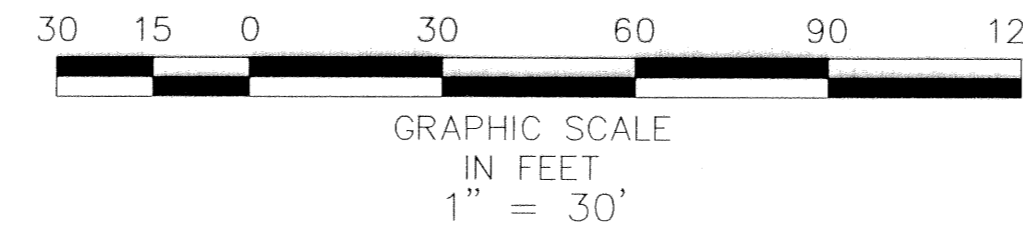
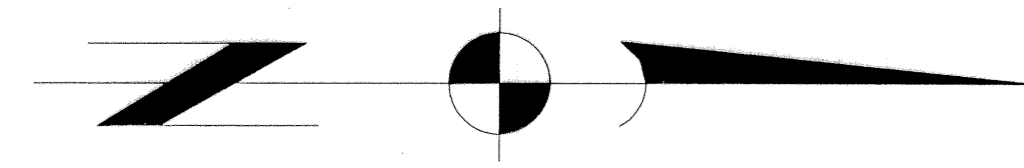


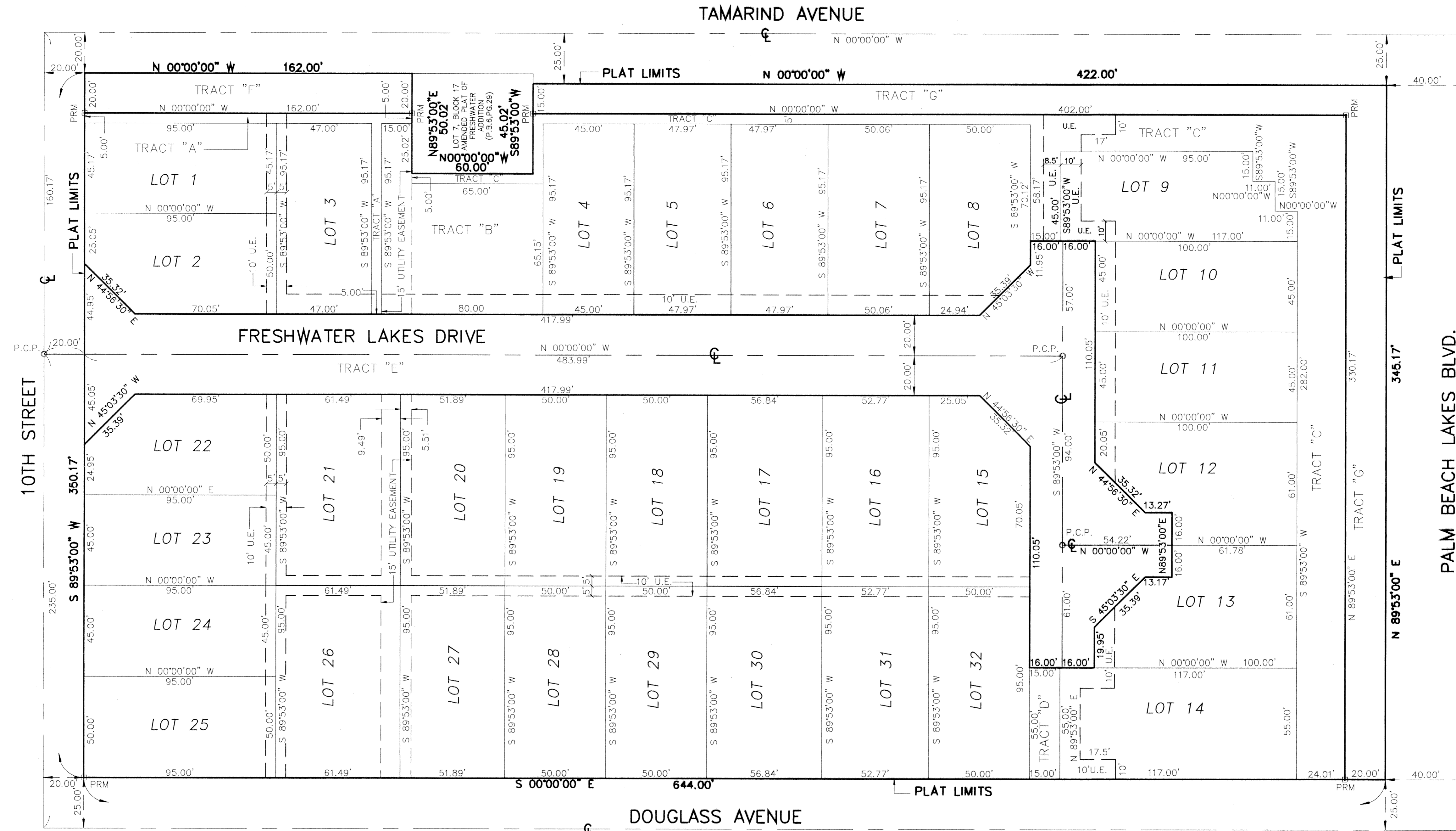
# FRESHWATER LAKES

A REPLAT OF LOTS 1 THROUGH 14, INCLUSIVE, BLOCK 24;  
 LOTS 1 THROUGH 6, INCLUSIVE; A PORTION OF LOT 7; AND LOTS 8 THROUGH 14, INCLUSIVE, BLOCK 17  
 AMENDED PLAT OF FRESHWATER ADDITION (PLAT BOOK 6, PAGE 29)  
 SECTION 16, TOWNSHIP 43 SOUTH, RANGE 43 EAST  
 CITY OF WEST PALM BEACH, PALM BEACH COUNTY, FLORIDA



PREPARED BY  
**KATHLEEN L. HALL, P.L.S.**  
**KATHLEEN L. HALL LAND SURVEYING, INC.**  
 7891 WEST SAMPLE ROAD  
 CORAL SPRINGS, FLORIDA 33065  
 (305) 344-8843  
**FEBRUARY 1995**

COUNTY OF PALM BEACH )  
 STATE OF FLORIDA )  
 THIS PLAT WAS FILED FOR  
 RECORD AT .M.  
 THIS DAY OF  
 1995, AND DULY RECORDED IN  
 PLAT BOOK , ON PAGE  
 DOROTHY H. WILKIN  
 CLERK OF CIRCUIT COURT  
 BY . D.C.



SUBDIVISION \*FRESHWATER LAKES  
 BOOK 76 PAGE 446  
 FLOOD ZONE FLOOD MAP \*  
 QUAD \* ZONING  
 SE ZIP CODE  
 PUD NAME CITY OF WEST PALM BEACH

**LEGEND**

P.R.M. [Symbol] INDICATES SET PERMANENT REFERENCE MONUMENT #4103  
 P.C.P. [Symbol] INDICATES PERMANENT CONTROL POINT  
 S.F. [Symbol] INDICATES SQUARE FEET  
 R/W [Symbol] INDICATES RIGHT-OF-WAY  
 [Symbol] INDICATES CENTERLINE  
 U.E. [Symbol] INDICATES UTILITY EASEMENT