

# PLAT OF YAMATO VILLAGE CENTER

BEING A REPLAT OF A PORTION OF TRACTS 123 AND 124, BLOCK 73, PALM BEACH FARMS COMPANY PLAT NO. 3, AS RECORDED IN PLAT BOOK 2, PAGES 45 THRU 54, PUBLIC RECORDS OF PALM BEACH COUNTY, FLORIDA, SAID PARCEL LYING IN SECTION 6, TOWNSHIP 47 SOUTH, RANGE 42 EAST, PUBLIC RECORDS OF PALM BEACH COUNTY, FLORIDA SHEET 2 OF 2 A PART OF MOON LAKE P.U.D. JULY, 1995

"SR 7-39"  
753646.059  
916885.493  
FND. PBCO CONC. MON.  
GRID  
S 01°29'39" E  
1254.71'  
SPANISH ISLES US-441  
752391.754  
916885.212  
FND. PBCO CONC. MON.  
GRID  
S 59°55'17" E  
4289.37'

WEITZER SUBDIVISION P.U.D. PLAT NO. 3  
( PLAT BOOK 53, PAGES 72 - 77 )

STATE OF FLORIDA  
COUNTY OF PALM BEACH ss  
This Plat was filed for record at  
\_\_\_ M. this \_\_\_ day of \_\_\_\_\_ 19\_\_\_  
and duly recorded in Plat Book No. \_\_\_\_\_  
on Page \_\_\_\_\_  
Dorothy H. Wilken, Clerk of the Circuit Court  
By \_\_\_\_\_ D.C.

WEITZER SUBDIVISION P.U.D. PLAT NO. 2  
( PLAT BOOK 60, PAGES 180 - 183 )

LAKERIDGE BOULEVARD  
( WEITZER SUBDIVISION P.U.D. PLAT NO. 2, PLAT BOOK 60, PAGES 180 - 183 )

P.O.B.  
S.W. CORNER OF TRACT " G "  
WEITZER SUBDIVISION P.U.D. PLAT NO. 3  
( PLAT BOOK 53, PAGES 72 - 77 )

NR  
S 89°58'24" E 389.90'

15' LANDSCAPE BUFFER

750244.197  
920989.949

### COORDINATE NOTE:

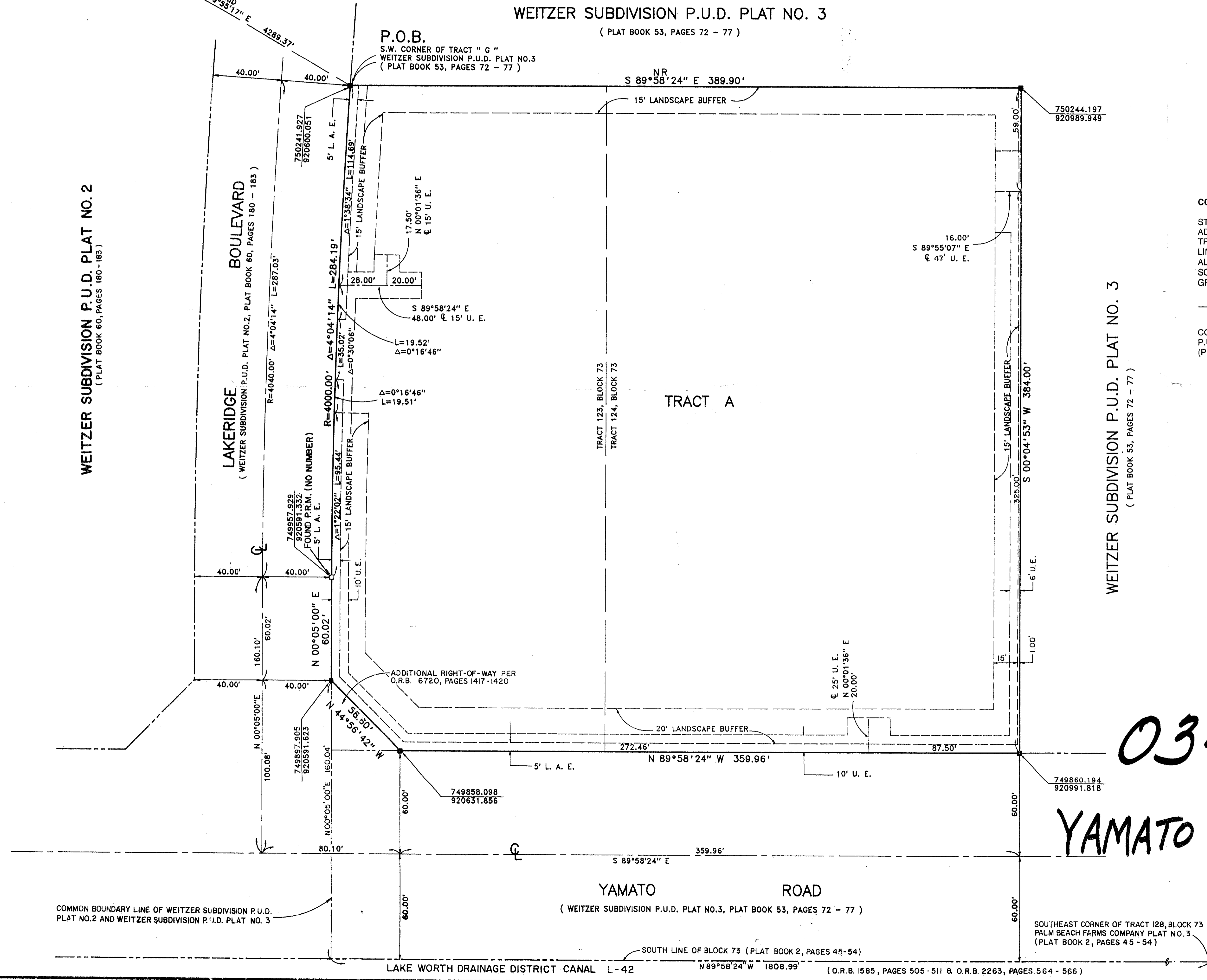
STATE PLANE COORDINATES SHOWN ARE GRID DATUM, NAD 83 1990 ADJUSTMENT, FLORIDA EAST ZONE, COORDINATE SYSTEM 1983 STATE PLANE, TRANSVERSE MERCATOR PROJECTION  
LINEAR UNIT = US SURVEY FEET  
ALL DISTANCES ARE GROUND  
SCALE FACTOR = 1.0000214  
GROUND DISTANCE X SCALE FACTOR = GRID DISTANCE

COUNTER CLOCKWISE BEARING ROTATION (PLAT TO GRID)  
S 89°58'24" E (PLAT BEARING) -00°21'37"  
N 89°39'59" E (GRID BEARING)

COMMON LINE BETWEEN PLAT AND THE SOUTH LINE OF WEITZER SUBDIVISION P.U.D. PLAT NO. 3 (PLAT BOOK 53, PAGES 72 THRU 77)

*PET. 80-206  
ALOC. #0001  
5/3/3/M*

WEITZER SUBDIVISION P.U.D. PLAT NO. 3  
( PLAT BOOK 53, PAGES 72 - 77 )



0349-009

YAMATO VILLAGE CENTER  
76/54

Scale 1" = 30'

SUBDIVISION Yamato Village Center  
BOOK 74 PAGE 54  
FLOOD MAP #215A  
QUAD # 52 ZONING RS  
SE 80-206 ZIP CODE 33434  
PUD NAME MOON LAKE

TAZ-769

COMMON BOUNDARY LINE OF WEITZER SUBDIVISION P.U.D. PLAT NO. 2 AND WEITZER SUBDIVISION P.U.D. PLAT NO. 3

YAMATO ROAD  
( WEITZER SUBDIVISION P.U.D. PLAT NO. 3, PLAT BOOK 53, PAGES 72 - 77 )

SOUTHEAST CORNER OF TRACT 128, BLOCK 73  
PALM BEACH FARMS COMPANY PLAT NO. 3  
( PLAT BOOK 2, PAGES 45 - 54 )

LAKE WORTH DRAINAGE DISTRICT CANAL L-42 N 89°58'24" W 1808.99' (O.R.B. 1585, PAGES 505-511 & O.R.B. 2263, PAGES 564-566)



Landmark Surveying & Mapping Inc.  
1850 FOREST HILL BOULEVARD  
PH. (407)433-5405 SUITE 100 W.P.B. FLORIDA

PLAT OF  
YAMATO VILLAGE CENTER