

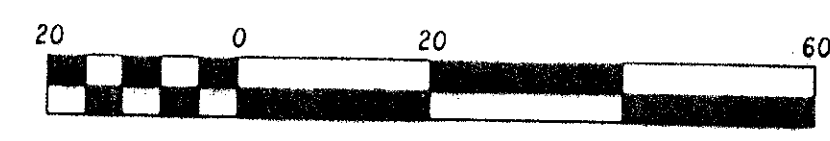
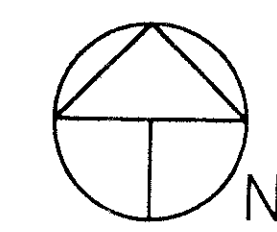
0278005

62

(A P.U.D.) MANOR FOREST PLAT NO. 2- REPLAT NO. 2

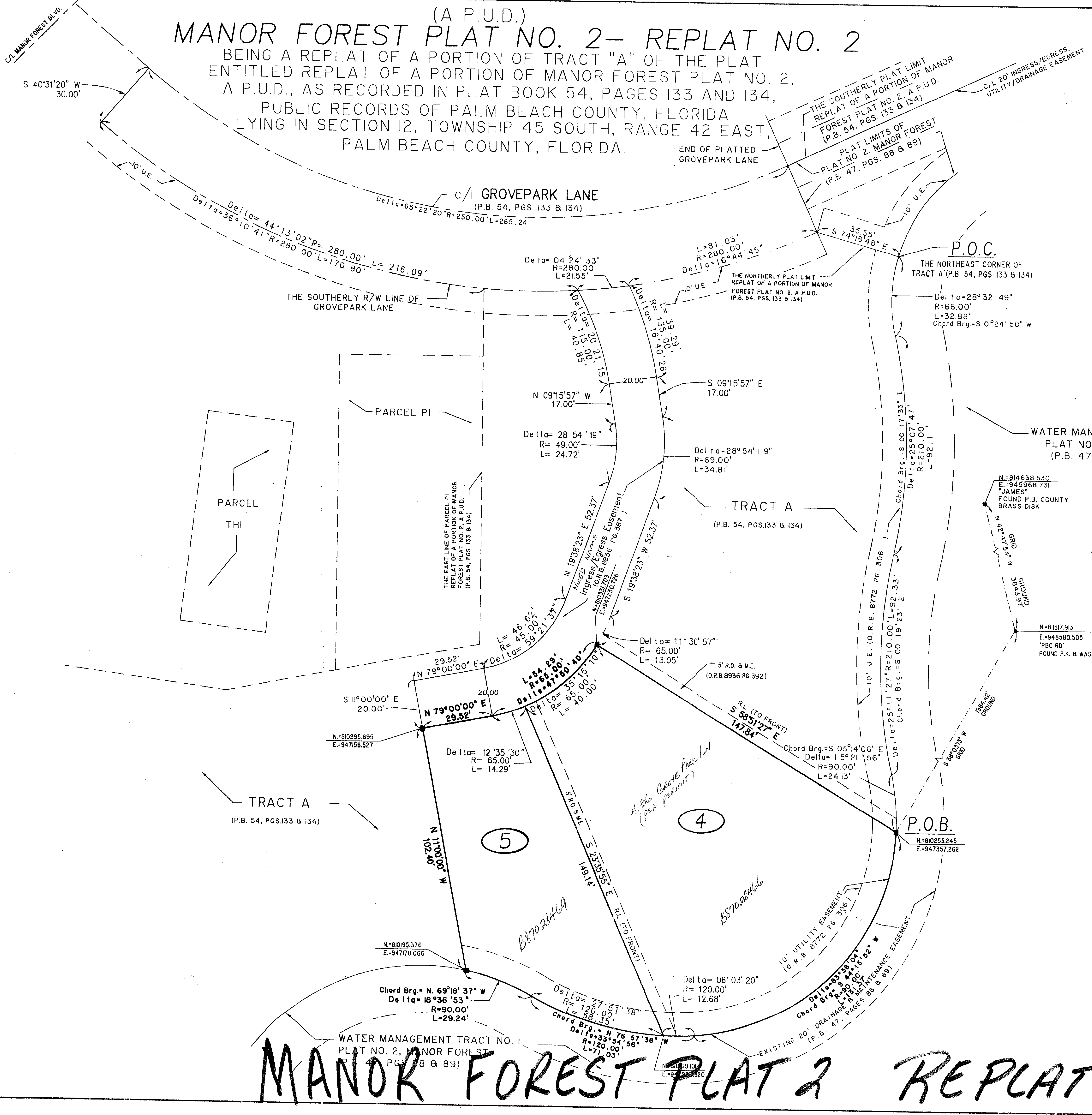
BEING A REPLAT OF A PORTION OF TRACT "A" OF THE PLAT ENTITLED REPLAT OF A PORTION OF MANOR FOREST PLAT NO. 2, A P.U.D., AS RECORDED IN PLAT BOOK 54, PAGES 133 AND 134, PUBLIC RECORDS OF PALM BEACH COUNTY, FLORIDA LYING IN SECTION 12, TOWNSHIP 45 SOUTH, RANGE 42 EAST, PALM BEACH COUNTY, FLORIDA.

STATE OF FLORIDA
COUNTY OF PALM BEACH
THIS PLAT WAS FILED FOR RECORD AT _____
M. THIS _____ DAY OF _____ 19____
AND DULY RECORDED IN PLAT BOOK NO. _____
ON PAGE _____
DOROTHY H. WILKEN, CLERK OF THE CIRCUIT COURT
BY _____ D.C.



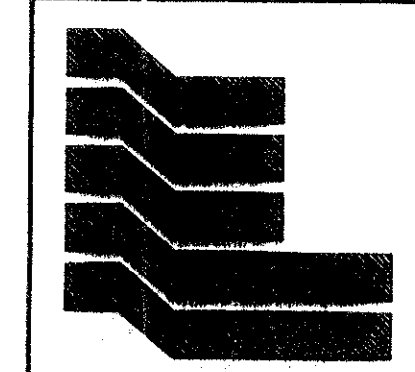
Scale 1" = 20 ft

*PET. 82-71
CURRENT
5/2/2/H*



COORDINATE NOTE
STATE PLANE COORDINATES SHOWN ARE GRID DATUM, NAD 83, 1990 ADJUSTMENT, FLORIDA EAST ZONE, COORDINATE SYSTEM 1983 STATE PLANE, TRANSVERSE MERCATOR PROJECTION
LINEAR UNIT = U.S. SURVEY FEET
ALL DISTANCES ARE GROUND
SCALE FACTOR = 1.0000382
GROUND DISTANCE X SCALE FACTOR = GRID DISTANCE
BEARING ROTATION = $\frac{00^{\circ}00'03''}{\text{COUNTER-CLOCKWISE}}$

0278-005 76/62
SHEET 2 OF 2



Landmark Surveying & Mapping
1850 Forest Hill Boulevard
Ph. (407) 433-5405 Suite 100 W.P.B. Florida
(A P.U.D.)
MANOR FOREST PLAT NO. 2
REPLAT NO. 2

MANOR FOREST PLAT 2 REPLAT 2

REPLAT NO. 2
SUBDIVISION #MANOR FOREST PLAT NO. 2
BOOK 76 PAGE 62
FLOOD ZONE B FLOOD MAP #190B
QUAD # 54 ZONING RS
SE 82-71 ZIP CODE 33436
PUB NAME SAME

TAZ-415