

THE ENCLAVE AT WOODFIELD COUNTRY CLUB

IN PART OF SECTION 4, TOWNSHIP 47 SOUTH, RANGE 42 EAST
CITY OF BOCA RATON, PALM BEACH COUNTY, FLORIDA

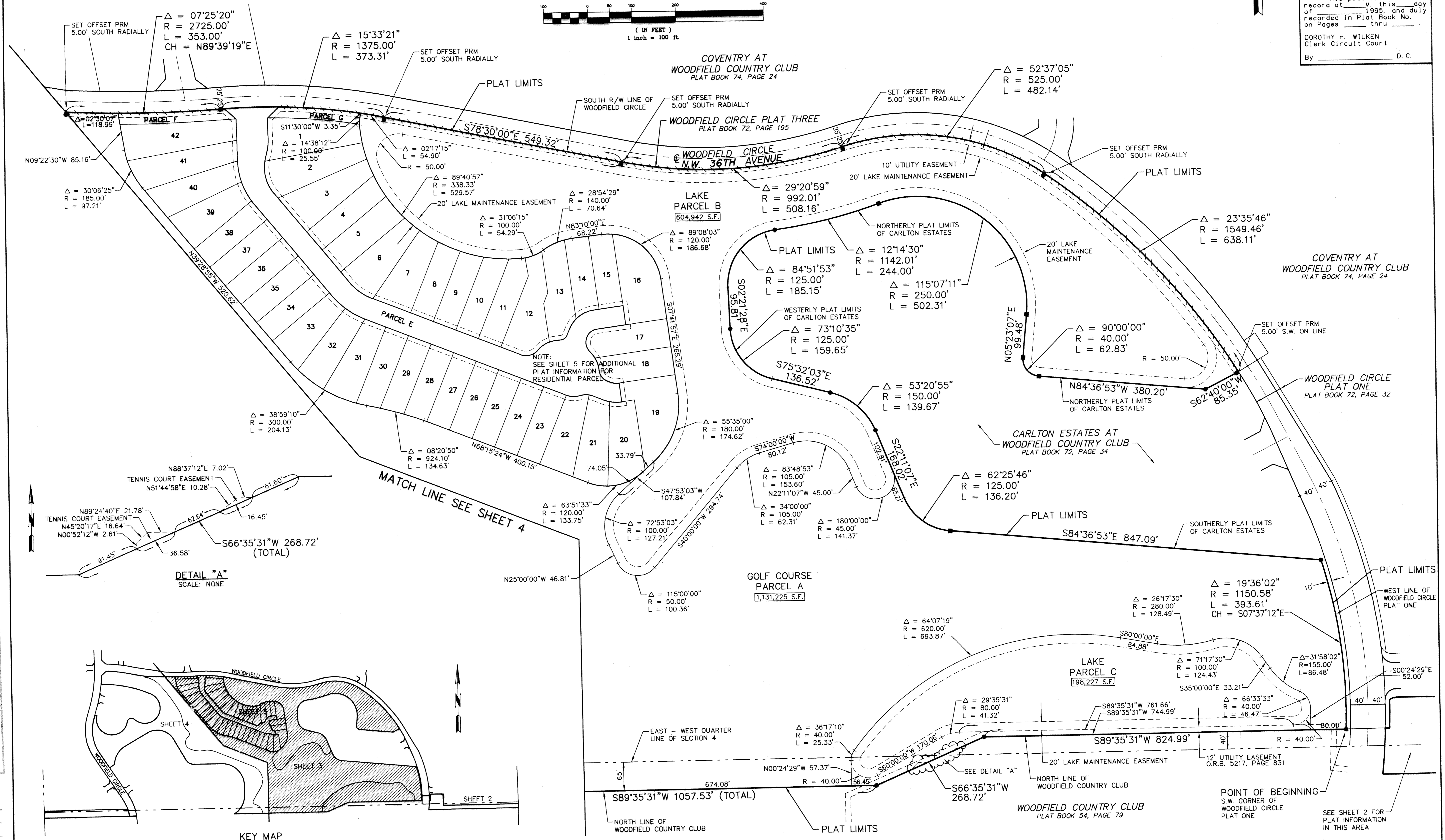
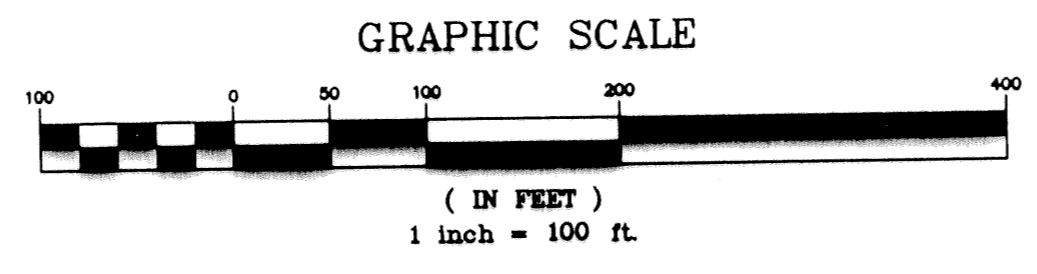
SHEET NO. 8 OF 5

GEE & JENSON
ENGINEERS - ARCHITECTS - PLANNERS, INC.
WEST PALM BEACH, FLORIDA
JUNE 1995

65

STATE OF FLORIDA
COUNTY OF PALM BEACH
This plat was filed for
record at _____ M this day
of _____ 1995, and duly
recorded in Plat Book No. _____
on Pages _____ thru _____
By _____ D. C.

BAY CREEK AT
WOODFIELD COUNTRY CLUB
PLAT BOOK 72, PAGE 193

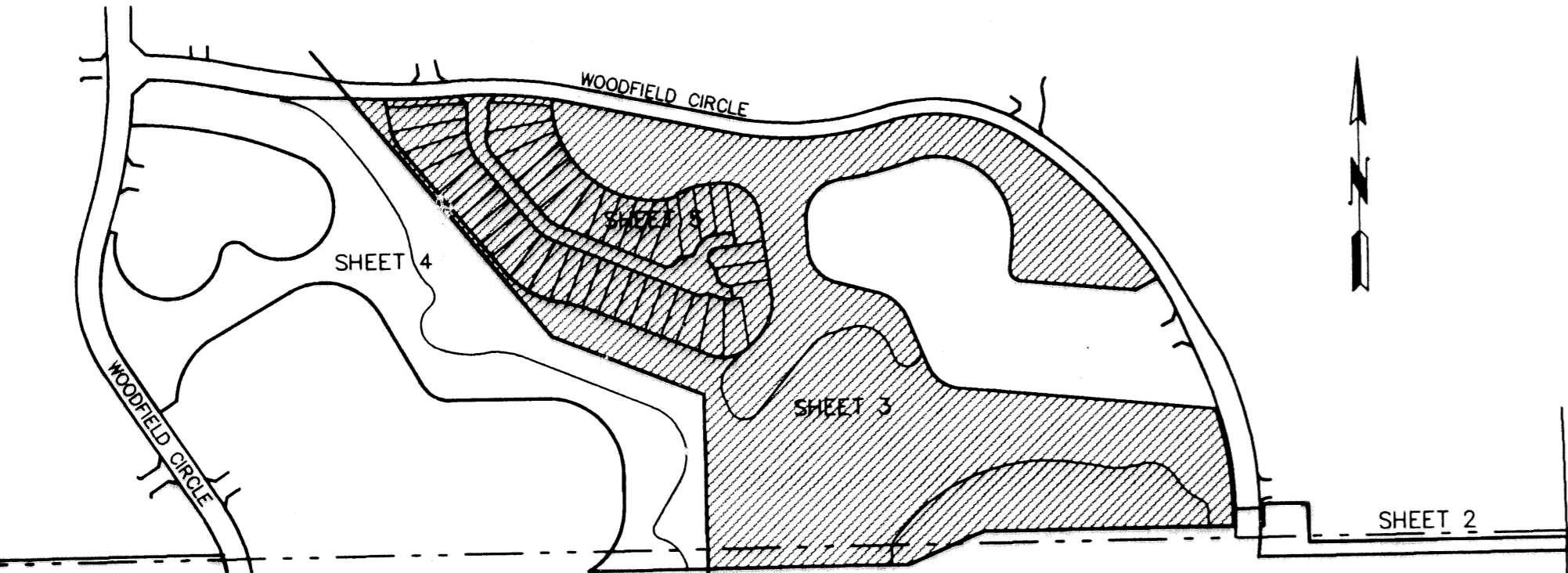


DETAIL "A"
SCALE: NONE

THE ENCLAVE AT
WOODFIELD COUNTRY CLUB
SUBDIVISION #
BOOK 76 PAGE 68
FLOOD MAP #
FLOOD ZONE
QUAD #
SE
PUD NAME City of Boca Raton
ZIP CODE

COMPUTED
DRAWN D. BACHOR
CHECKED
APPROVED
JOB NO. 93-330.6

KEY MAP
SCALE: NONE



SEE SHEET 2 FOR
PLAT INFORMATION
IN THIS AREA