

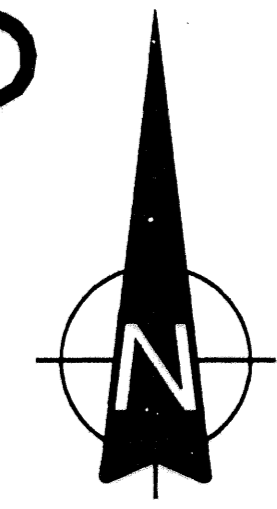
SABAL POINTE AT BALLENISLES

76

A Parcel of land lying in Section 13, Township 42 South, Range 42 East, City of Palm Beach Gardens, Palm Beach County, Florida.

Sheet 2 of 2

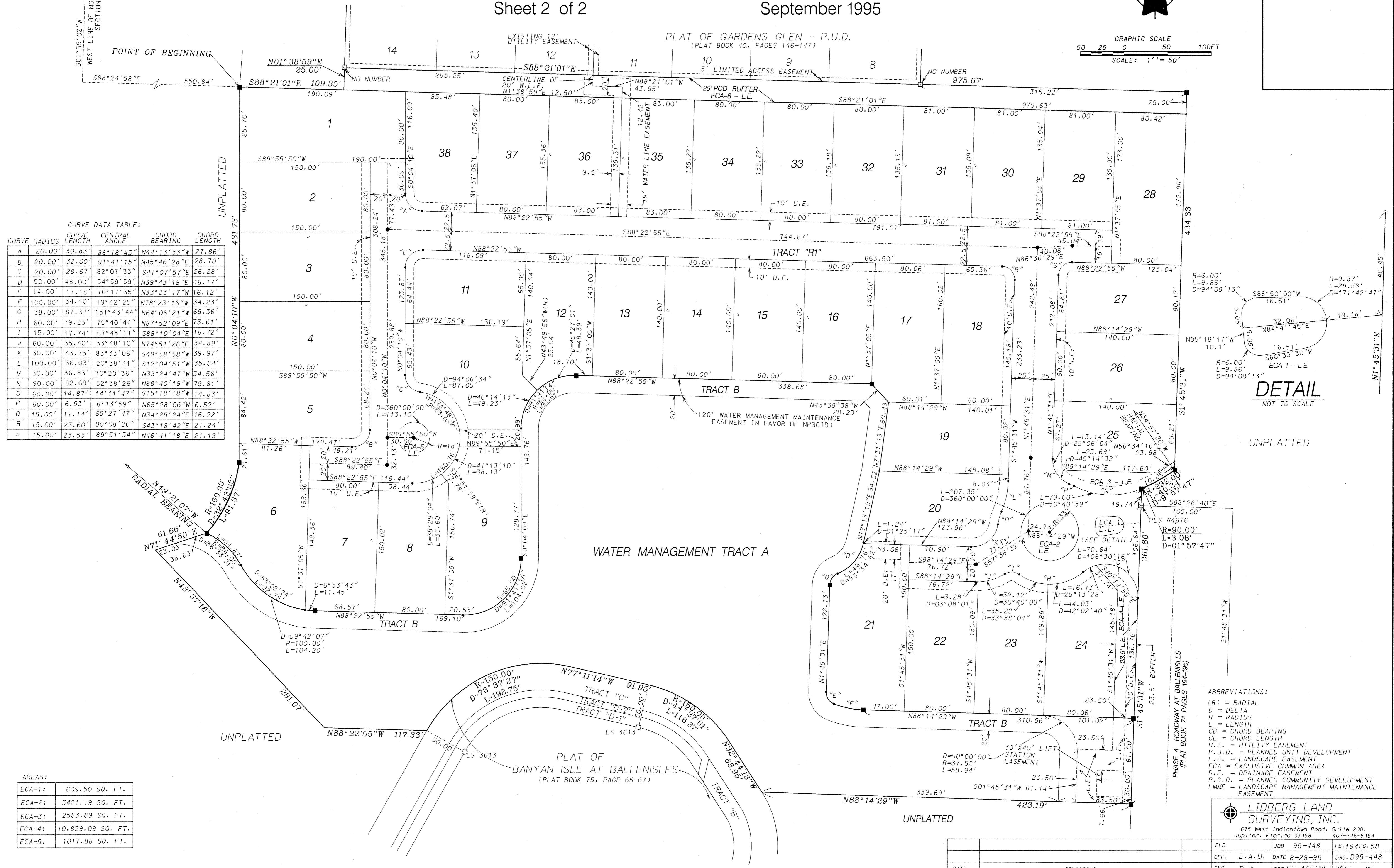
September 1995



GRAPHIC SCALE
SCALE: 1" = 50'

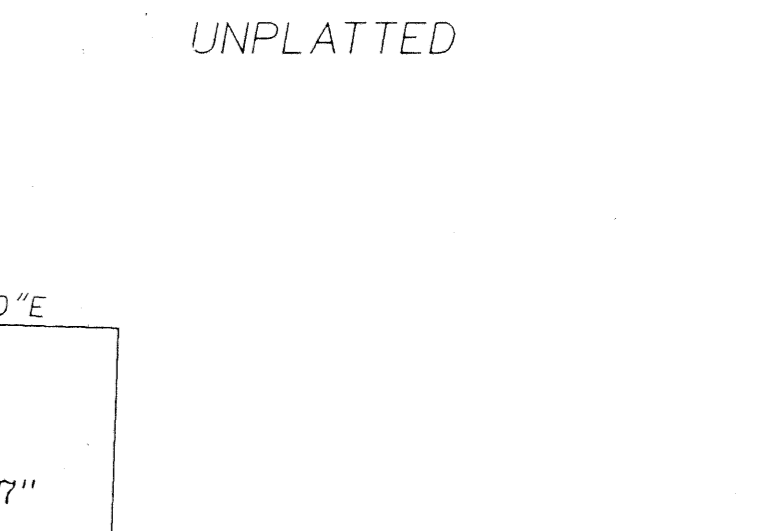
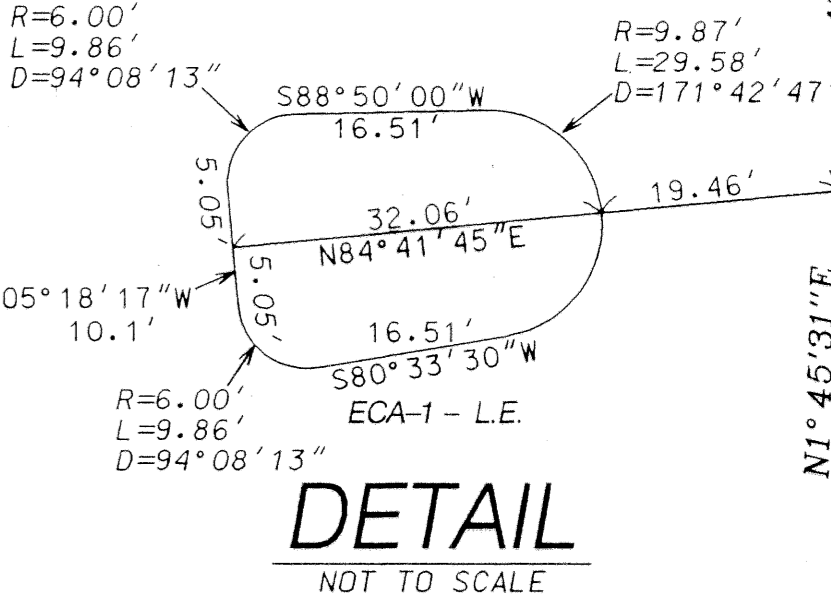
POINT OF COMMENCEMENT
NORTHWEST CORNER
SECTION 13, TOWNSHIP 42 SOUTH,
RANGE 42 EAST.

POINT OF BEGINNING
WEST LINE OF NORTHWEST 1/4,
SECTION 13.



CURVE DATA TABLE:

CURVE	RADIUS	CURVE LENGTH	CENTRAL ANGLE	CHORD BEARING	CHORD LENGTH
A	20.00'	30.83'	88°18'45"	N44°13'33"W	27.86'
B	20.00'	32.00'	91°41'15"	N45°46'28"E	28.70'
C	20.00'	28.67'	82°07'33"	S41°07'57"E	26.28'
D	50.00'	48.00'	54°59'59"	N39°43'18"E	46.17'
E	14.00'	17.18'	70°17'35"	N33°23'17"W	16.12'
F	100.00'	34.40'	19°42'25"	N78°23'16"W	34.23'
G	38.00'	87.37'	131°43'44"	N64°06'21"W	69.36'
H	60.00'	79.25'	75°40'44"	N87°52'09"E	73.61'
I	15.00'	17.74'	67°45'11"	S88°10'04"E	16.72'
J	60.00'	35.40'	33°48'10"	N74°51'26"E	34.89'
K	30.00'	43.75'	83°33'06"	S49°58'58"W	39.97'
L	100.00'	36.03'	20°38'41"	S12°04'51"W	35.84'
M	30.00'	36.83'	70°20'36"	N33°24'47"W	34.56'
N	90.00'	82.69'	52°38'26"	N88°40'19"W	79.81'
D	60.00'	14.87'	14°11'47"	S15°18'18"W	14.83'
P	60.00'	6.53'	6°13'59"	N65°28'06"W	6.52'
Q	15.00'	17.14'	65°27'47"	N34°29'24"E	16.22'
R	15.00'	23.60'	90°08'26"	S43°18'42"E	21.24'
S	15.00'	23.53'	89°51'34"	N46°41'18"E	21.19'



- ABBREVIATIONS:
- (R) = RADIAL
 - D = DELTA
 - R = RADIUS
 - L = LENGTH
 - CB = CHORD BEARING
 - CL = CHORD LENGTH
 - U.E. = UTILITY EASEMENT
 - P.U.D. = PLANNED UNIT DEVELOPMENT
 - L.E. = LANDSCAPE EASEMENT
 - ECA = EXCLUSIVE COMMON AREA
 - D.E. = DRAINAGE EASEMENT
 - P.C.D. = PLANNED COMMUNITY DEVELOPMENT
 - LMME = LANDSCAPE MANAGEMENT MAINTENANCE EASEMENT

LIDBERG LAND SURVEYING, INC.
675 West Indiantown Road, Suite 200,
Jupiter, Florida 33458 407-746-8454

FLD	JOB 95-448	FB-1946-58
OFF. E.A.O.	DATE 8-28-95	DWG. D95-448
CKD. R.W.	REF. 95-448(MS)	SHEET 2 OF 2

SUBDIVISION # SABAL POINTE AT BALLENISLES
 BOOK 76 PAGE 76
 FLOOD ZONE -
 QUAD # -
 SE -
 ZIP CODE -
 PUD NAME CITY OF PALM BEACH GARDENS

AREAS:

ECA-1:	609.50 SQ. FT.
ECA-2:	3421.19 SQ. FT.
ECA-3:	2583.89 SQ. FT.
ECA-4:	10,829.09 SQ. FT.
ECA-5:	1017.88 SQ. FT.

DATE	REVISIONS