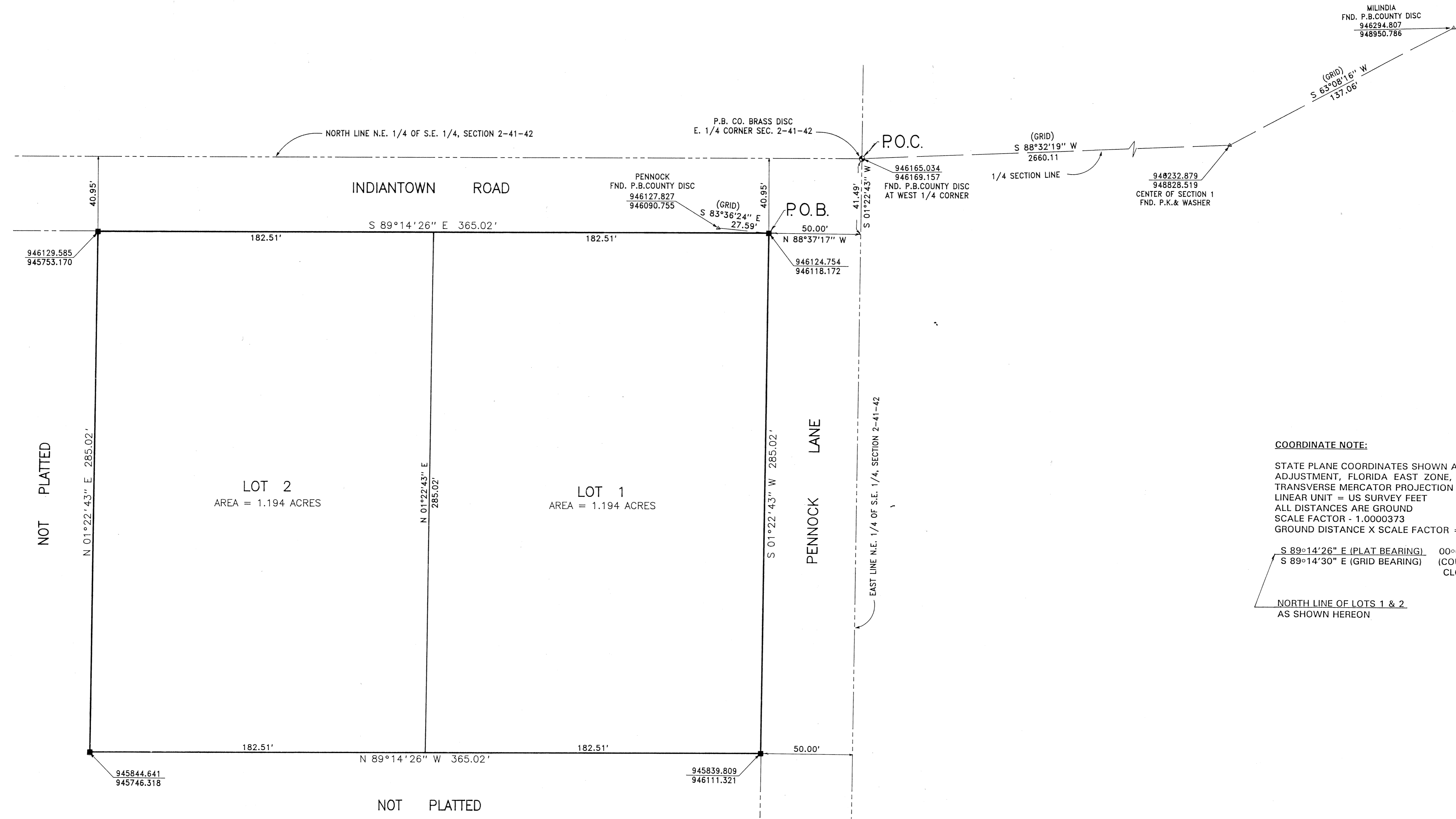


REPUBLIC SECURITY BANK

LYING IN THE N.E. 1/4 OF THE S.E. 1/4 OF SECTION 2,
TOWNSHIP 41 SOUTH, RANGE 42 EAST, PALM BEACH COUNTY
TOWN OF JUPITER, FLORIDA
SEPTEMBER 1995 SHEET 2 OF 2

99

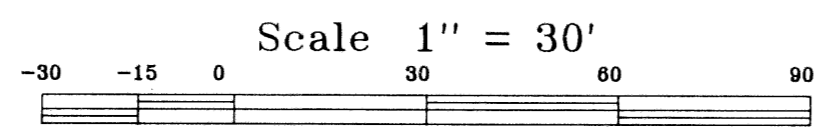
STATE OF FLORIDA
COUNTY OF PALM BEACH SS
This Plat was filed for record at _____
M. this ____ day of _____, 19____
and duly recorded in Plat Book No. _____
on Page _____
By Dorothy H. Wilken, Clerk of the Circuit Court
D.C.



COORDINATE NOTE:
STATE PLANE COORDINATES SHOWN ARE GRID DATUM, NAD 83 1990
ADJUSTMENT, FLORIDA EAST ZONE, COORDINATE SYSTEM 1983 STATE PLANE,
TRANSVERSE MERCATOR PROJECTION
LINEAR UNIT = US SURVEY FEET
ALL DISTANCES ARE GROUND
SCALE FACTOR - 1.0000373
GROUND DISTANCE X SCALE FACTOR = GRID DISTANCE

S 89°14'26" E (PLAT BEARING) 00°00'04" BEARING ROTATION
S 89°14'30" E (GRID BEARING) (COUNTER (PLAT TO GRID)
CLOCKWISE)

NORTH LINE OF LOTS 1 & 2
AS SHOWN HEREON



SUBDIVISION *REPUBLIC SECURITY BANK
BOOK 76 PAGE 99
FLOOD ZONE FLOOD MAP #
QUAD # ZONING
SE ZIP CODE
PUD NAME

RICHARD P. BREITENBACH, P.S.M.
LAND SURVEYING SERVICES
PHONE (407) 967-0065
2540 PALMARITA ROAD WEST PALM BEACH, FL. 33406

REPUBLIC SECURITY BANK