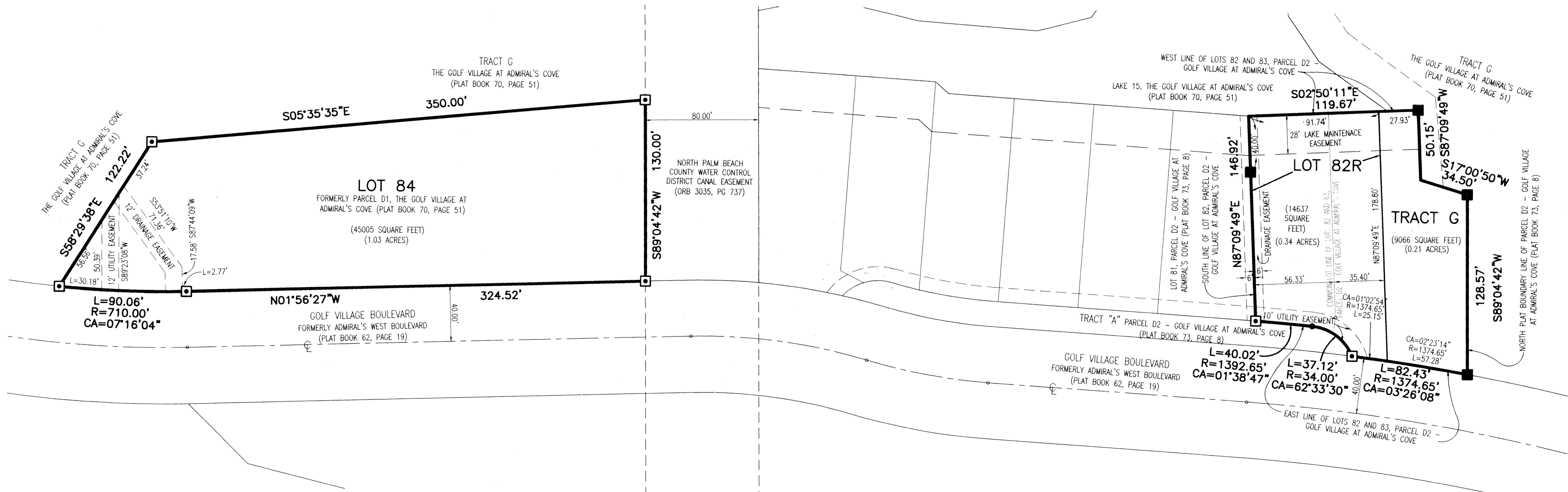
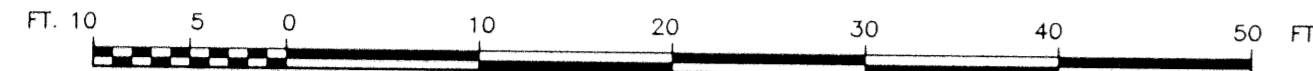
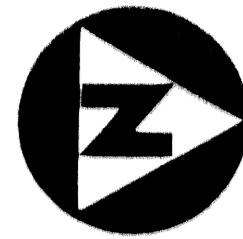


LYING IN SECTION 13, TOWNSHIP 41 SOUTH, RANGE 42 EAST, TOWN OF JUPITER, PALM BEACH COUNTY, FLORIDA AND BEING A RE-PLAT OF LOTS 82 AND 83, PARCEL D2 - GOLF VILLAGE AT ADMIRAL'S COVE, ACCORDING TO THE PLAT THEREOF, AS RECORDED IN PLAT BOOK 73, PAGE 8, PUBLIC RECORDS, PALM BEACH COUNTY, FLORIDA AND BEING A RE-PLAT OF PARCEL D1, THE GOLF VILLAGE AT ADMIRAL'S COVE, ACCORDING TO THE PLAT THEREOF, AS RECORDED IN PLAT BOOK 70, PAGE 51, PUBLIC RECORDS, PALM BEACH COUNTY, FLORIDA.



SUBDIVISION # PARCELS D1 & D2
 BOOK 74 PAGE 101
 FLOOD ZONE - FLOOD MAP #
 QUAD # - ZONING
 SE - ZIP CODE
 PUD NAME GOLF VILLAGE AT ADMIRAL'S COVE

This instrument was prepared by Wm. R. Van Campen, R.L.S., in and for the offices of Bench Mark Land Surveying & Mapping, Inc., 4152 West Blue Heron Boulevard, Suite 121, Riviera Beach, Florida

BENCH MARK
 Land Surveying and Mapping, Inc.
 4152 West Blue Heron Blvd, Suite 121, Riviera Beach, FL 33404
 Fax (407) 844-9659 Phone (407) 848-2102

RECORD PLAT
 PARCELS D1 & D2 - GOLF VILLAGE AT ADMIRAL'S COVE - PARTIAL RE-PLAT

| | | | |
|-----|----------------------|---------------|--------------|
| DWN | FB | DATE 05/26/95 | WO.# P167 |
| CKD | FILEP167, PL8202.DWG | SCALE 1"=30' | SHEET 2 OF 2 |