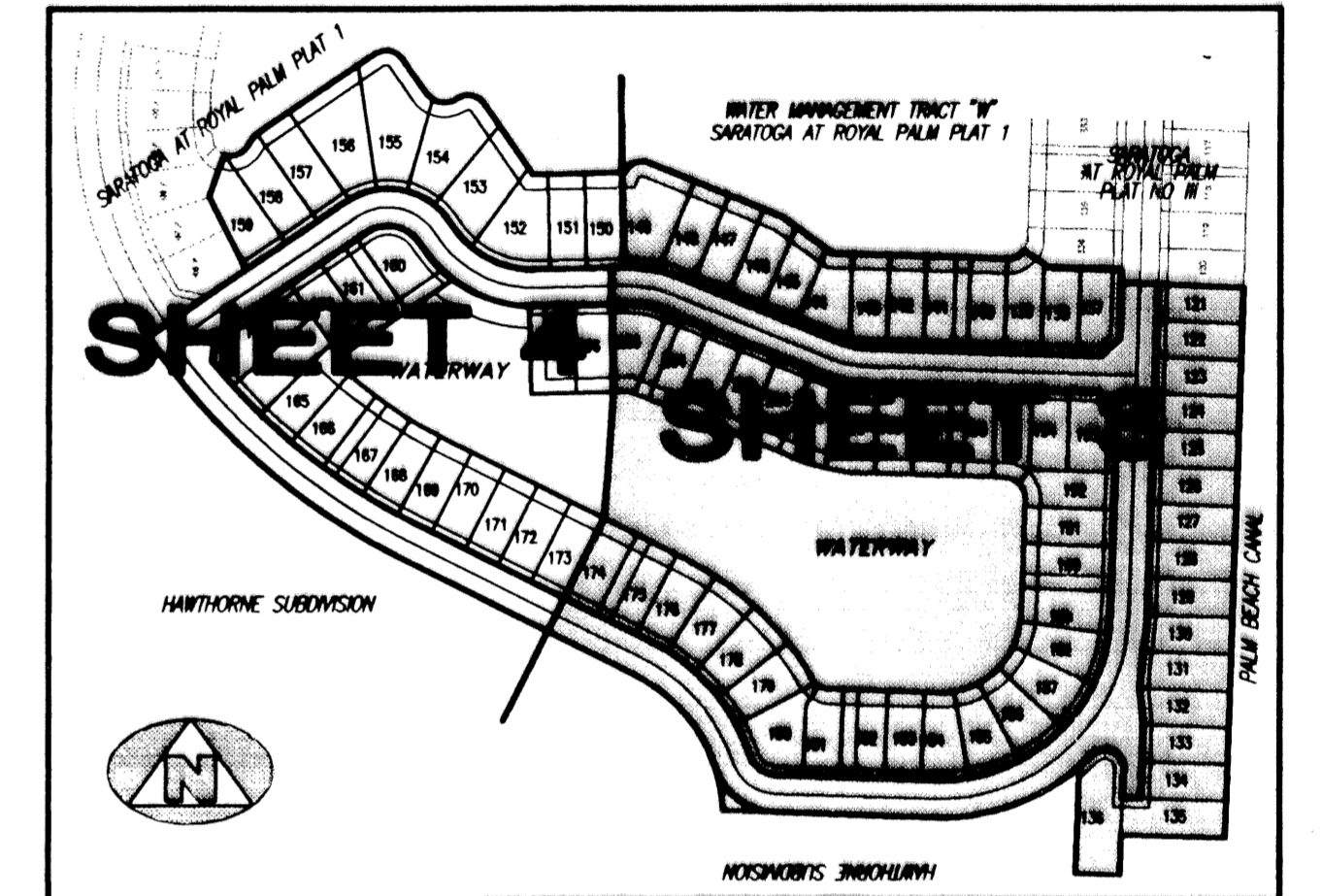
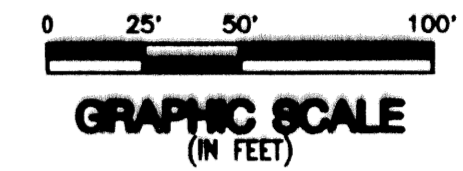
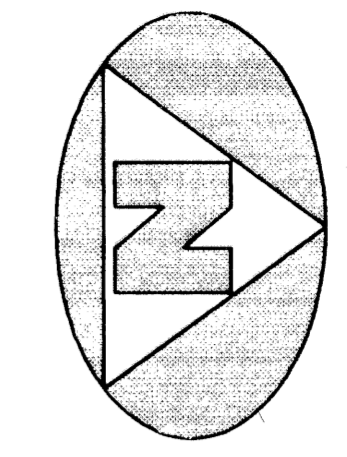


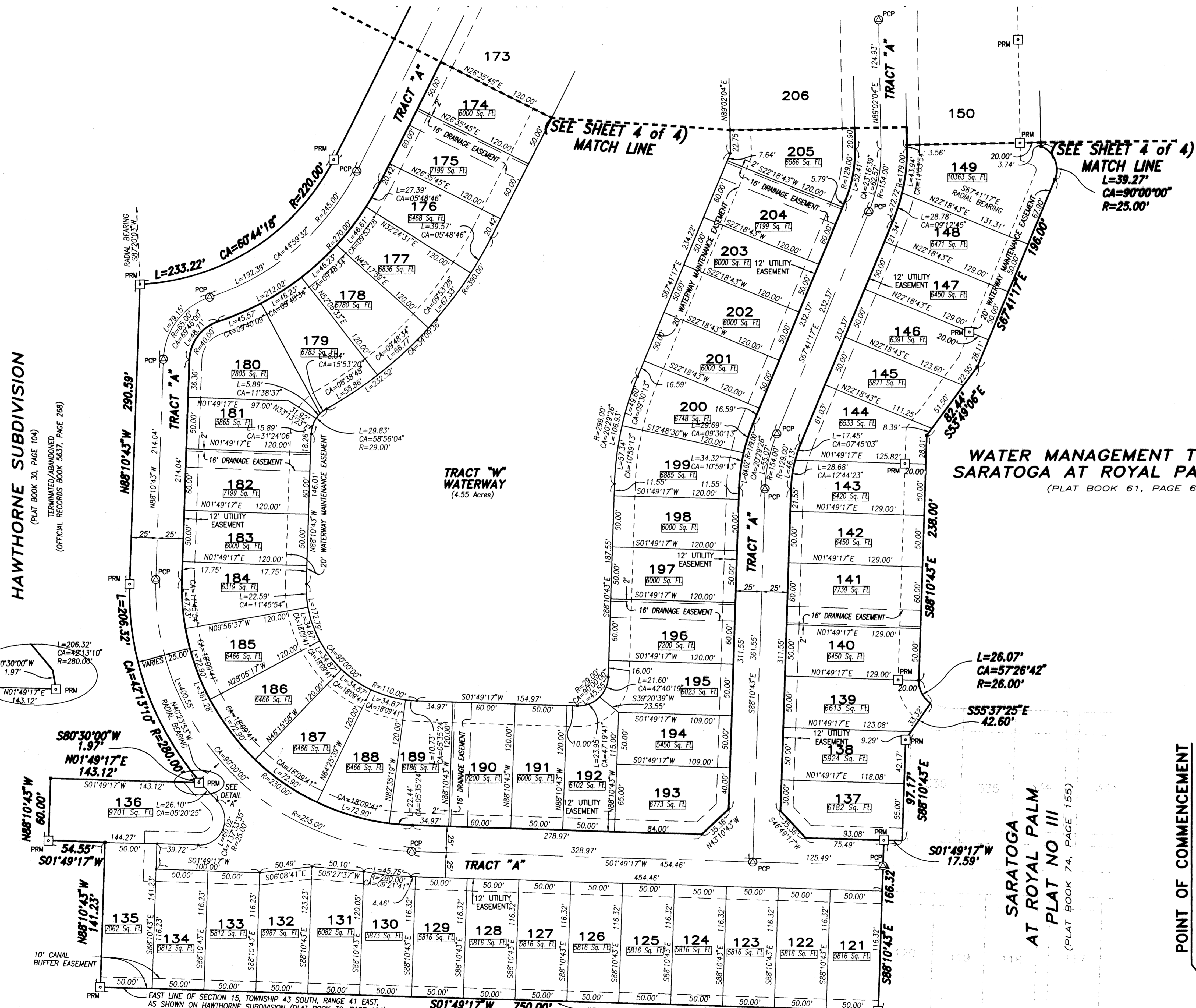
SARATOGA AT ROYAL PALM PLAT V

(A PART OF ROYAL PALM HOMES P.U.D.)
LYING AND BEING IN SECTION 15, TOWNSHIP 43 SOUTH, RANGE 41 EAST, VILLAGE OF ROYAL PALM BEACH, PALM BEACH COUNTY, FLORIDA,
BEING A RE-PLAT OF A PORTION OF HAWTHORNE SUBDIVISION, AS RECORDED IN PLAT BOOK 30, PAGE 104, PUBLIC RECORDS, PALM BEACH COUNTY, FLORIDA



KEY MAP

HAWTHORNE SUBDIVISION
(PLAT BOOK 30, PAGE 104)
TERMINATED/ABANDONED
(OFFICIAL RECORDS BOOK 3607, PAGE 268)



WATER MANAGEMENT TRACT "W"
SARATOGA AT ROYAL PALM PLAT 1
(PLAT BOOK 61, PAGE 67)

SURVEYOR'S NOTES AND LEGEND:

1. BEARINGS SHOWN OR STATED HEREON, ARE BASED ON, OR ARE RELATIVE TO AN ASSUMED BEARING OF SOUTH 02°25'19" WEST ALONG THE WEST LINE OF "HAWTHORNE SUBDIVISION", PLAT BOOK 30, PAGE 104.
2. IN THOSE INSTANCES WHERE UTILITY/DRAINAGE STRUCTURES ARE CONSTRUCTED IN CONFLICT WITH THE PLATTED PERMANENT CONTROL POINTS (P.C.P.) POSITION, STRADDLERS MONUMENTED AS PERMANENT CONTROL POINTS WILL BE SET TO REFERENCE THE PLATTED P.C.P. POSITION.
3. LINES INTERSECTING CURVES ARE NON RADIAL UNLESS OTHERWISE NOTED.
4. SQ. FT. DENOTES SQUARE FEET
5. C/L DENOTES A CENTERLINE
6. W.M.E. DENOTES WATERWAY MAINTENANCE EASEMENT
7. DENOTES A SET #2424 PERMANENT REFERENCE MONUMENT (P.R.M.)
8. DENOTES A SET #2424 PERMANENT CONTROL POINT (P.C.P.)

POINT OF COMMENCEMENT

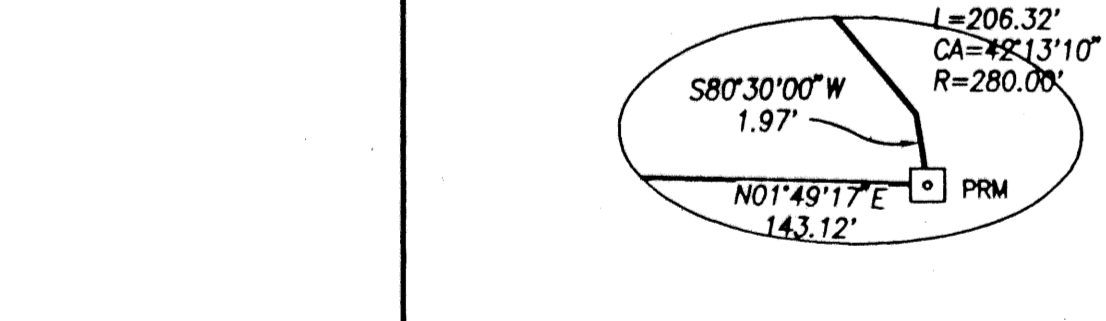
NORTHEAST CORNER OF THE SOUTHEAST ONE-QUARTER OF SECTION 15, TOWNSHIP 43 SOUTH, RANGE 41 EAST AS PER HAWTHORNE SUBDIVISION
FOUND PALM BEACH COUNTY ENGINEERING DEPARTMENT
BRASS DISK IN CONCRETE (1/4 CORNER) (3.76'S, 1.19'E)
FOUND #2125 4"x4" CONCRETE MONUMENT (3.62'S, 1.09'W)

This instrument was prepared by Wm. R. Van Campen, R.L.S., in and for the offices of Bench Mark Land Surveying & Mapping, Inc., 4152 West Blue Heron Boulevard, Suite 121, Riviera Beach, Florida

BENCH MARK
Land Surveying and Mapping, Inc.
4152 West Blue Heron Blvd., Suite 121, Riviera Beach, FL 33404
Fax (407) 844-9659 Phone (407) 848-2102

RECORD PLAT		SARATOGA AT ROYAL PALM PLAT V	
DWN	DJM	FB	DATE 12/01/95
CKD	FILE P15-V-A.dwg	SCALE 1" = 50'	WO.# P15
			SHEET 3 OF 4

SARATOGA AT ROYAL PALM PLAT V
BOOK 76 PAGE 113
FLOOD ZONE
ZONING
ROAD #
ZIP CODE
PUD NAME Royal Palm Homes



10' CANAL BUFFER EASEMENT

PALM BEACH CANAL
A.K.A. C.P.B. 20 CANAL
A.K.A. M1 CANAL

POINT OF BEGINNING

SARATOGA AT ROYAL PALM PLAT NO III
(PLAT BOOK 74, PAGE 155)

POINT OF COMMENCEMENT