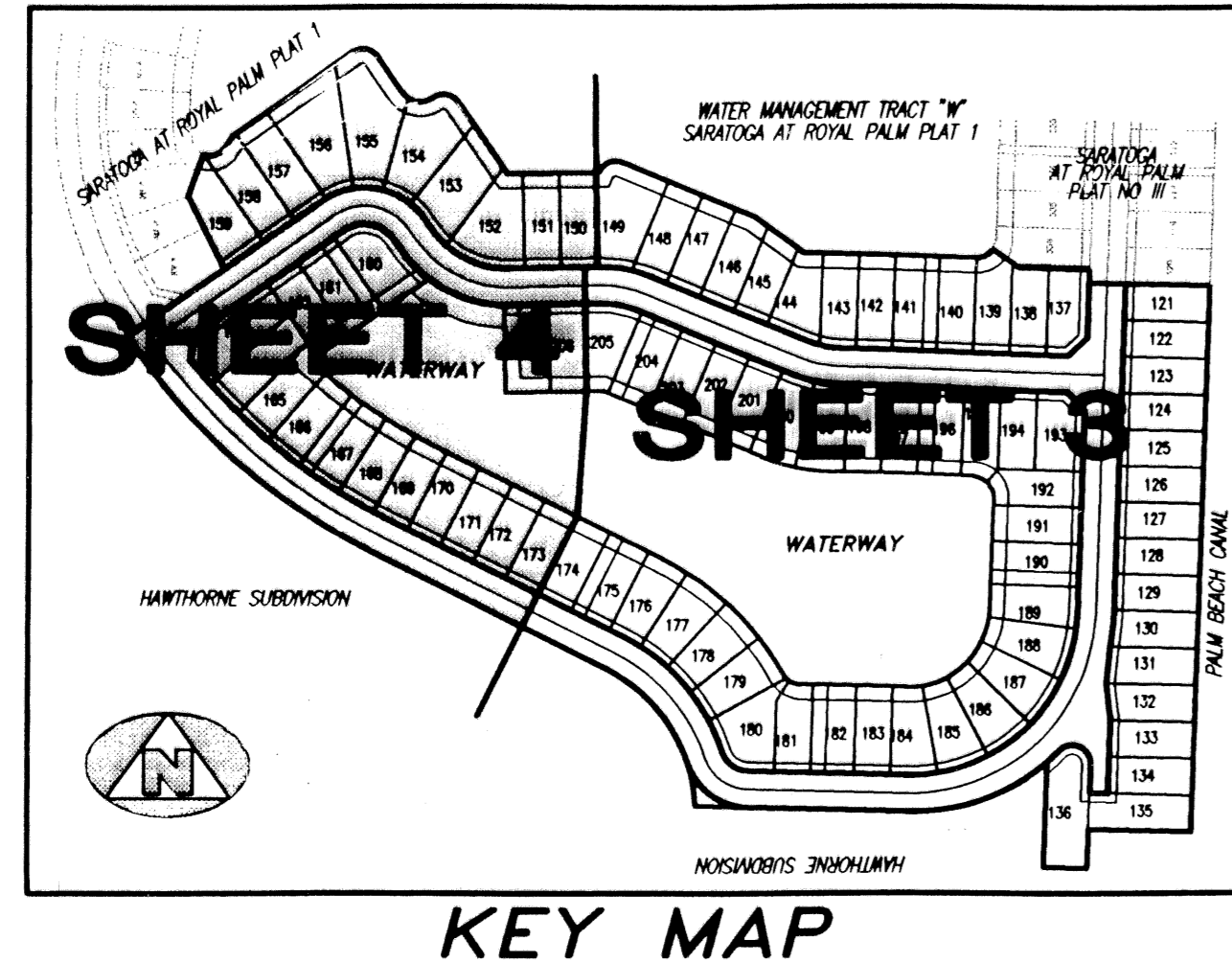
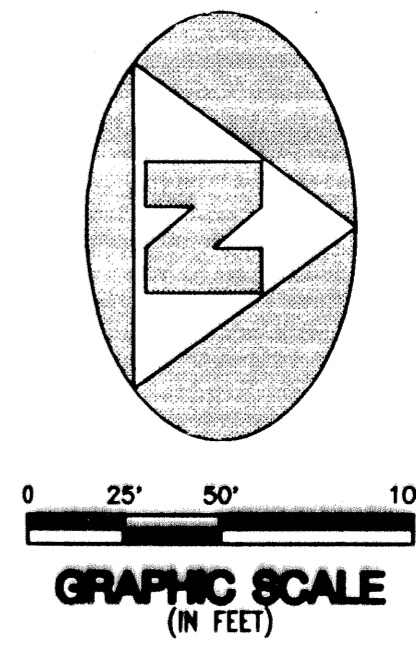


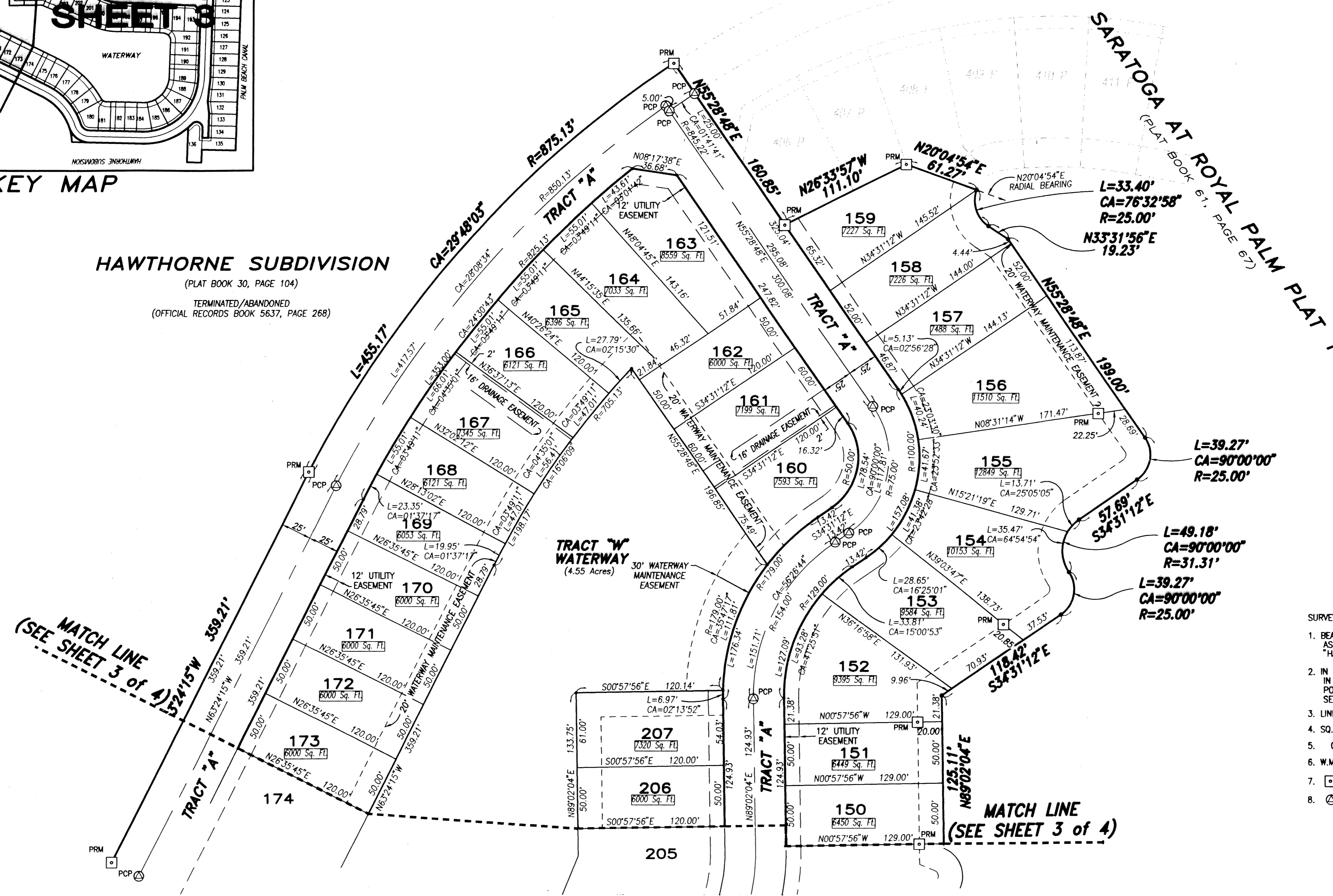
SARATOGA AT ROYAL PALM PLAT V

(A PART OF ROYAL PALM HOMES P.U.D.)
LYING AND BEING IN SECTION 15, TOWNSHIP 43 SOUTH, RANGE 41 EAST, VILLAGE OF ROYAL PALM BEACH, PALM BEACH COUNTY, FLORIDA,
BEING A RE-PLAT OF A PORTION OF HAWTHORNE SUBDIVISION, AS RECORDED IN PLAT BOOK 30, PAGE 104, PUBLIC RECORDS, PALM BEACH COUNTY, FLORIDA



KEY MAP

HAWTHORNE SUBDIVISION
(PLAT BOOK 30, PAGE 104)
TERMINATED/ABANDONED
(OFFICIAL RECORDS BOOK 5637, PAGE 268)



- SURVEYOR'S NOTES AND LEGEND:
- BEARINGS SHOWN OR STATED HEREON, ARE BASED ON, OR ARE RELATIVE TO AN ASSUMED BEARING OF SOUTH 02°25'19" WEST ALONG THE WEST LINE OF HAWTHORNE SUBDIVISION, PLAT BOOK 30, PAGE 104.
 - IN THOSE INSTANCES WHERE UTILITY/DRAINAGE STRUCTURES ARE CONSTRUCTED IN CONFLICT WITH THE PLATTED PERMANENT CONTROL POINTS (P.C.P.) POSITION, STRADDLERS MONUMENTED AS PERMANENT CONTROL POINTS WILL BE SET TO REFERENCE THE PLATTED P.C.P. POSITION.
 - LINES INTERSECTING CURVES ARE NON RADIAL UNLESS OTHERWISE NOTED.
 - SQ. FT. DENOTES SQUARE FEET
 - C/L DENOTES A CENTERLINE
 - W.M.E. DENOTES WATERWAY MAINTENANCE EASEMENT
 - PRM DENOTES A SET #2424 PERMANENT REFERENCE MONUMENT (P.R.M.)
 - PCP DENOTES A SET #2424 PERMANENT CONTROL POINT (P.C.P.)

SUBDIVISION # SARATOGA AT ROYAL PALM PLAT V
BOOK 74 PAGE 114
FLOOD MAP *
ROAD #
ZONING
SE
ZIP CODE
PUD NAME Royal Palm Homes

This instrument was prepared by Wm. R. Van Campen, R.L.S., in and for the offices of Bench Mark Land Surveying & Mapping, Inc., 4152 West Blue Heron Boulevard, Suite 121, Riviera Beach, Florida

BENCH MARK
Land Surveying and Mapping, Inc.
4152 West Blue Heron Blvd., Suite 121, Riviera Beach, FL 33404
Fax (407) 844-9659 Phone (407) 848-2102

RECORD PLAT			
SARATOGA AT ROYAL PALM PLAT V			
DWN	D/M	FB	DATE 12/01/95
CKD	FILE P15-V-Adv	SCALE 1" = 50'	WO.# P15
			SHEET 4 OF 4