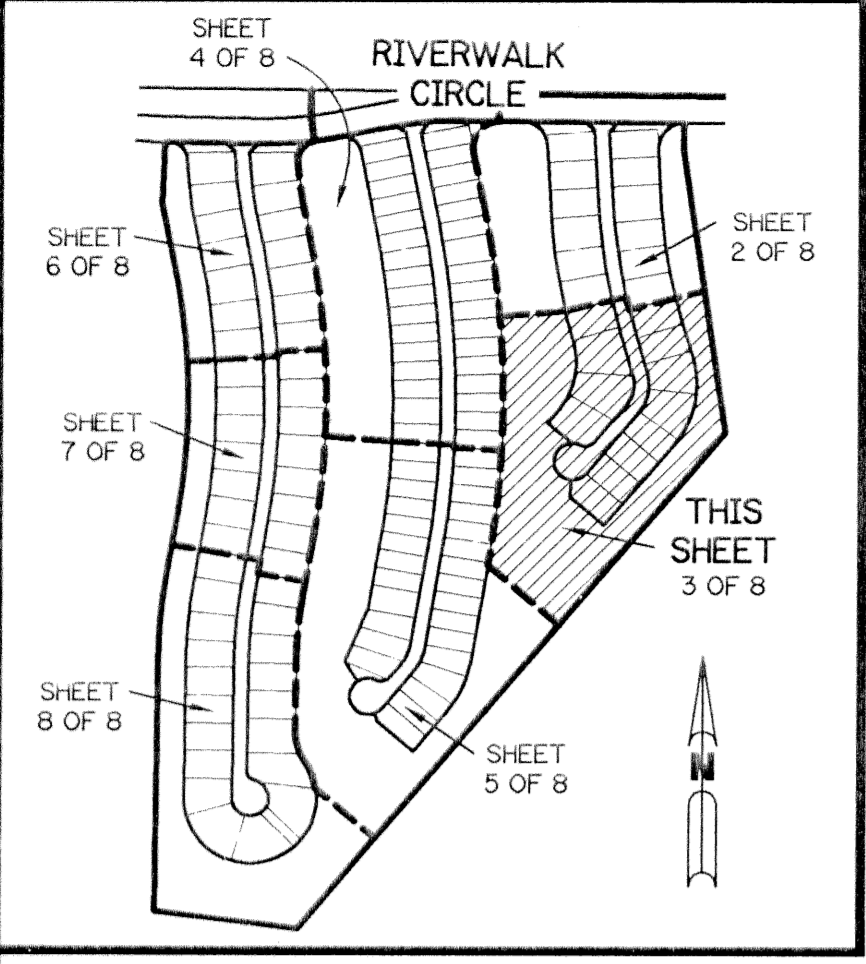


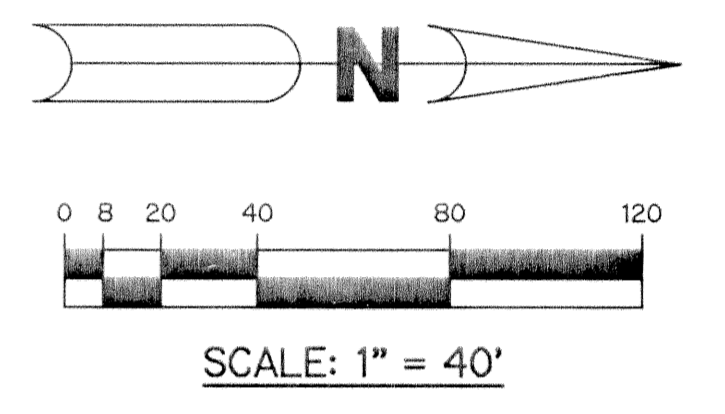
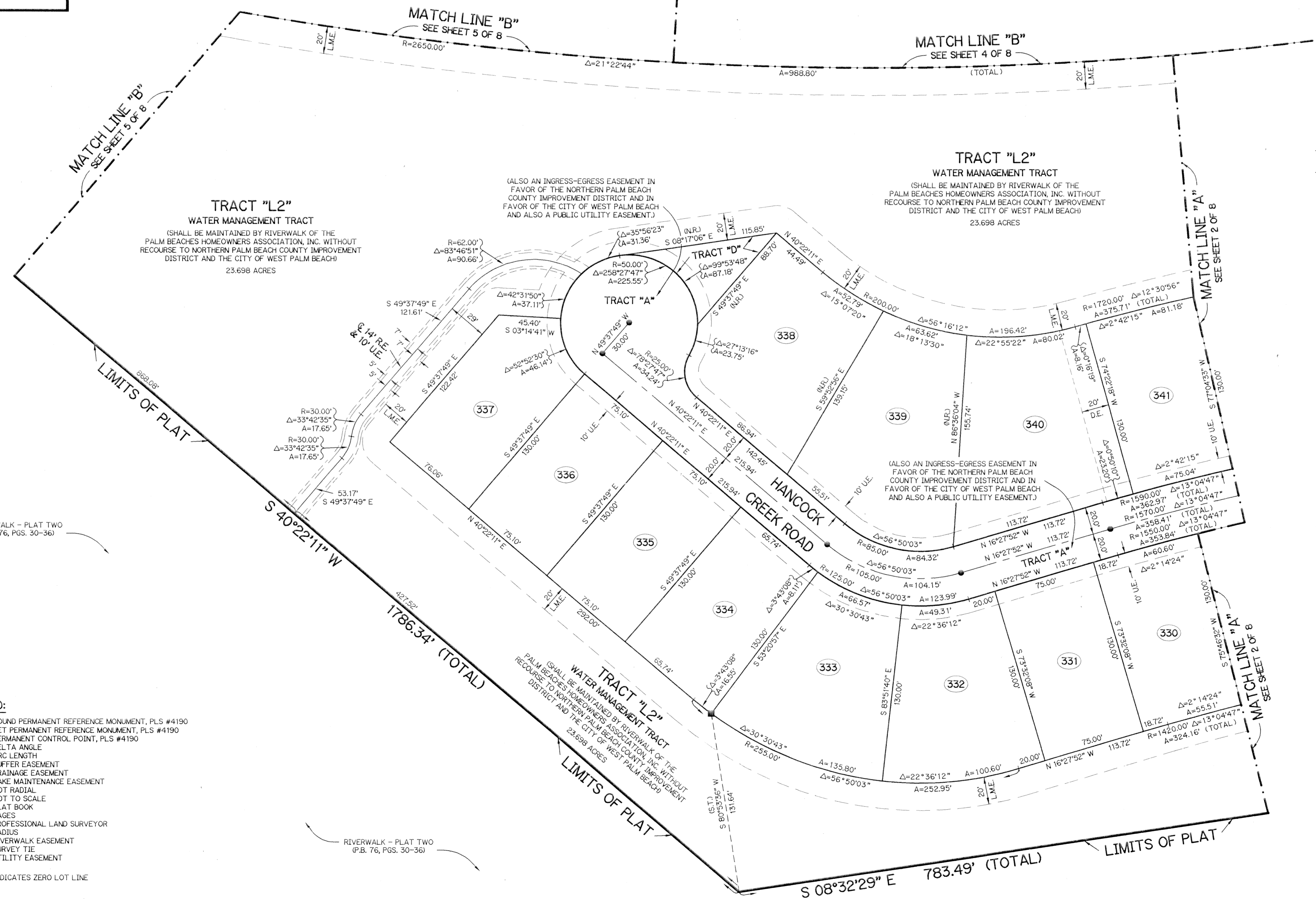
RIVERWALK - PLAT THREE

A PARCEL OF LAND LYING IN
SECTION 21, TOWNSHIP 43 SOUTH, RANGE 42 EAST,
CITY OF WEST PALM BEACH, PALM BEACH COUNTY, FLORIDA.

SHEET 3 OF 8 DECEMBER, 1995



KEY MAP
N.T.S.



- LEGEND:**
- - FOUND PERMANENT REFERENCE MONUMENT, PLS #4190
 - - SET PERMANENT REFERENCE MONUMENT, PLS #4190
 - - PERMANENT CONTROL POINT, PLS #4190
 - Δ - DELTA ANGLE
 - A - ARC LENGTH
 - B.E. - BUFFER EASEMENT
 - D.E. - DRAINAGE EASEMENT
 - L.M.E. - LAKE MAINTENANCE EASEMENT
 - N.R. - NOT RADIAL
 - N.T.S. - NOT TO SCALE
 - P.B. - PLAT BOOK
 - P.G.S. - PAGES
 - P.L.S. - PROFESSIONAL LAND SURVEYOR
 - R - RADIUS
 - R.E. - RIVERWALK EASEMENT
 - S.T. - SURVEY TIE
 - U.E. - UTILITY EASEMENT
 - ◁ - INDICATES ZERO LOT LINE

THIS INSTRUMENT PREPARED BY
WILBUR F. DIVINE P.S.M. 4190 STATE OF FLORIDA
LAWSON, NOBLE AND WEBB, INC.
ENGINEERS, PLANNERS SURVEYORS
WEST PALM BEACH, FLORIDA

SUBDIVISION * RIVERWALK
BOOK 76 PAGE 117
FLOOD ZONE -
QUAD * ZONING
SE - ZIP CODE
PUD NAME -