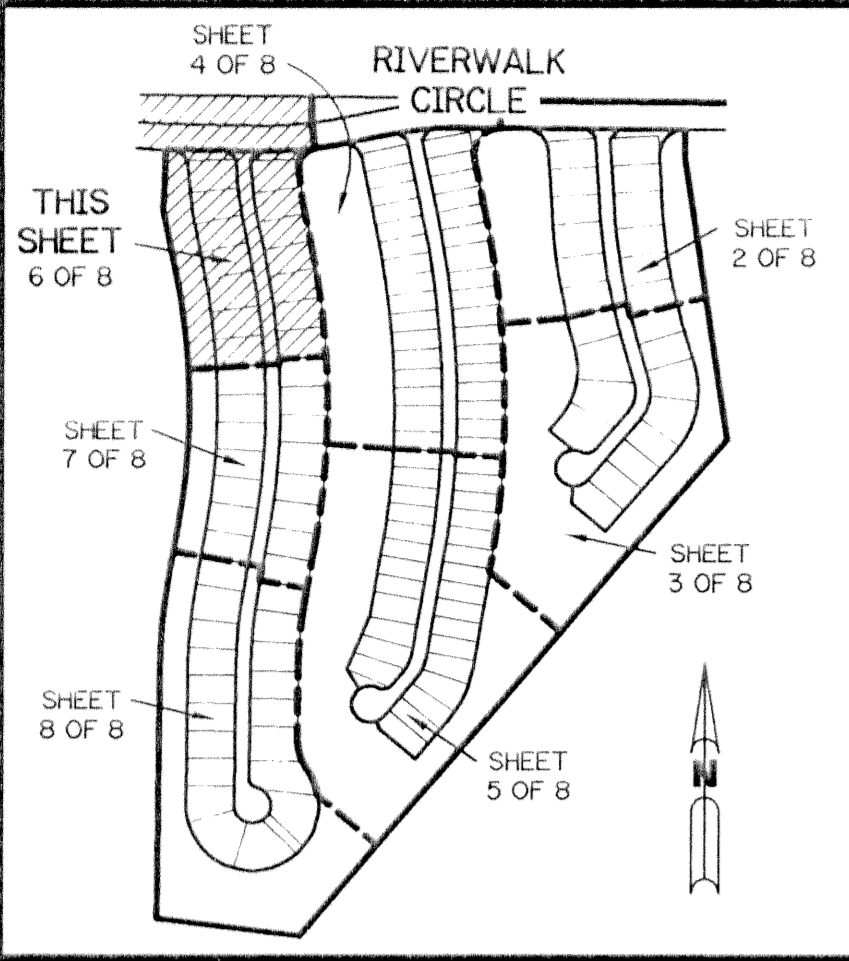


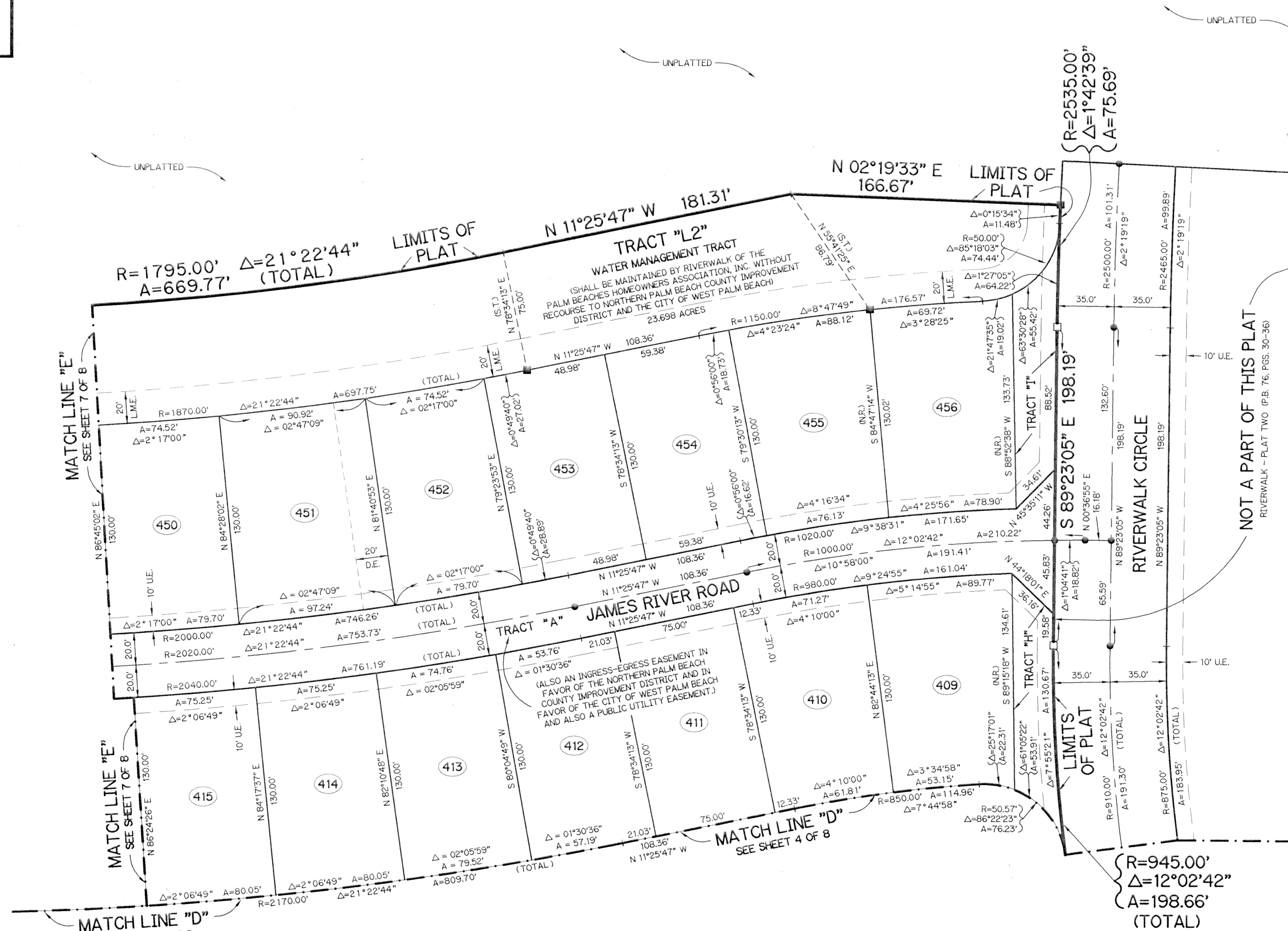
RIVERWALK - PLAT THREE

A PARCEL OF LAND LYING IN
SECTION 21, TOWNSHIP 43 SOUTH, RANGE 42 EAST,
CITY OF WEST PALM BEACH, PALM BEACH COUNTY, FLORIDA.

SHEET 6 OF 8 DECEMBER, 1995



KEY MAP
N.T.S.



LEGEND:

- - FOUND PERMANENT REFERENCE MONUMENT, PLS #4190
- - SET PERMANENT REFERENCE MONUMENT, PLS #4190
- ▲ - PERMANENT CONTROL POINT, PLS #4190
- Δ - DELTA ANGLE
- A - ARC LENGTH
- B.E. - BUFFER EASEMENT
- D.E. - DRAINAGE EASEMENT
- L.M.E. - LAKE MAINTENANCE EASEMENT
- N.R. - NOT RADIAL
- N.T.S. - NOT TO SCALE
- P.B. - PLAT BOOK
- PGS. - PAGES
- P.L.S. - PROFESSIONAL LAND SURVEYOR
- R - RADIUS
- R.E. - RIVERWALK EASEMENT
- S.T. - SURVEY TIE
- U.E. - UTILITY EASEMENT
- △ - INDICATES ZERO LOT LINE

THIS INSTRUMENT PREPARED BY
WILBUR F. DIVINE, P.S.M. 4190, STATE OF FLORIDA
LAWSON, NOBLE AND WEBB, INC.
ENGINEERS, PLANNERS, SURVEYORS
WEST PALM BEACH, FLORIDA

SUBDIVISION # RIVERWALK
BOOK 76
PAGE 120
FLOOD ZONE
FLOOD MAP #
QUAD #
SE
ZONING
ZIP CODE
PUD NAME