

**SMITH DAIRY WEST P.U.D.-PLAT No. 1**  
 BEING A REPLAT OF PART OF BLOCK 38 OF PALM BEACH FARMS  
 COMPANY PLAT No. 3, AS RECORDED IN PLAT BOOK 2, PAGES  
 45 THROUGH 54 OF THE PUBLIC RECORDS OF PALM BEACH COUNTY, FLORIDA  
 IN PART OF SECTIONS 4 AND 5, TOWNSHIP 45 SOUTH, RANGE 42 EAST,  
 PALM BEACH COUNTY, FLORIDA  
 SHEET 2 OF 8 SHEETS  
 JUNE 1995

*PET. 94-77  
 ESCROW AGREEMENT  
 PARKS, SCHOOLS (SEE LOT LIST)  
 + ROADS (50 LOTS)  
 5/2/2/I*

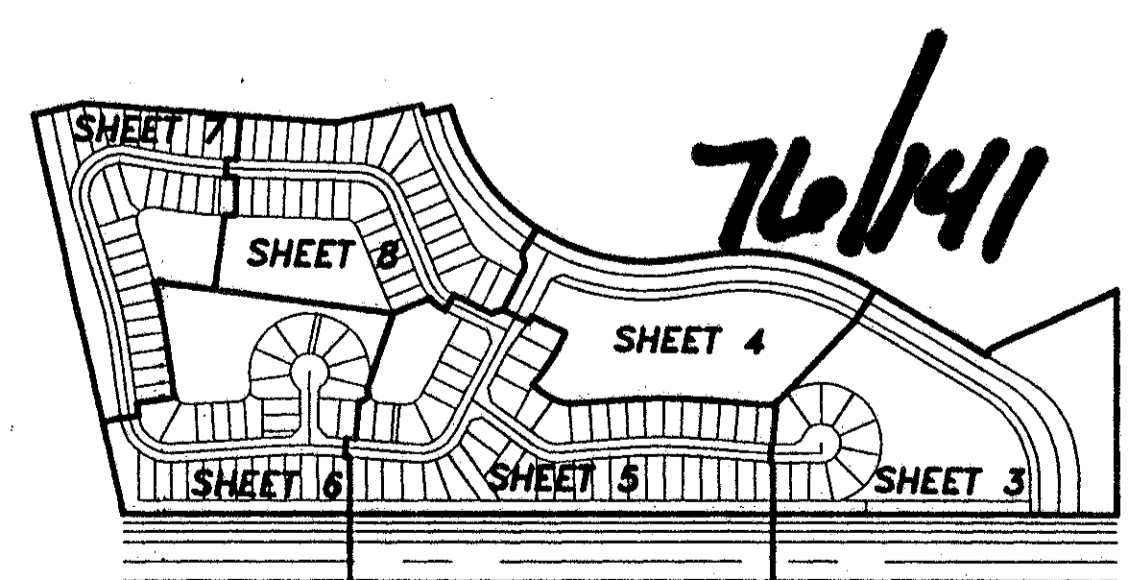
**LAND USE** (ZONING PETITION No. PDD 94-77)

|                              |                  |
|------------------------------|------------------|
| SMITH FARM BOULEVARD         | 4.45 Ac.         |
| ROCKPORT CIRCLE              | 4.29 Ac.         |
| SALLY LYN LANE               | 1.11 Ac.         |
| DAWN TREE COURT              | 0.16 Ac.         |
| WATER MANAGEMENT TRACT No. 1 | 10.65 Ac.        |
| WATER MANAGEMENT TRACT No. 2 | 8.64 Ac.         |
| TRACT B-1                    | 0.25 Ac.         |
| TRACT B-2                    | 0.25 Ac.         |
| TRACT B-3                    | 0.94 Ac.         |
| TRACT B-4                    | 0.52 Ac.         |
| TRACT B-4                    | 1.89 Ac.         |
| TRACT OS-1                   | 0.42 Ac.         |
| TRACT OS-2                   | 2.47 Ac.         |
| TRACT OS-3                   | 0.57 Ac.         |
| TRACT OS-4                   | 0.04 Ac.         |
| TRACT OS-5                   | 0.04 Ac.         |
| TRACT OS-6                   | 0.04 Ac.         |
| TRACT OS-7                   | 0.06 Ac.         |
| TRACT R-1                    | 0.04 Ac.         |
| LOTS                         | 1.24 Ac.         |
|                              | <u>17.44 Ac.</u> |
| TOTAL                        | 55.22 Ac.        |

NUMBER OF UNITS = 154  
 TYPE USE = ZERO LOT LINE

T&Z-438

SUBDIVISION *SMITH DAIRY WEST*  
 BOOK 76 PAGE 141  
 FLOOD MAP #1711A  
 ZONING PUD  
 ZIP CODE 33467  
 SUB NAME



0653-001

|   |   |                                 |
|---|---|---------------------------------|
| SCALE:  | <b>NICK MILLER, INC.</b><br>Surveying<br>Planning & Development | DRAWN BY:                       |
| DATE: JUNE 1995   |   | CHK:                            |
| <b>SMITH DAIRY WEST P.U.D.-PLAT No.1</b>  |   |                                 |
| 2580 RCA Blvd. • Suite 105<br>Palm Beach Gardens, Florida 33410<br>(407) 627-5200 |   | DRAWING NUMBER<br><b>940148</b> |