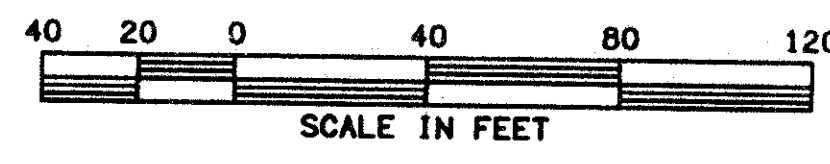


**SMITH DAIRY WEST P.U.D.-PLAT No. 1**  
 BEING A REPLAT OF PART OF BLOCK 38 OF PALM BEACH FARMS  
 COMPANY PLAT No. 3, AS RECORDED IN PLAT BOOK 2, PAGES  
 45 THROUGH 54 OF THE PUBLIC RECORDS OF PALM BEACH COUNTY, FLORIDA  
 IN PART OF SECTIONS 4 AND 5, TOWNSHIP 45 SOUTH, RANGE 42 EAST,  
 PALM BEACH COUNTY, FLORIDA  
**SHEET 3 OF 8 SHEETS**

JUNE 1995

**142**



N 89° 07' 19" E (c) 0653-001

N: 815402.91  
E: 929633.72

N 00° 52' 41" W (c)  
28.38(c)

N: 815394.81  
E: 928963.09

N 01° 00' 50" W (c)  
56.28 (c)

N 01° 00' 50" W (c)  
59.84 (c)

PALM BEACH FARMS Co. PLAT No. 3  
TRACT 122, BLOCK 38  
PER PLAT BOOK 2, PAGES 45-54

PALM BEACH FARMS Co. PLAT No. 3  
TRACT 120, BLOCK 38  
PER PLAT BOOK 2, PAGES 45-54

PALM BEACH FARMS Co. PLAT No. 3  
TRACT 121, BLOCK 38  
PER PLAT BOOK 2, PAGES 45-54

- LEGEND:**
- PERMANENT REFERENCE MONUMENT "P. L. S. 4828"
  - PERMANENT CONTROL POINT "P. C. P. 4828"
  - R RADIUS
  - A ARC LENGTH
  - Δ DELTA (CENTRAL ANGLE)
  - P.V. POINT OF CURVATURE
  - P.T. POINT OF TANGENCY
  - P.S.M. PROFESSIONAL SURVEYOR & MAPPER
  - P.L.S. PROFESSIONAL LAND SURVEYOR
  - U.E. UTILITY EASEMENT
  - D.E. DRAINAGE EASEMENT
  - L.M.E. LAKE MAINTENANCE EASEMENT
  - N. NORTHING (GRID)
  - E. EASTING (GRID)
  - (c) CALCULATED
  - (R) RADIAL
  - M.R.E. MAINTENANCE AND ROOF EAVE EASEMENT
  - L.A.E. LIMITED ACCESS EASEMENT

BLOCK 38, PALMBEACH FARMS Co. PLAT No. 3  
PER PLAT BOOK 2, PAGES 45-54

S 00° 52' 41" E 629.45  
LIMITS OF PLAT

S 00° 52' 41" E 629.45  
LIMITS OF PLAT

N: 814773.52  
E: 929643.36

N 89° 07' 19" E (c)  
277.40 (c)

*PET. 94-77  
ESCROW AGRMT  
PARKS, SCHOOLS &  
ROADS (SEE LOT LIST)  
5/2/2 1/2*

**0653-001**  
**76/42**

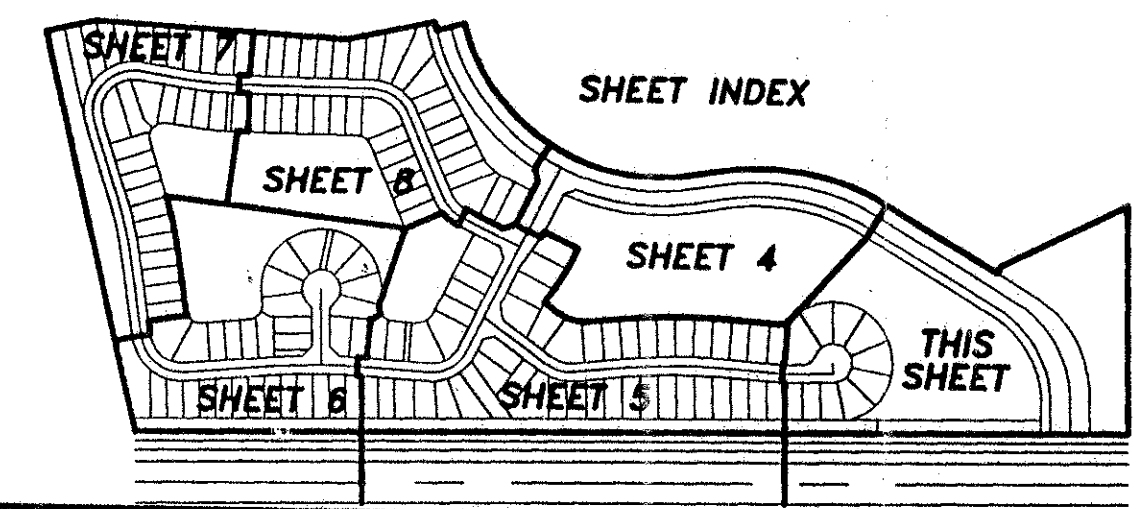
PALM BEACH COUNTY  
SURVEY DEPARTMENT  
BRASS DISK IN CONCRETE  
"PBF 48"  
N: 814649.44  
E: 930777.88

**NICK MILLER, INC.**  
Surveying  
Planning & Development

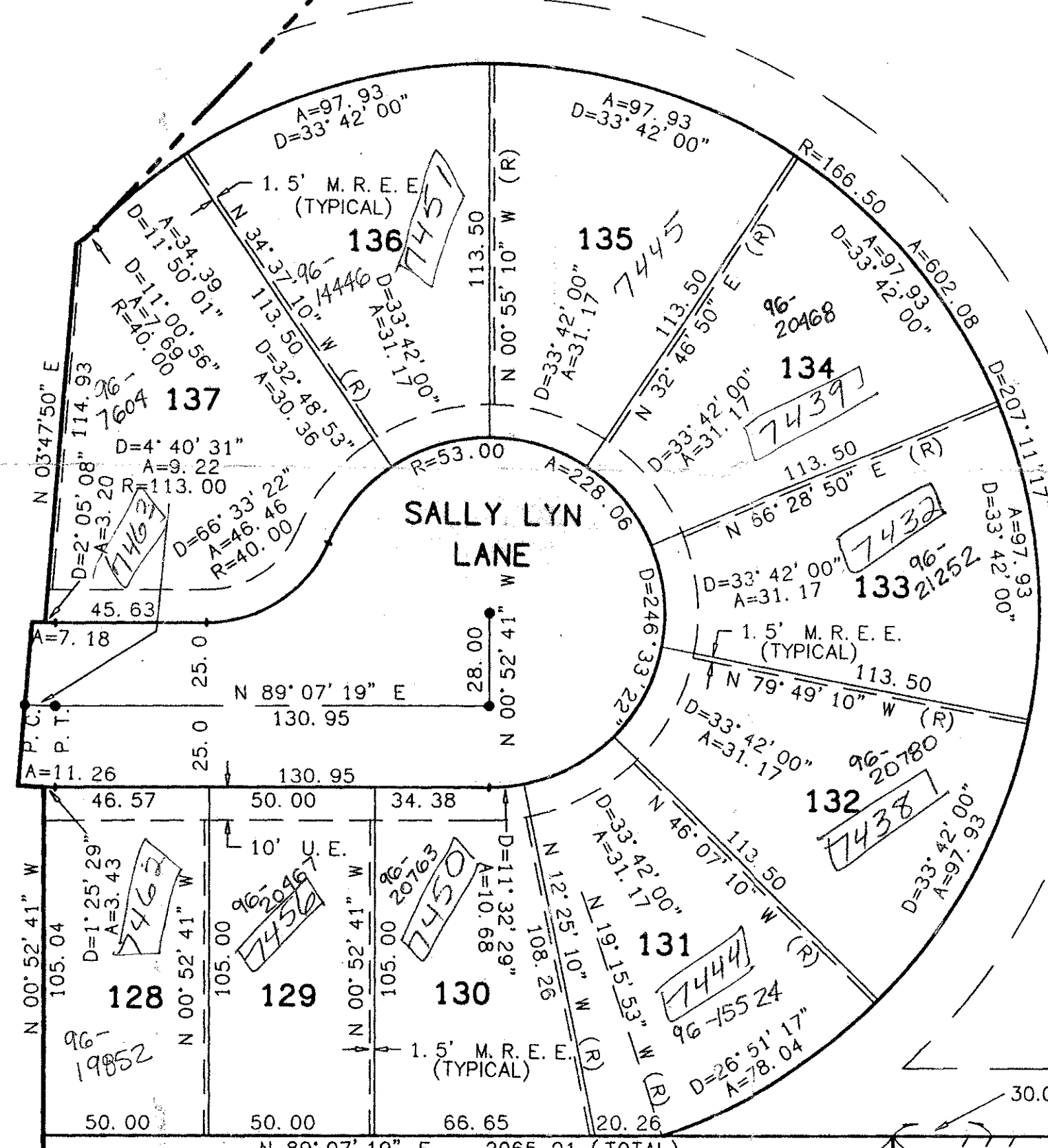
SCALE: 1" = 40'  
DATE: JUNE 1995  
DRAWN BY:  
CHK:

**SMITH DAIRY WEST P.U.D.-PLAT No.1**

Palm Beach Gardens, Florida 33410  
(407) 627-5200  
**94014B**



**WATER MANAGEMENT TRACT No. 1**  
TO BE MAINTAINED BY THE SMITH FARM MASTER ASSOCIATION, INC.



TRACT B-4

TRACT OS-1

TRACT OS-2

N: 814762.85  
E: 928946.84

S 89° 07' 19" W 2752.60 (TOTAL)

696.58 LIMITS OF PLAT

LAKE CHARLESTON PLAT No. 3  
PLAT BOOK 62, PAGES 55-68

110' RIGHT OF WAY PER  
OFFICIAL RECORD BOOK 5897, PAGE 1776

55' LAKE WORTH DRAINAGE DISTRICT L-18 CANAL  
PER QUIT CLAIM DEED, OFFICIAL RECORD BOOK 3289, PAGE 0049

50' LAKE WORTH DRAINAGE DISTRICT L-18 CANAL  
PER QUIT CLAIM DEED, OFFICIAL RECORD BOOK 1585, PAGE 505

TAZ-438

SEE SHEET 5 OF 8  
MATCH LINE

SEE SHEET 4 OF 8  
MATCH LINE

DIVISION: SMITH DAIRY WEST  
BOOK: 7A  
PAGE: 142  
FLOOD MAP # 170A  
QUAD # 49  
ZONING PU0  
SS 94-77  
ZIP CODE 33447  
PUB NAME SAME