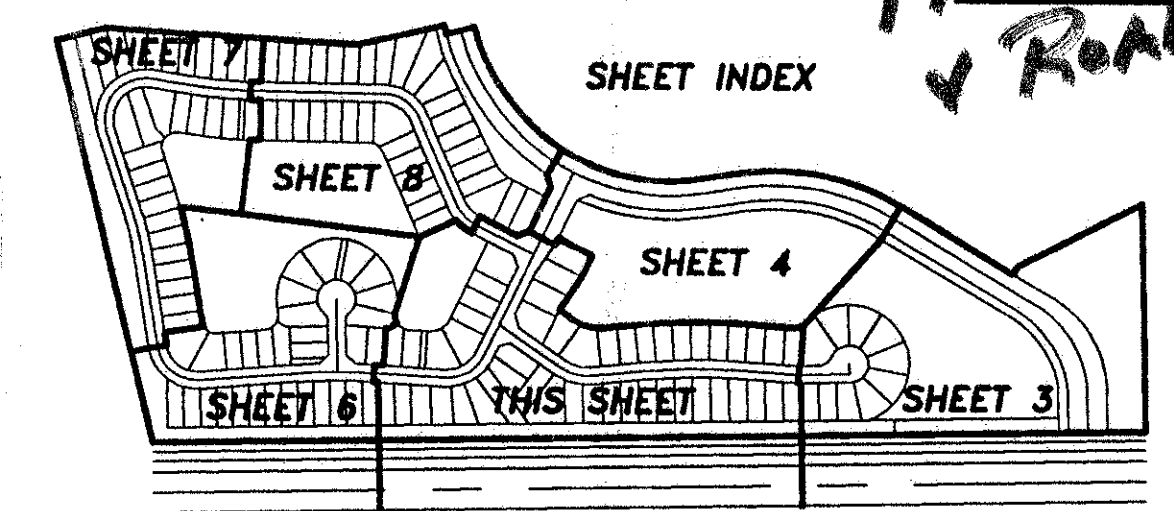


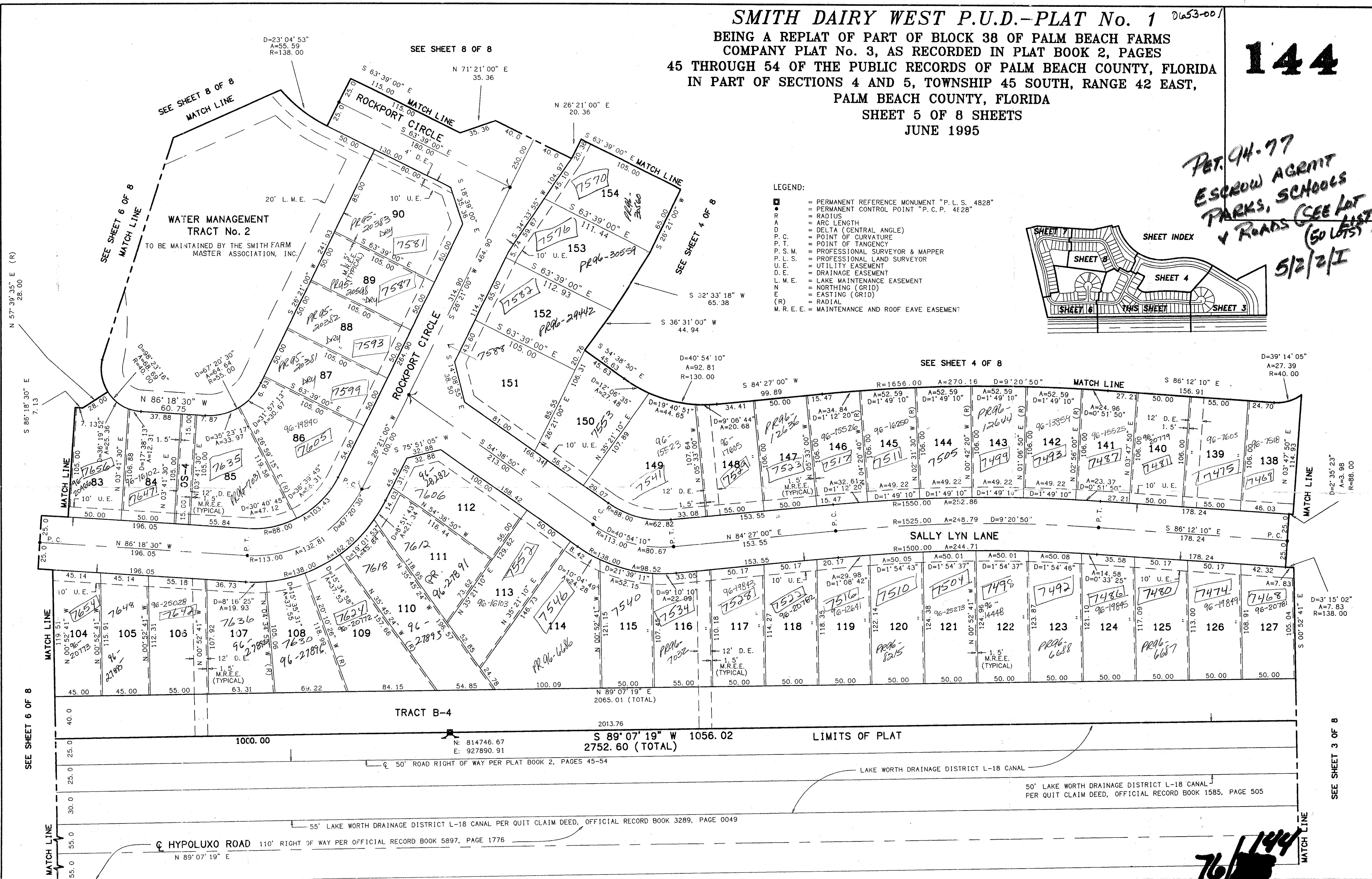
SMITH DAIRY WEST P.U.D.-PLAT No. 1 D1653-001
 BEING A REPLAT OF PART OF BLOCK 38 OF PALM BEACH FARMS
 COMPANY PLAT No. 3, AS RECORDED IN PLAT BOOK 2, PAGES
 45 THROUGH 54 OF THE PUBLIC RECORDS OF PALM BEACH COUNTY, FLORIDA
 IN PART OF SECTIONS 4 AND 5, TOWNSHIP 45 SOUTH, RANGE 42 EAST,
 PALM BEACH COUNTY, FLORIDA
 SHEET 5 OF 8 SHEETS
 JUNE 1995

144

*PET. 94-77
 ESCROW AGENT
 PARKS, SCHOOLS
 & ROADS (SEE LIST)
 (50 LOTS)
 5/2/2/I*



- LEGEND:**
- ☐ = PERMANENT REFERENCE MONUMENT "P. L. S. 4828"
 - = PERMANENT CONTROL POINT "P. C. P. 4E28"
 - R = RADIUS
 - A = ARC LENGTH
 - Δ = DELTA (CENTRAL ANGLE)
 - P. C. = POINT OF CURVATURE
 - P. T. = POINT OF TANGENCY
 - P. S. M. = PROFESSIONAL SURVEYOR & MAPPER
 - P. L. S. = PROFESSIONAL LAND SURVEYOR
 - U. E. = UTILITY EASEMENT
 - D. E. = DRAINAGE EASEMENT
 - L. M. E. = LAKE MAINTENANCE EASEMENT
 - N = NORTHING (GRID)
 - E = EASTING (GRID)
 - (R) = RADIAL
 - M. R. E. E. = MAINTENANCE AND ROOF EAVE EASEMENT



SUBDIVISION: Smith Dairy West
 BOOK 76 PAGE 144
 FLOOD ZONE B FLOOD MAP #170 A
 QUAD # 49 ZONING PUD
 BE 94-77 ZIP CODE 33467
 PUD NAME SAVANNAH

TAZ-438

LAKE CHARLESTON PLAT No. 3
 PLAT BOOK 62, PAGES 55-68

0653-001

| | | |
|--|---|---------------------------------|
| SCALE: 1" = 40' | NICK MILLER, INC. Surveying Planning & Development | DRAWN BY: |
| DATE: JUNE 1995 | | CHK: |
| SMITH DAIRY WEST P.U.D.-PLAT No.1 | | |
| 2580 Rockport Circle, Suite 105 Palm Beach Gardens, Florida 33410 (407) 627-5200 | | DRAWING NUMBER 940148 |