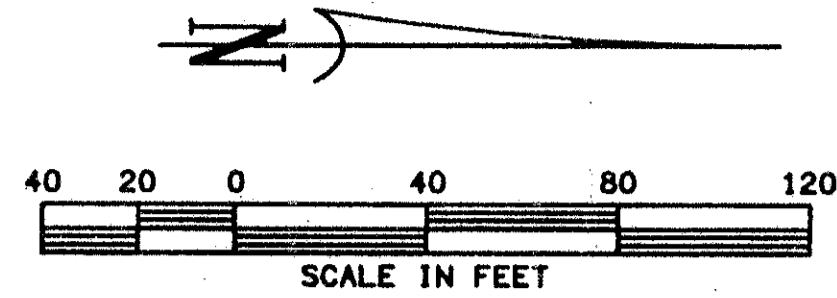
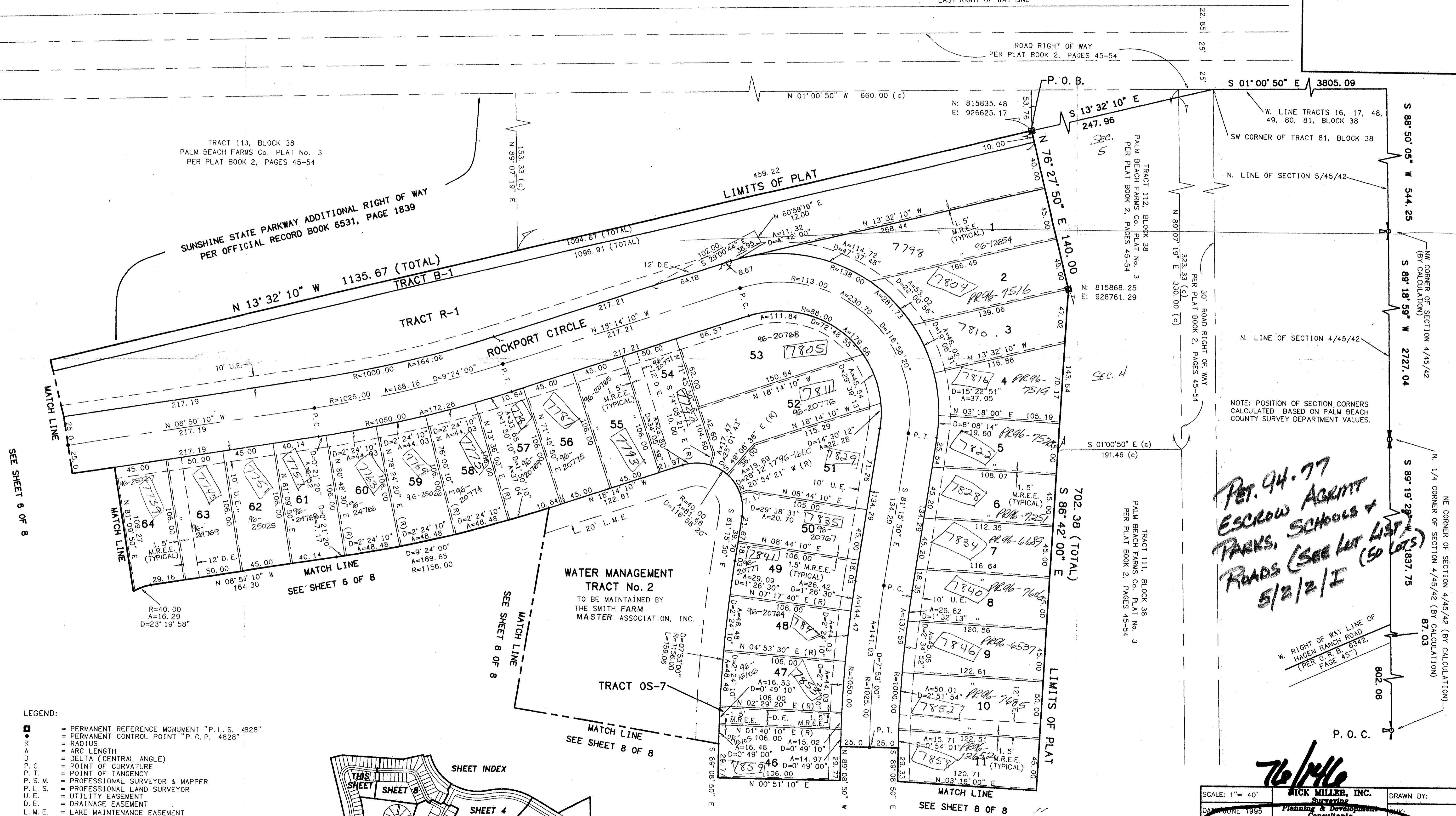


**SMITH DAIRY WEST P.U.D.-PLAT No. 1**  
 BEING A REPLAT OF PART OF BLOCK 38 OF PALM BEACH FARMS  
 COMPANY PLAT No. 3, AS RECORDED IN PLAT BOOK 2, PAGES  
 45 THROUGH 54 OF THE PUBLIC RECORDS OF PALM BEACH COUNTY, FLORIDA  
 IN PART OF SECTIONS 4 AND 5, TOWNSHIP 45 SOUTH, RANGE 42 EAST,  
 PALM BEACH COUNTY, FLORIDA  
 SHEET 7 OF 8 SHEETS  
 JUNE 1995

**146**



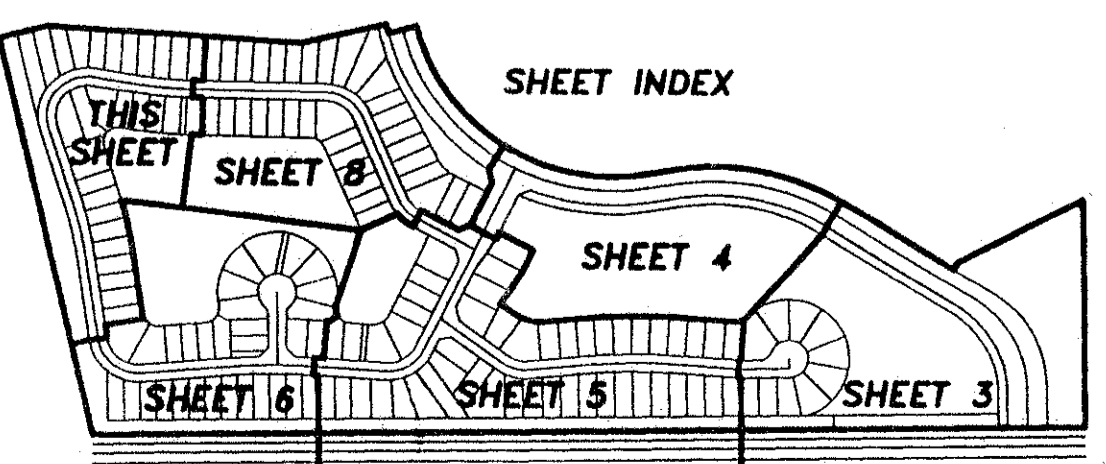
SUNSHINE STATE PARKWAY  
 PER THE 1955 RIGHT OF WAY MAP  
 PREPARED BY GANNETT, FLEMING, CORDRY & CARPENTER, INC.  
 SHEET 8 OF 13  
 EAST RIGHT OF WAY LINE



SUBDIVISION \*SMITH DAIRY WEST  
 BOOK 76 PAGE 146  
 FLOOD ZONE B FLOOD MAP #170A  
 QUAD # 49 ZONING PUD  
 SE 74-77 ZIP CODE 33467  
 PUD NAME SPWIL

Dave  
 4-8-95

- LEGEND:**
- PERMANENT REFERENCE MONUMENT "P. L. S. 4828"
  - PERMANENT CONTROL POINT "P. C. P. 4828"
  - RADIUS
  - ARC LENGTH
  - Δ DELTA (CENTRAL ANGLE)
  - POINT OF CURVATURE
  - POINT OF TANGENCY
  - P.S. PROFESSIONAL SURVEYOR & MAPPER
  - P.L.S. PROFESSIONAL LAND SURVEYOR
  - U.E. UTILITY EASEMENT
  - D.E. DRAINAGE EASEMENT
  - L.M.E. LAKE MAINTENANCE EASEMENT
  - N. NORTHING (GRID)
  - E. EASTING (GRID)
  - (c) CALCULATED
  - O.R.B. OFFICIAL RECORD BOOK
  - (R) RADIAL
  - M.R.E.E. MAINTENANCE AND ROOF EAVE EASEMENT



*PET. 94-77  
 ESCROW AGENT  
 PARKS, SCHOOLS &  
 ROADS (SEE LET LIST)  
 5/2/2/I (50 LOTS)*

*76/146*

**0653-001**

SCALE: 1"= 40'	<b>RICK MILLER, INC.</b> Surveying Planning & Development Consultants	DRAWN BY:
DATE: JUNE 1995		
<b>SMITH DAIRY WEST P.U.D.-PLAT No.1</b>		DRAWING NUMBER
4560 RCA Blvd. • Suite 105 Palm Beach Gardens, FL 33418 (407) 627-5200		<b>940148</b>