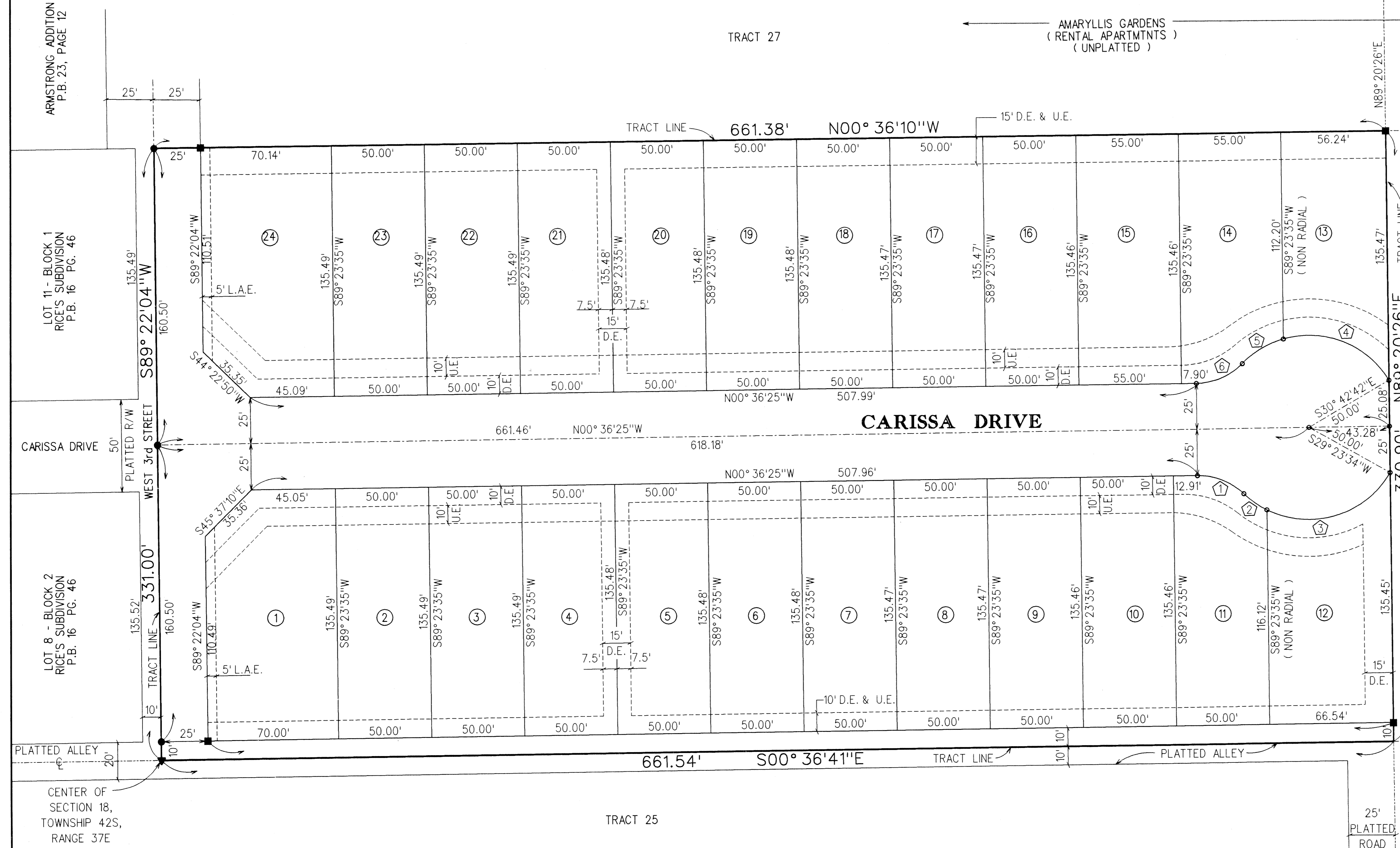
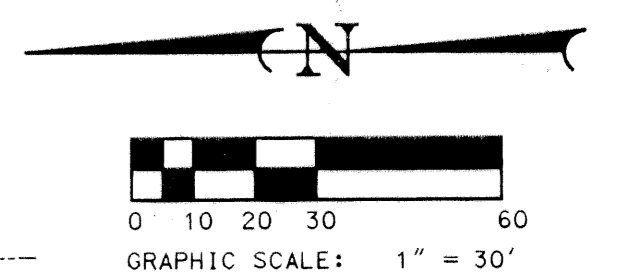
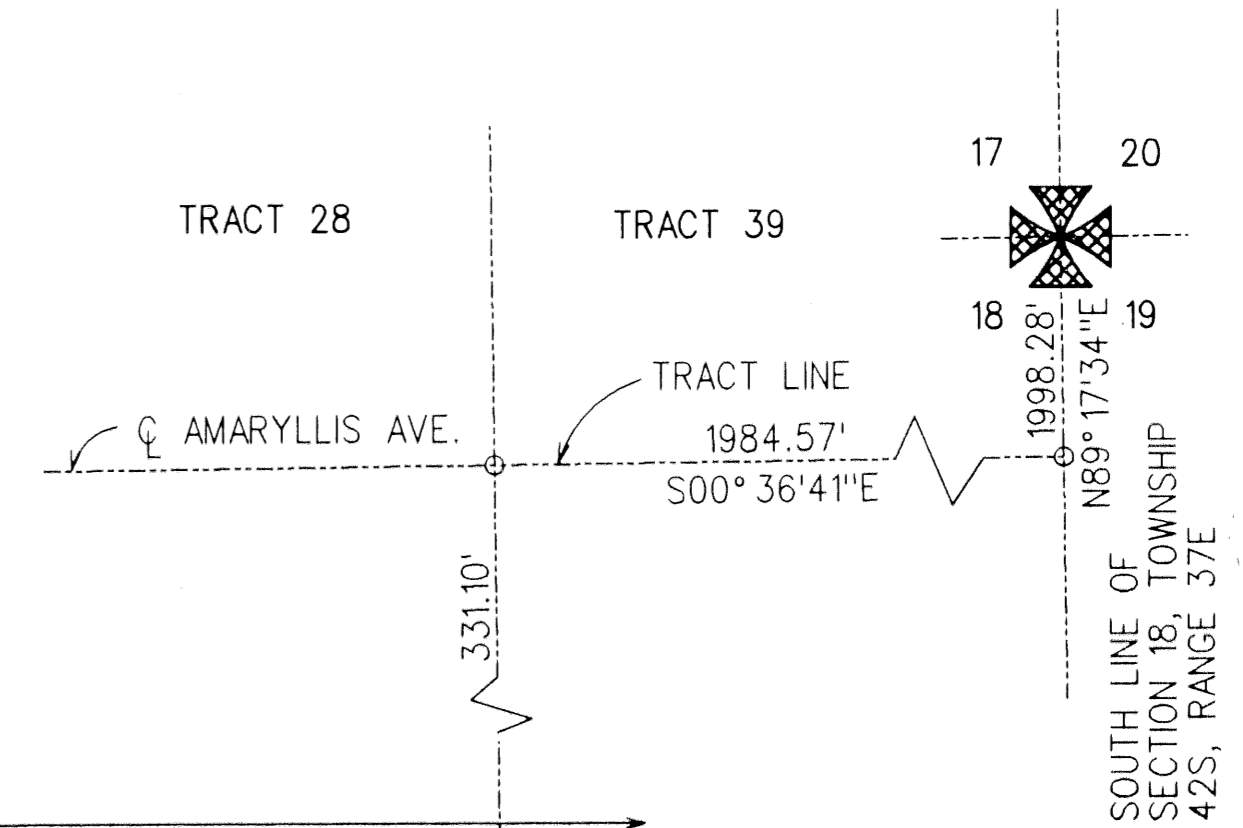


## PLAT OF CARISSA GARDENS

IN SECTION 18, TOWNSHIP 42 SOUTH, RANGE 37 EAST, CITY OF PAHOKEE,  
PALM BEACH COUNTY, FLORIDA, BEING A RESUBDIVISION OF TRACT 26, PLAT  
OF RIDGEWAY BEACH AS RECORDED IN PLAT BOOK 7, PAGE 11, PUBLIC  
RECORDS OF PALM BEACH COUNTY, FLORIDA.

SHEET 2 OF 2

JANUARY 1996



CURVE DATA			
CURVE	LENGTH	DELTA	RADIUS
①	27.55'	45°05'57"	35'
②	15.33'	17°33'51"	50'
③	76.39'	87°32'07"	50'
④	65.53'	75°05'39"	50'
⑤	25.09'	29°54'01"	50'
⑥	27.55'	43°05'57"	35'

- NOTES:
- TRACT LINES ARE THE SAME AS CENTERLINES OF THE PLATTED ROADWAYS AS IN PLAT BOOK 7, PG. 11.
  - BEARINGS SHOWN HEREON ARE GRID BEARINGS OF THE FLORIDA STATE PLANE COORDINATE SYSTEM, EAST ZONE, OBTAINED FROM PALM BEACH COUNTY SATELLITE STATION DAVIS AND ITS AZIMUTH MARK DAVIS A-2, POSITIONS ON THE 1972 FREE ADJUSTMENT. BASIS OF BEARINGS IS THE C OF AMARYLLIS AVE. I.E. S 00°36'41" E
  - LEGEND:
    - L.A.E. DENOTES LIMITED ACCESS EASEMENT
    - U.E. DENOTES UTILITY EASEMENT
    - D.E. DENOTES DRAINAGE EASEMENT
    - DENOTES P.R.M. SET (PSL)
    - DENOTES P.C.P. TO BE SET
    - R DENOTES RADIUS

SUBDIVISION CARISSA GARDENS  
 BOOK 76 PAGE 157  
 FLOOD ZONE FLOOD MAP  
 QUAD ZONING  
 SE ZIP CODE  
 PUD NAME CARISSA GARDENS  
 CITY OF PAHOKEE

CENTER OF SECTION 18, TOWNSHIP 42S, RANGE 37E

PARKVIEW MANOR  
P.B. 27, PAGE 17

JOB No. 95734P2

**JAMES R. ALMOND & ASSOCIATES, INC.**  
 SURVEYORS - MAPPERS - CONSULTANTS

**WEYANT & ASSOCIATES**  
 CONSULTING ENGINEERS