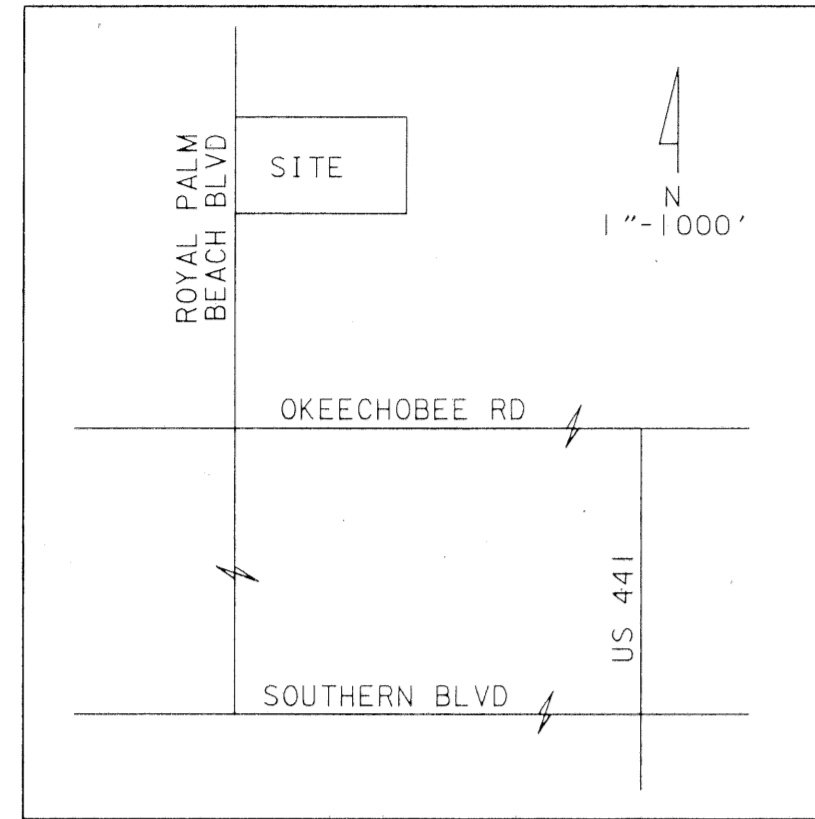


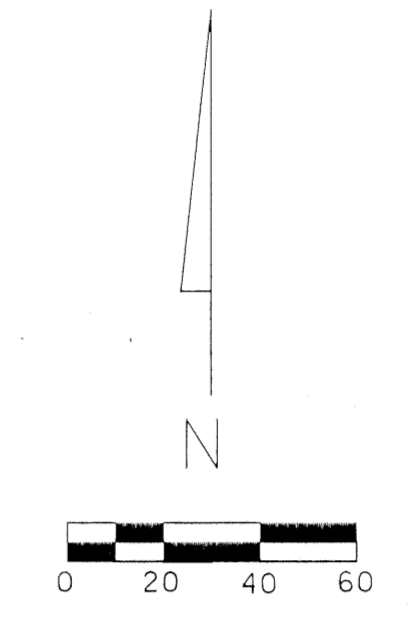
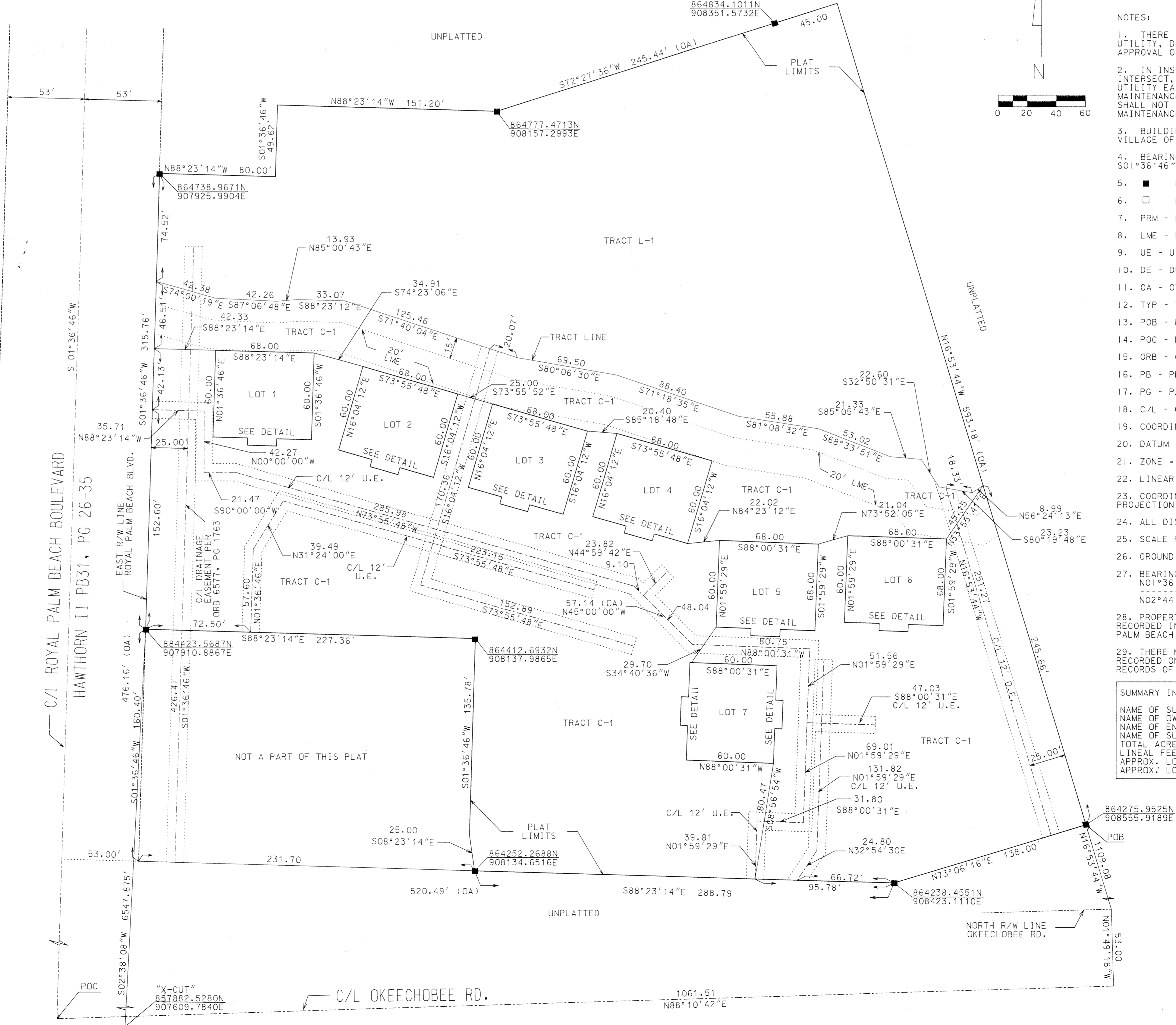
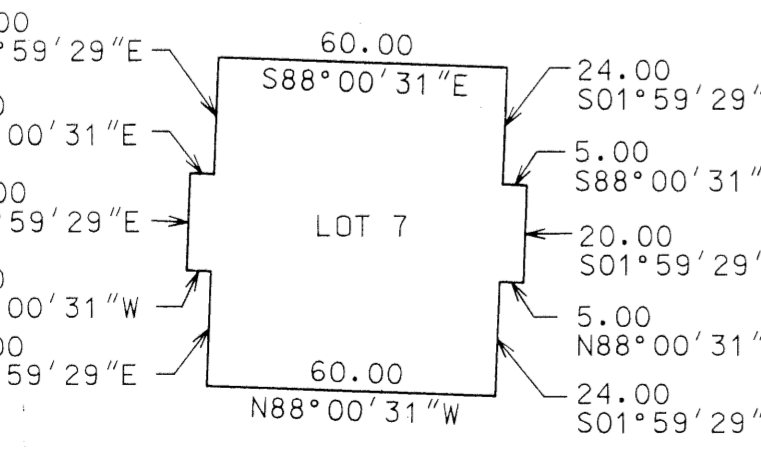
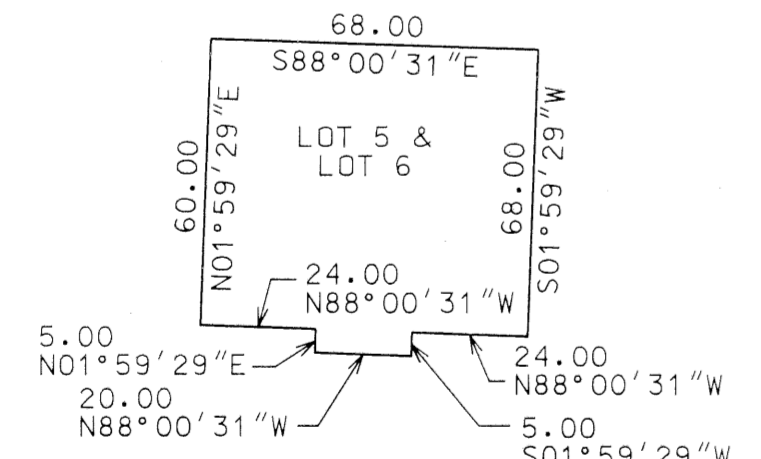
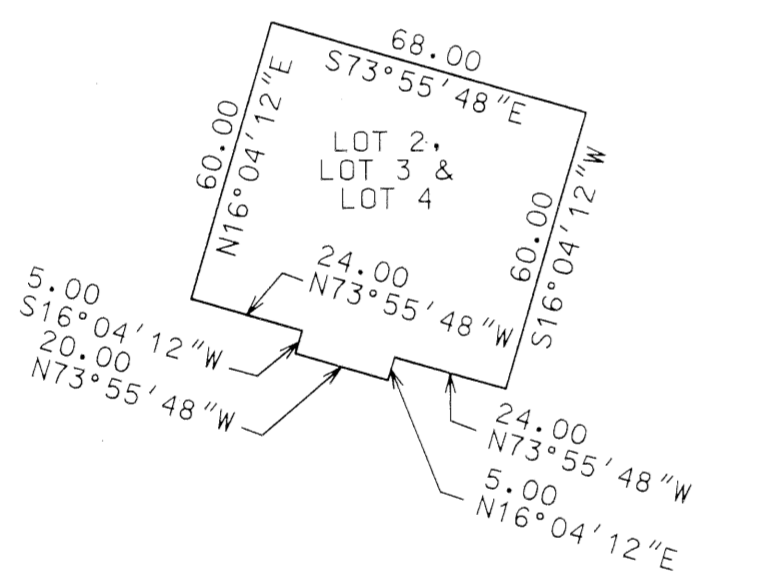
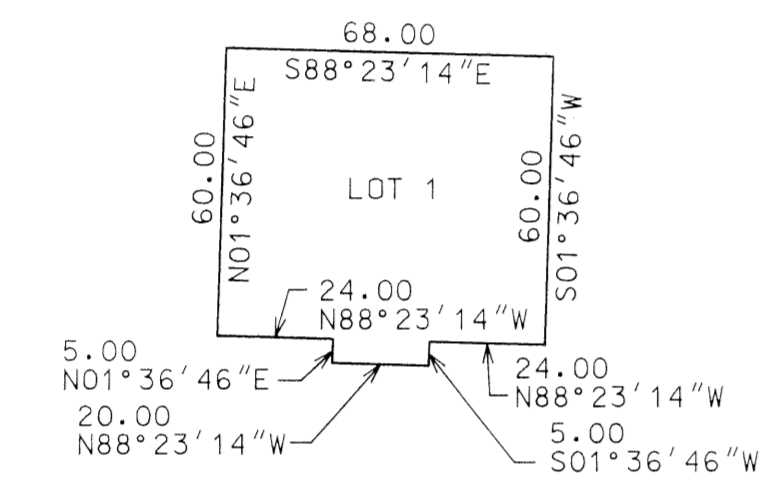
LAKEVIEW CENTER

VILLAGE OF ROYAL PALM BEACH, PALM BEACH COUNTY, FLORIDA
BEING A PLAT OF A PORTION OF THE SOUTH 1/2 OF SECTION 23, TOWNSHIP 43 SOUTH, RANGE 41 EAST
DECEMBER 1995 SHEET 2 OF 2



LOCATION MAP

DETAILS



- NOTES:
1. THERE SHALL BE NO BUILDINGS OR LANDSCAPING PLACED ON UTILITY, DRAINAGE OR MAINTENANCE EASEMENTS WITHOUT THE APPROVAL OF THE EASEMENT HOLDER.
 2. IN INSTANCES WHERE DRAINAGE AND UTILITY EASEMENTS INTERSECT, THOSE AREAS OF INTERSECTION ARE DRAINAGE AND UTILITY EASEMENTS. CONSTRUCTION, OPERATION, AND MAINTENANCE OF UTILITIES WITHIN THESE AREAS OF INTERSECTION SHALL NOT INTERFERE WITH THE CONSTRUCTION, OPERATION, AND MAINTENANCE OF DRAINAGE FACILITIES.
 3. BUILDING SETBACKS SHALL BE AS REQUIRED BY CURRENT VILLAGE OF ROYAL PALM BEACH REGULATIONS.
 4. BEARINGS SHOWN HEREON ARE RELATIVE TO A BEARING OF S01°36'46"W ALONG THE CENTERLINE OF ROYAL PALM BEACH BLVD.
 5. ■ PRM SET - STAMPED PLS3871
 6. □ PRM FOUND
 7. PRM - PERMANENT REFERENCE MONUMENT
 8. LME - LAKE MAINTENANCE EASEMENT
 9. UE - UTILITY EASEMENT
 10. DE - DRAINAGE EASEMENT
 11. OA - OVERALL LENGTH
 12. TYP - TYPICAL
 13. POB - POINT OF BEGINNING
 14. POC - POINT OF COMMENCEMENT
 15. ORB - OFFICIAL RECORD BOOK
 16. PB - PLAT BOOK
 17. PG - PAGE NUMBER
 18. C/L - CENTER LINE
 19. COORDINATES SHOWN ARE GRID
 20. DATUM - NAD 83, 1990 ADJUSTMENT
 21. ZONE - FLORIDA EAST
 22. LINEAR UNIT - US SURVEY FOOT/METER
 23. COORDINATE SYSTEM 1983 STATE PLANE TRANSVERSE MERCATOR PROJECTION
 24. ALL DISTANCES ARE GROUND
 25. SCALE FACTOR = 1.000014109
 26. GROUND DISTANCE X SCALE FACTOR = GRID DISTANCE
 27. BEARING ROTATION EQUATION (PLAT TO GRID):
N01°36'46"E (PLAT) - 01°07'44" CLOCKWISE ROTATION
N02°44'30"E (GRID)
 28. PROPERTY IS SUBJECT TO A CROSS EASEMENT AGREEMENT AS RECORDED IN ORB 6577, PG 1758, IN THE PUBLIC RECORDS OF PALM BEACH COUNTY.
 29. THERE MAY BE ADDITIONAL RESTRICTIONS THAT ARE NOT RECORDED ON THIS PLAT THAT MAY BE FOUND IN THE PUBLIC RECORDS OF PALM BEACH COUNTY, FLORIDA.

SUMMARY INFORMATION	
NAME OF SUBDIVISION	LAKEVIEW CENTER
NAME OF OWNER	LAKEVIEW PARTNERS INC.
NAME OF ENGINEER	CROSSROADS ENGINEERING & SURVEYING
NAME OF SURVEYOR	CROSSROADS ENGINEERING & SURVEYING
TOTAL ACRES	6.21 AC
LINEAL FEET IN STREETS	0
APPROX. LOT DIMENSIONS	68' X 60'
APPROX. LOT SIZE	4180 SF

SUBMISSION # LAKEVIEW CENTER
 BOOK 76 PAGE 173
 FLOOD ZONE FLOOD MAP
 QUAD # ZONING
 SE ZIP CODE
 PUD NAME LAKEVIEW CENTER

