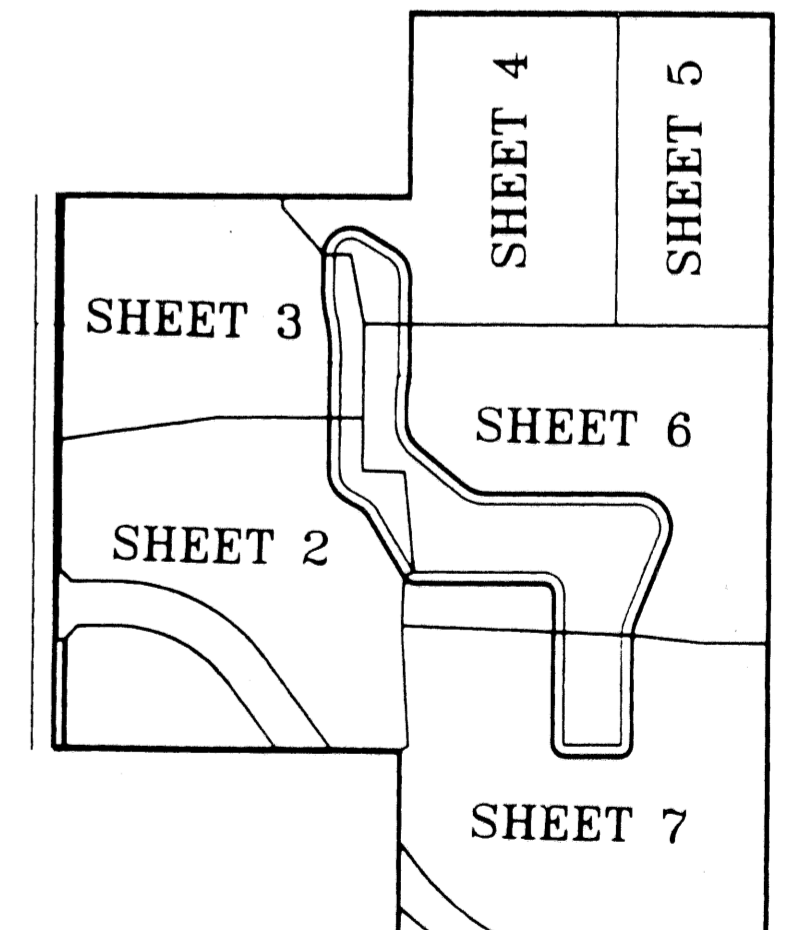
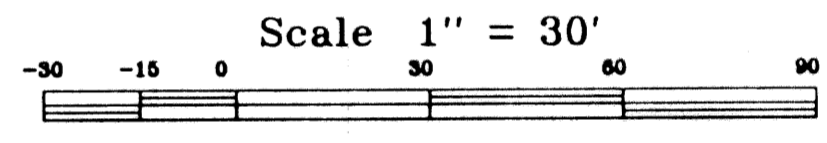
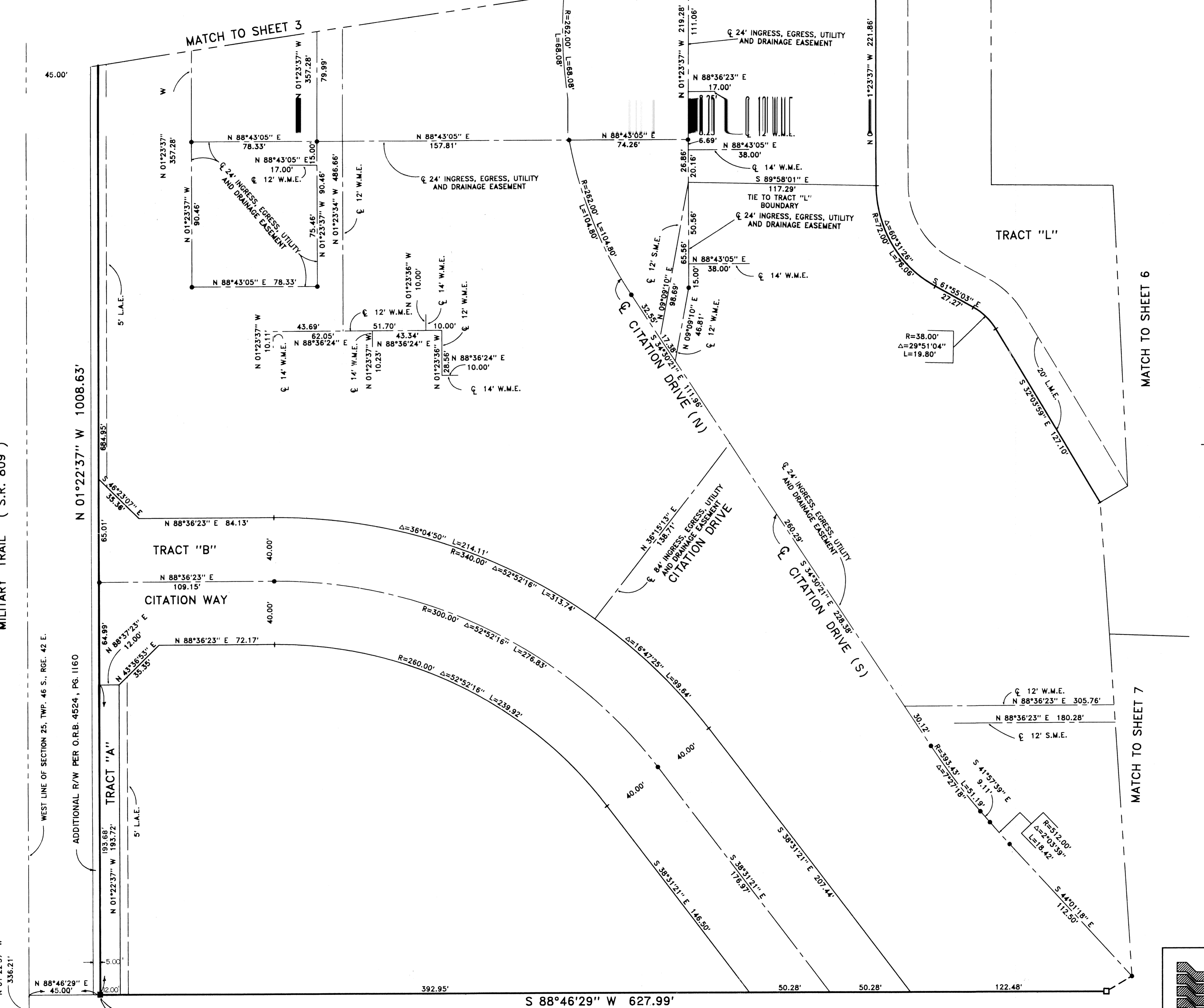


**CITATION CLUB**  
 LYING IN SECTION 25, TOWNSHIP 46 SOUTH, RANGE 42 EAST,  
 CITY OF DELRAY BEACH, PALM BEACH COUNTY, FLORIDA.  
 SHEET 2 OF 7 SHEETS      OCTOBER, 1995

**182**

STATE OF FLORIDA  
 COUNTY OF PALM BEACH      SS  
 This Plat was filed for record at \_\_\_\_\_  
 \_\_\_\_\_ M. This \_\_\_\_\_ day of \_\_\_\_\_, 19\_\_\_\_,  
 and duly recorded in Plat Book No. \_\_\_\_\_  
 on Page \_\_\_\_\_  
 Dorothy H. Wilken, Clerk of the Circuit Court  
 By \_\_\_\_\_ D.C.

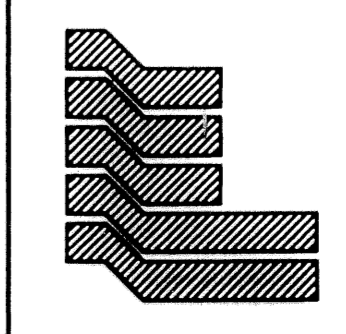


FIND PALM BEACH COUNTY  
 BRASS DISK AT WEST QUARTER CORNER  
 OF SEC. 25, TWP. 46 S., RGE. 42 E.  
**P.O.C.**  
 N 01°22'37" W 336.21'

**P.O.B.**

S 88°46'29" W 627.99'  
 NOT PLATTED

BOOK 76 PAGE 18A  
 FLOOD ZONE - FLOOD MAP +  
 QUAD # - ZONING  
 SE - ZIP CODE -  
 PUD NAME - City of Delray



Landmark Surveying & Mapping Inc.  
 1850 FOREST HILL BOULEVARD  
 PH. (407)433-5405 SUITE 100 W.P.B. FLORIDA

**CITATION CLUB**