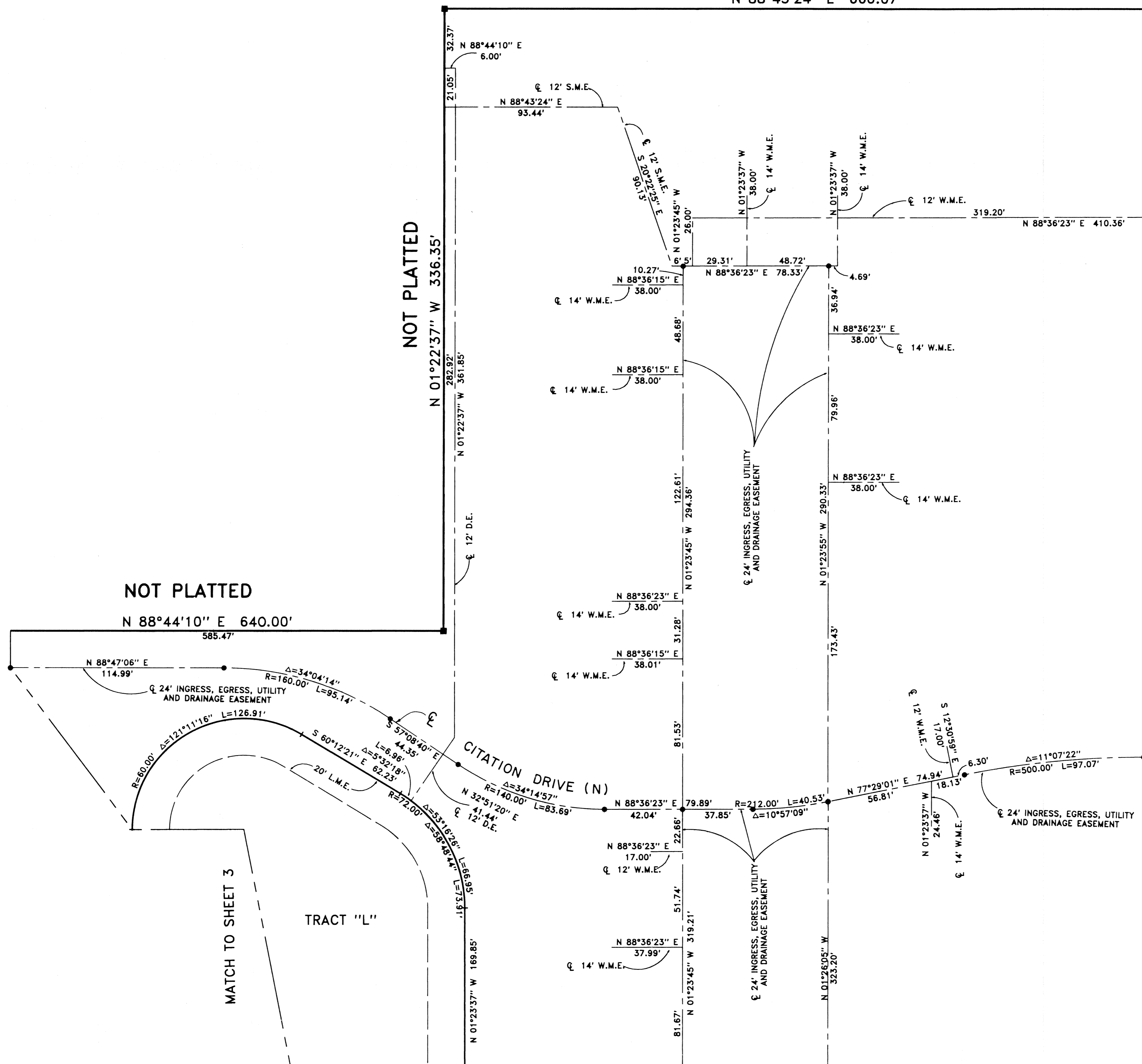


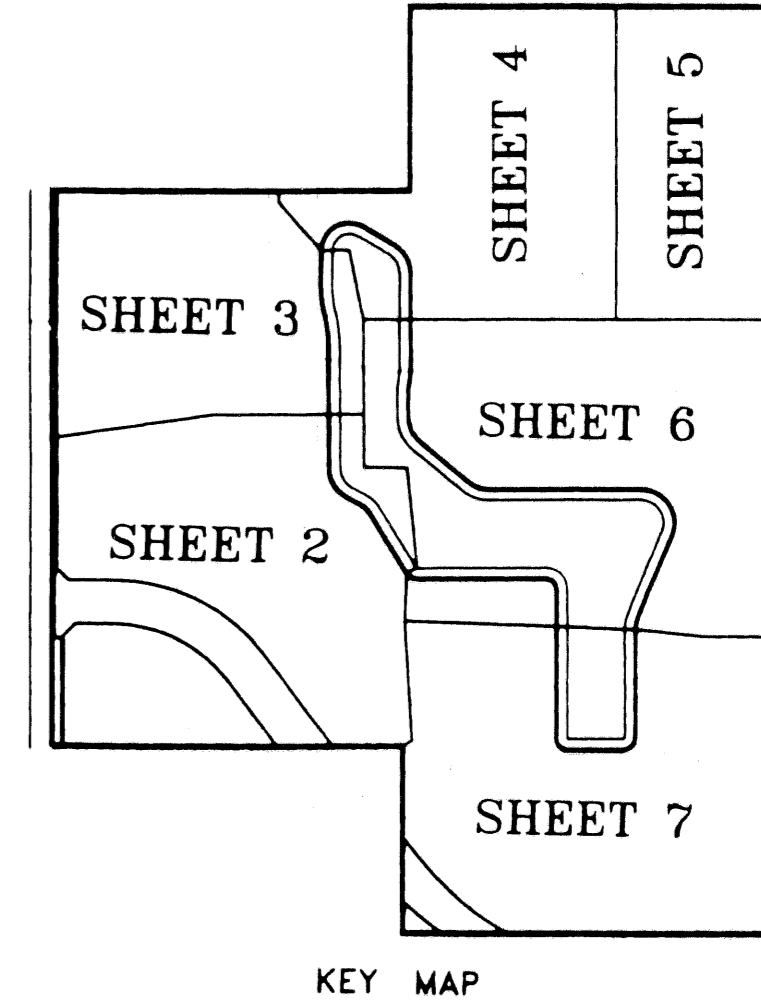
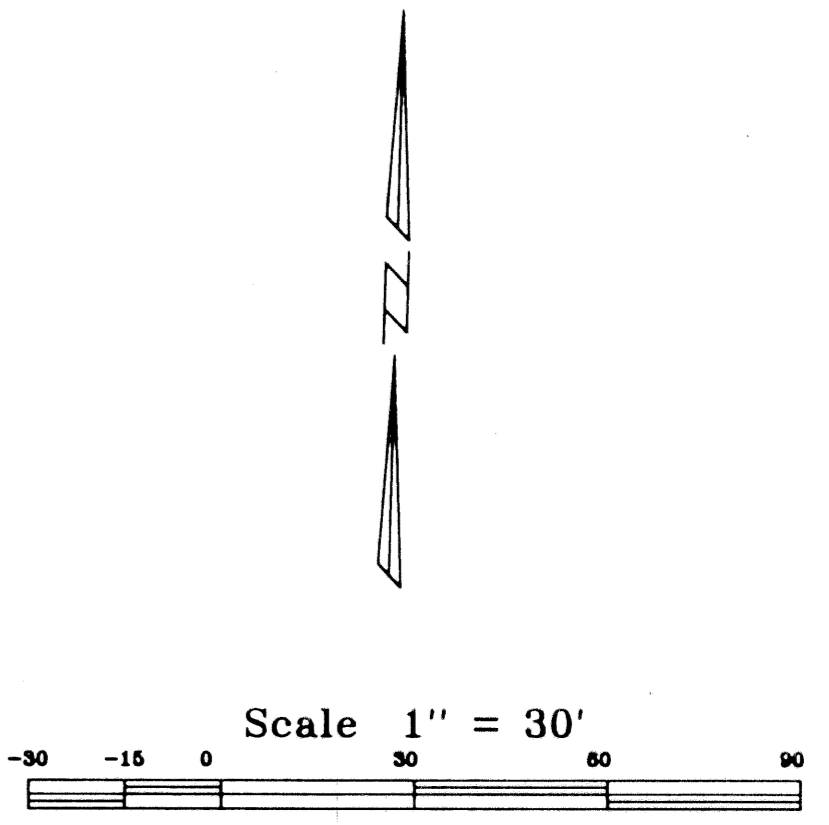
CITATION CLUB
 LYING IN SECTION 25, TOWNSHIP 46 SOUTH, RANGE 42 EAST,
 CITY OF DELRAY BEACH, PALM BEACH COUNTY, FLORIDA.
 SHEET 4 OF 7 SHEETS OCTOBER, 1995

184

NOT PLATTED
 N 88°43'24" E 660.07'



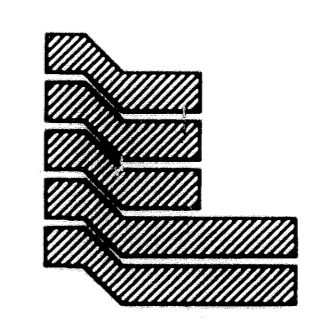
STATE OF FLORIDA
 COUNTY OF PALM BEACH ss
 This Plat was filed for record at _____
 M. This _____ day of _____, 19____
 and duly recorded in Plat Book No. _____
 on Page _____
 Dorothy H. Wilken, Clerk of the Circuit Court
 By _____ D.C.



MATCH TO SHEET 5

MATCH TO SHEET 6

SUBDIVISION # CITATION CLUB
 BOOK 76 PAGE 184
 FLOOD ZONE - FLOOD MAP # -
 GUAD # - ZONING -
 SE - ZIP CODE -
 PUD NAME - CITY OF DELRAY



Landmark Surveying & Mapping Inc.
 1850 FOREST HILL BOULEVARD
 PH. (407)433-5405 SUITE 100 W.P.B. FLORIDA

CITATION CLUB