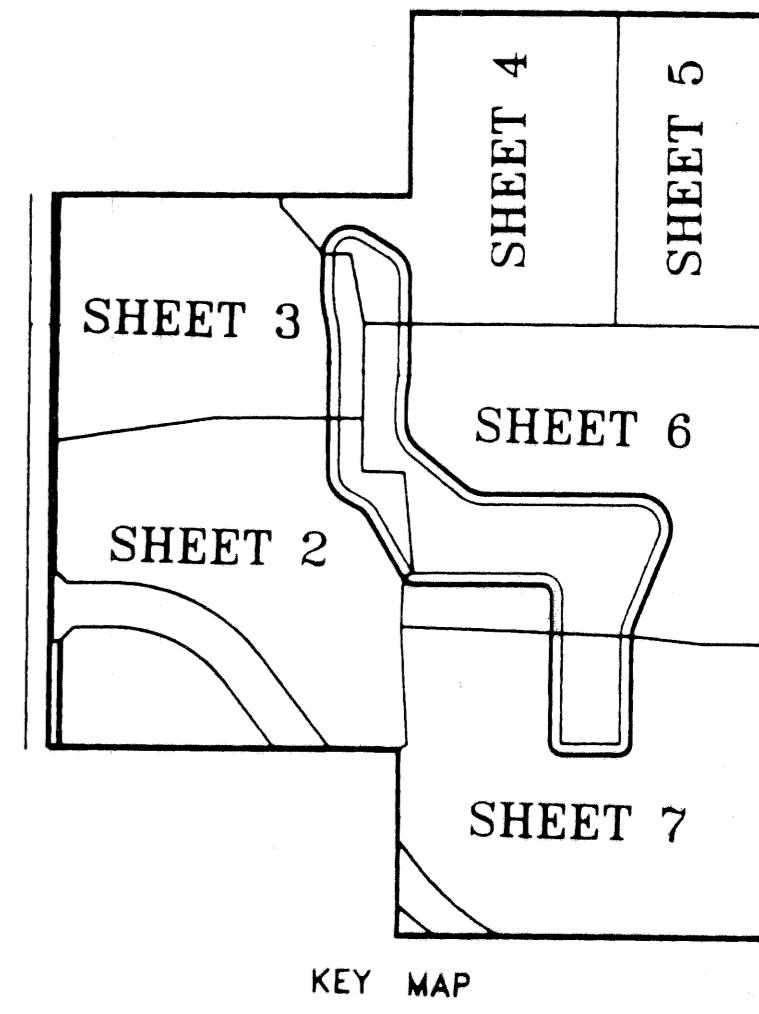
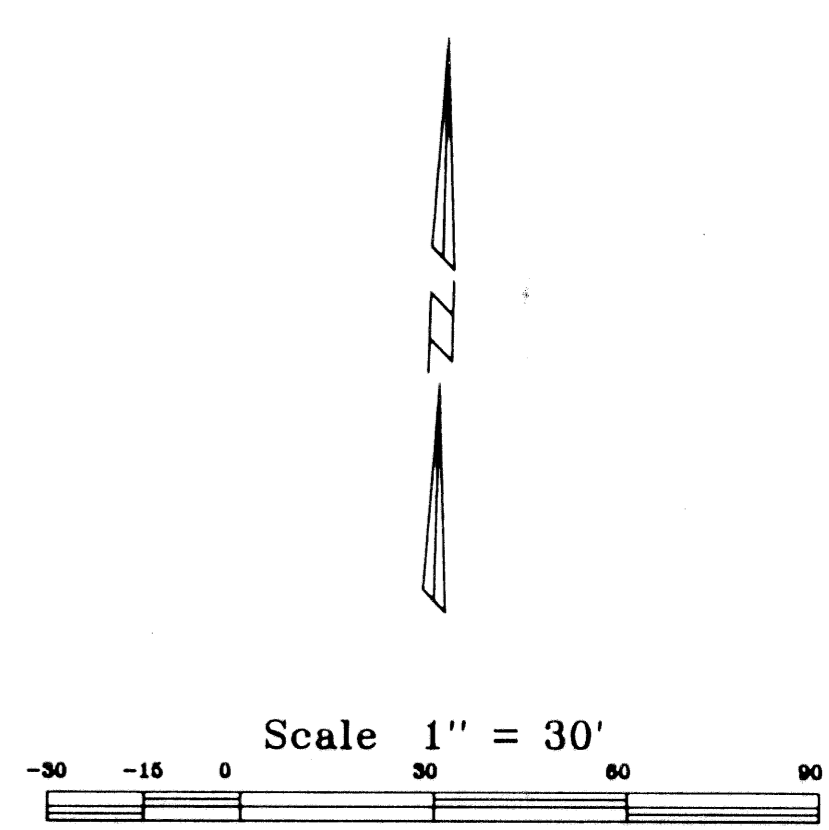


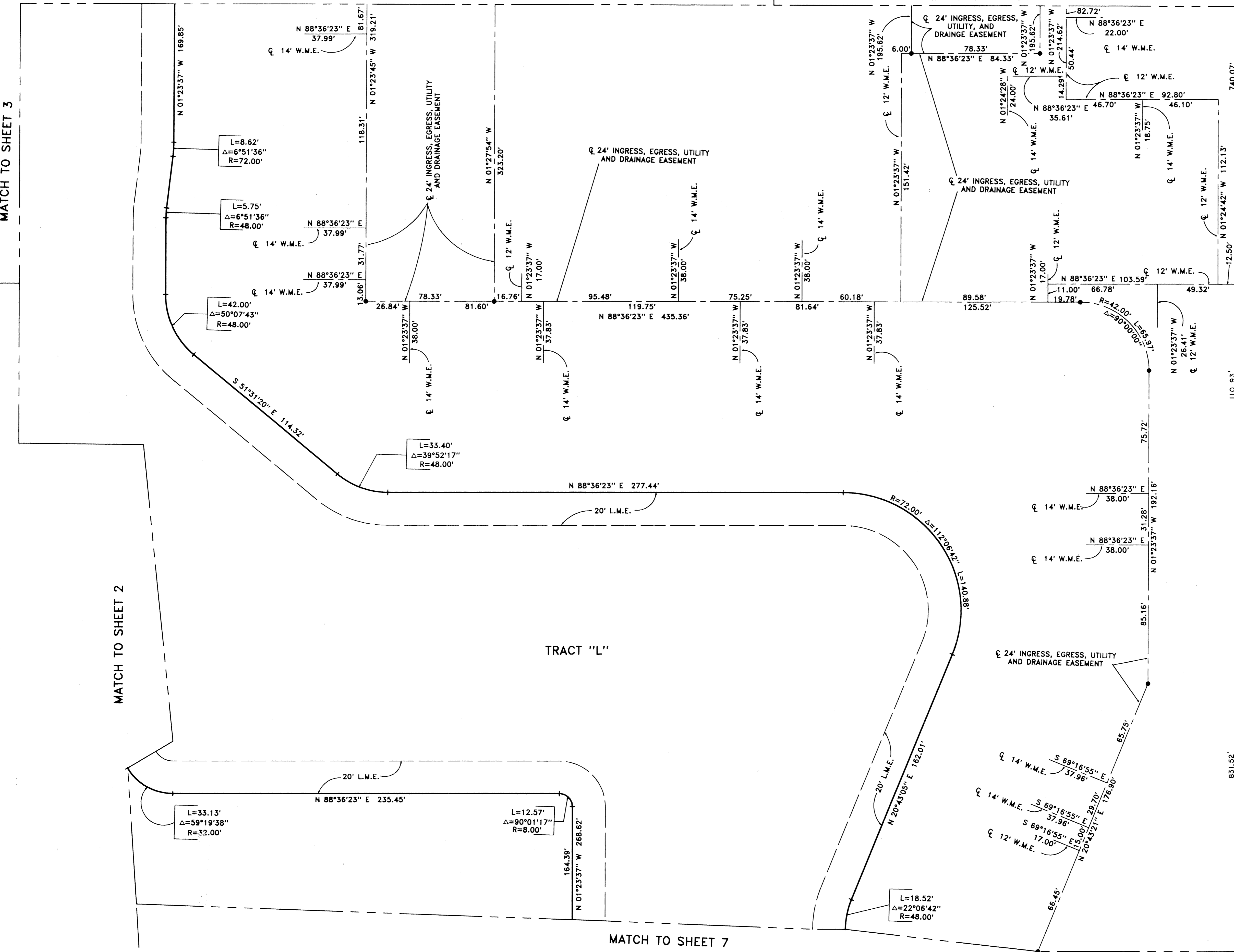
**CITATION CLUB**  
 LYING IN SECTION 25, TOWNSHIP 46 SOUTH, RANGE 42 EAST,  
 CITY OF DELRAY BEACH, PALM BEACH COUNTY, FLORIDA.  
 SHEET 6 OF 7 SHEETS      OCTOBER, 1995

**186**

STATE OF FLORIDA  
 COUNTY OF PALM BEACH ss  
 This Plat was filed for record at \_\_\_\_\_  
 M. This day of \_\_\_\_\_, 19\_\_\_\_,  
 and duly recorded in Plat Book No. \_\_\_\_\_  
 on Page \_\_\_\_\_  
 Dorothy H. Wilken, Clerk of the Circuit Court  
 By \_\_\_\_\_ D.C.



NOT PLATTED



MATCH TO SHEET 3

MATCH TO SHEET 2

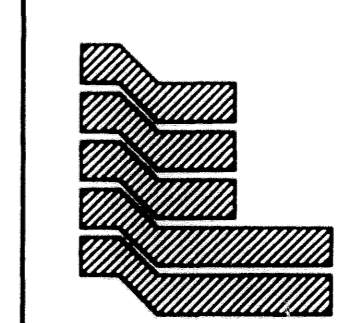
MATCH TO SHEET 7

MATCH TO SHEET 5

MATCH TO SHEET 4

TRACT "L"

SUBDIVISION - CITATION CLUB  
 BOOK 75 PAGE 186  
 FLOOD ZONE - FLOOD MAP \*  
 QUAD \* - ZONING -  
 SE - ZIP CODE -  
 PUD NAME - City of Delray



Landmark Surveying & Mapping Inc.  
 1850 FOREST HILL BOULEVARD  
 PH. (407)433-5405 SUITE 100 W.P.B. FLORIDA

**CITATION CLUB**