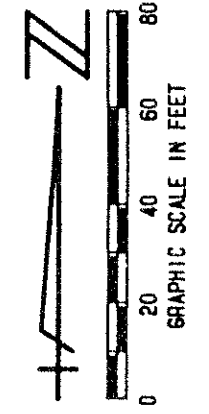


0587-013

190

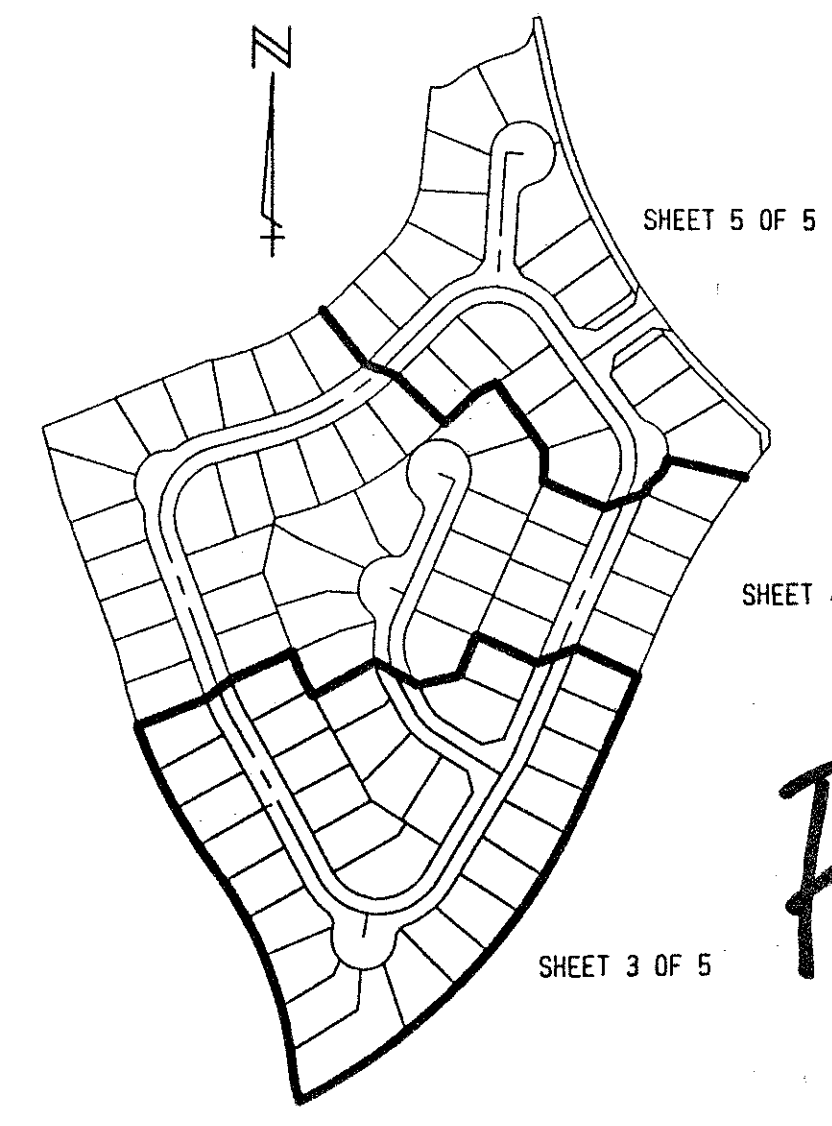
STATE OF FLORIDA
COUNTY OF PALM BEACH
THIS PLAT WAS FILED FOR
RECORD _____ DAY OF _____
AD. 1995 AND DULY RECORDED
IN PLAT BOOK _____ ON PAGES
_____ AND _____
DOROTHY H. WILKEN, CLERK
BY: _____, D.C.



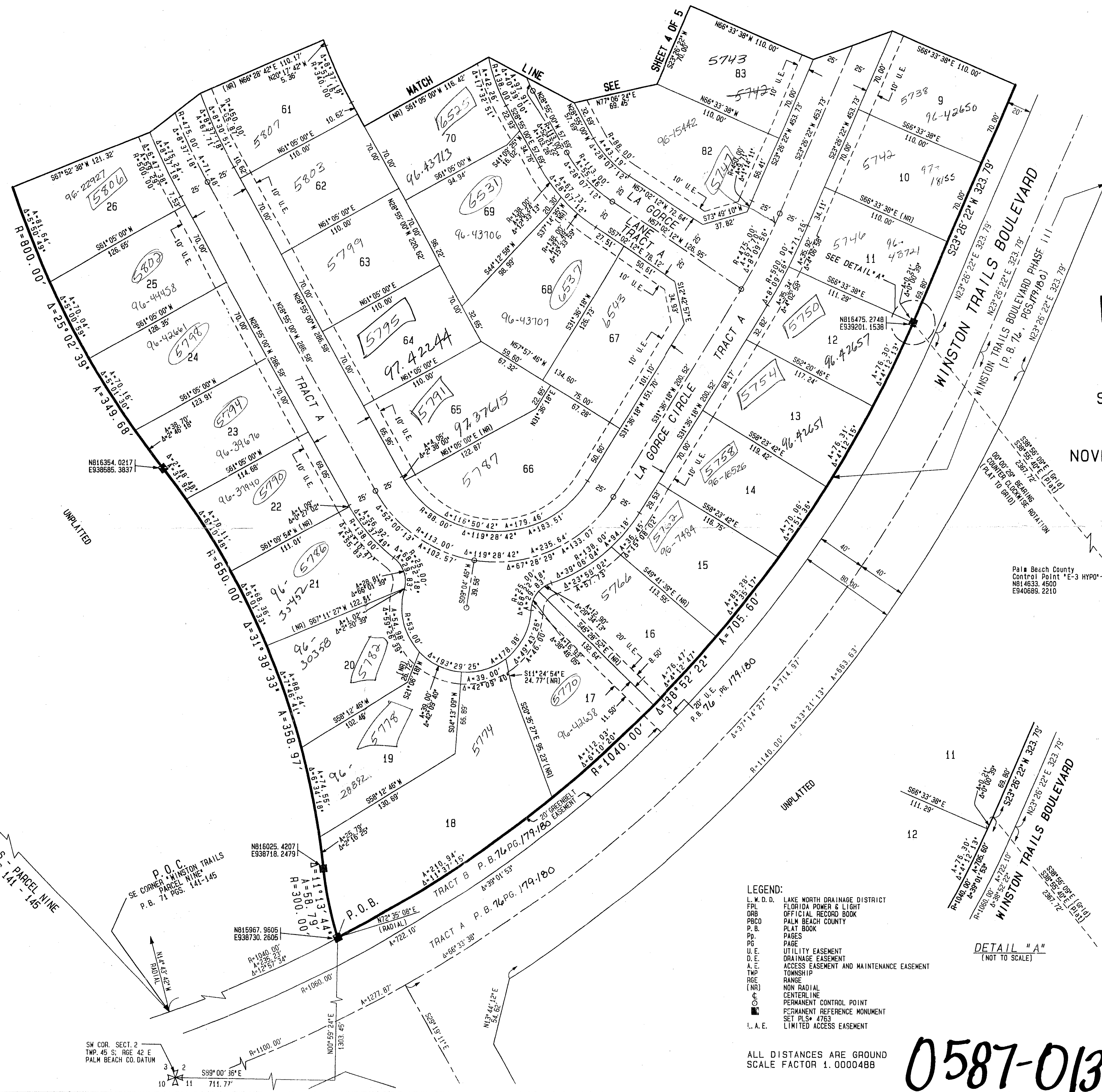
CIRCUIT COURT SEAL

WINSTON TRAILS PARCEL TEN

PART OF WINSTON TRAILS P. U. D.
SITUATE IN SECTION 2, TOWNSHIP 45
SOUTH, RANGE 42 EAST
PALM BEACH COUNTY, FLORIDA
NOVEMBER, 1994 SHEET 3 OF 5



PET 87-112C
ALLOCA 40001
5/2/2/I



- LEGEND:
- L.W.D.D. LAKE WORTH DRAINAGE DISTRICT
 - FPL FLORIDA POWER & LIGHT
 - ORB OFFICIAL RECORD BOOK
 - P.B.C. PALM BEACH COUNTY
 - P.B. PLAT BOOK
 - P.P. PAGES
 - P.G. PAGE
 - U.E. UTILITY EASEMENT
 - D.E. DRAINAGE EASEMENT
 - A.E. ACCESS EASEMENT AND MAINTENANCE EASEMENT
 - T.W. TOWNSHIP
 - RGE RANGE
 - (NR) NON RADIAL
 - CENTERLINE
 - PERMANENT CONTROL POINT
 - PERMANENT REFERENCE MONUMENT
 - L.A.E. LIMITED ACCESS EASEMENT

ALL DISTANCES ARE GROUND
SCALE FACTOR 1.0000488

0587-013

MOCK, ROOS & ASSOCIATES, INC.
5720 CORPORATE WAY, WEST PALM BEACH, FL 33407 (407) 683-3113

SCALE: 1"=40'
DATE: NOVEMBER 1994
P.A. NO. 94155.00
DNG. NO. 45-42-02-14

WINSTON TRAILS PARCEL TEN
PART OF WINSTON TRAILS, P.U.D.
SECT. 2, TOWNSHIP 45 SOUTH, RANGE 42 EAST

BOOK 76 PAGE 198
FLOOD ZONE B
GRID # 87-112C
JOB CODE 33413
JOB NAME WINSTON TRAILS
PUD NAME WINSTON TRAILS

REV. 6-11-95
REV. 5-28-95
REV. 5-07-95
REV. 3-20-95
REV. 3-07-95

CADD FILE
WINTRP10

TAZ-437

UNPLATTED

UNPLATTED

UNPLATTED

DETAIL "A"
(NOT TO SCALE)

SHEET 3 OF 5