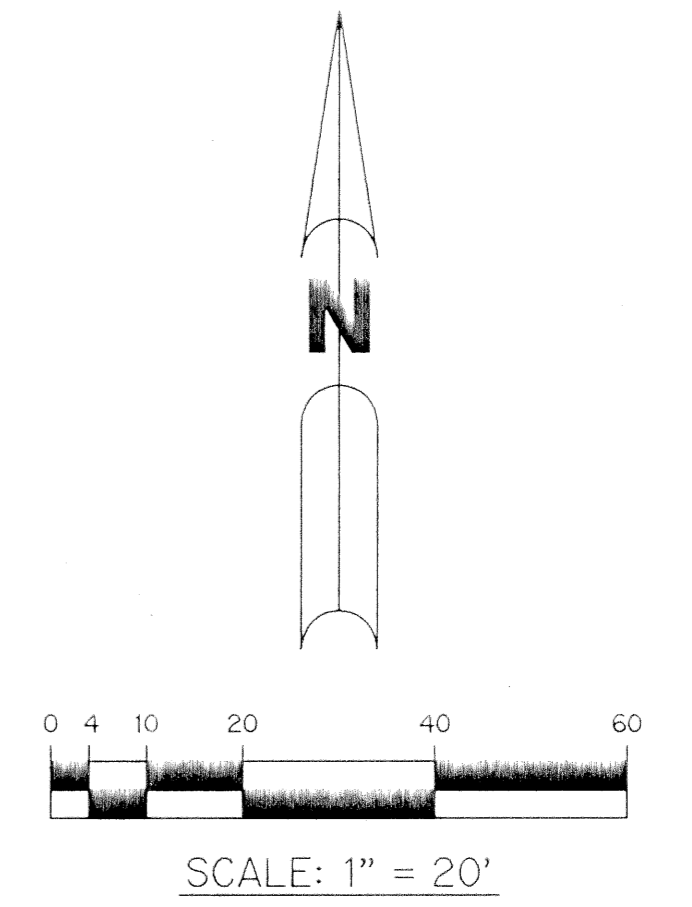
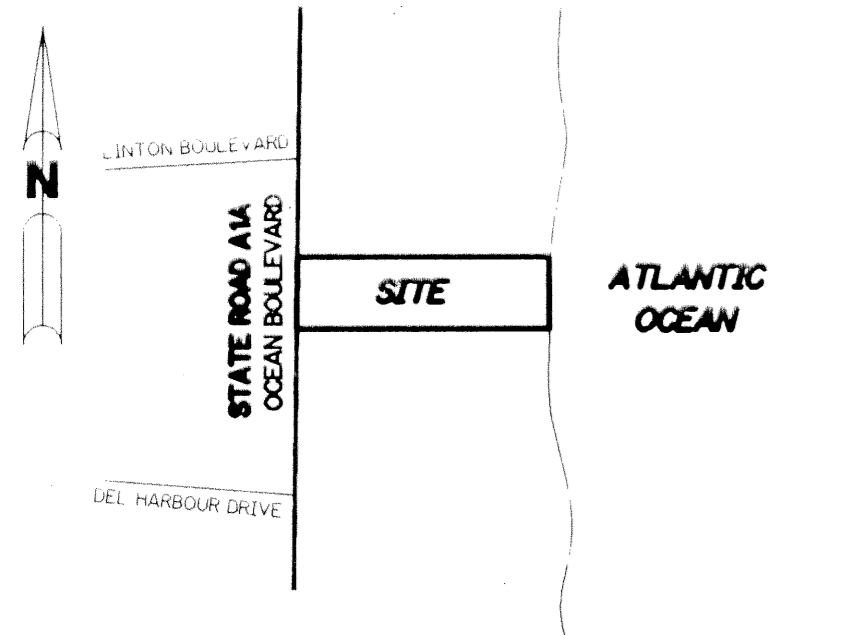


SEASIDE DUNES

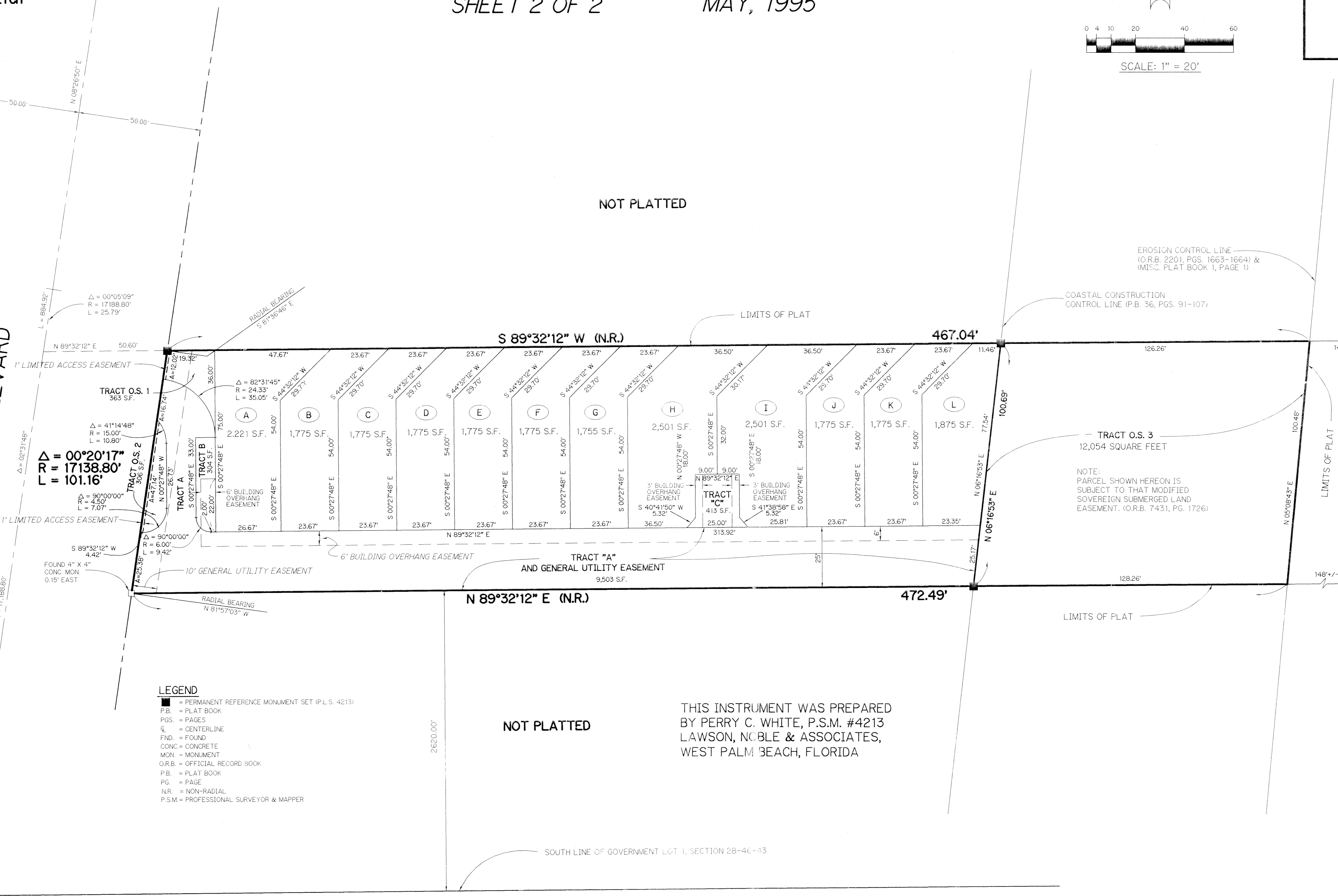
A PORTION OF GOVERNMENT LOT 1,
SECTION 28, TOWNSHIP 46 SOUTH,
RANGE 43 EAST, PALM BEACH COUNTY, FLORIDA
SHEET 2 OF 2
MAY, 1995



LOCATION SKETCH
NOT TO SCALE

NOT PLATTED

STATE ROAD A1A
(100' RIGHT-OF-WAY)
OCEAN BOULEVARD



- LEGEND**
- = PERMANENT REFERENCE MONUMENT SET (P.L.S. 4213)
 - P.B. = PLAT BOOK
 - PGS. = PAGES
 - CL = CENTERLINE
 - FND. = FOUND
 - CONC. = CONCRETE
 - MON. = MONUMENT
 - O.R.B. = OFFICIAL RECORD BOOK
 - P.B. = PLAT BOOK
 - PG. = PAGE
 - N.R. = NON-RADIAL
 - P.S.M. = PROFESSIONAL SURVEYOR & MAPPER

NOT PLATTED

THIS INSTRUMENT WAS PREPARED
BY PERRY C. WHITE, P.S.M. #4213
LAWSON, NOBLE & ASSOCIATES,
WEST PALM BEACH, FLORIDA

SOUTH LINE OF GOVERNMENT LOT 1, SECTION 28-46-43

N 89°32'12"E

T&E 6950

SUBDIVISION # SEASIDE DUNES
BOOK 77 PAGE 2
FLOOD MAP #
FLOOD ZONE
ZONING
SE ZIP CODE
PUB NAME CITY OF DELRAY