

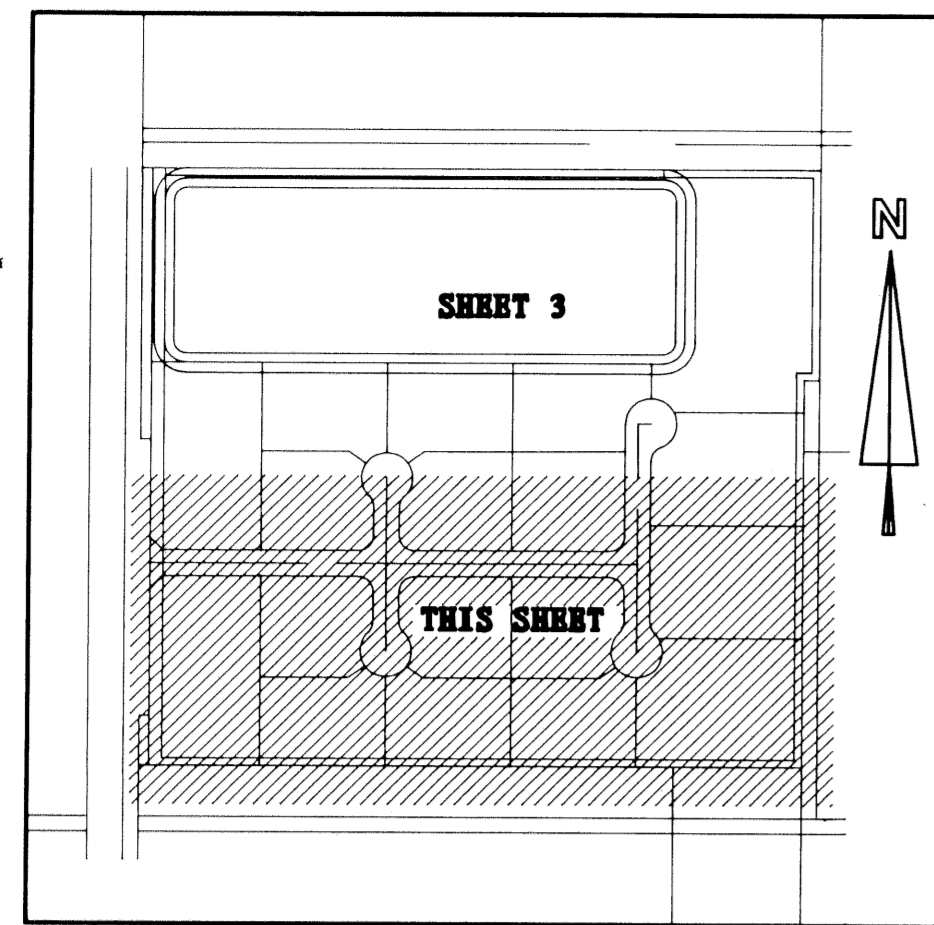
# 95TH AVENUE INDUSTRIAL PARK

LYING IN SECTION 31, TOWNSHIP 43 SOUTH, RANGE 42 EAST  
 VILLAGE OF ROYAL PALM BEACH, PALM BEACH COUNTY, FLORIDA  
 BEING A REPLAT OF A PORTION OF TRACTS 14 AND 17, BLOCK 8

FEBRUARY, 1996

RECORDED IN PLAT BOOK 2, PAGES 45 THROUGH 54

SHEET 2 OF 3



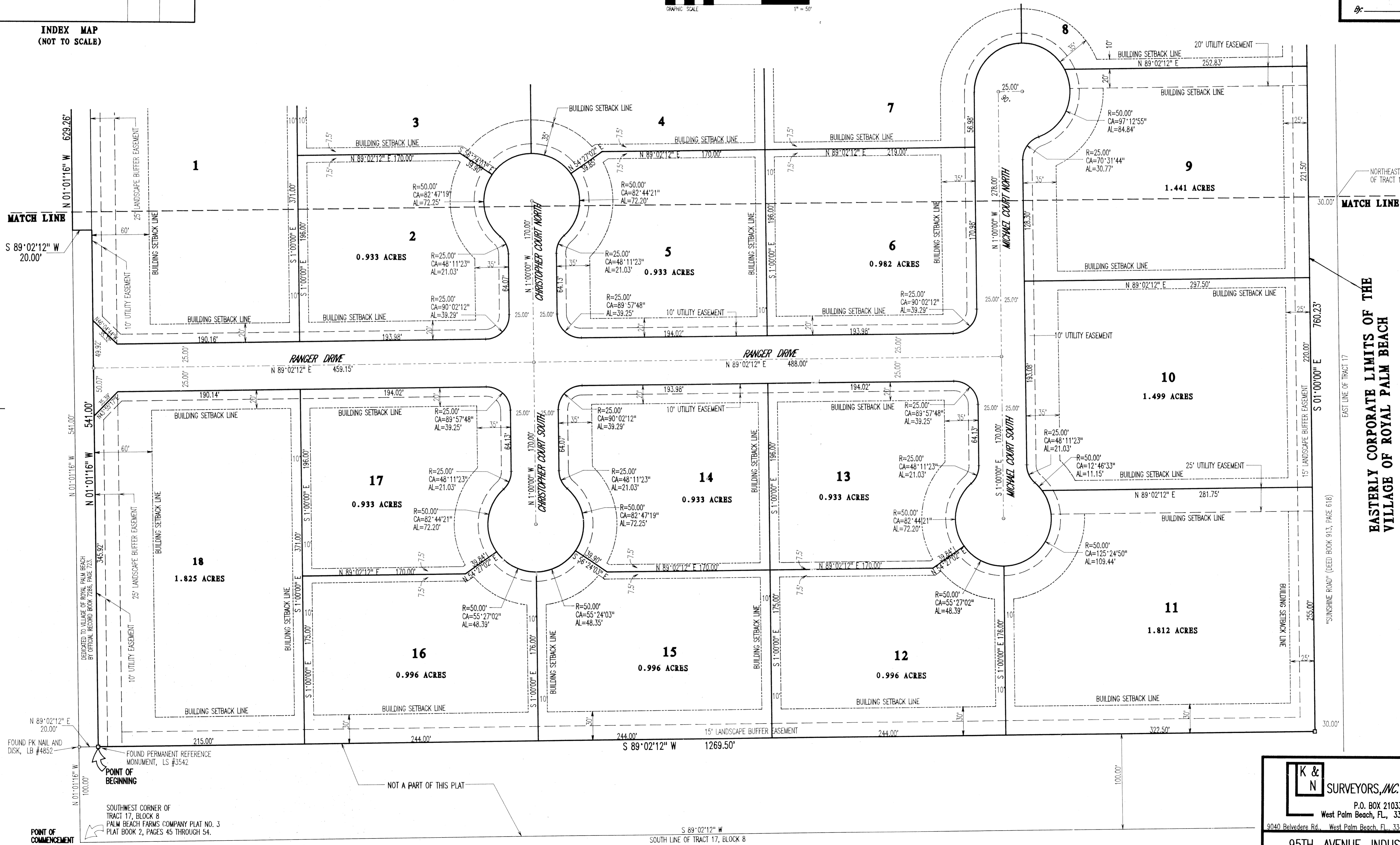
INDEX MAP  
(NOT TO SCALE)



14

STATE OF FLORIDA  
 COUNTY OF PALM BEACH

This Plat was filed for record at \_\_\_\_\_  
 M. this day of \_\_\_\_\_ 19\_\_\_\_  
 and duly recorded at Plat Book No. \_\_\_\_\_  
 on Pages \_\_\_\_\_ thru \_\_\_\_\_  
 Dorothy H. Wilton, Clerk of the Circuit Court  
 By \_\_\_\_\_ D.C.



EASTERLY CORPORATE LIMITS OF THE  
 VILLAGE OF ROYAL PALM BEACH

SUBDIVISION: 95TH AVENUE INDUSTRIAL PARK  
 BOOK: 77  
 PAGE: 14  
 FLOOD ZONE: B  
 FLOOD MAP: 150 A  
 QUAD: HL  
 ZONING: HL  
 ZIP CODE: 33411  
 PUD NAME: VILLAGE OF ROYAL PALM

**K & N SURVEYORS, INC.** LB #4852  
 P.O. BOX 210334  
 West Palm Beach, FL, 33421-0334  
 3040 Belvedere Rd., West Palm Beach, FL, 33411 Tele (407) 798-5005

95TH AVENUE INDUSTRIAL PARK