

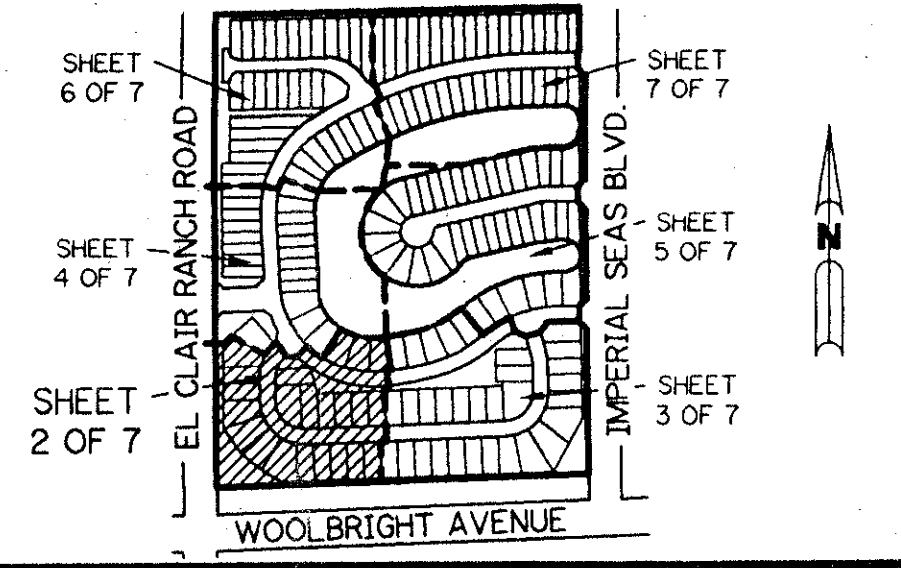
627-002

23

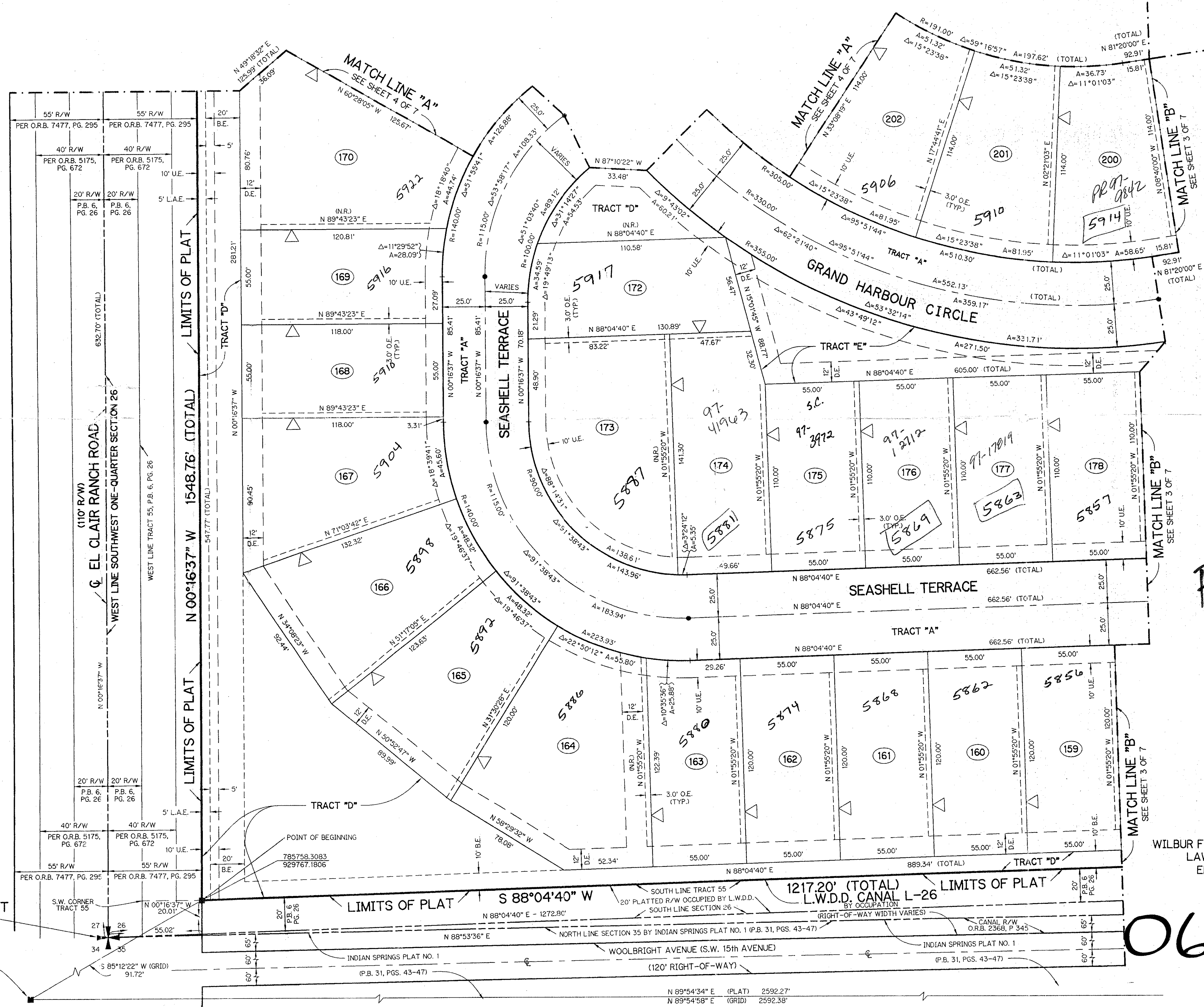
# MAJESTIC ISLES - PLAT TWO

BEING A REPLAT OF A PORTION OF TRACTS 52, 53, 54, 55, 56, AND 57 AND ASSOCIATED ABANDONED RIGHT-OF-WAY ACCORDING TO THE PLAT OF THE SUBDIVISION OF SECTION 26, TOWNSHIP 45 SOUTH, RANGE 42 EAST, AS RECORDED IN PLAT BOOK 6, PAGE 26, PUBLIC RECORDS OF PALM BEACH COUNTY, FLORIDA. LYING IN SECTION 26, TOWNSHIP 45 SOUTH, RANGE 42 EAST.

SHEET 2 OF 7 MARCH, 1995



KEY MAP  
N.T.S.

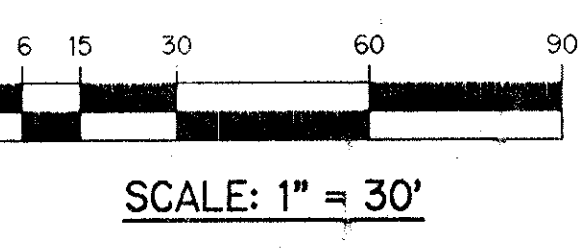


- LEGEND:**
- - FOUND PERMANENT REFERENCE MONUMENT, PLS #4213
  - - SET PERMANENT REFERENCE MONUMENT, PLS #4190
  - - PERMANENT CONTROL POINT, PLS #4190
  - Δ - DELTA ANGLE
  - A - ARC LENGTH
  - B.E. - BUFFER EASEMENT
  - D.E. - DRAINAGE EASEMENT
  - L.A.E. - LIMITED ACCESS EASEMENT
  - L.M.E. - LAKE MAINTENANCE EASEMENT
  - L.W.D.D. - LAKE WORTH DRAINAGE DISTRICT
  - N.R. - NOT RADIAL
  - N.T.S. - NOT TO SCALE
  - O.E. - OVERHANG EASEMENT
  - O.R.B. - OFFICIAL RECORD BOOK
  - P.B. - PLAT BOOK
  - PGS. - PAGES
  - P.S.M. - PROFESSIONAL SURVEYOR AND MAPPER
  - SUB. - SUBDIVISION OF SECTION 26 (P.B. 6, PG. 26)
  - R - RADIUS
  - R/W - RIGHT-OF-WAY
  - TYP. - TYPICAL
  - U.E. - UTILITY EASEMENT
  - △ - INDICATES ZERO LOT LINE
  - ⊗ - INDICATES COMMON LOT LINE

*PET 88-139B  
No SCHOOL IMPACT FEE  
5/3/3/K  
TH  
24*

THIS INSTRUMENT PREPARED BY  
WILBUR F. DIVINE, P.S.M. 4190, STATE OF FLORIDA  
LAWSON, NOBLE AND ASSOCIATES, INC.  
ENGINEERS PLANNERS SURVEYORS  
WEST PALM BEACH, FLORIDA

0627-002



SCALE: 1" = 30'

**POINT OF COMMENCEMENT**  
SOUTHWEST CORNER OF SECTION 26,  
TOWNSHIP 45 SOUTH, RANGE 42 EAST  
FOUND PALM BEACH COUNTY MONUMENT

FND. P.B. CO. MON. "FLIP"  
BRASS DISK IN CONC. MON.  
N. 793209.1080  
E. 937655.3620

SUBDIVISION MAJESTIC ISLES  
BOOK 77  
PAGE 23  
FLOOD ZONE  
QUAD 85  
ZONING RS  
ZIP CODE 33437  
SE 88-139  
PUD NAME MAJESTIC ISLES

Recorded  
6-20-96