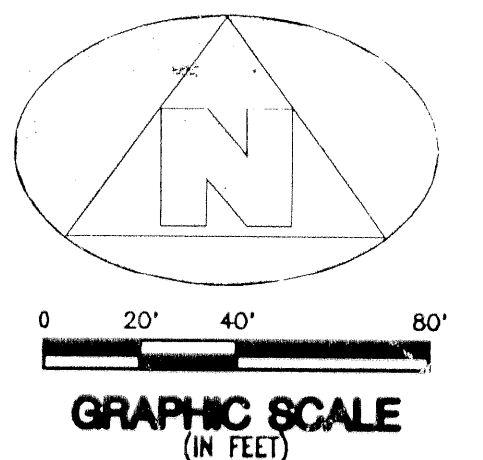
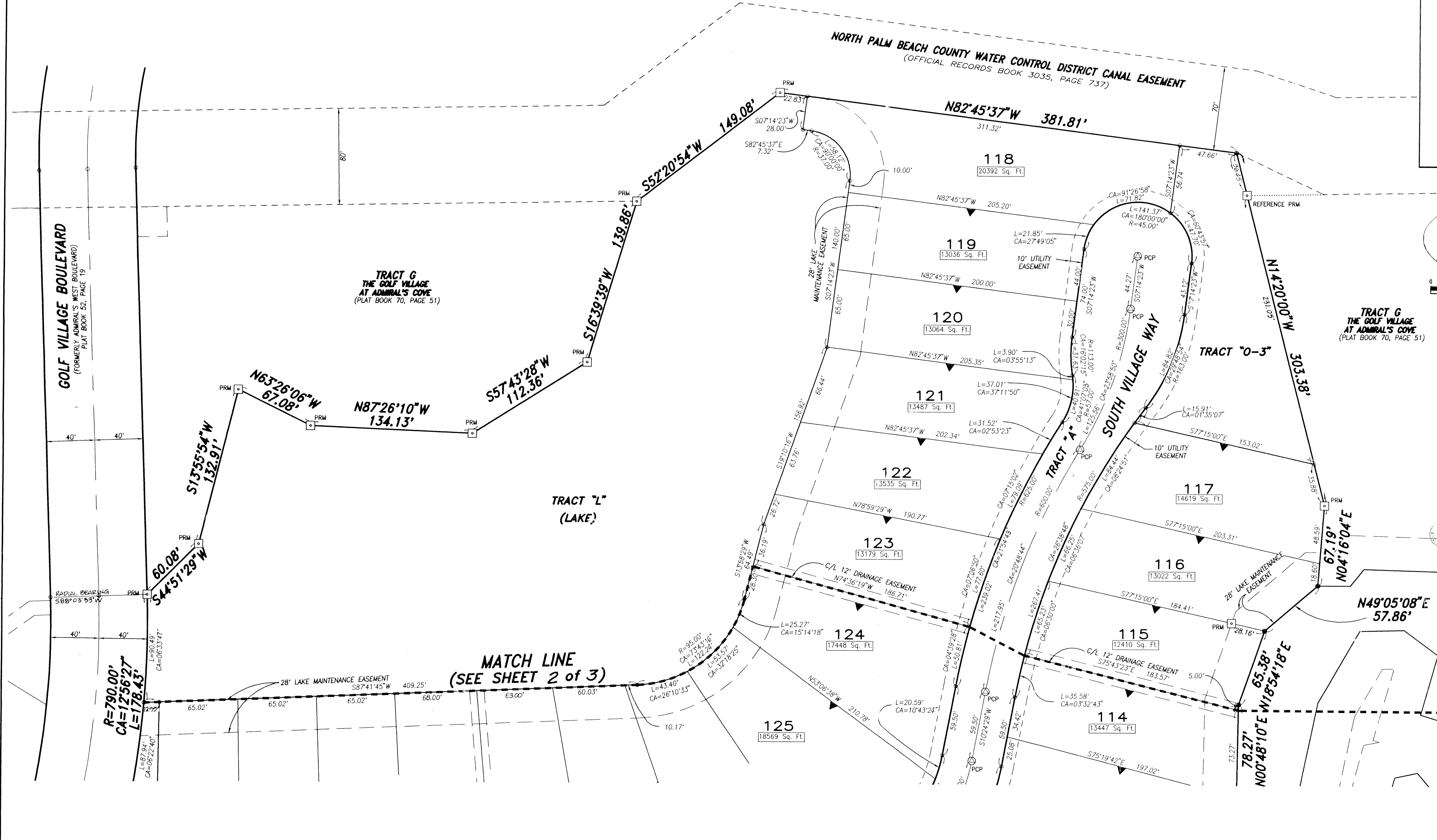


PARCEL C - GOLF VILLAGE AT ADMIRAL'S COVE

BEING A REPLAT OF PORTIONS OF PARCEL C, TRACT G, AND LAKE 19, THE GOLF VILLAGE AT ADMIRAL'S COVE, AS RECORDED IN PLAT BOOK 70, PAGE 51, PUBLIC RECORDS, PALM BEACH COUNTY, FLORIDA, AND LYING IN SECTION 13, TOWNSHIP 41 SOUTH, RANGE 42 EAST, TOWN OF JUPITER, PALM BEACH COUNTY FLORIDA



TRACT G THE GOLF VILLAGE AT ADMIRAL'S COVE (PLAT BOOK 70, PAGE 51)

TRACT "L" (LAKE)

TRACT "O-3"

MATCH LINE (SEE SHEET 2 of 3)

- SURVEYOR'S NOTES AND LEGEND:**
1. BEARINGS SHOWN OR STATED HEREON, ARE BASED ON, OR ARE RELATIVE TO THE PLAT OF PARCEL C - GOLF VILLAGE AT ADMIRAL'S COVE AS RECORDED IN PLAT BOOK 70, PG. 51
 2. IN THOSE INSTANCES WHERE UTILITY/DRAINAGE STRUCTURES ARE CONSTRUCTED IN CONFLICT WITH THE PLATTED PERMANENT CONTROL POINTS (P.C.P.) POSITION, STRADDLERS MONUMENTED AS PERMANENT CONTROL POINTS WILL BE SET TO REFERENCE THE PLATTED P.C.P. POSITION.
 3. SQ. FT. DENOTES SQUARE FEET
 4. C/L DENOTES A CENTERLINE
 5. DENOTES A SET #2424 PERMANENT REFERENCE MONUMENT (P.R.M.)
 6. DENOTES A SET #2424 PERMANENT CONTROL POINT (P.C.P.)
 7. DENOTES A FOUND #2424 PERMANENT REFERENCE MONUMENT (P.R.M.)
 8. DENOTES A FOUND #2424 PERMANENT CONTROL POINT (P.C.P.)
 9. ALL LOT LINES INTERSECTING CURVES ARE NON-RADIAL.

This instrument was prepared by Wm. R. Van Campen, R.L.S., in and for the offices of Bench Mark Land Surveying & Mapping, Inc., 4152 West Blue Heron Boulevard, Suite 121, Riviera Beach, Florida

BENCH MARK
Land Surveying and Mapping, Inc.
4152 West Blue Heron Blvd., Suite 121, Riviera Beach, FL 33404
Fax (407) 844-9859 Phone (407) 848-2102

RECORD PLAT			
PARCEL C - GOLF VILLAGE AT ADMIRAL'S COVE			
DWN	DJM	DATE	07/01/95
CKD	FILE	P168-A.dwg	SCALE 1" = 40'
W.O.#		P168	
SHEET		3 OF 3	

SUBDIVISION # AT ADMIRAL'S COVE
 BOOK 77 PAGE 48
 FLOOD MAP
 ZONING
 ZIP CODE
 TOWN OF JUPITER

TR 59