

# FLORAL LAKES PLAT ONE

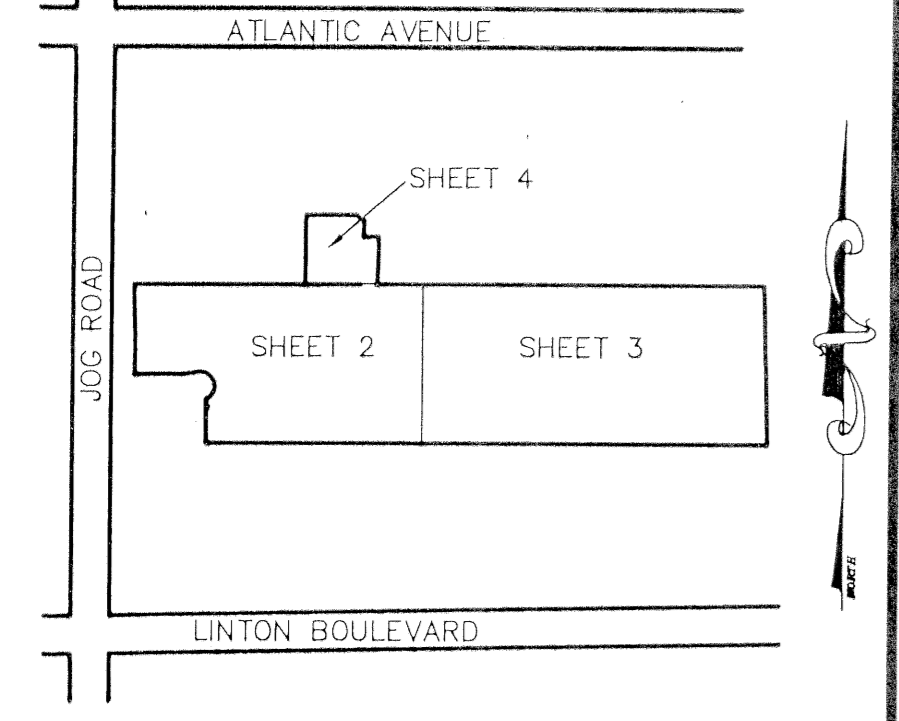
A PLANNED UNIT DEVELOPMENT  
BEING A PART OF THE NORTHEAST ONE-QUARTER OF  
SECTION 22, TOWNSHIP 46 SOUTH, RANGE 42 EAST,  
PALM BEACH COUNTY, FLORIDA

STATE OF FLORIDA  
COUNTY OF PALM BEACH  
THIS PLAT WAS FILED FOR  
RECORD AT \_\_\_\_\_ M.  
THIS \_\_\_\_\_ DAY OF \_\_\_\_\_  
A.D. 1996 AND DULY RECORDED  
IN PLAT BOOK \_\_\_\_\_ ON  
PAGES \_\_\_\_\_ AND \_\_\_\_\_

DOROTHY H. WILKEN  
CLERK CIRCUIT COURT

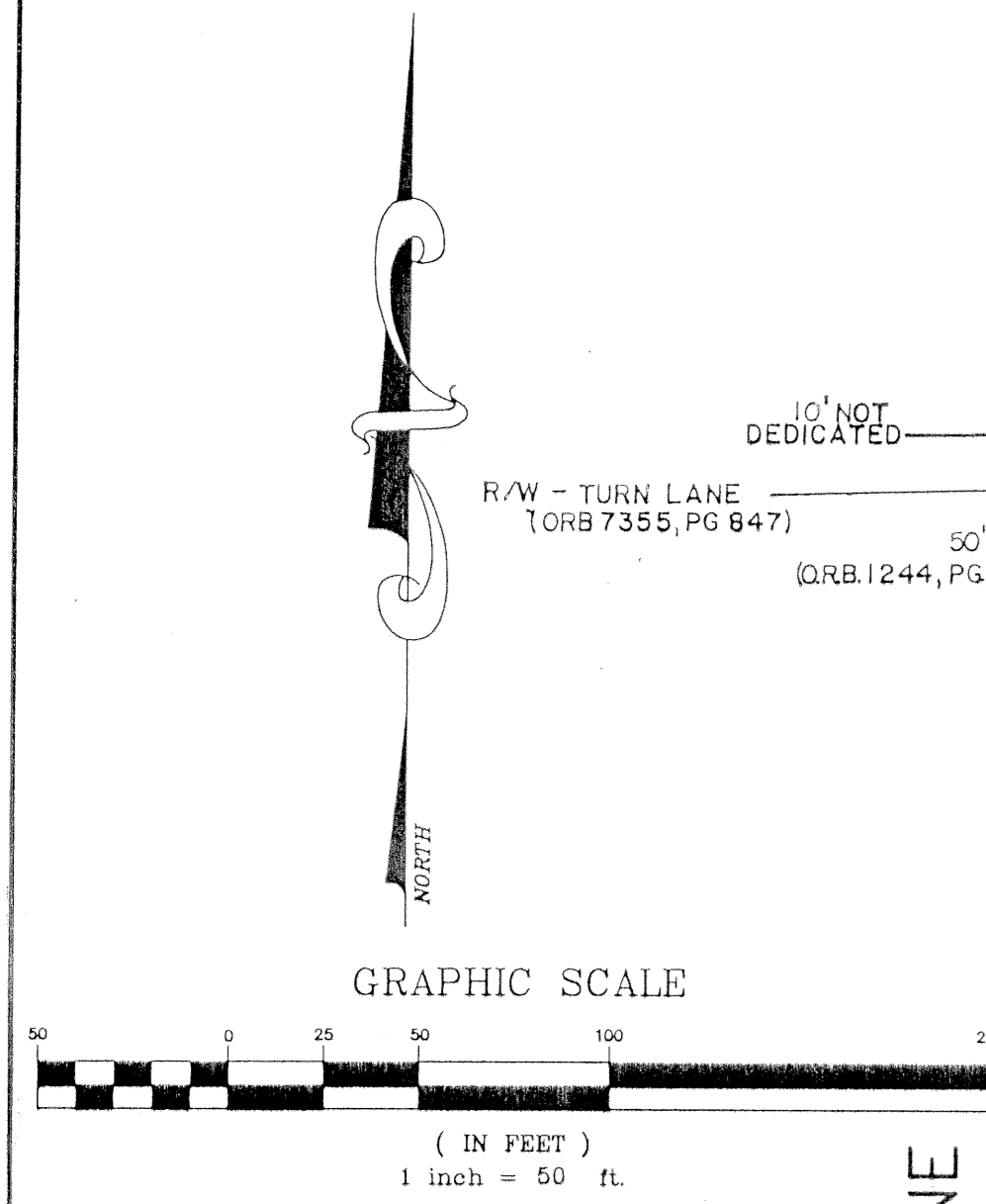
BY: \_\_\_\_\_  
DEPUTY CLERK

SHEET 2 OF 4



PREPARED BY  
DAVID P. LINDLEY  
OF  
**CAULFIELD and WHEELER, INC.**  
ENGINEERS - PLANNERS - SURVEYORS  
7301-A WEST PALMETTO PARK ROAD, SUITE 100A  
BOCA RATON, FLORIDA 33433 - (407)392-1991  
JUNE - 1994

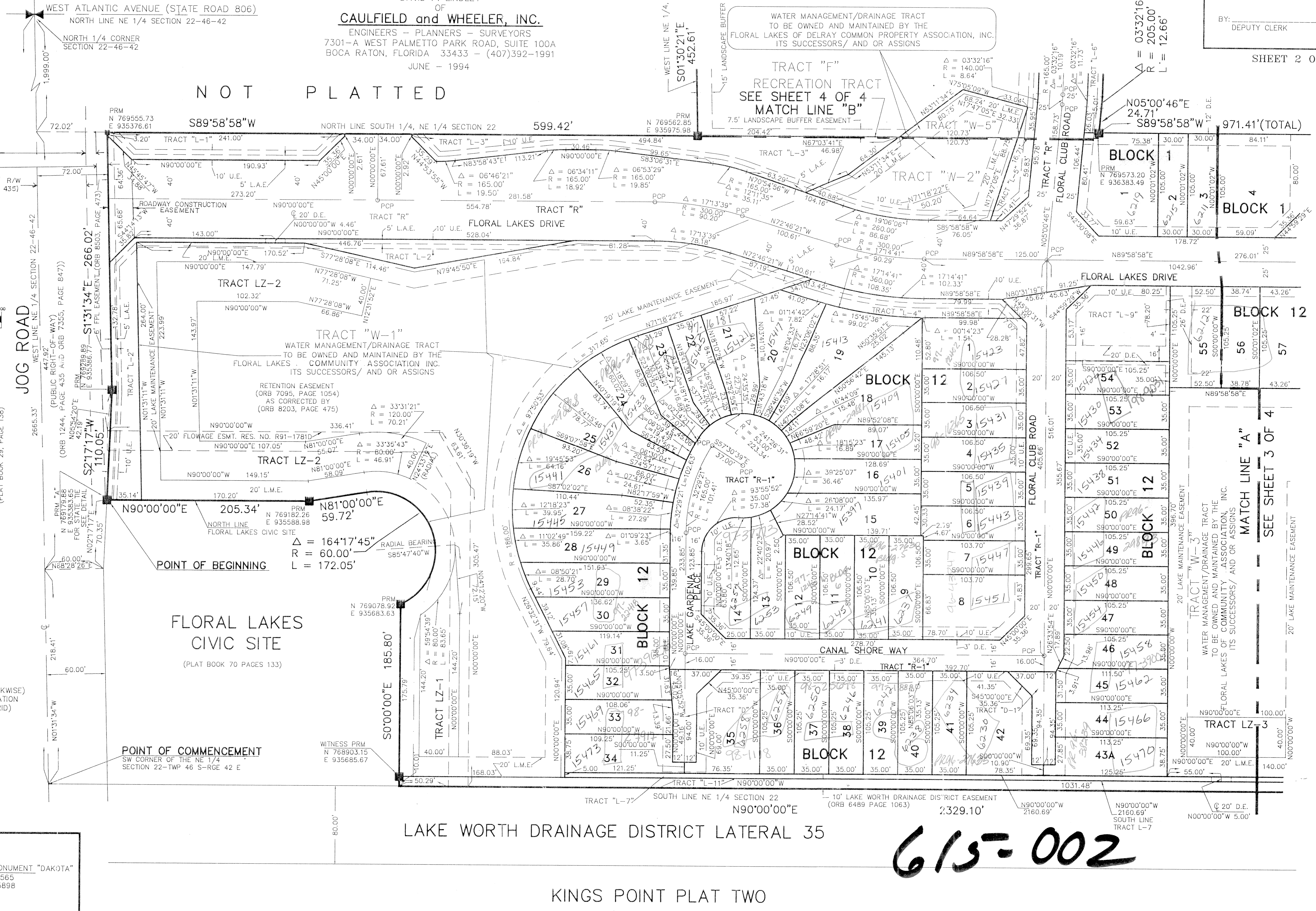
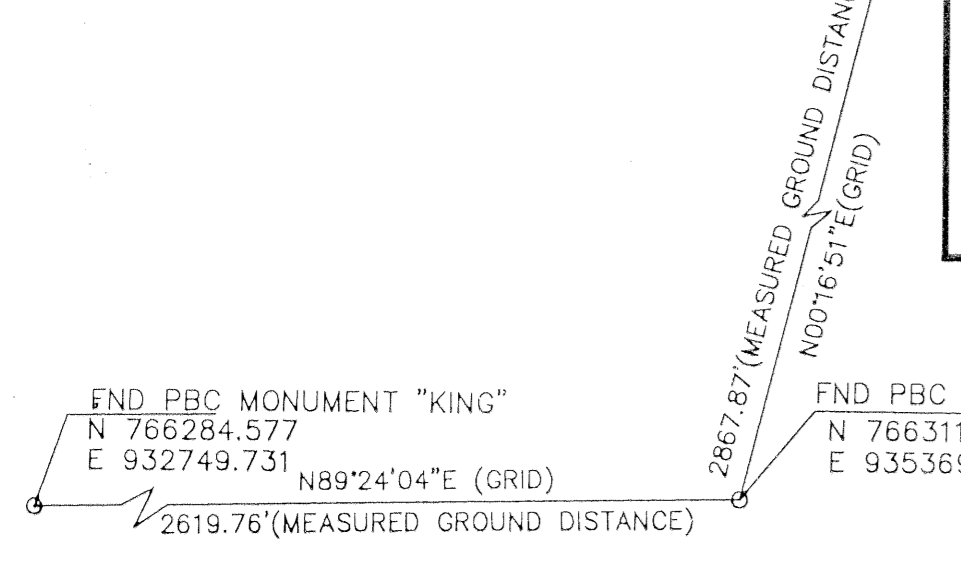
NOT PLATTED



### NOTES COORDINATES, BEARINGS AND DISTANCES

COORDINATES SHOWN ARE GRID  
DATUM = NAD 83 1990 ADJUSTMENT  
ZONE = FLORIDA EAST  
LINEAR UNIT = US SURVEY FEET  
COORDINATE SYSTEM 1983 STATE PLANE  
TRANSVERSE MERCATOR PROJECTION  
ALL DISTANCES ARE GROUND  
SCALE FACTOR = 1.0000313  
GROUND DISTANCE X SCALE FACTOR = GRID DISTANCE  
N90°00'00"E (PLAT BEARING) (COUNTER CLOCKWISE)  
00°39'50" = BEARING ROTATION  
N89°20'10"E (GRID BEARING) (PLAT TO GRID)

### STATE PLANE TIE DETAIL n.t.s.



LAKE WORTH DRAINAGE DISTRICT LATERAL 35

KINGS POINT PLAT TWO  
(PLAT BOOK 29, PAGE 139)

615-002

BOOK 97 PAGE 79  
FLOOD ZONE 0 FLOOD MAP # 215A  
QUAD # 37 ZONING RM  
SE 91-40 ZIP CODE 33445  
Pub. Date Floral Lakes  
8-1-96