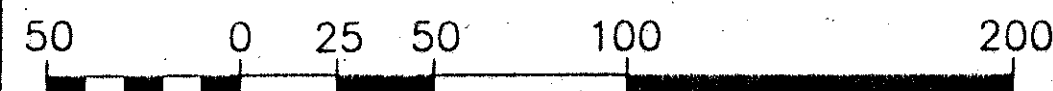


GRAPHIC SCALE

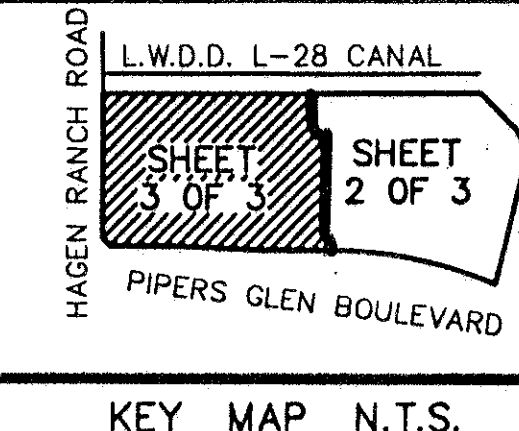


(IN FEET)
1 inch = 50 ft.

PREPARED BY
DAVID P. LINDLEY
OF
CAULFIELD AND WHEELER, INC.
ENGINEERS - PLANNERS - SURVEYORS
7301-A WEST PALMETTO PARK ROAD, SUITE 100A
BOCA RATON, FLORIDA 33433 - (407)392-1991
FEBRUARY - 1996

PIPERS GLEN PODS "F" AND "H" 0298-021

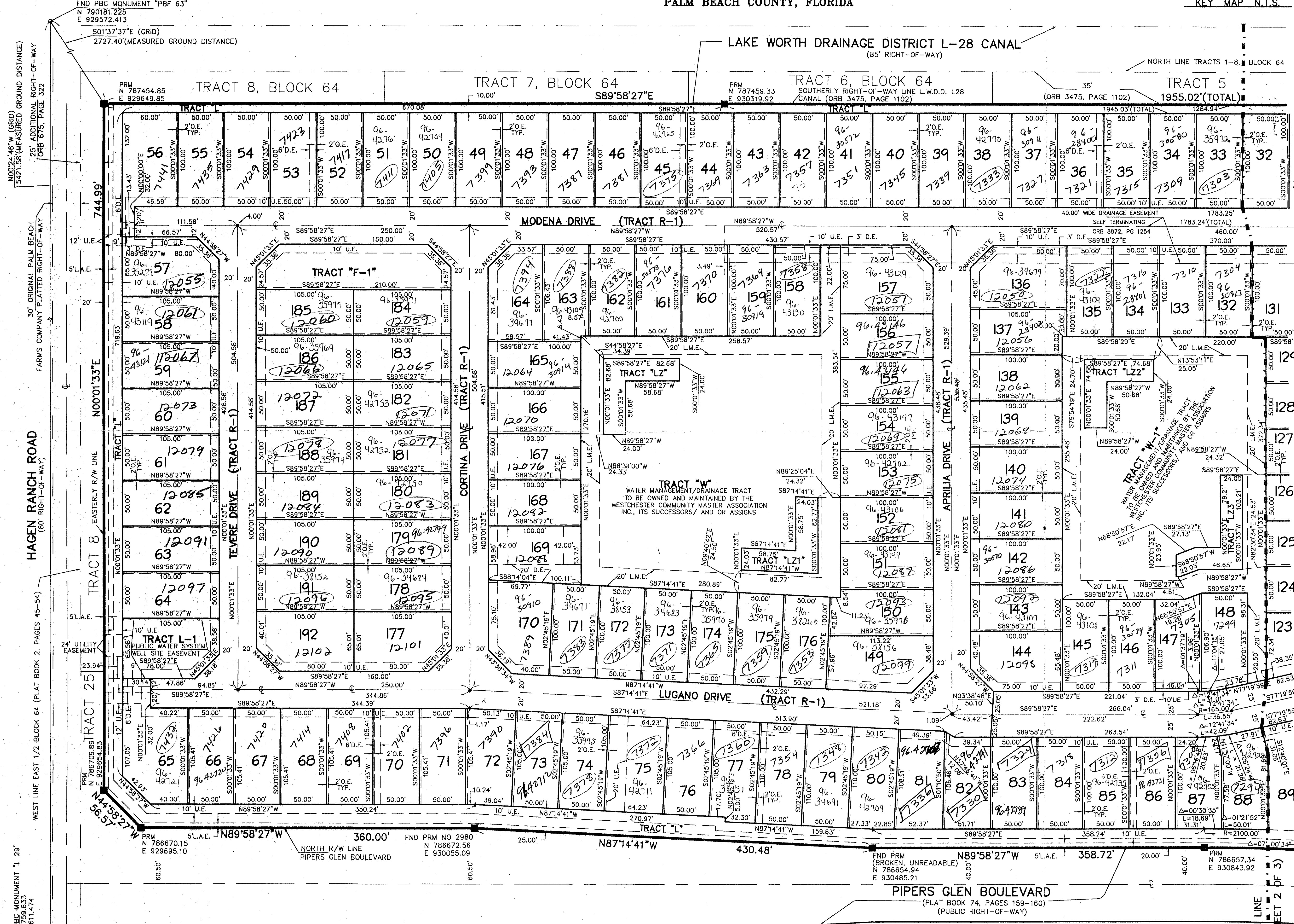
A PLANNED UNIT DEVELOPMENT
BEING A REPLAT OF A PORTION OF TRACTS 2 THROUGH 8 AND TRACTS 25 THROUGH 31, BLOCK 64,
PALM BEACH FARMS COMPANY PLAT NO. 3, AS RECORDED IN PLAT BOOK 2, PAGES 45 THROUGH 54 OF THE PUBLIC
RECORDS OF PALM BEACH COUNTY, FLORIDA, LYING IN SECTION 4, TOWNSHIP 46 SOUTH, RANGE 42 EAST,
PALM BEACH COUNTY, FLORIDA



100

STATE OF FLORIDA
COUNTY OF PALM BEACH
THIS PLAT WAS FILED FOR
RECORD AT _____ M.
THIS _____ DAY OF _____
A.D. 1996 AND DULY RECORDED
IN PLAT BOOK _____ ON
PAGES _____ AND _____
DOROTHY H. WILKEN
CLERK CIRCUIT COURT
BY: _____
DEPUTY CLERK

SHEET 3 OF 3



0298-021

SUBDIVISION *Pipers Glen Pods
BLOCK 77
FLOOD ZONE B
QUAD # 51
SE 80-212
R/D NAME PIPERS GLEN BOULEVARD

PAGE 100
FLOOD MAP #200A
ZONING RT
ZIP CODE 33444

FND PBC MONUMENT "L 29"
N 786709.89
E 929654.83

FND PRM NO 2980
N 786672.56
E 930055.09

FND PRM
(BROKEN, UNREADABLE)
N 786654.94
E 930485.21

PRM
N 786657.34
E 930843.92

BLOCK 64
PALM BEACH FARMS COMPANY PLAT NO.3
(PLAT BOOK 2, PAGES 45-54)

MATCH LINE
(SEE SHEET 2 OF 3)