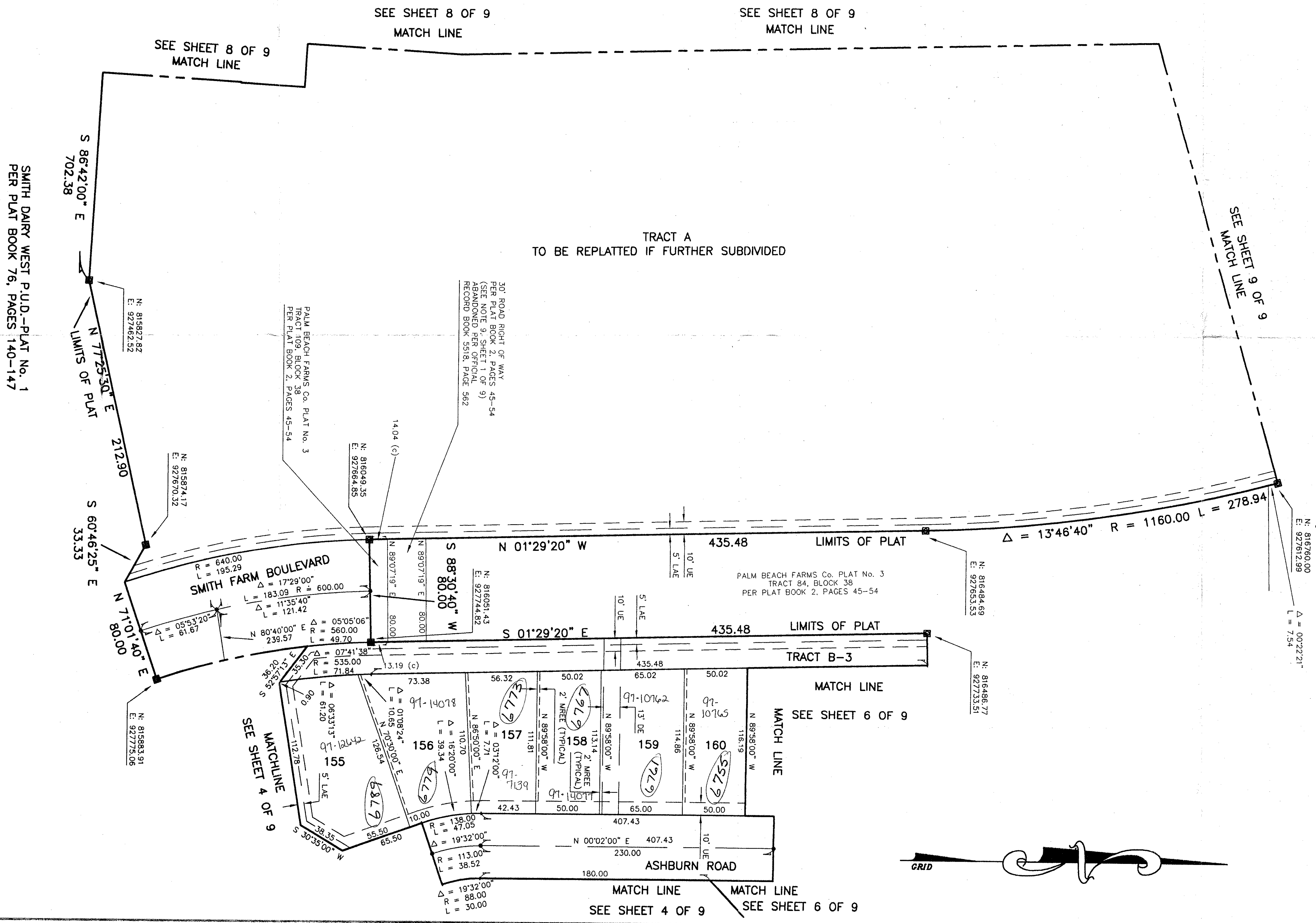


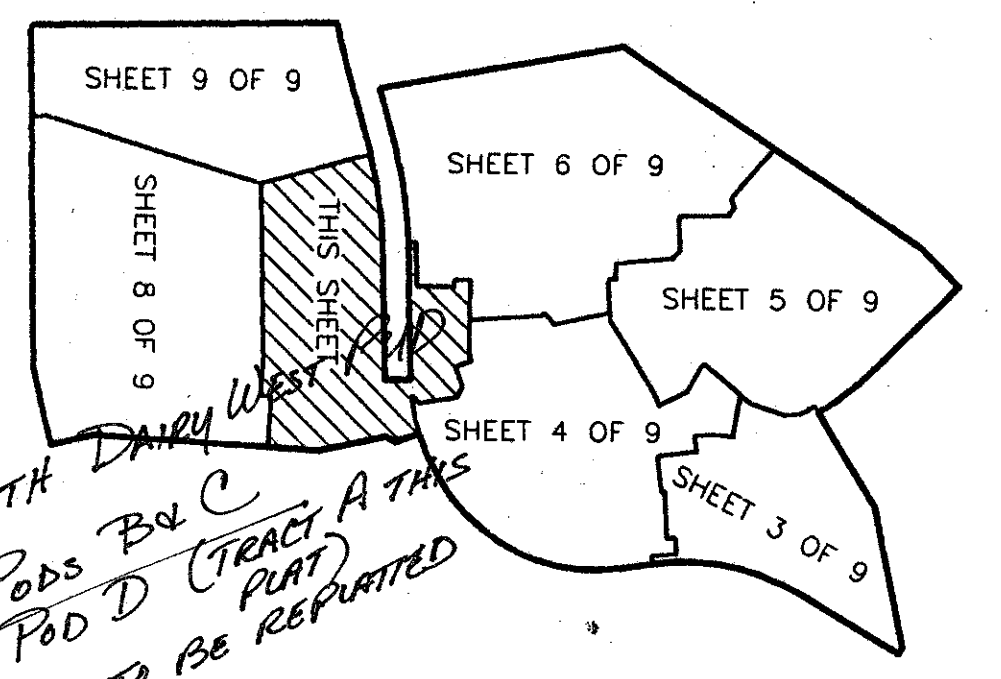
SMITH DAIRY WEST P.U.D.-PLAT No. 3  
BEING A REPLAT OF PART OF BLOCK 38 OF PALM BEACH FARMS  
COMPANY PLAT No. 3, AS RECORDED IN PLAT BOOK 2, PAGES  
45 THROUGH 54 OF THE PUBLIC RECORDS OF PALM BEACH COUNTY, FLORIDA  
IN PART OF SECTIONS 4 AND 5, TOWNSHIP 45 SOUTH, RANGE 42 EAST,  
PALM BEACH COUNTY, FLORIDA  
SHEET 7 OF 9 SHEETS  
MARCH 1996

PET. 94-77  
ALOC. #0001  
5/2/2/I

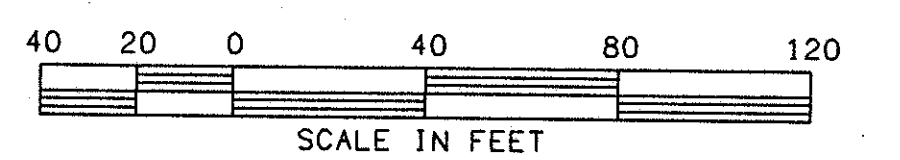
0653-003



SHEET INDEX



- LEGEND:
- = PERMANENT REFERENCE MONUMENT "P.L.S. 4828"
  - = PERMANENT CONTROL POINT "P.C.P. 4828"
  - R = RADIUS
  - L = ARC LENGTH
  - Δ = DELTA (CENTRAL ANGLE)
  - PC = POINT OF CURVATURE
  - PT = POINT OF TANGENCY
  - PSM = PROFESSIONAL SURVEYOR & MAPPER
  - PLS = PROFESSIONAL LAND SURVEYOR
  - UE = UTILITY EASEMENT
  - DE = DRAINAGE EASEMENT
  - LME = LAKE MAINTENANCE EASEMENT
  - N = NORTHING (GRID)
  - E = EASTING (GRID)
  - (C) = CALCULATED
  - (R) = RADIAL
  - MREE = MAINTENANCE AND ROOF EAVE EASEMENT
  - LAE = LIMITED ACCESS EASEMENT



SCALE: 1" = 40'	<b>NICK MILLER, INC.</b> Surveying Planning & Development Consultants	DRAWN BY:
DATE: MARCH 1996		CHK:
<b>SMITH DAIRY WEST P.U.D.-PLAT No. 3</b>		
2560 RCA Blvd. • Suite 105 Palm Beach Gardens, Florida 33410 (407) 827-5200		DRAWING NUM. <b>94014AF</b>

SUBDIVISION SMITH Dairy West  
BOOK 77 PAGE 132  
FLOOD ZONE B FLOOD MAP #170A  
QUAD #49 ZONING PUD  
SE 74-77 ZIP CODE 33467  
PUD NAME SMITH DAIRY WEST

Revised  
10-7-96