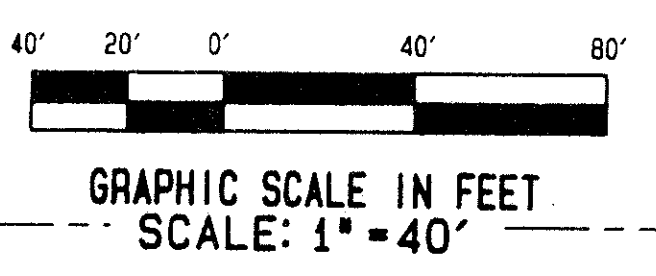
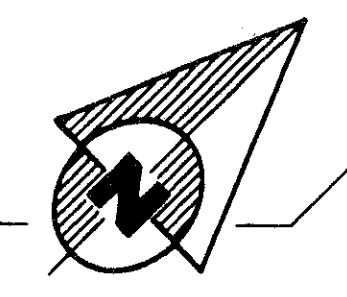


0659-001

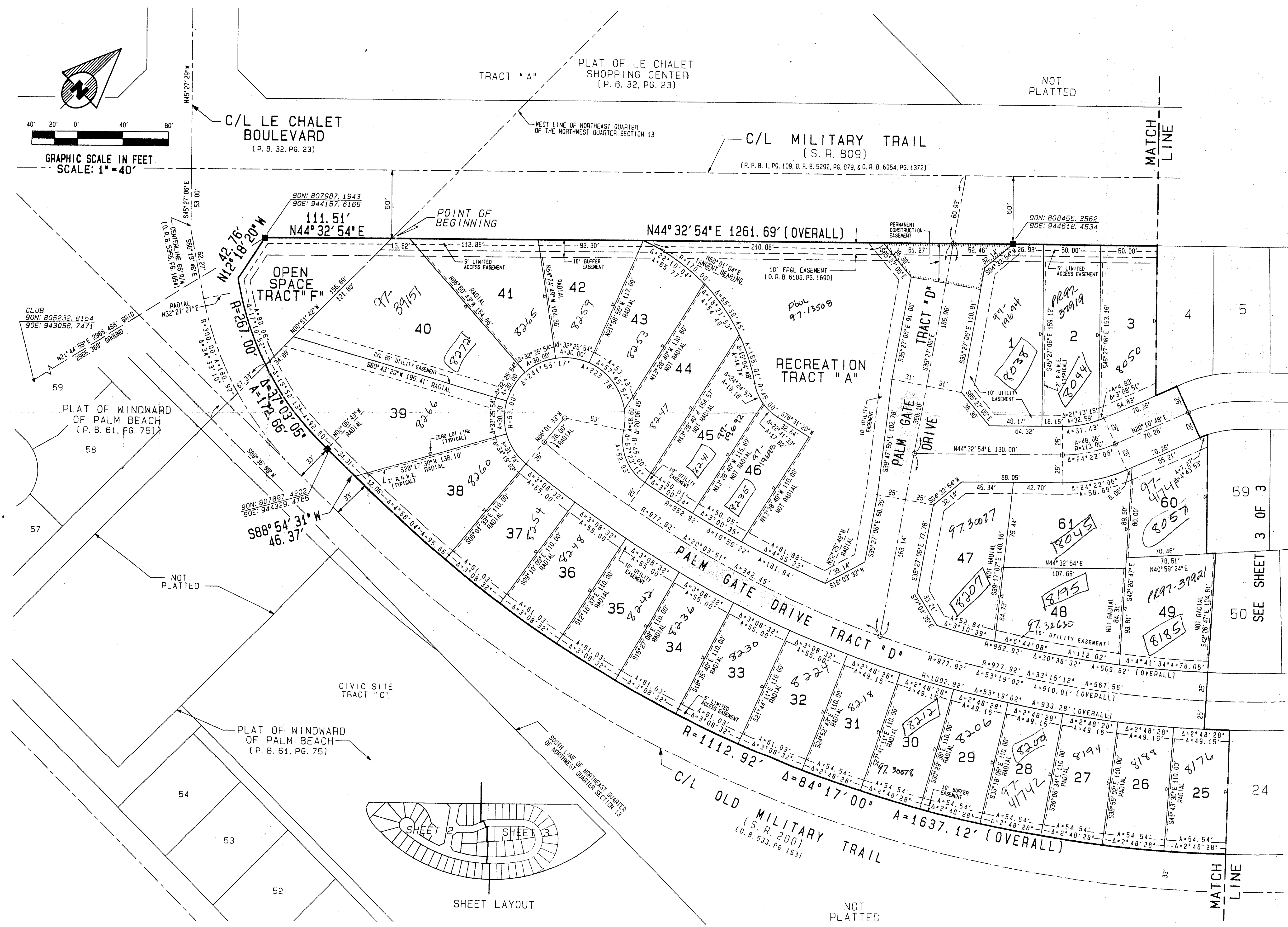
141

GATEWAY PALMS

A PORTION OF THE NORTHEAST QUARTER OF THE NORTHWEST QUARTER OF SECTION 13,
TOWNSHIP 45 SOUTH, RANGE 42 EAST, PALM BEACH COUNTY, FLORIDA.
DECEMBER 1995
SHEET 2 OF 3



GRAPHIC SCALE IN FEET
SCALE: 1" = 40'



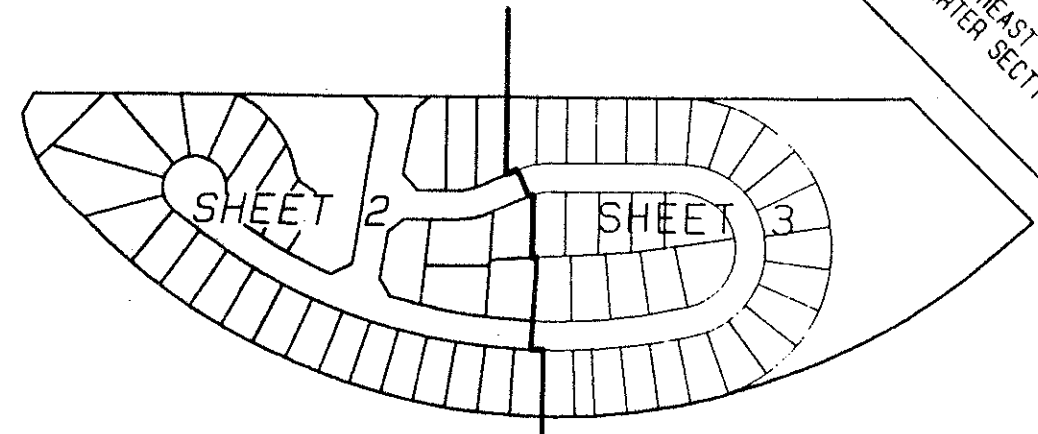
NOTES:
COORDINATES, BEARINGS, & DISTANCES
COORDINATES SHOWN ARE GRID
BEARINGS SHOWN ARE GRID
DATUM = NAD 83 1990 ADJUSTMENT
ZONE = FLORIDA EAST
LINEAR UNIT = US SURVEY FEET
COORDINATE SYSTEM = 1983 STATE PLANE
TRANSVERSE MERCATOR PROJECTION
ALL DISTANCES ARE GROUND
SCALE FACTOR = 1.00003888
GROUND DISTANCE x SCALE FACTOR = GRID DISTANCE

LEGEND:
P.B. PLAT BOOK
P.R.M. PERMANENT REFERENCE MONUMENT
Δ DELTA ANGLE
C CHORD BEARING
O.F. OFFICIAL RECORD BOOK
D.B. DEED BOOK
R.O.W. RIGHT-OF-WAY CENTERLINE
C.L. CENTERLINE
R.R.M.E. ROOF OVERHANG AND RECIPROCAL MAINTENANCE EASEMENTS
DENOTES SET P.R.M. UNLESS OTHERWISE NOTED
DENOTES FOUND P.R.M. AS NOTED
DENOTES SET PERMANENT CONTROL POINT (P.C.P.)
DENOTES ZERO LOT LINE ON THE SIDE OF THE LINE SHOWN

0659-001

SUBMISSION: GATEWAY PALMS
BOOK 77 PAGE 141
FLOOD MAP # 190B
ZONING RTA
QUAD # 34
ZIP CODE 33434
PUD NAME GATEWAY PALM

Revised 1/96



SHEET LAYOUT

Dailey-Fotorey, Inc.
land surveyors, planners, engineers
5050 10th Avenue North, Suite 8 - Lake Worth, Florida 33463-2022
Phone 407/988-8787