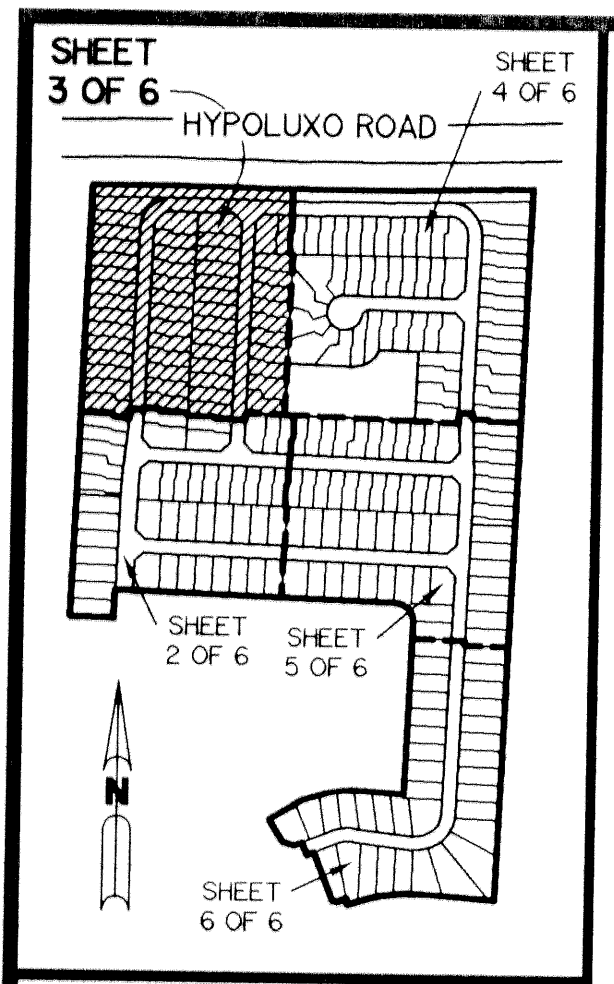


# NAUTICA SOUND P.U.D. - PLAT TWO

A PARCEL OF LAND LYING IN SECTION 7,  
TOWNSHIP 45 SOUTH, RANGE 43 EAST, CITY OF BOYNTON BEACH,  
PALM BEACH COUNTY, FLORIDA.

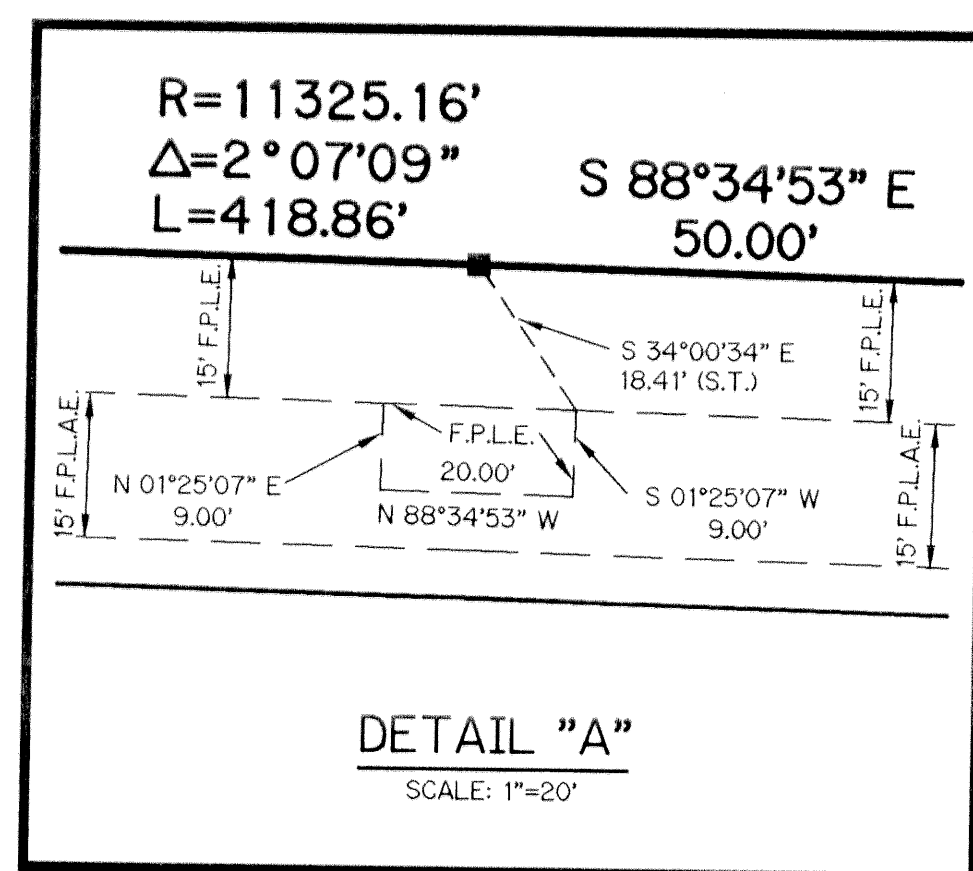
SHEET 3 OF 6 JANUARY, 1996

A PLANNED UNIT DEVELOPMENT

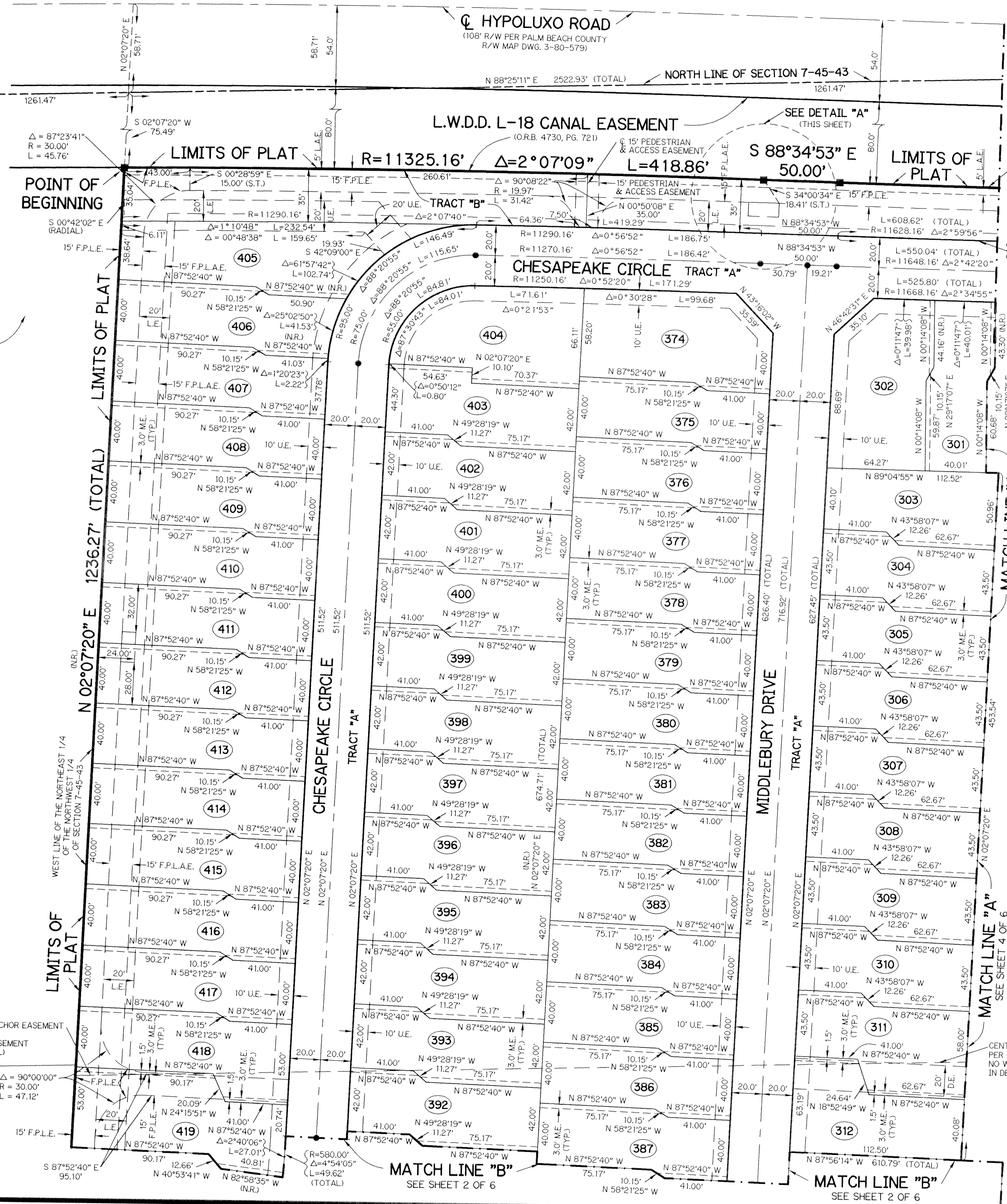


KEY MAP  
N.T.S.

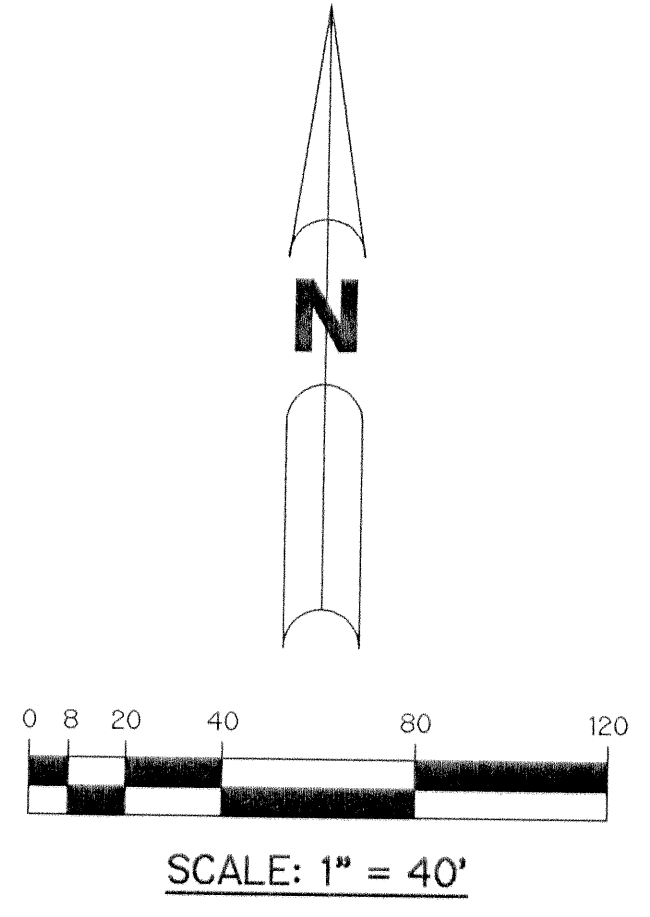
POINT OF COMMENCEMENT  
NORTHWEST CORNER OF SECTION 7,  
TOWNSHIP 45 SOUTH, RANGE 43 EAST  
FOUND PALM BEACH COUNTY BRASS  
DISK IN CONCRETE MONUMENT AND  
FOUND RAIL ROAD SPIKE (1.10' SOUTH)



- LEGEND:**
- - PERMANENT REFERENCE MONUMENT, PLS #4190
  - - FOUND PERMANENT REFERENCE MONUMENT, PLS #4190
  - - PERMANENT CONTROL POINT, PLS #4190
  - △ - DELTA ANGLE
  - - CENTERLINE
  - D.E. - DRAINAGE EASEMENT
  - F.P.L.E. - FLORIDA POWER & LIGHT EASEMENT
  - F.P.L.A.E. - FLORIDA POWER & LIGHT AERIAL EASEMENT
  - L - ARC LENGTH
  - L.A.E. - LIMITED ACCESS EASEMENT
  - L.E. - LANDSCAPE EASEMENT
  - L.M.A.E. - LAKE MAINTENANCE ACCESS EASEMENT
  - L.M.E. - LAKE MAINTENANCE EASEMENT
  - L.W.D.D. - LAKE WORTH DRAINAGE DISTRICT
  - M.E. - DRAINAGE, MAINTENANCE AND OVERHANG EASEMENT
  - N.R. - NOT RADIAL
  - N.T.S. - NOT TO SCALE
  - O.R.B. - OFFICIAL RECORD BOOK
  - P.B. - PLAT BOOK
  - P.G.S. - PAGES
  - PLS - PROFESSIONAL LAND SURVEYOR
  - P.S.M. - PROFESSIONAL SURVEYOR AND MAPPER
  - R - RADIUS
  - R/W - RIGHT-OF-WAY
  - S.T. - SURVEY TIE
  - U.E. - UTILITY EASEMENT



(TOTAL)  
R=11593.16'  
Δ=2°59'56"  
L=606.79'



THIS INSTRUMENT PREPARED BY  
WILBUR F. DIVINE, P.S.M. 4190, STATE OF FLORIDA  
LAWSON, NOBLE AND WEBB, INC.  
ENGINEERS PLANNERS SURVEYORS  
WEST PALM BEACH, FLORIDA