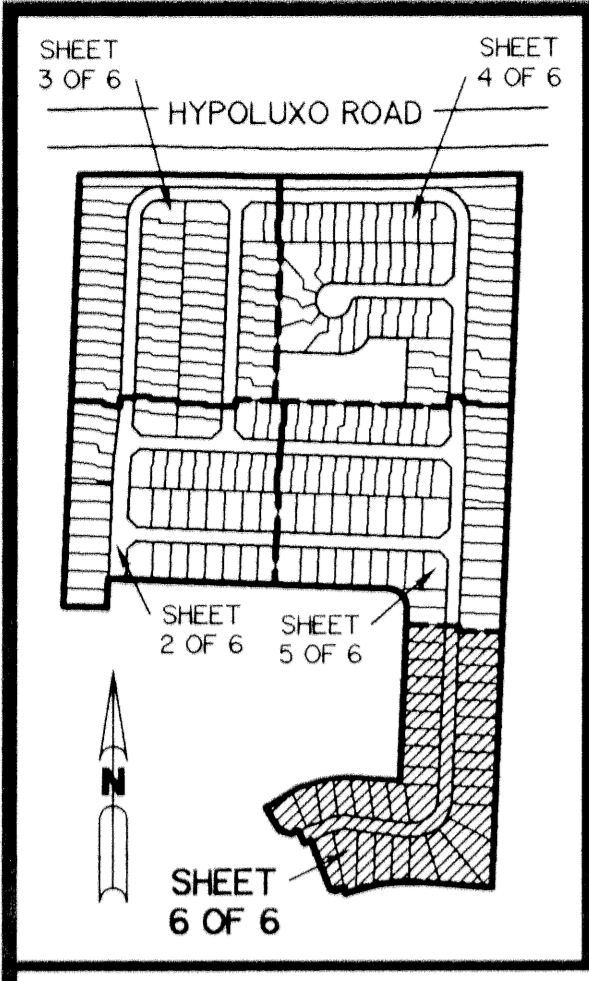


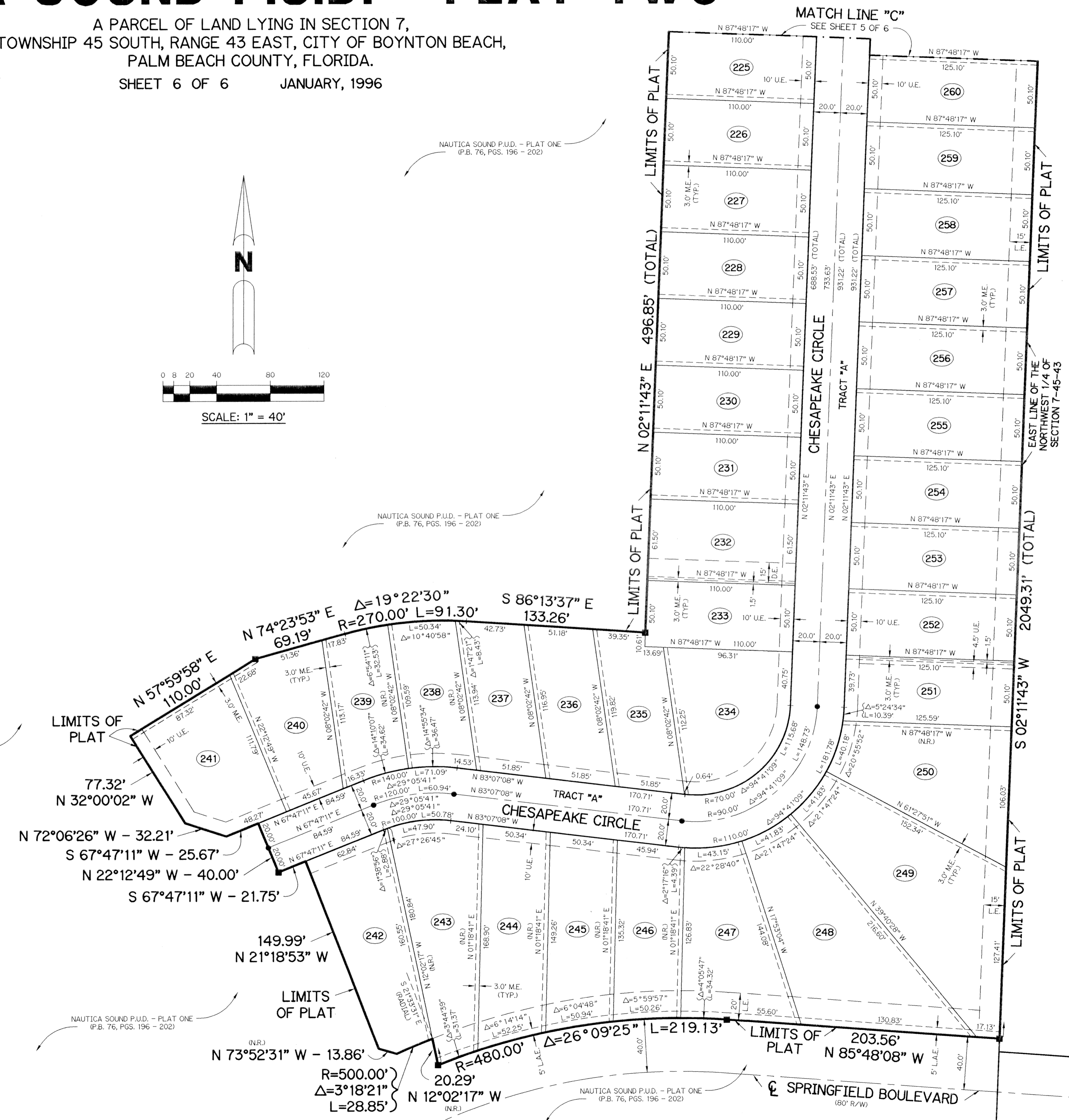
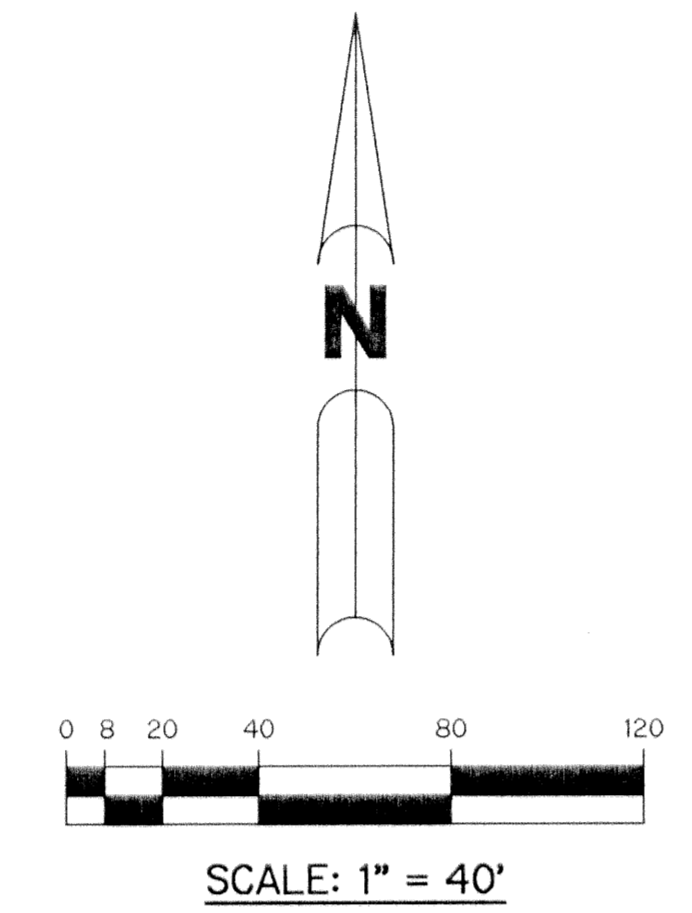
NAUTICA SOUND P.U.D. - PLAT TWO

A PLANNED UNIT DEVELOPMENT
A PARCEL OF LAND LYING IN SECTION 7,
TOWNSHIP 45 SOUTH, RANGE 43 EAST, CITY OF BOYNTON BEACH,
PALM BEACH COUNTY, FLORIDA.
SHEET 6 OF 6 JANUARY, 1996



KEY MAP
N.T.S.

- LEGEND:**
- - PERMANENT REFERENCE MONUMENT, PLS #4190
 - - FOUND PERMANENT REFERENCE MONUMENT, PLS #4190
 - - PERMANENT CONTROL POINT, PLS #4190
 - △ - DELTA ANGLE
 - ⊕ - CENTERLINE
 - ⊖ - DRAINAGE EASEMENT
 - F.P.L.E. - FLORIDA POWER & LIGHT EASEMENT
 - L - ARC LENGTH
 - L.A.E. - LIMITED ACCESS EASEMENT
 - L.E. - LANDSCAPE EASEMENT
 - L.M.A.E. - LAKE MAINTENANCE ACCESS EASEMENT
 - L.M.E. - LAKE MAINTENANCE EASEMENT
 - L.W.D.D. - LAKE WORTH DRAINAGE DISTRICT
 - M.E. - DRAINAGE, MAINTENANCE AND OVERHANG EASEMENT
 - NR. - NOT RADIAL
 - N.T.S. - NOT TO SCALE
 - O.R.B. - OFFICIAL RECORD BOOK
 - P.B. - PLAT BOOK
 - PGS. - PAGES
 - PLS - PROFESSIONAL LAND SURVEYOR
 - P.S.M. - PROFESSIONAL SURVEYOR AND MAPPER
 - R - RADIUS
 - R/W - RIGHT-OF-WAY
 - S.T. - SURVEY TIE
 - U.E. - UTILITY EASEMENT



SUBDIVISION - Nautica Sound
BOOK - 77
PAGE - 158
FLOOD ZONE -
ZONING -
QUAD -
SE -
PUD NAME - City of Boynton Beach

THIS INSTRUMENT PREPARED BY
WILBUR F. DIVINE, P.S.M. 4190, STATE OF FLORIDA
LAWSON, NOBLE AND WEBB, INC.
ENGINEERS PLANNERS SURVEYORS
WEST PALM BEACH, FLORIDA

CLUB MEADOWS,
PHASE - III
(P.B. 55, PG. 111)

CLUB MEADOWS,
PHASE - III
(P.B. 55, PG. 111)