

VINTAGE OAKS - REPLAT OF LOTS 29 AND 30

BEING A REPLAT OF A PORTION OF VINTAGE OAKS
 PART OF THE POLO CLUB P.U.D., (P.B. 74, PGS. 124 - 125)
 LYING IN SECTION 26, TOWNSHIP 46 SOUTH, RANGE 42 EAST
 PALM BEACH COUNTY, FLORIDA.

AUGUST 1996

SHEET 2 OF 2

436-042

160

STATE OF FLORIDA
 COUNTY OF PALM BEACH

This plat was filed for record at _____, this _____ day of _____, 1996, and duly recorded in Plat Book No. _____ on Pages _____ thru _____.

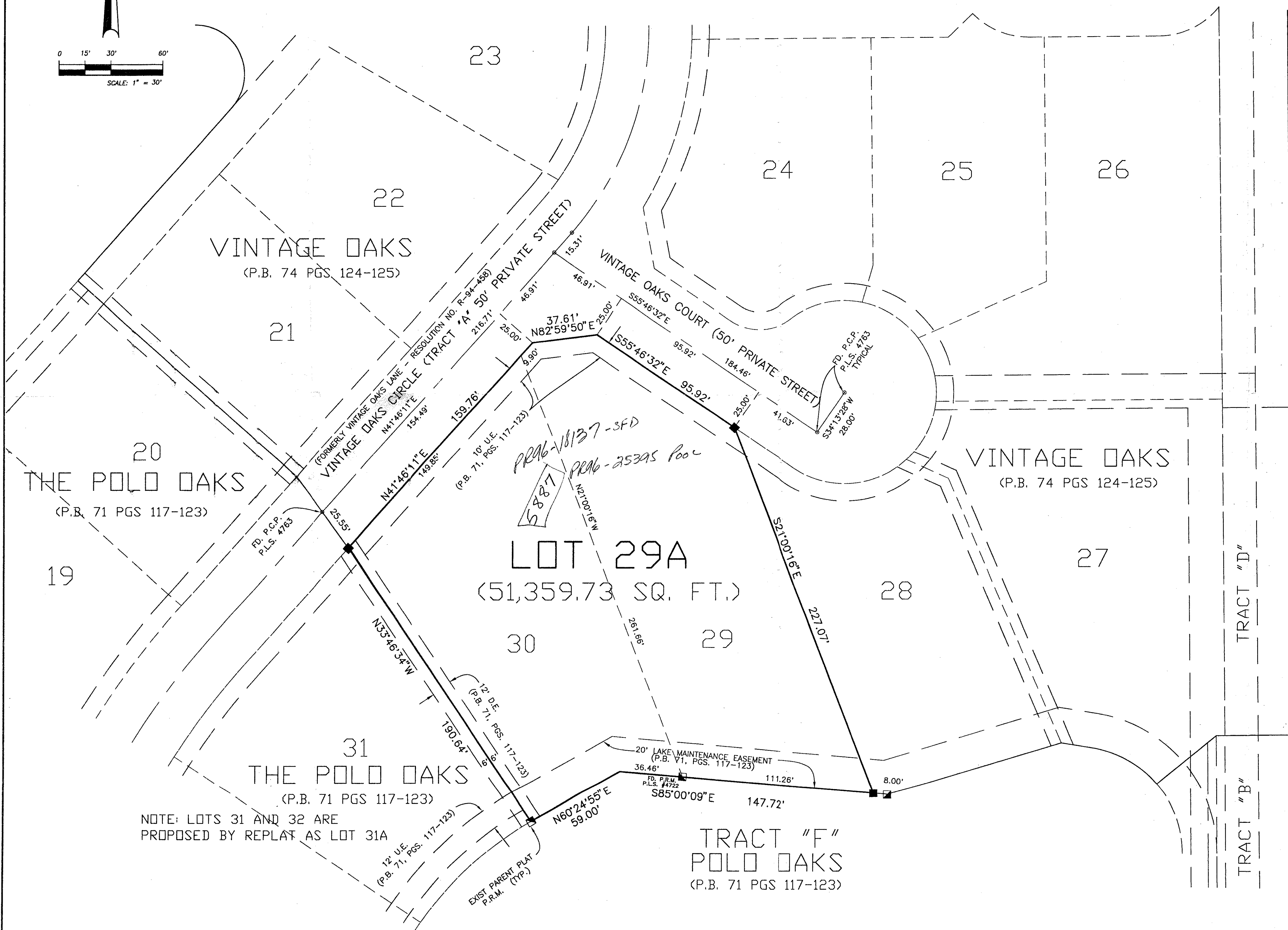
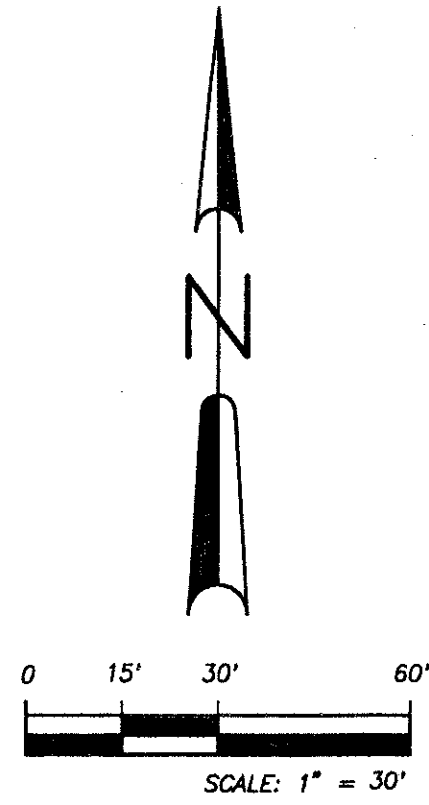
DOROTHY H. WILKIN
 Clerk Circuit Court

By: _____

ABBREVIATION LEGEND

C/CALC	CALCULATED DIMENSION
D.E.	DRAINAGE EASEMENT
DISC	BRASS DISC
FD/FND	FOUND
L.B.	LICENSED BUSINESS LAND SURVEYOR
L.S.	NON-RADIAL
N.R.	NON-RADIAL
O.R.B.	OFFICIAL RECORD BOOK
P/PLAT	PREVIOUSLY PLATTED
P.B.	PLAT BOOK
P.C.P.	PERMANENT CONTROL POINT
P.L.S.	PROFESSIONAL LAND SURVEYOR
P.O.B.	POINT OF BEGINNING
P.O.C.	POINT OF COMMENCEMENT
P.R.M.	PERMANENT REFERENCE MONUMENT
PC	POINT OF CURVATURE
PK	PK BRAND NAIL
PT.	POINT OF TANGENCY
R/REC	RECORD DATA
R/W	RIGHT-OF-WAY
REF.	REFERENCE
RGE.	RANGE
SEC.	SECTION
TWP.	TOWNSHIP
TYP.	TYPICAL
U.E.	UTILITY EASEMENT
N	STATE PLANE NORTHING
E	STATE PLANE EASTING

- DENOTES PERMANENT CONTROL POINT FOUND (P.C.P.) P.L.S. 4763 UNLESS OTHERWISE NOTED
- DENOTES PERMANENT REFERENCE MONUMENT FOUND P.L.S. 4763 UNLESS OTHERWISE NOTED
- DENOTES PERMANENT REFERENCE MONUMENT SET P.L.S. 4544 - L.B. 4574 UNLESS OTHERWISE NOTED



*PET. 84-71
 ALLOC. #0001
 5/3/3/K*

*POLO CLUB PUD
 TRACT R)*

SUBDIVISION: VINTAGE OAKS
 BOOK: 77
 FLOOD ZONE: C
 QUAD: 37
 SE: 87-18
 PUD NAME: POLO CLUB

NOTE: LOTS 31 AND 32 ARE PROPOSED BY REPLAT AS LOT 31A

PETSCHÉ & ASSOCIATES, INC. Professional Engineers - Land Surveyors - Development Consultants - Testing Services 2581 Metrocentre Boulevard, Suite 6, West Palm Beach, Florida 33407 (407) 640-3800 6799 Overseas Highway, Suite 7, Marathon, Florida 33050 (305) 743-5788 1600 Redbud Boulevard, Suite 402, McKinney, Texas 75069 (214) 562-9606			
VINTAGE OAKS REPLAT OF LOTS 29 AND 30			
SECTION 26, TOWNSHIP 46S., RANGE 42E. PALM BEACH COUNTY, FLORIDA			
Drawn by: R. HAGLER	Date: APRIL 1996	SCALE: 1" = 30'	JOB NUMBER: SHEET OF 96002PLDWG 2 OF 2
Designed by: R. HAGLER	Checked by: R. HAGLER		