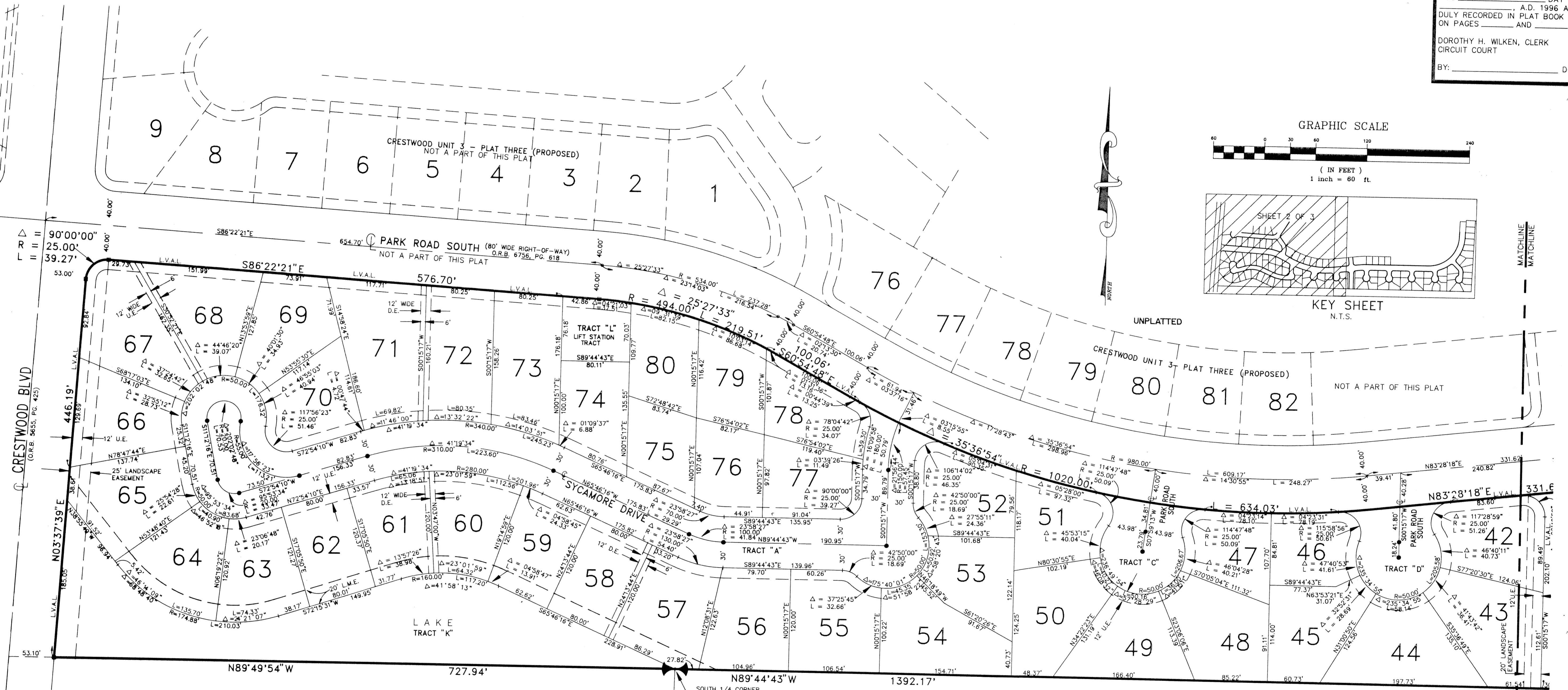
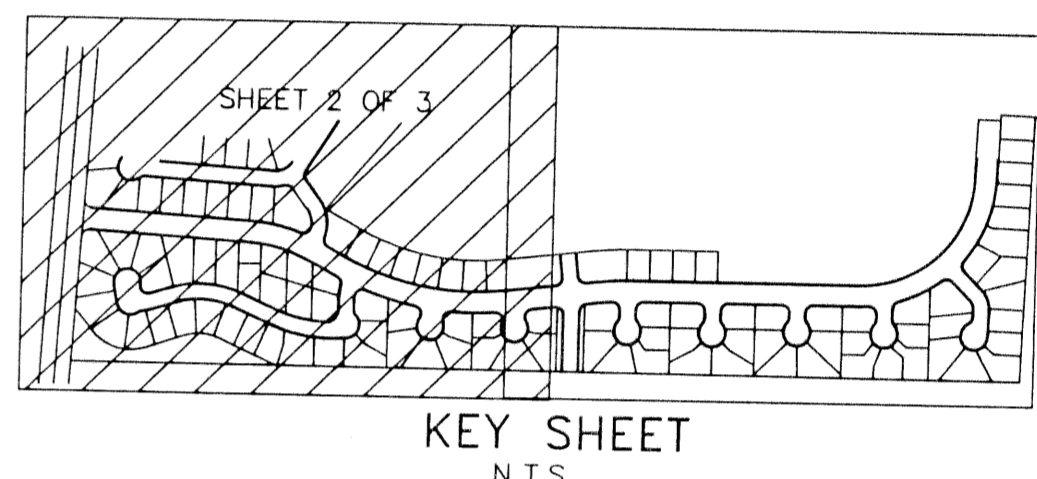
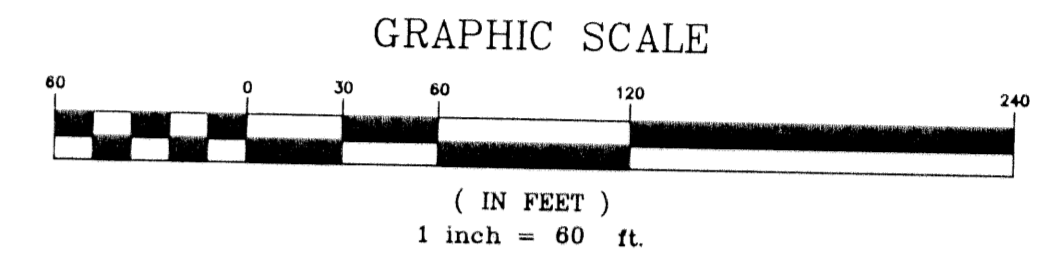


# CRESTWOOD UNIT 3 - PLAT TWO

SITUATE IN SECTION 27, TOWNSHIP 43 SOUTH, RANGE 41 EAST  
VILLAGE OF ROYAL PALM BEACH, PALM BEACH COUNTY, FLORIDA  
NOVEMBER 1995

# 169

STATE OF FLORIDA }  
COUNTY OF PALM BEACH } SS  
THIS PLAT WAS FILED FOR RECORD  
AT \_\_\_\_\_ DAY OF \_\_\_\_\_  
A.D. 1996 AND  
DULY RECORDED IN PLAT BOOK  
ON PAGES \_\_\_\_\_ AND \_\_\_\_\_  
DOROTHY H. WILKEN, CLERK  
CIRCUIT COURT  
BY: \_\_\_\_\_ DC



- LIST OF ABBREVIATIONS
- ⊙ (P.R.M.) INDICATES PERMANENT REFERENCE MONUMENT SET (#2633)
  - (P.C.P.) INDICATES PERMANENT CONTROL POINT SET (#2633)
  - ⊕ CENTERLINE
  - O.R.B. OFFICIAL RECORD BOOK
  - PG. PAGE
  - D.E. DRAINAGE EASEMENT
  - U.E. UTILITY EASEMENT
  - L.V.A.L. LIMITED VEHICULAR ACCESS LINE
  - L.M.E. LAKE MAINTENANCE EASEMENT

SUBDIVISION - CRESTWOOD  
 BOOK 77 PAGE 169  
 FLOOD ZONE - FLOOD MAP  
 QUAD # - ZONING  
 SE - ZIP CODE  
 PUD NAME - Village of Royal Palm Beach  
 TAZ - 884

**Shalloway, Foy,  
Rayman & Newell, Inc.**  
 ENGINEERS - PLANNERS - SURVEYORS  
 1201 BELVEDERE ROAD, WEST PALM BEACH, FLORIDA 33405, (407) 655-1151

Date 06/28/1995  
 Designed \_\_\_\_\_  
 Drawn C.A.R.  
 Checked G. RAYMAN  
 Project Manager \_\_\_\_\_

SHEET  
2  
3  
 JDB NO.  
 91084C.02