

POLO OAKS – REPLAT OF LOTS 31 AND 32

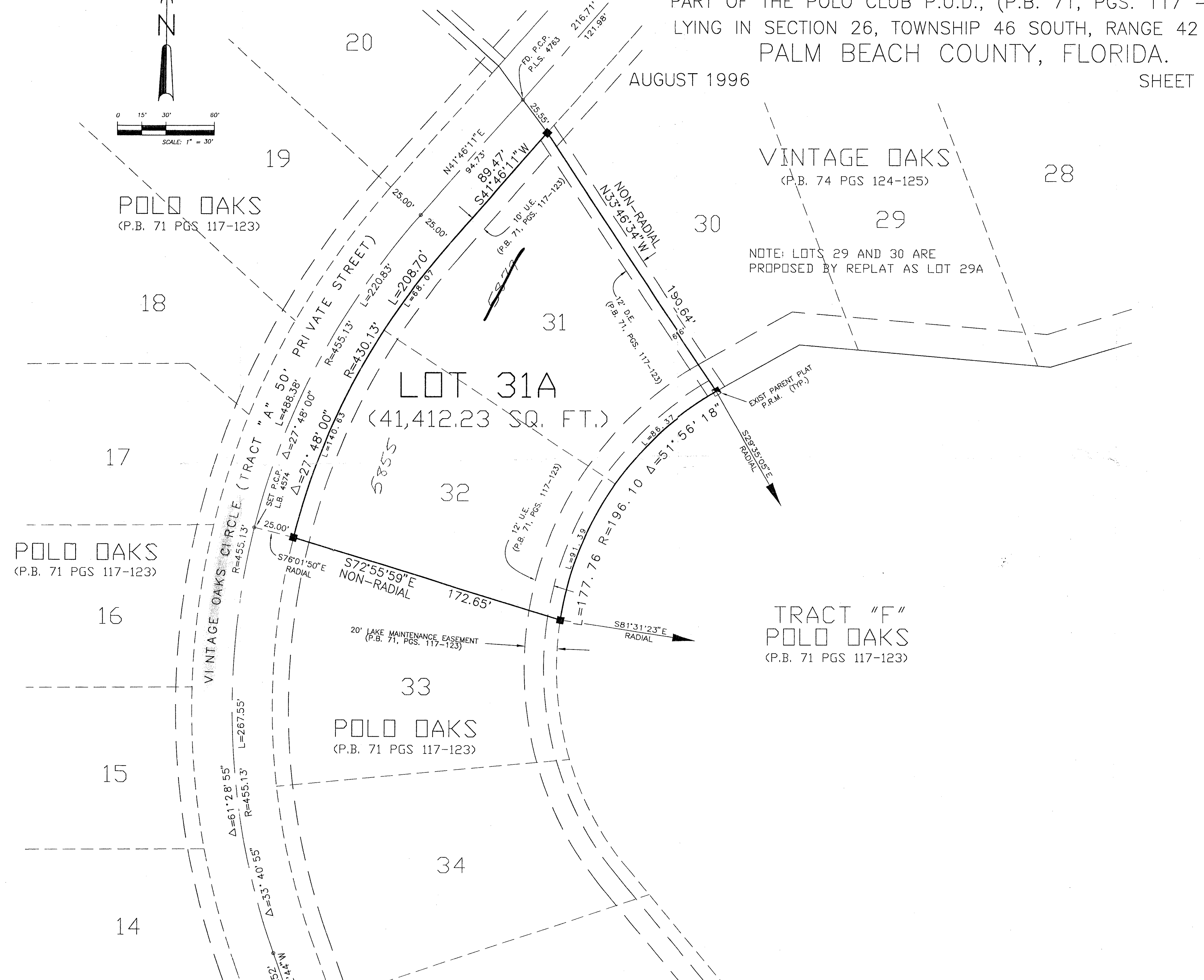
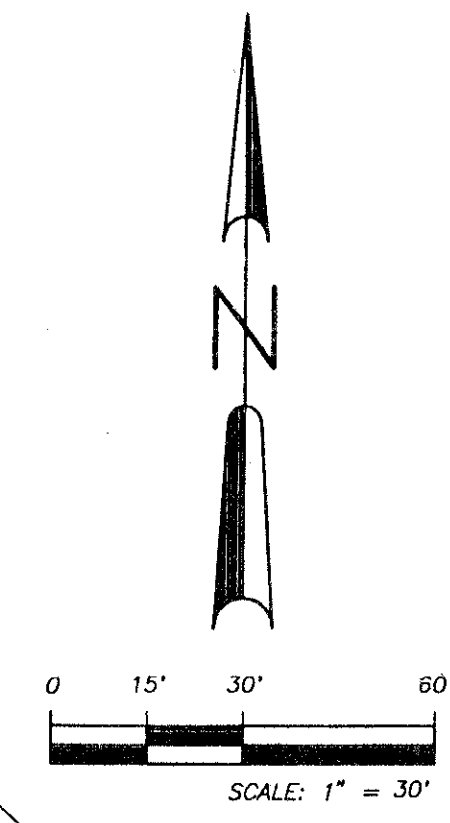
436-041

190

BEING A REPLAT OF A PORTION OF THE POLO OAKS
PART OF THE POLO CLUB P.U.D., (P.B. 71, PGS. 117 – 123)
LYING IN SECTION 26, TOWNSHIP 46 SOUTH, RANGE 42 EAST
PALM BEACH COUNTY, FLORIDA.

AUGUST 1996

SHEET 2 OF 2



STATE OF FLORIDA
COUNTY OF PALM BEACH

This plat was filed for record at _____, this _____ day of _____, 1996, and duly recorded in Plat Book No. _____ on Pages _____ thru _____.

DOROTHY H. WILKIN
Clerk Circuit Court

By: _____

ABBREVIATION LEGEND

C/CALC	CALCULATED DIMENSION
D.E.	DRAINAGE EASEMENT
DISC	BRASS DISC
Fd/FND	FOUND
L.B.	LICENSED BUSINESS
L.S.	LAND SURVEYOR
N.R.	NON-RADIAL
O.R.B.	OFFICIAL RECORD BOOK
P/PLAT	PREVIOUSLY PLATTED
P.B.	PLAT BOOK
P.C.P.	PERMANENT CONTROL POINT
P.L.S.	PROFESSIONAL LAND SURVEYOR
P.O.B.	POINT OF BEGINNING
P.O.C.	POINT OF COMMENCEMENT
P.R.M.	PERMANENT REFERENCE MONUMENT
PC.	POINT OF CURVATURE
PK	PK BRAND NAIL
PT.	POINT OF TANGENCY
R/REC	RECORD DATA
R/W	RIGHT-OF-WAY
REF.	REFERENCE
RGE.	RANGE
SEC.	SECTION
TWP.	TOWNSHIP
TYP.	TYPICAL
U.E.	UTILITY EASEMENT
N #	STATE PLANE NORTHING
E #	STATE PLANE EASTING

- DENOTES PERMANENT CONTROL POINT FOUND (P.C.P.) P.L.S. 4763 UNLESS OTHERWISE NOTED
- DENOTES PERMANENT REFERENCE MONUMENT FOUND P.L.S. 4763 UNLESS OTHERWISE NOTED
- DENOTES PERMANENT REFERENCE MONUMENT SET P.L.S. 4544 - L.B. 4574 UNLESS OTHERWISE NOTED

SURVEYOR'S FILE NO. 190
 BLOCK 77
 PLAT 190
 PLAT MAP #22008
 ZONE # 37
 ZONE # 37
 ZIP CODE 33405
 PUD NAME
 PUD NAME

PETSCHÉ & ASSOCIATES, INC.
Professional Engineers - Land Surveyors - Development Consultants - Testing Services

2581 Metrocentre Boulevard, Suite 6, West Palm Beach, Florida 33407 (407) 640-3800
 6789 Overseas Highway, Suite 7, Marathon, Florida 33050 (305) 743-5786
 1600 Redbud Boulevard, Suite 402, McKinney, Texas 75069 (214) 562-9606

POLO OAKS
REPLAT OF LOTS 31 AND 32
SECTION 26, TOWNSHIP 46S., RANGE 42E.
PALM BEACH COUNTY, FLORIDA

Drawn by: R. HAGLER	Date: APRIL 1996	SCALE: 1" = 30'	JOB NUMBER: 96002PL1.DWG	SHEET OF 2 OF 2
Designed by: R. HAGLER	Checked by:		96-002	