

ADDISON RESERVE PLAT THREE

230-020

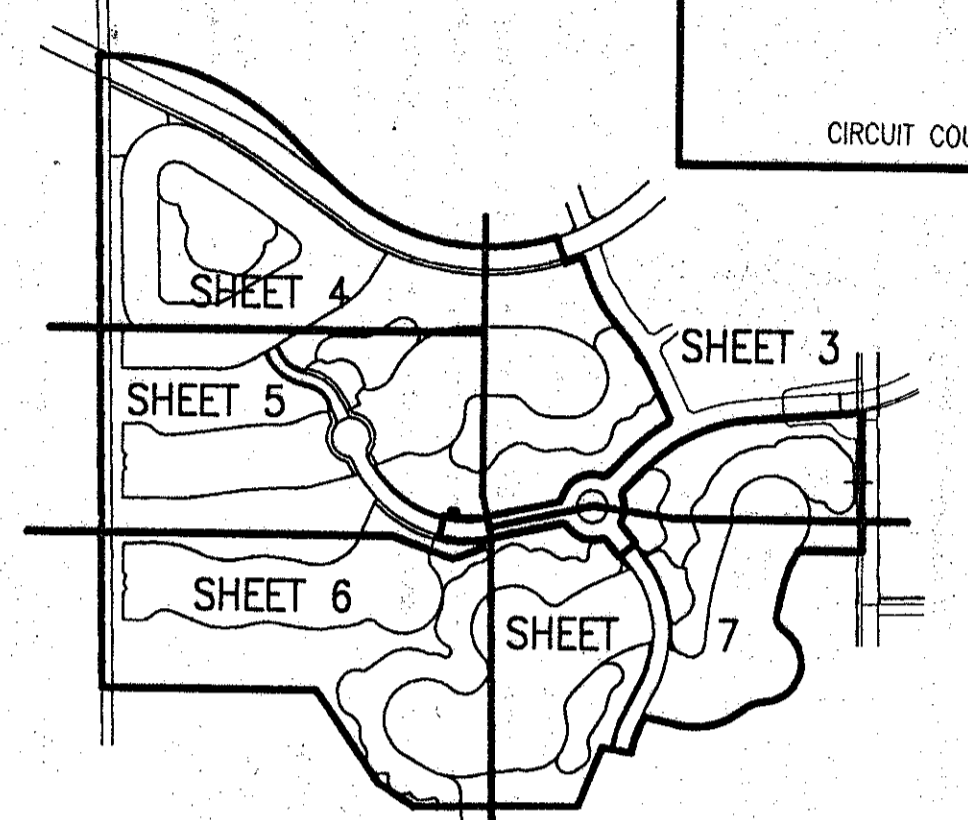
8

PART OF GLENEAGLES/POLO CLUB WEST P.U.D.
SITUATE IN SECTIONS 21 & 28, TOWNSHIP 46 SOUTH, RANGE 42 EAST
AND BEING A PORTION OF "THE PALM BEACH FARMS COMPANY
PLAT NO. 1" (P.B. 2, PGS. 26-28)
PALM BEACH COUNTY, FLORIDA
APRIL, 1996 SHEET 4 OF 8

Plat 80-215

STATE OF FLORIDA
COUNTY OF PALM BEACH
THIS PLAT WAS FILED FOR
RECORD
THIS _____ DAY OF _____
AD, 1996 AND DULY RECORDED
IN PLAT BOOK _____ ON PAGE(S)
_____ AND
DOROTHY H. WILKEN, CLERK
BY: _____, D.C.

CIRCUIT COURT SEAL



SHEET LOCATION MAP
NOT TO SCALE

- LEGEND**
- B.E. BUFFER EASEMENT
 - Δ CENTRAL (DELTA) ANGLE
 - D.E. DRAINAGE EASEMENT
 - FPL FLORIDA POWER & LIGHT
 - L ARC LENGTH
 - L.A.E. LIMITED ACCESS EASEMENT
 - L.E. LANDSCAPE EASEMENT
 - L.M.E. LAKE MAINTENANCE EASEMENT
 - L.M.A.E. LAKE MAINTENANCE ACCESS EASEMENT
 - L.W.D.D. LAKE WORTH DRAINAGE DISTRICT
 - (NR) NON-RADIAL
 - O.R.B. OFFICIAL RECORD BOOK
 - P.B. PLAT BOOK
 - PG(S) PAGE(S)
 - RADIUS
 - R.U.E. UTILITY EASEMENT
 - PERMANENT REFERENCE MONUMENT FOUND PLS# 4763
 - PERMANENT REFERENCE MONUMENT SET PLS# 4763
 - PERMANENT CONTROL POINT SET PLS# 4763
 - CENTERLINE

SUBDIVISION Addison Reserve
BOOK 78
PAGE 8
FLOOD ZONE FLOOD MAP 80-215 A
ZONING RTS
QUAD 52
SE 80-215
PUD NAME Mary Hanna Cloodfelder, P.L.S.

Recorded 11/24/96

REV. 8-21-96
CAD FILE: TWKCAD1\ADDIRPO3

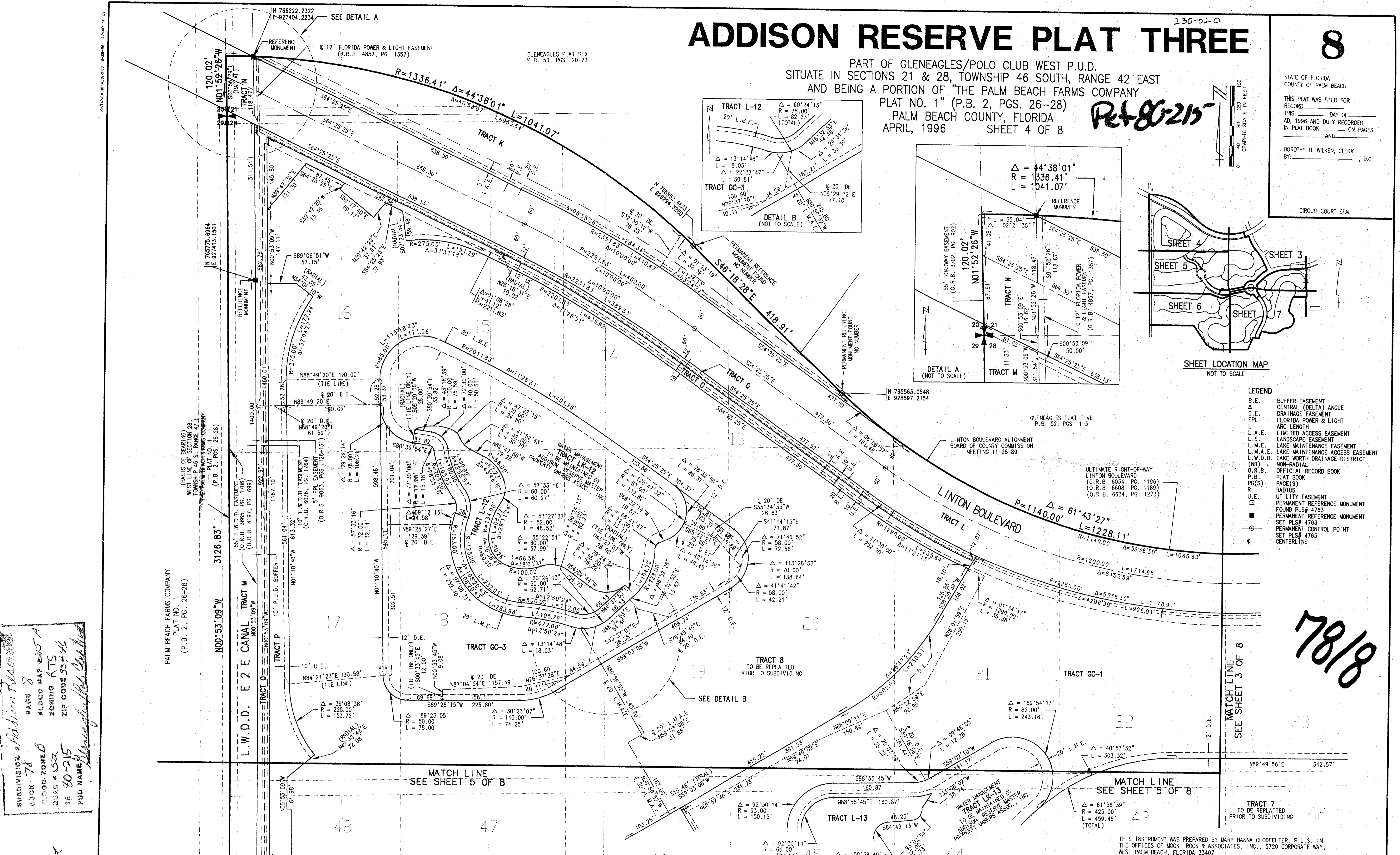
SCALE: 1" = 80'
P.A. NO.: 94182.26
DATE: APRIL 1996
DRAWING NO.: 46-42-28-77

MOCK ROOS
ENGINEERS SURVEYORS PLANNERS
5720 Corporate Way, West Palm Beach, Florida 33407
(407) 683-3113, fax 478-7248

ADDISON RESERVE PLAT THREE
PART OF GLENEAGLES/POLO CLUB WEST P.U.D.
SITUATE IN SECTIONS 21 & 28, TOWNSHIP 46 SOUTH, RANGE 42 EAST
AND BEING A PORTION OF "THE PALM BEACH FARMS COMPANY
PLAT NO. 1" (P.B. 2, PGS. 26-28)
PALM BEACH COUNTY, FLORIDA

SHEET 4 OF 8

78/8



K:\TWKCAD1\ADDIRPO3 8-21-96 11:56:07 AM EST