

ADDISON RESERVE PLAT THREE

PART OF GLENEAGLES/POLO CLUB WEST P.U.D.
 SITUATE IN SECTIONS 21 & 28, TOWNSHIP 46 SOUTH, RANGE 42 EAST
 AND BEING A PORTION OF "THE PALM BEACH FARMS COMPANY
 PLAT NO. 1" (P.B. 2, PGS. 26-28)
 PALM BEACH COUNTY, FLORIDA
 APRIL, 1996 SHEET 5 OF 8

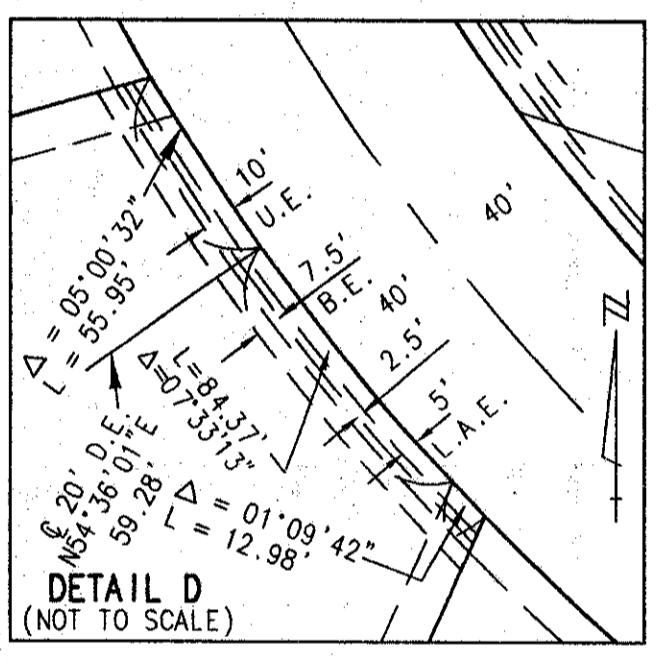
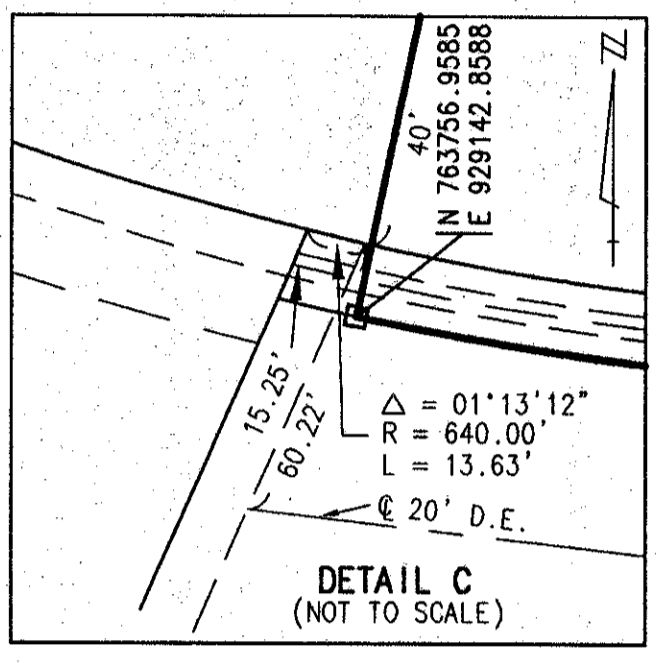
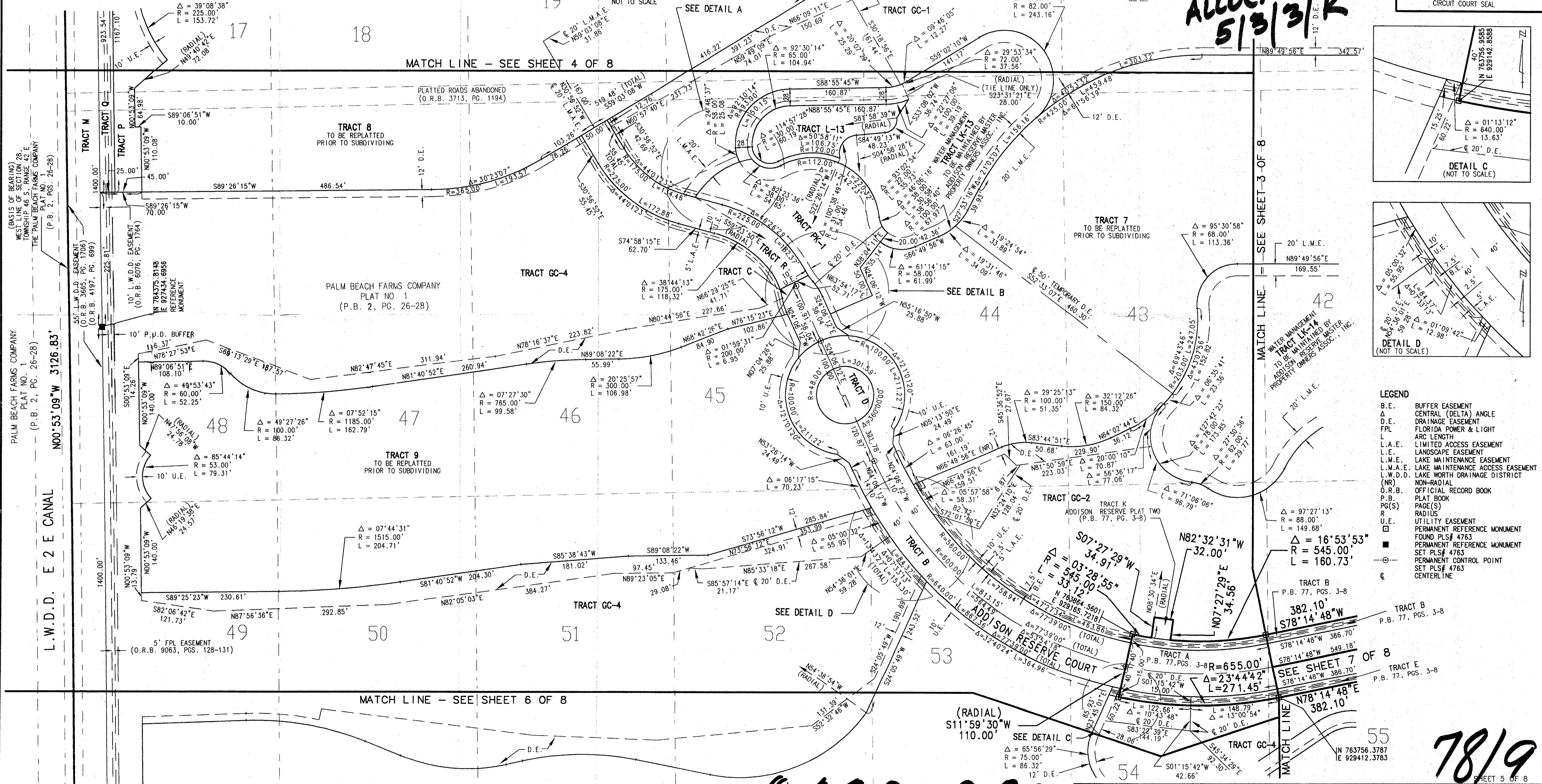
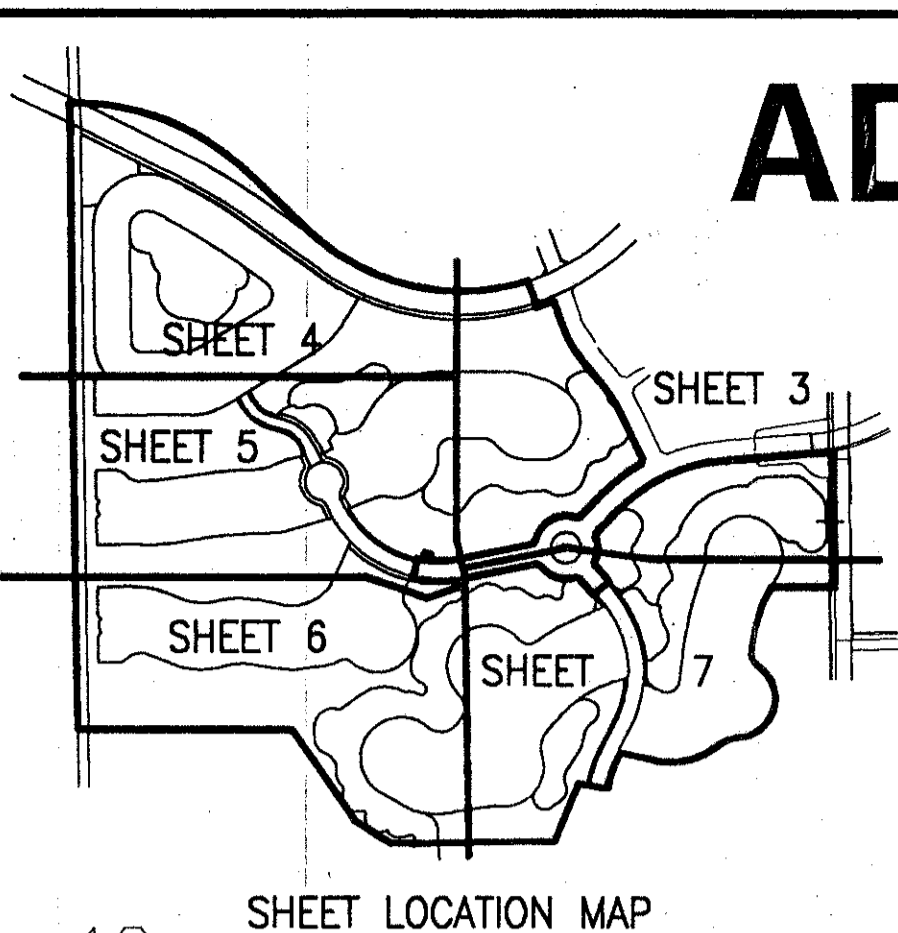
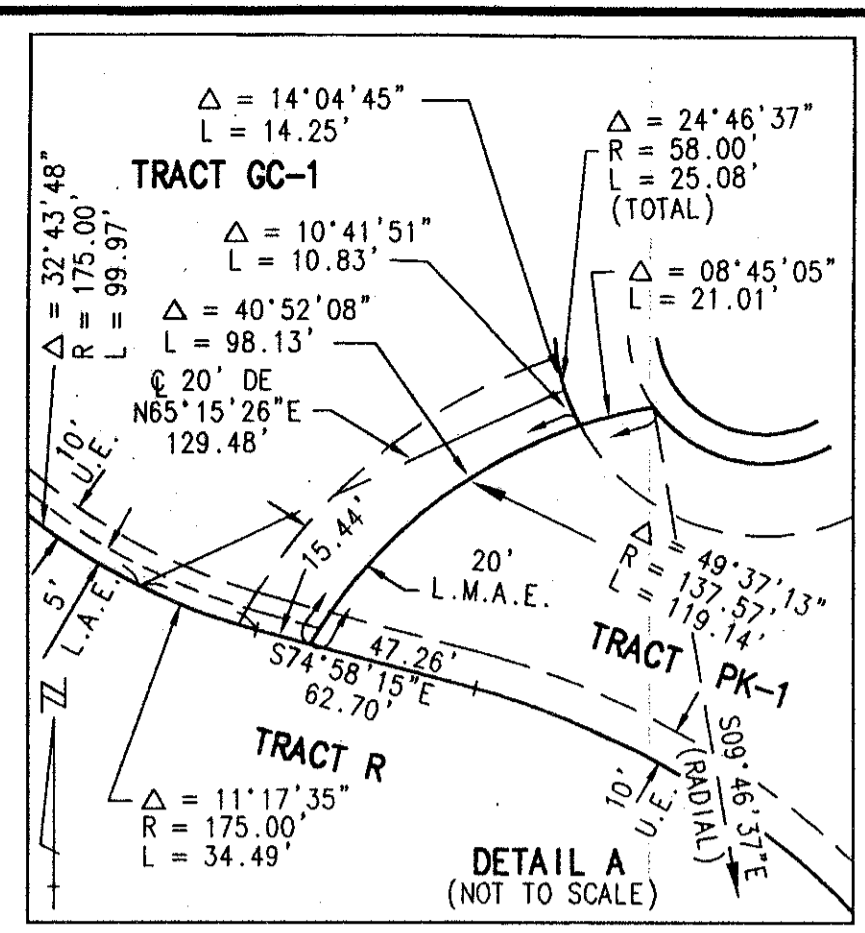
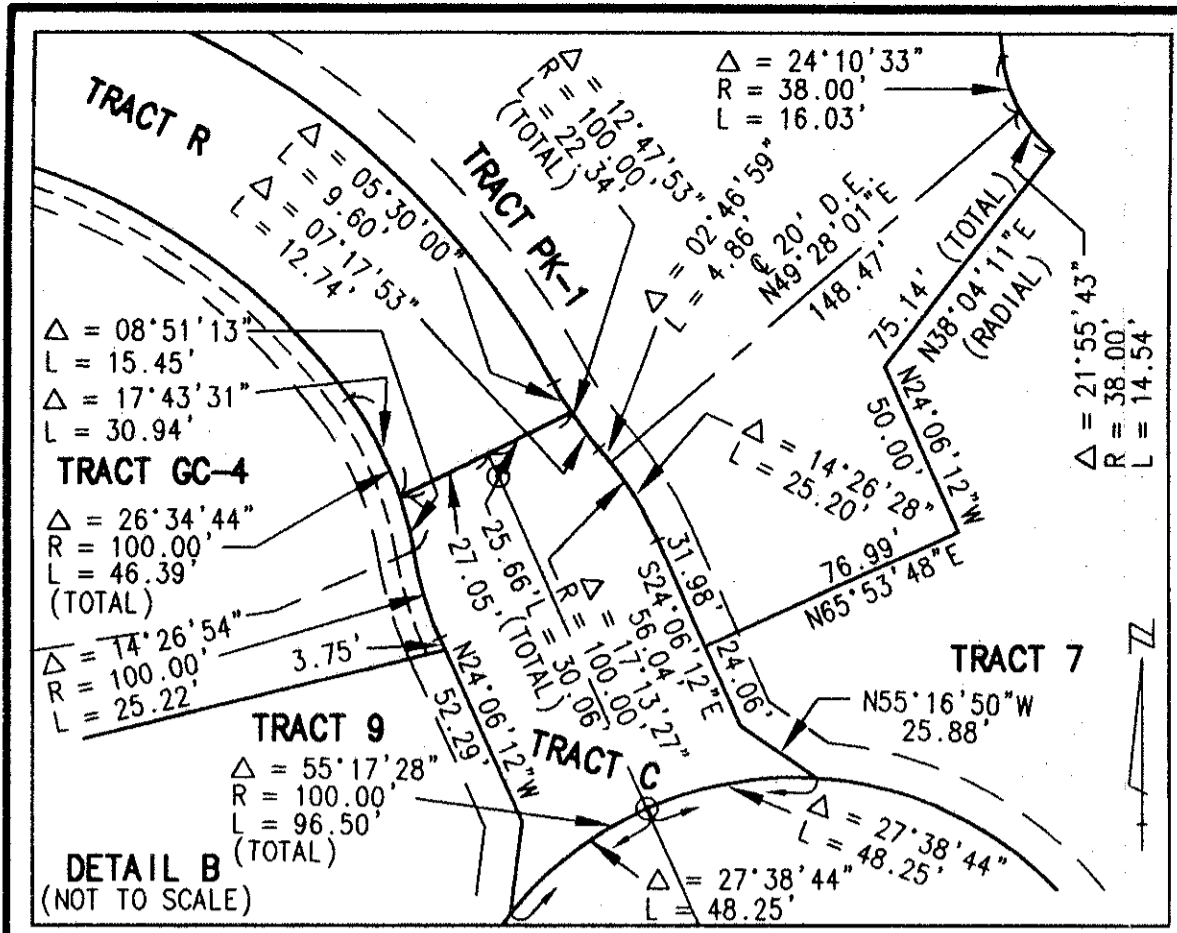
9

STATE OF FLORIDA
 COUNTY OF PALM BEACH

THIS PLAT WAS FILED FOR
 RECORD _____ DAY OF _____
 AD, 1996 AND DULY RECORDED
 IN PLAT BOOK _____ ON PAGES
 _____ AND _____
 DOROTHY H. WILKEN, CLERK
 BY: _____ D.C.

CIRCUIT COURT SEAL

*PET. 80-215
 ALLOC. #0007
 5/3/31/K*



- LEGEND**
- B.E. BUFFER EASEMENT
 - C.A. CENTRAL (DELTA) ANGLE
 - D.E. DRAINAGE EASEMENT
 - FPL FLORIDA POWER & LIGHT ARC LENGTH
 - L.A.E. LIMITED ACCESS EASEMENT
 - L.E. LANDSCAPE EASEMENT
 - L.M.E. LAKE MAINTENANCE EASEMENT
 - L.W.D. LAKE WORTH DRAINAGE DISTRICT
 - (NR) NON-RADIAL
 - O.R.B. OFFICIAL RECORD BOOK
 - P.B. PLAT BOOK
 - PG(S) PAGE(S)
 - R. RADIUS
 - U.E. UTILITY EASEMENT
 - PRM PERMANENT REFERENCE MONUMENT FOUND PLS# 4763
 - PRM PERMANENT REFERENCE MONUMENT SET PLS# 4763
 - PCP PERMANENT CONTROL POINT SET PLS# 4763
 - CL CENTERLINE

Subdivision Addison Reserve
 BOOK 78 PAGE 9
 FLOOD ZONE D FLOOD MAP 215A
 QUAD # 52 ZONING RTS
 SE 80-215 ZIP CODE 33444
 FUD NAME *Glennagles Polo Club West*

REV. 8-22-96
 CAD FILE: TWKCAD1/ADDIRP04

TRACT 10
 TO BE REPLATTED
 PRIOR TO SUBDIVIDING

THIS INSTRUMENT WAS PREPARED BY MARY HANNA CLODFELTER, P.L.S. IN THE OFFICES OF MOCK, ROOS & ASSOCIATES, INC., 5720 CORPORATE WAY, WEST PALM BEACH, FLORIDA 33407.

SCALE: 1" = 80'
 P.A. NO.: 94182.26
 DATE: APRIL 1996
 DRAWING NO. 46-42-28-77

MOCK ROOS
 ENGINEERS SURVEYORS PLANNERS
 5720 Corporate Way, West Palm Beach, Florida 33407
 (407) 683-3113, fax 478-7248

ADDISON RESERVE PLAT THREE
 PART OF GLENEAGLES/POLO CLUB WEST P.U.D.
 SITUATE IN SECTIONS 21 & 28, TOWNSHIP 46 SOUTH, RANGE 42 EAST
 AND BEING A PORTION OF "THE PALM BEACH FARMS COMPANY
 PLAT NO. 1" (P.B. 2, PGS. 26-28)
 PALM BEACH COUNTY, FLORIDA

0230-020

78/9
 SHEET 5 OF 8