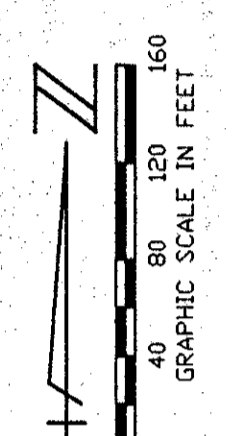


STATE OF FLORIDA
COUNTY OF PALM BEACH
THIS PLAT WAS FILED FOR
RECORD
THIS _____ DAY OF _____
AD, 1996 AND DULY RECORDED
IN PLAT BOOK _____ ON PAGES
_____ AND _____
AND
DOROTHY H. WILKEN, CLERK
BY: _____ D.C.

CIRCUIT COURT SEAL



Ret 80-215

- LEGEND**
- B.E. BUFFER EASEMENT
 - C. CENTRAL (DELTA) ANGLE
 - D.E. DRAINAGE EASEMENT
 - FPL FLORIDA POWER & LIGHT
 - L ARC LENGTH
 - L.A.E. LIMITED ACCESS EASEMENT
 - L.E. LANDSCAPE EASEMENT
 - L.M.E. LAKE MAINTENANCE EASEMENT
 - L.M.A.E. LAKE MAINTENANCE ACCESS EASEMENT
 - L.W.D.D. LAKE WORTH DRAINAGE DISTRICT
 - (NR) NON-RADIAL
 - O.R.B. OFFICIAL RECORD BOOK
 - P.B. PLAT BOOK
 - PG(S) PAGE(S)
 - R RADIUS
 - U.E. UTILITY EASEMENT
 - PERMANENT REFERENCE MONUMENT FOUND PLS# 4763
 - PERMANENT REFERENCE MONUMENT SET PLS# 4763
 - PERMANENT CONTROL POINT SET PLS# 4763
 - C CENTERLINE

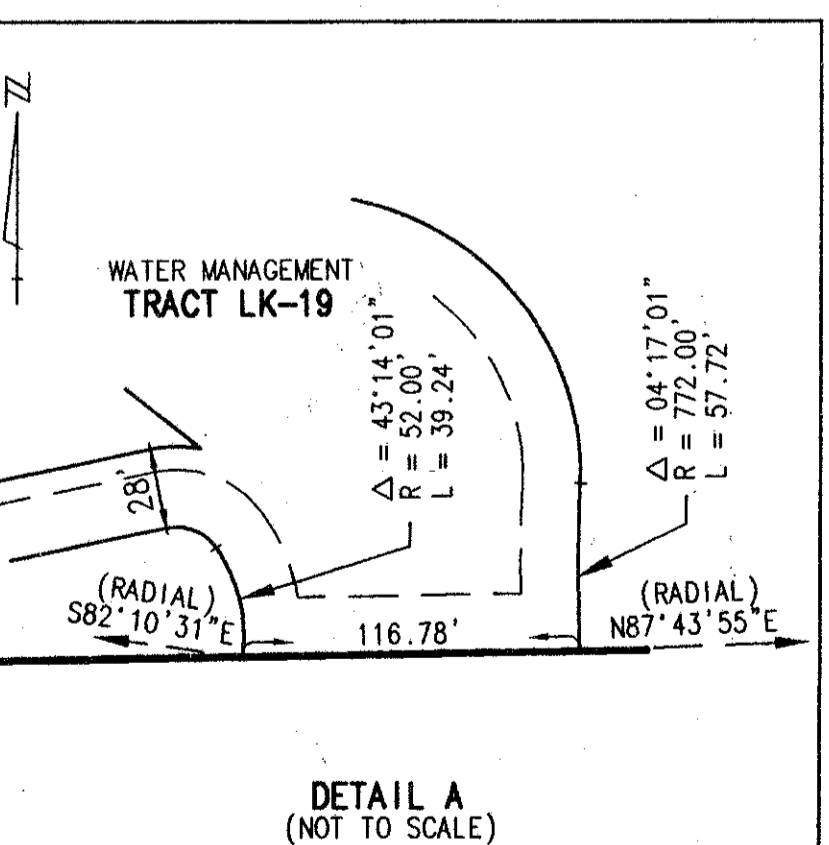
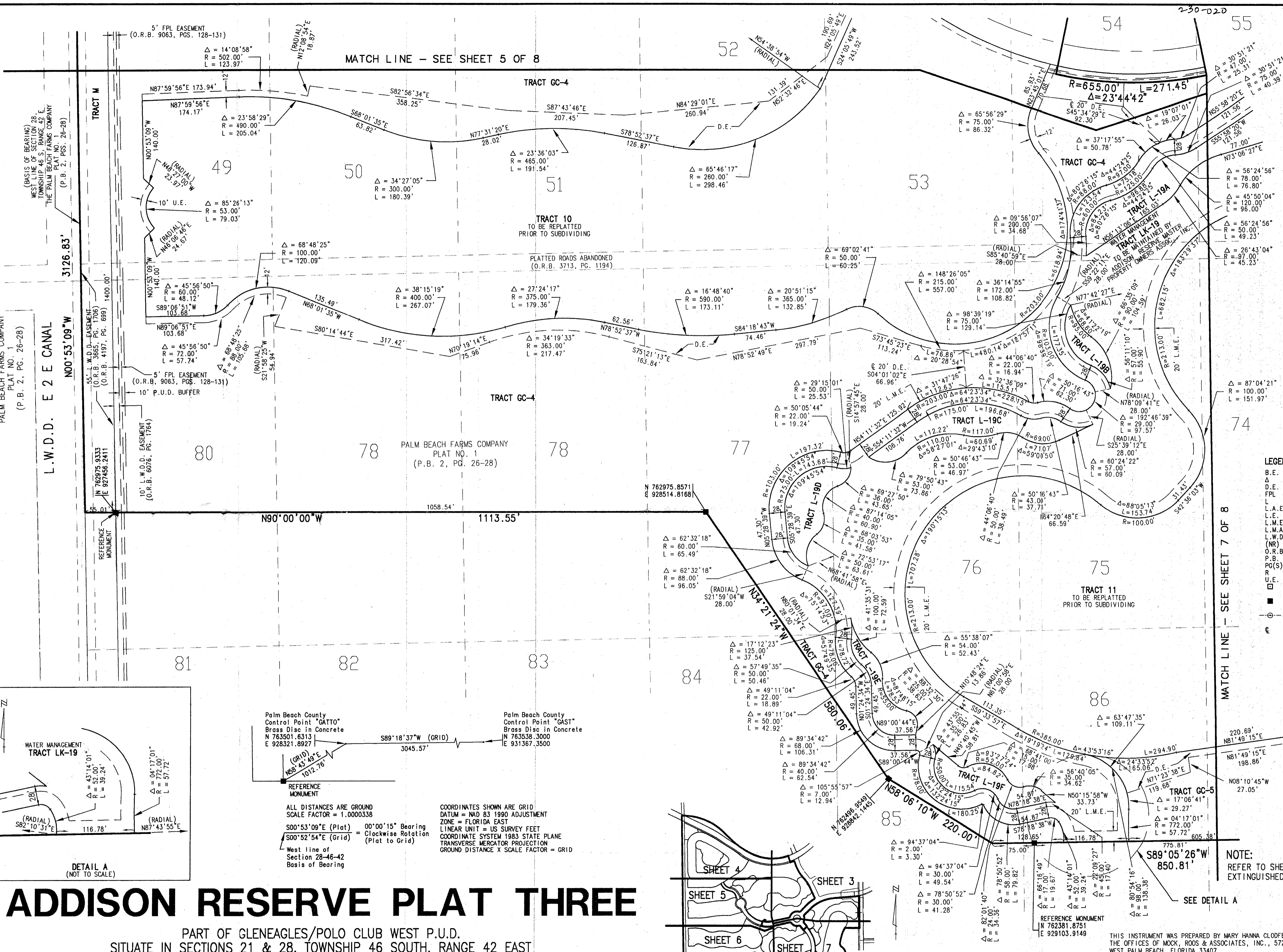
78/10

MATCH LINE - SEE SHEET 7 OF 8

SEE DETAIL A

NOTE:
REFER TO SHEET 8 OF 8 FOR EASEMENT TO BE EXTINGUISHED BY THE FILING OF THIS PLAT.

SHEET 6 OF 8



Palm Beach County Control Point "GATTO"
Brass Disc in Concrete
N 763501.6313
E 928321.8927

Palm Beach County Control Point "GAST"
Brass Disc in Concrete
N 763538.3000
E 931367.3500

REFERENCE MONUMENT

ALL DISTANCES ARE GROUND
SCALE FACTOR = 1.0000338

S00°53'09"E (Plat) 00°00'15" Bearing
S00°52'54"E (Grid) = Clockwise Rotation (Plat to Grid)

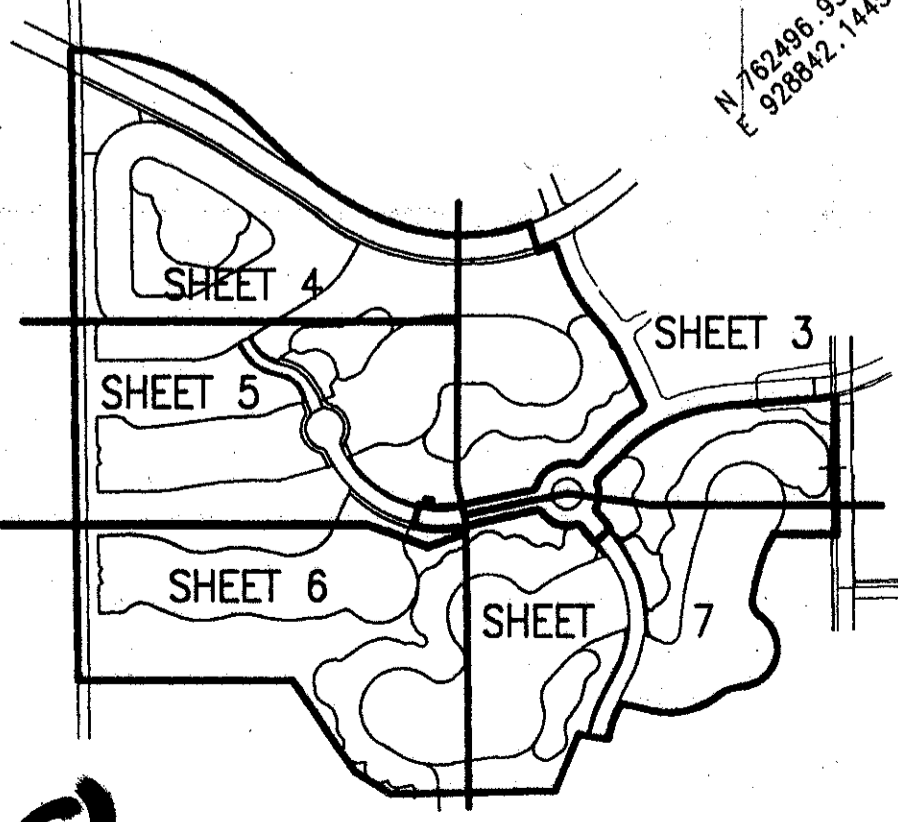
West line of Section 28-46-42
Basis of Bearing

COORDINATES SHOWN ARE GRID
DATUM = NAD 83 1990 ADJUSTMENT
ZONE = FLORIDA EAST
LINEAR UNIT = US SURVEY FEET
COORDINATE SYSTEM 1983 STATE PLANE
TRANSVERSE MERCATOR PROJECTION
GROUND DISTANCE X SCALE FACTOR = GRID

ADDISON RESERVE PLAT THREE

PART OF GLENEAGLES/POLO CLUB WEST P.U.D.
SITUATE IN SECTIONS 21 & 28, TOWNSHIP 46 SOUTH, RANGE 42 EAST
AND BEING A PORTION OF "THE PALM BEACH FARMS COMPANY
PLAT NO. 1" (P.B. 2, PGS. 26-28)
PALM BEACH COUNTY, FLORIDA
APRIL, 1996 SHEET 6 OF 8

0230-020



SHEET LOCATION MAP
NOT TO SCALE

SUBDIVISION *Addison Reserve*
BOOK *78*
FLOOD ZONE *D*
QUAD *52*
SE *80-215*
PUD NAME *Gleneagles Polo Club West*

REV. 8-22-96
CAD FILE:
TWKCCADDIRPIS

SCALE:
1" = 80'
P.A. NO.:
94182.26
DATE:
APRIL 1996
DRAWING NO.:
46-42-28-77

MOCK ROOS
ENGINEERS SURVEYORS PLANNERS
5720 Corporate Way, West Palm Beach, Florida 33407
(407) 683-3113, fax 478-7248

ADDISON RESERVE
PLAT THREE
PART OF GLENEAGLES/POLO CLUB WEST P.U.D.
SITUATE IN SECTIONS 21 & 28, TOWNSHIP 46 SOUTH, RANGE 42 EAST
AND BEING A PORTION OF "THE PALM BEACH FARMS COMPANY
PLAT NO. 1" (P.B. 2, PGS. 26-28)
PALM BEACH COUNTY, FLORIDA