

STATE OF FLORIDA
COUNTY OF PALM BEACH
THIS PLAT WAS FILED FOR
RECORD _____ DAY OF
AD, 1996 AND DULY RECORDED
IN PLAT BOOK _____ ON PAGES
_____ AND _____
DOROTHY H. WILKEN, CLERK
BY: _____, D.C.

CIRCUIT COURT SEAL

ADDISON RESERVE
PLAT ONE
(P.B. 75, PGS. 143-149)
10' P.U.D. B.E.
(P.B. 75, PG. 143-149)
S. LINE OF N.E. 1/4
OF SECTION 28
L.W.D.D. L-37 CANAL
PERMANENT REFERENCE MONUMENT
(P.B. 75, PGS. 143-149)

NOT PLATTED

DETAIL A
(NOT TO SCALE)

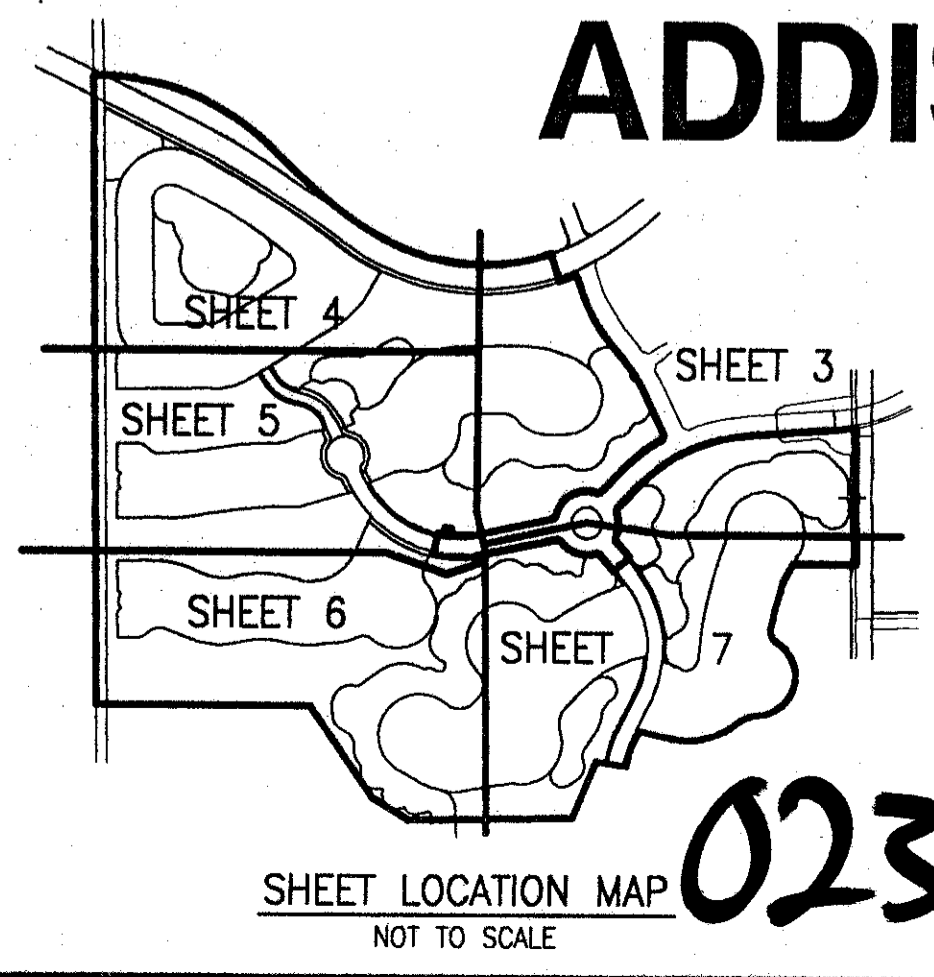
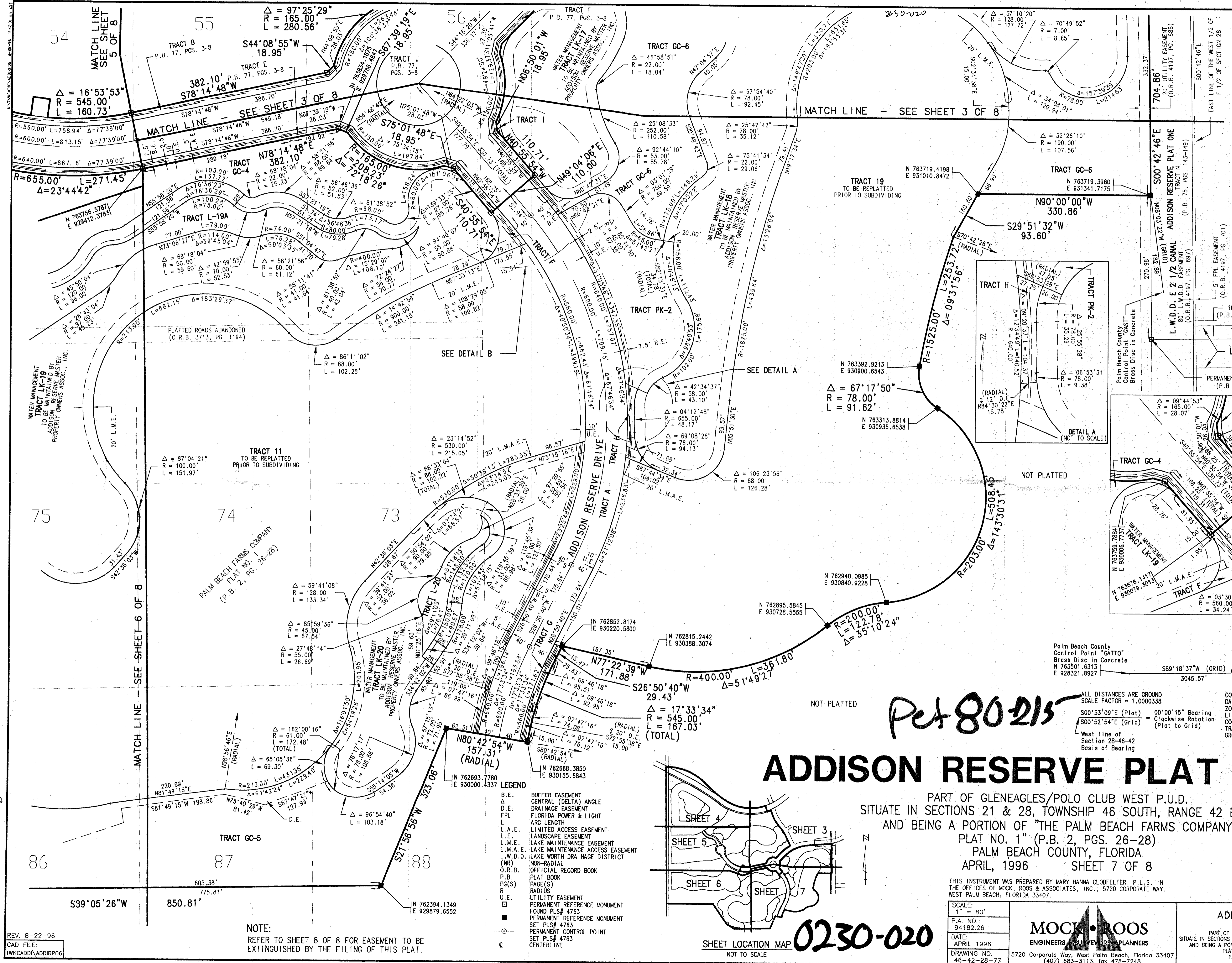
DETAIL B
(NOT TO SCALE)

ALL DISTANCES ARE GROUND
SCALE FACTOR = 1.0000338
S00°53'09"E (Plat) 00'00"15" Bearing
S00°52'54"E (Grid) = Clockwise Rotation (Plat to Grid)
West line of Section 28-46-42
Basis of Bearing

COORDINATES SHOWN ARE GRID
DATUM = NAD 83 1990 ADJUSTMENT
ZONE = FLORIDA EAST
LINEAR UNIT = US SURVEY FEET
COORDINATE SYSTEM 1983 STATE PLANE
TRANSVERSE MERCATOR PROJECTION
GROUND DISTANCE X SCALE FACTOR = GRID

ADDISON RESERVE
PLAT THREE
PART OF GLENEAGLES/POLO CLUB WEST P.U.D.
SITUATE IN SECTIONS 21 & 28, TOWNSHIP 46 SOUTH, RANGE 42 EAST
AND BEING A PORTION OF THE PALM BEACH FARMS COMPANY
PLAT NO. 1" (P.B. 2, PGS. 26-28)
PALM BEACH COUNTY, FLORIDA
APRIL, 1996 SHEET 7 OF 8

SHEET 7 OF 8



Pet 80-215

ADDISON RESERVE PLAT THREE

PART OF GLENEAGLES/POLO CLUB WEST P.U.D.
SITUATE IN SECTIONS 21 & 28, TOWNSHIP 46 SOUTH, RANGE 42 EAST
AND BEING A PORTION OF "THE PALM BEACH FARMS COMPANY
PLAT NO. 1" (P.B. 2, PGS. 26-28)
PALM BEACH COUNTY, FLORIDA
APRIL, 1996 SHEET 7 OF 8

78/11

THIS INSTRUMENT WAS PREPARED BY MARY HANNA CLODFELTER, P.L.S. IN
THE OFFICES OF MOCK, ROOS & ASSOCIATES, INC., 5720 CORPORATE WAY,
WEST PALM BEACH, FLORIDA 33407.

MOCK ROOS
ENGINEERS SURVEYORS PLANNERS
7520 Corporate Way, West Palm Beach, Florida 33407
(407) 683-5113, fax 478-7248

SCALE:
1" = 80'
P.A. NO.:
94182.26
DATE:
APRIL 1996
DRAWING NO.
46-42-28-77

- B.E. BUFFER EASEMENT
- C.A. CENTRAL (DELTA) ANGLE
- D.E. DRAINAGE EASEMENT
- FPL FLORIDA POWER & LIGHT
- ARC LENGTH
- L.A.E. LIMITED ACCESS EASEMENT
- L.E. LANDSCAPE EASEMENT
- L.M.E. LAKE MAINTENANCE EASEMENT
- L.M.A.E. LAKE MAINTENANCE ACCESS EASEMENT
- L.W.D.D. LAKE WORTH DRAINAGE DISTRICT
- (NR) NON-RADIAL
- O.R.B. OFFICIAL RECORD BOOK
- P.B. PLAT BOOK
- P.O.S. POINT OF BEGINNING
- R. RADIUS
- U.E. UTILITY EASEMENT
- PERMANENT REFERENCE MONUMENT
- FOUND PLS# 4763
- PERMANENT REFERENCE MONUMENT
- SET PLS# 4763
- PERMANENT CONTROL POINT
- SET PLS# 4763
- CENTERLINE

NOTE:
REFER TO SHEET 8 OF 8 FOR EASEMENT TO BE
EXTINGUISHED BY THE FILING OF THIS PLAT.

SUBDIVISION Addison Reserve
BOOK 78 PAGE 11
FLOOD MAP 2015A
ZONING RTS
QUAD #52
SE 80-215 ZIP CODE 33446
PUD NAME
1/27/96

REV. 8-22-96
CAD FILE:
TWKCAD01ADDIRP03