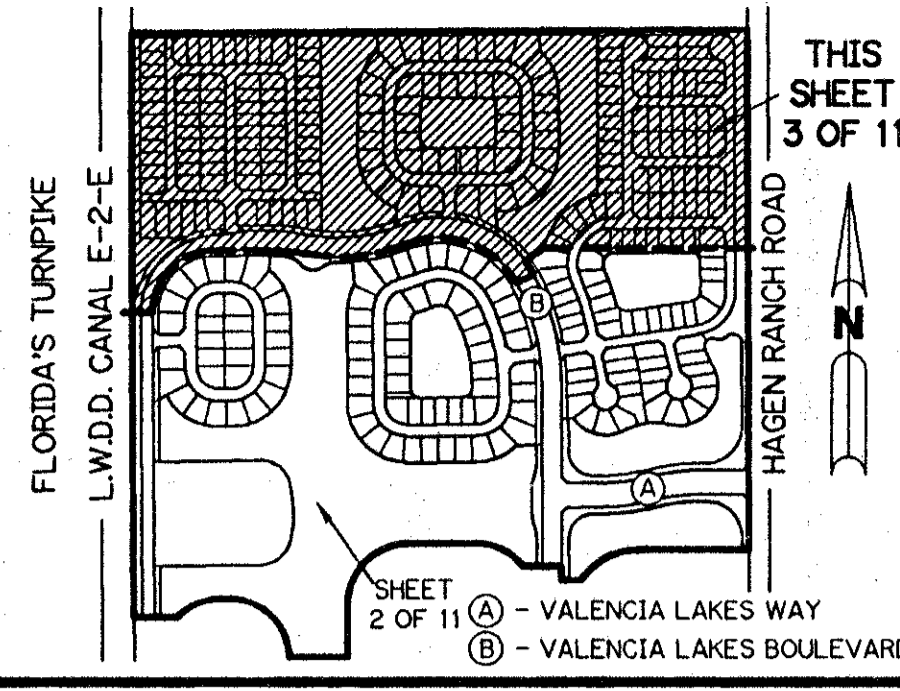


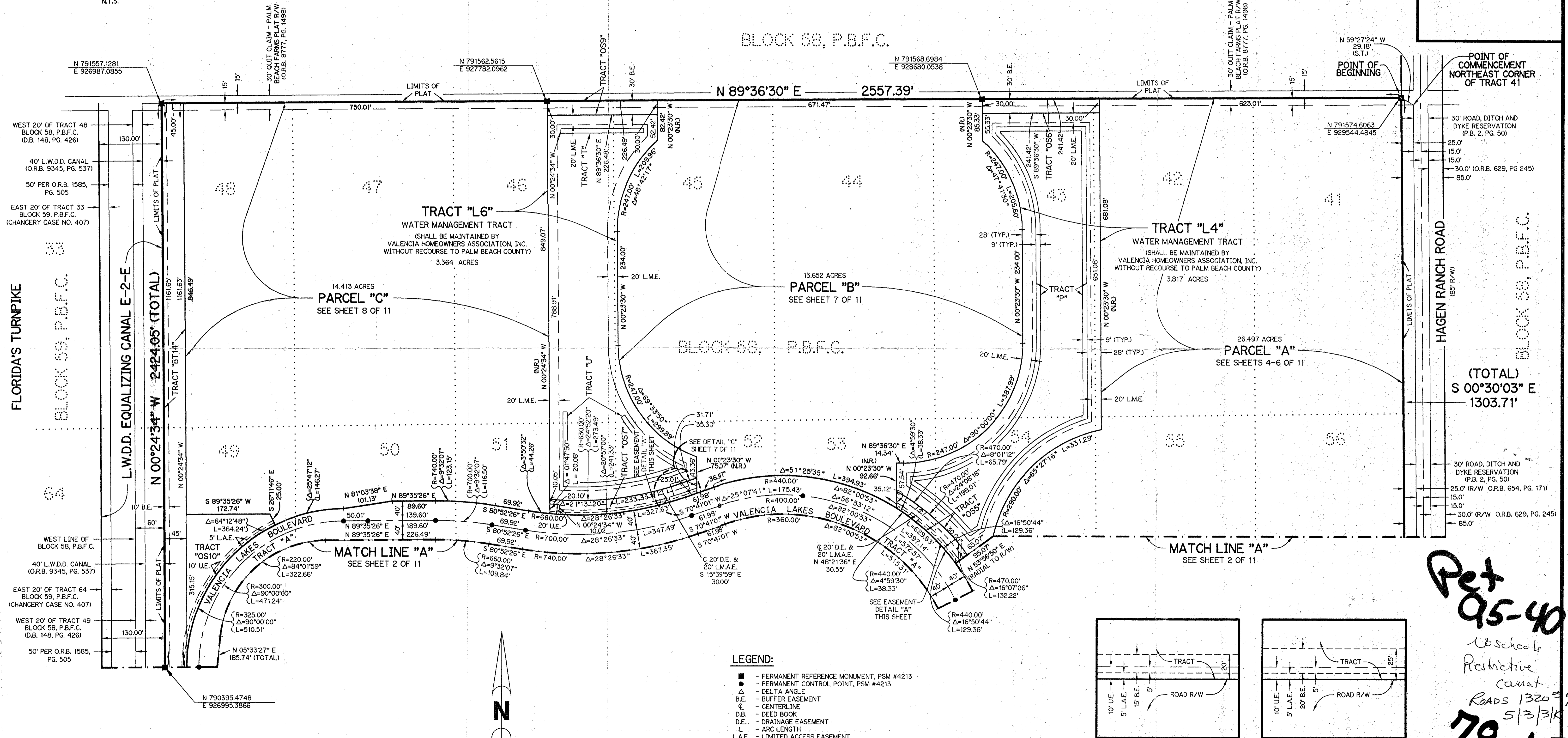
VALENCIA LAKES - PLAT ONE

A PLANNED UNIT DEVELOPMENT
BEING A REPLAT OF ALL OF TRACTS 42, 43, 44, 45, 46, 47, 50, 51, 52, 53, 54, 55, 74, 75, 76, 77, 78, AND 79 AND A PORTION OF TRACTS 41, 48, 49, 56, 73, 80, 81, 82, 83, 84, 85, 86, 87, AND 88 AND ASSOCIATED ABANDONED RIGHT-OF-WAY ALL IN BLOCK 58 ACCORDING TO THE PLAT OF PALM BEACH FARMS COMPANY PLAT NO. 3, AS RECORDED IN PLAT BOOK 2, PAGES 45 THROUGH 54, INCLUSIVE, OF THE PUBLIC RECORDS OF PALM BEACH COUNTY, FLORIDA. LYING IN SECTION 33, TOWNSHIP 45 SOUTH, RANGE 42 EAST.

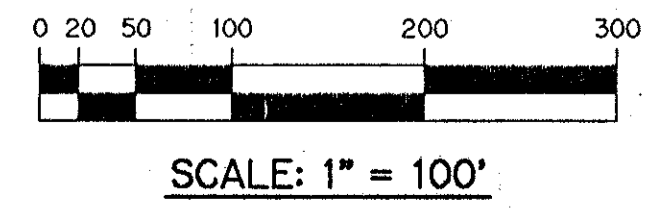
SHEET 3 OF 11 FEBRUARY, 1996



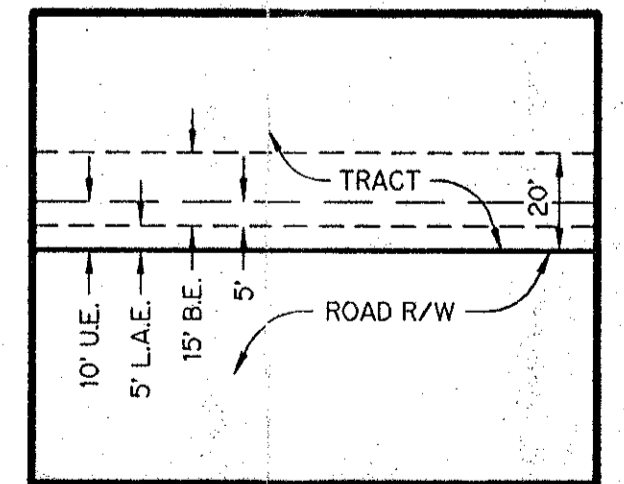
KEY MAP
N.T.S.



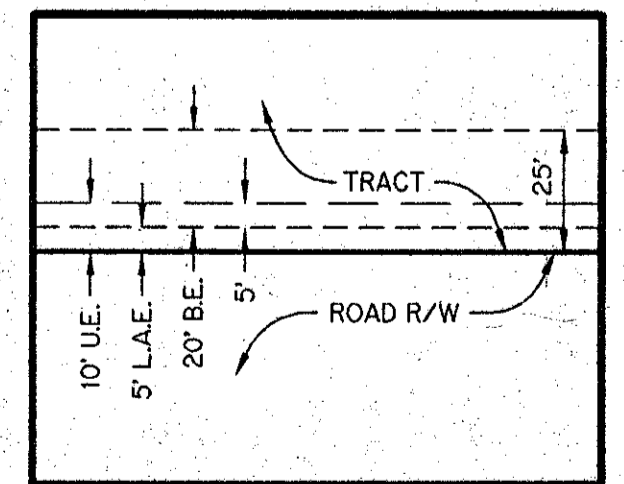
NOTE:
COORDINATES SHOWN ARE GRID COORDINATES
DATUM = NAD 83 (1990 ADJUSTMENT)
ZONE = FLORIDA EAST ZONE
LINEAR UNIT = U.S. SURVEY FEET
COORDINATE SYSTEM 1983 STATE PLANE
TRANSVERSE MERCATOR PROJECTION
ALL DISTANCES ARE GROUND
SCALE FACTOR = 1.00002688
N 90°00'00" E (PLAT BEARING)
N 90°00'00" E (GRID BEARING)
NO BEARING ROTATION (PLAT = GRID)



- LEGEND:**
- - PERMANENT REFERENCE MONUMENT, PSM #4213
 - - PERMANENT CONTROL POINT, PSM #4213
 - Δ - DELTA ANGLE
 - B.E. - BUFFER EASEMENT
 - ⊕ - CENTERLINE
 - D.B. - DEED BOOK
 - D.E. - DRAINAGE EASEMENT
 - L - ARC LENGTH
 - L.A.E. - LIMITED ACCESS EASEMENT
 - L.M.A.E. - LAKE MAINTENANCE ACCESS EASEMENT
 - L.M.E. - LAKE MAINTENANCE EASEMENT
 - L.W.D.D. - LAKE WORTH DRAINAGE DISTRICT
 - N.R. - NOT RADIAL
 - N.T.S. - NOT TO SCALE
 - O.E. - OVERHANG EASEMENT
 - O.R.B. - OFFICIAL RECORD BOOK
 - P.B. - PLAT BOOK
 - P.B.F.C. - PALM BEACH FARMS COMPANY PLAT NO. 3 (P.B. 2, PGS. 45-54)
 - PGS. - PAGES
 - P.S.M. - PROFESSIONAL SURVEYOR AND MAPPER
 - R - RADIUS
 - R/W - RIGHT-OF-WAY
 - S.T. - SURVEY TIE
 - U.E. - UTILITY EASEMENT
 - N 737648.0171 E 905258.2326 - DENOTES STATE PLANE COORDINATES



EASEMENT DETAIL "A"
SCALE: 1" = 40'



EASEMENT DETAIL "B"
SCALE: 1" = 40'

THIS INSTRUMENT PREPARED BY
PERRY C. WHITE, P.S.M. 4213, STATE OF FLORIDA
LAWSON, NOBLE AND WEBB, INC.
ENGINEERS PLANNERS SURVEYORS
WEST PALM BEACH, FLORIDA

0662-001

Pet 95-40
10 school Restrictive covenat
Roads 1320
5/3/3/K
78-15
Roads 1452 AFTER
12/1/97

SUBDIVISION - Valencia Lakes
BOOK 78 PAGE 15
FLOOD MAP #2004
FLOOD ZONE AH
QUAD #50
SE 95-40
PUD NAME Valencia Lakes
ZONING PUD
ZIP CODE 33437