

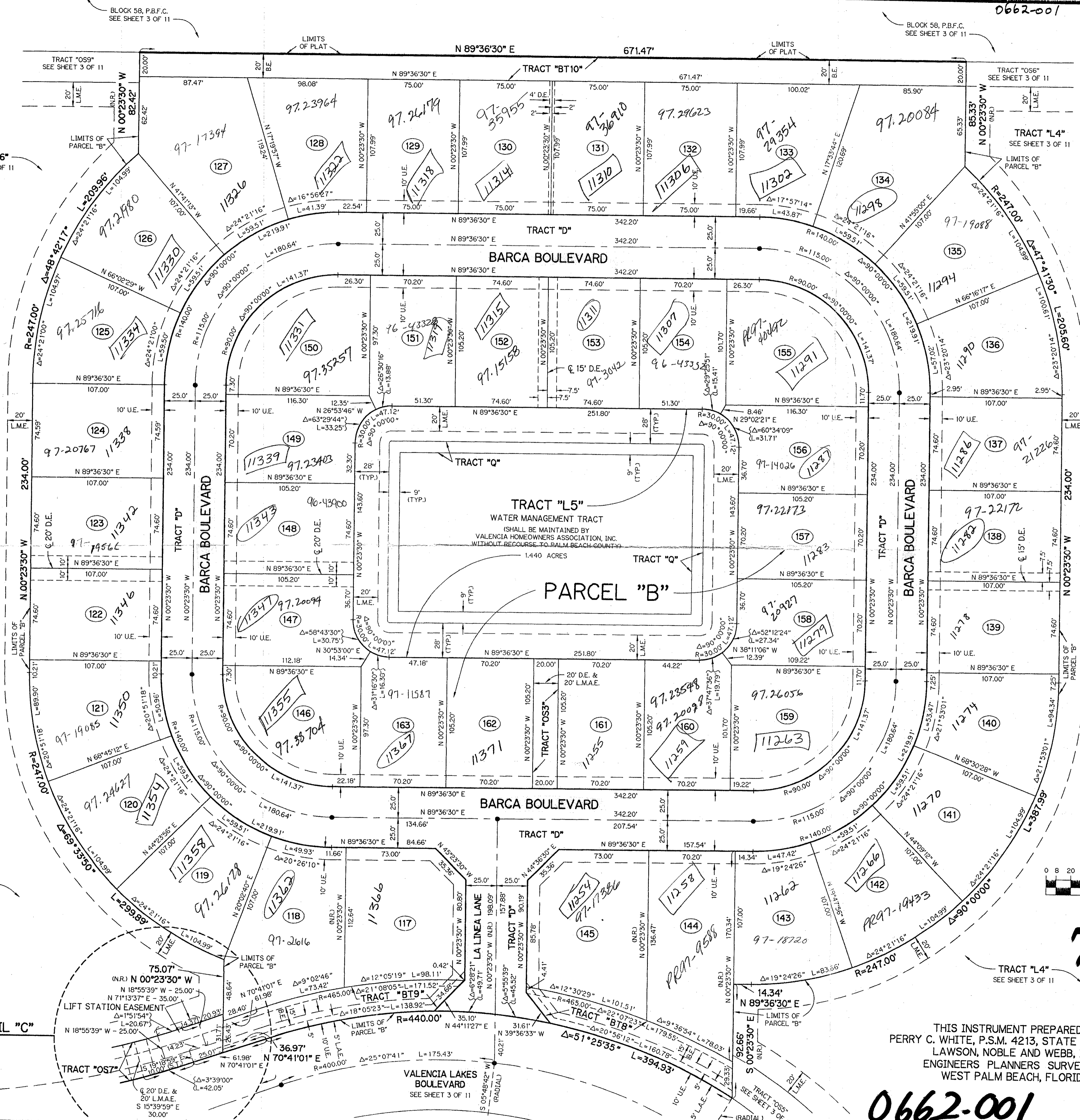
KEY MAP  
N.T.S.

# A PLANNED UNIT DEVELOPMENT VALENCIA LAKES - PLAT ONE

BEING A REPLAT OF ALL OF TRACTS 42, 43, 44, 45, 46, 47, 50, 51, 52, 53, 54, 55, 74, 75, 76, 77, 78, AND 79 AND A PORTION OF TRACTS 41, 48, 49, 56, 73, 80, 81, 82, 83, 84, 85, 86, 87, AND 88 AND ASSOCIATED ABANDONED RIGHT-OF-WAY ALL IN BLOCK 58 ACCORDING TO THE PLAT OF PALM BEACH FARMS COMPANY PLAT NO. 3, AS RECORDED IN PLAT BOOK 2, PAGES 45 THROUGH 54, INCLUSIVE, OF THE PUBLIC RECORDS OF PALM BEACH COUNTY, FLORIDA. LYING IN SECTION 33, TOWNSHIP 45 SOUTH, RANGE 42 EAST.

SHEET 7 OF 11      FEBRUARY, 1996

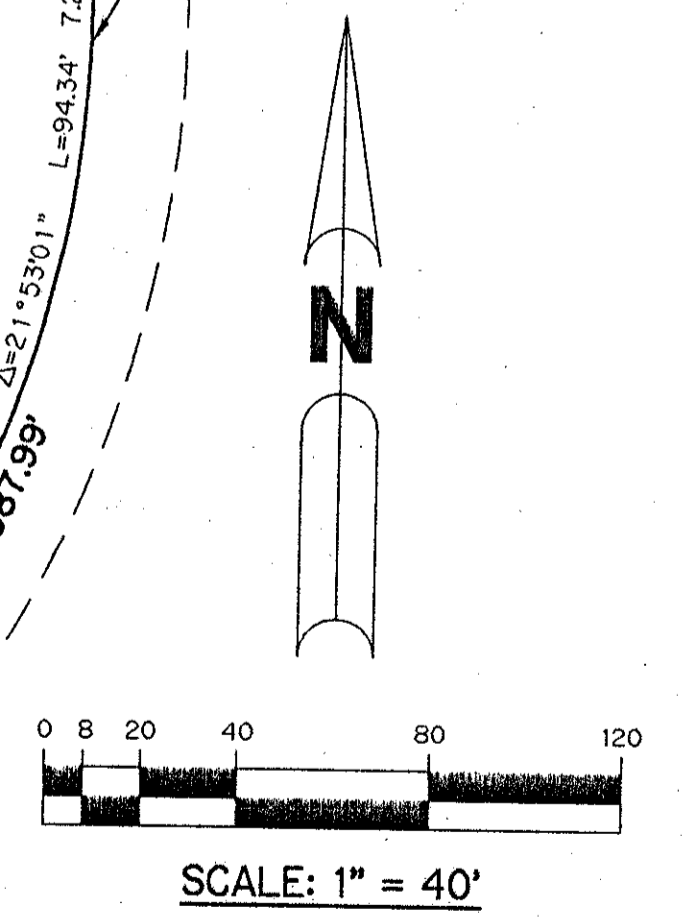
- LEGEND:**
- - PERMANENT REFERENCE MONUMENT, PSM #4213
  - ▲ - PERMANENT CONTROL POINT, PSM #4213
  - Δ - DELTA ANGLE
  - B.E. - BUFFER EASEMENT
  - C - CENTERLINE
  - D.B. - DEED BOOK
  - D.E. - DRAINAGE EASEMENT
  - L - ARC LENGTH
  - L.A.E. - LIMITED ACCESS EASEMENT
  - L.M.A.E. - LAKE MAINTENANCE ACCESS EASEMENT
  - L.M.E. - LAKE MAINTENANCE EASEMENT
  - L.W.D.D. - LAKE WORTH DRAINAGE DISTRICT
  - NR. - NOT RADIAL
  - N.T.S. - NOT TO SCALE
  - O.E. - OVERHANG EASEMENT
  - O.R.B. - OFFICIAL RECORD BOOK
  - P.B. - PLAT BOOK
  - P.B.F.C. - PALM BEACH FARMS COMPANY PLAT NO. 3 (P.B. 2, PGS. 45-54)
  - PGS. - PAGES
  - P.S.M. - PROFESSIONAL SURVEYOR AND MAPPER
  - R - RADIUS
  - R/W - RIGHT-OF-WAY
  - S.T. - SURVEY TIE
  - U.E. - UTILITY EASEMENT
  - N 737648.0171      E 905258.2326 - DENOTES STATE PLANE COORDINATES



DETAIL "C"

Pet 95-40  
No schools.  
Restrictive Covenant  
Roads 1320' - BEFORE 12/1/97  
5/31/98  
Roads 1452' AFTER 12/1/97

TRACT "L4" SEE SHEET 3 OF 11



78119

THIS INSTRUMENT PREPARED BY  
PERRY C. WHITE, P.S.M. 4213, STATE OF FLORIDA  
LAWSON, NOBLE AND WEBB, INC.  
ENGINEERS PLANNERS SURVEYORS  
WEST PALM BEACH, FLORIDA

0662-001

SUBDIVISION Valencia Lakes  
 BOOK 78  
 PAGE 19  
 FLOOD ZONE A+  
 FLOOD MAP 4000A  
 QUAD # 53  
 ZONING PUD  
 SE 95-40  
 PUD NAME Valencia Lakes  
 11/27/94