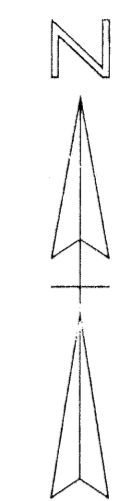
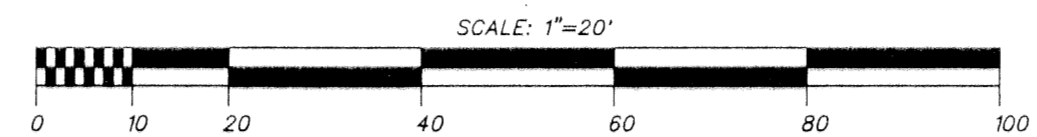


HARBOUR CLUB REPLAT

A REPLAT OF HARBOUR CLUB, PLAT BOOK 50, PAGE 15
SECTION 28, TOWNSHIP 46 SOUTH, RANGE 43 EAST
DELRAY BEACH, PALM BEACH COUNTY, FLORIDA

SHEET 2 OF 2 SHEETS

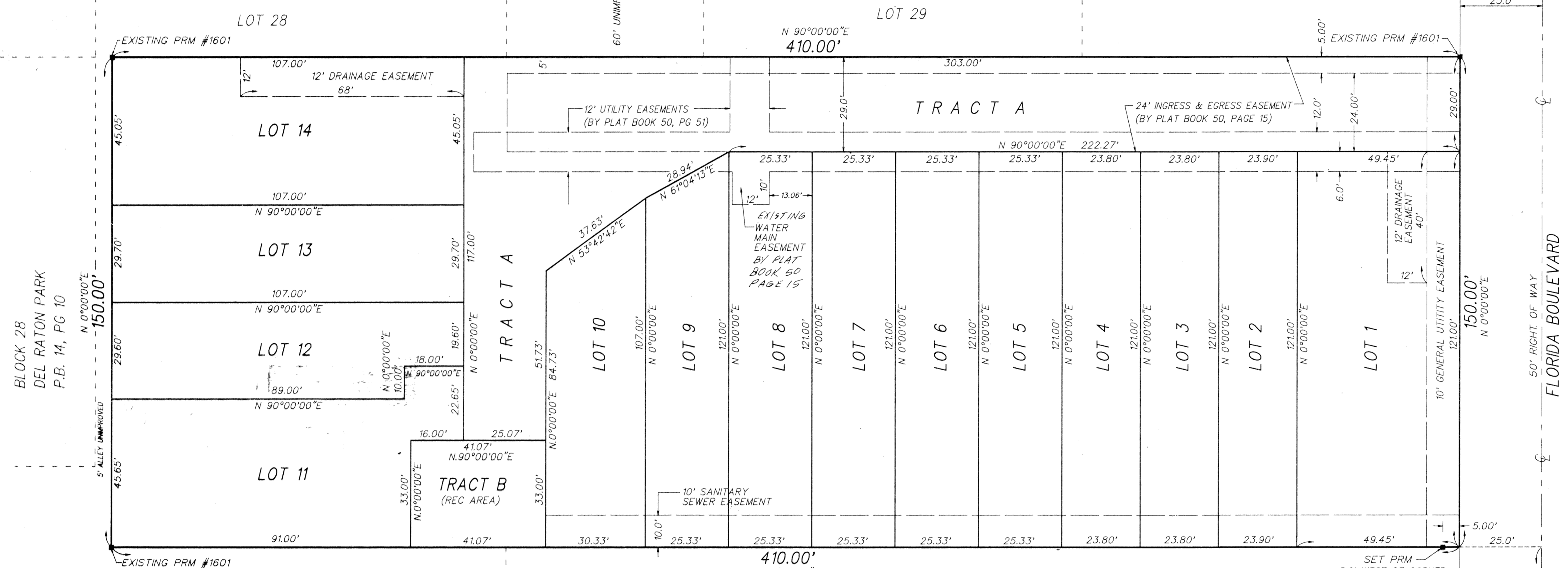


DUMAR PLAZA REPLAT
P.B. 47 PG 48-49

BLOCK 28
DEL RATON PARK
P.B. 14, PG 10

EASTVIEW VILLAGE SQUARE CONDOMINIUM

BLOCK 34, DEL RATON PARK
P.B. 14, PG 10



BLOCK 28
DEL RATON PARK
P.B. 14, PG 10

SOUTH DELRAY SHOPPING CENTER
P.B. 47, PG 45

BLOCK 33
DEL RATON PARK P.B. 14, PG 10

SUBDIVISION # Harbour Club
BOOK 78
PAGE 27
FLOOD ZONE
FLOOD MAP #
QUAD #
ZONING
SE
ZIP CODE
PUD NAME City of Delray

TAZ-528

659.46'
SW CORNER OF
SECTION 28
TOWNSHIP 46 SOUTH
RANGE 43 EAST

O'BRIEN, SUITER & O'BRIEN, INC.
ENGINEERS, SURVEYORS, LAND PLANNERS
2601 NORTH FEDERAL HIGHWAY, DELRAY BEACH, FLORIDA
(407) 276-4501 732-3279 FAX 276-2390